

101 發·現·臺·北
DISCOVER TAIPEI

Dt

MAY / JUN. BIMONTHLY 2014

LOHAS Taipei Cycling Tour

Velo-city Global 2016 Makes Its Asian Debut in Taipei

Taipei Riverside Bikeways –
Experience a Different Side of Taipei

Cycling Culture – Taipei's Unique Custom Cycle Stores

Celebrating the Centennial of Taipei Zoo

Come to Taipei and Experience the Beauty of Indigo Dye



LOHAS Taipei Cycling Tour

As the weather warms up and the sun shines on Taipei City, this is a good time to embark on a mini city tour. The burgeoning popularity of YouBike and the fact that Taipei has been chosen as the host city for Velo-city Global 2016 are both firm affirmations of its efforts to promote cycling and to become a low-carbon city. In this issue we present several articles on the theme "LOHAS Taipei Cycling Tour," introducing Velo-city Global 2016, Taiwan's enviable cycle industry, and the convenient YouBike service, and also take you on a tour of the six riverside bikeways in the city and characterful custom bike stores, so you too can have fun cycling in Taipei.

In the Taipei New Images section we describe some popular new spots in the city, and tell the story of 100-year old Taipei Zoo from past to present; we will also lift the veil over the former Air Force Command Headquarters, have fun growing vegetables at Taipei Expo Park Sky Farm and wander through Taipei Flower Market at its new location.

Early summer is also a good time for travel. In-Depth City Culture Explorations will introduce you to the beauty of Taiwan's indigo dyeing and show you how you too can have a hands-on experience of this craft, and also take readers to explore tea culture in Jiuzhuang Tea Mountain in Nangang, and view the fireflies as numerous as the myriad stars in the night sky.

Taipei's coffee culture is characterized by creativity. What unique dishes do these cafes offer? Taipei's Best Foods & Gifts section invites readers to drink fine coffee and savor delicious foods. In addition, May is the time when spring tea is harvested and we introduce some of the best teashops in Taipei to buy fine tea to take home as gifts.

With the graduation season approaching, 2014 Young Designers' Exhibition will spotlight this year's design graduates, displaying new design energy based on the theme Gear up!

So relax while riding a bicycle, wandering around Taipei City, viewing nature, eating fine food, and savoring culture, experiencing all the good things this city has to offer.





MAY / JUN.
BIMONTHLY 2014

DISCOVER TAIPEI is Available at

臺北市政府觀光傳播局

Department of Information and Tourism,
Taipei City Government
1999 ext. 7564
4F, 1, City Hall Rd., Taipei City

臺灣桃園國際航空站一

Tourist Service Center at Arrival Lobby,
Taiwan Taoyuan International Airport
- Terminal I
(03)398-2194
Dayuan, Taoyuan County

臺灣桃園國際航空站二

Tourist Service Center at Arrival Lobby,
Taiwan Taoyuan International Airport
- Terminal II
(03)398-3341
Dayuan, Taoyuan County

美國在臺協會

American Institute in Taiwan
(02)2162-2000
7, Ln. 134, Sec. 3, Xinyi Rd., Taipei City

遠企購物中心

Taipei Metro the Mall
(02)2378-6666 ext.6580
203, Sec. 2, Dunhua S. Rd., Taipei City

國語日報語文中心

Mandarin Daily News (Language Center)
(02)2341-8821
2, Fuzhou St., Taipei City

臺北市立美術館

Taipei Fine Arts Museum
(02)2595-7656
181, Sec. 3, Zhongshan N. Rd., Taipei City

聖多福天主教堂

St. Christopher Catholic Church
(02)2594-7914
51, Sec. 3, Zhongshan N. Rd., Taipei City

士林區公所

Shilin District Office
(02)2882-6200 ext.8725
8F, 439, Zhongzheng Rd., Taipei City

臺北士林劍潭活動中心

Shilin Chientan Overseas Youth Activity Center
(02)2885-2151
16, Sec. 4, Zhongshan N. Rd., Taipei City

南港軟體工業園區

Nangang Software Park
(02)2655-3093 ext.124
2F, 19-10, Sanchong Rd., Taipei City

臺北美國學校

Taipei American School
(02)2873-9900
800, Sec. 6, Zhongshan N. Rd., Taipei City

國立中正紀念堂

National Chiang Kai-shek Memorial Hall
(02)2343-1100
21, Zhongshan S. Rd., Taipei City

臺北當代藝術館

Museum of Contemporary Art, Taipei
(02)2552-3720
39, Chang'an W. Rd., Taipei City

官邸藝文沙龍

Mayor's Residence Arts Salon
(02)2396-9398
46, Xuzhou Rd., Taipei City

臺北國際藝術村

Taipei Artist Village
(02)3393-7377
7, Beiping E. Rd., Taipei City

臺北二二八紀念館

Taipei 228 Memorial Museum
(02)2389-7228
3, Ketagalan Blvd., Taipei City

交通部觀光局旅遊服務中心

Travel Service Center, Tourism Bureau,
M.O.T.C
(02)2717-3737
240, Dunhua N. Rd., Taipei City

西門紅樓

The Red House
(02)2311-9380
10, Chengdu Rd., Taipei City

光點臺北

SPOT-Taipei Film House
(02)2778-2991
18, Sec. 2, Zhongshan N. Rd., Taipei City

臺北市政府市民服務組

The public service group of Taipei City
Government
(02)2720-8889 / 1999 ext.1000
1, City Hall Rd., Taipei City

北投溫泉博物館

Beitou Hot Springs Museum
(02)2893-9981
2, Zhongshan Rd., Taipei City

士林官邸

Chiang Kai-shek Shilin Residence
(02)2883-6340
60, Fulin Rd., Taipei City

臺北市孔廟

Taipei Confucius Temple
(02)2592-3924
275, Dalong St., Taipei City

松山文創園區

Songshan Cultural and Creative Park
(02)2765-1388
133, Guangfu S. Rd., Taipei City

華山 1914 文化創意產業園區

Huashan 1914 Creative Park
(02)2358-1914
1, Sec.1, Bade Rd., Taipei City

臺北故事館

Taipei Story House
(02)2587-5565
181-1, Sec. 3, Zhongshan N. Rd., Taipei City

國立臺灣博物館

National Taiwan Museum
(02)2382-2566
2, Xiangyang Rd., Taipei City

13 座臺北市旅遊服務中心

13 Visitor Information Centers in Taipei
(see more detail on P. 65)

捷運沿線各站

All Stations of MRT Lines

伊是咖啡

Is Coffee

摩斯漢堡

Mos Burger

亞典圖書公司

Art Land Book Co. Ltd.
(02)2784-5166
122, Sec. 3, Ren'ai Rd., Taipei City

誠品書店各分店

eslite Bookstores

金石堂書店

Kingstone Bookstores



Discover Taipei

Contents



04



18

Taipei City Government

All rights reserved. Reproduction in any form without written permission is prohibited.

Publisher / Tienlong Sun

Editor in Chief / Huiching Huang

Deputy Editor in Chief / Lingling Chung
Iyen Wang

Editors / Julia Szu-tu
Charlie Lee
Richard Saunders

Integrated Marketing / Yenhsin Lee

Translator / Rick Charette
Kevin Lax

Artwork Designer & Production

WestBank Advertising Co., Ltd.

T e l : (02)2723-3516

F a x : (02)2722-4967

Photographer / Vincent Wang
William Lin

Department of Information and Tourism, Taipei City Government

Add: 4F, 1, City Hall Rd., Taipei, Taiwan,
R.O.C.

T e l : 1999 (outside Taipei City, dial
(02)2720-8889 ext. 2029, 7564)

F a x : (02)2720-5909

Email: qa-juliasf@mail.taipei.gov.tw

ISSN: 17281741

GPN: 2008600233

中華郵政台北雜字

第 1376 號執照登記為雜誌交寄

Hope you enjoy reading this issue of DTB.
If you have any suggestions, please do
not hesitate to email or fax us.

Online reading:

<http://english.tpedoit.taipei.gov.tw> :

Information > Reading Taipei >
Discover Taipei

PRINTED WITH SOY INK This magazine was printed with environmentally-friendly soy ink.

04 / Taipei Focus

- 04 Velo-city Global 2016 Makes Its Asian Debut in Taipei
- 08 Taipei Riverside Bikeways – Experience a Different Side of Taipei
- 12 Cycling Culture – Taipei’s Unique Custom Cycle Stores
- 16 Essential Rules for Taipei Cyclists When Taking Public Transport

18 / Taipei New Images

- 18 Celebrating the Centennial of Taipei Zoo
- 22 A Look Behind the Mysterious Veil of a Military Area – The Former Air Force Command Headquarters Opens to Visitors
- 24 A New Home for the Taipei Flower Market in Neihu
- 25 The Joy of Non-Toxic Farming at the Taipei Expo Park Sky Farm

26 / In-Depth City Culture Explorations

- 26 Come to Taipei and Experience the Beauty of Indigo Dye





30 / Taipei's Best Foods & Gifts

- 30 Taipei's Delectable Cafes:
A Concerto of Coffee and Fine Food
- 34 Hard Work, Fine Tea:
Sampling Taipei's Best Brews

38 / Mapping the Taipei Lifestyle

- 38 A Trip to Jiuzhuang Tea Mountain –
Trip Exploring Local Tea Culture
- 42 Watch Fireflies in Taipei
- 44 Celebrate the Dragon Boat Festival With
Creative Zongzi

46 / Taipei Folk, In Their Own Words

- 46 King Liu – Bicycle Missionary
- 48 Jennifer Jao: Taipei Can Provide the Best
Environment for Shooting Foreign Movies
- 50 Timothy Berge – Reporting in English on All
Aspects of Taipei, Big and Small
- 51 How to Talk to Taipei

52 / The Taipei Quest – World Design Capital

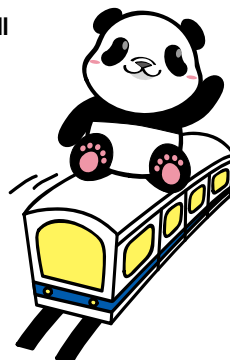
- 52 Gear up! The Young Designers' Exhibition 2014

56 / What's New in Taipei Arts

- 56 More Than Meets the Eye –
The Enigma of M.C. Escher: Prints From the
Israel Museum, Jerusalem
- 58 Taipei Film Festival 2014
- 60 Children's Art Education Center Celebrates
Its Opening by Giving Children a "Gift"

62 / Taipei Events Guide

- 62 January – February Arts Exhibition Calendar
- 65 Airport Transportation, Taipei Visitor
Information Centers, Maps, and Other
Practical Information



Velo-city Global 2016 Makes Its Asian Debut in Taipei



It does not use up our energy resources. It creates no carbon emissions. It uses only the foot-power of its rider. Cycling has captured the hearts of this city's people, and no more is it merely a simple means of getting from A to B. It's a statement of a commitment to green living, and it also happens to be one of the best travel modes for in-depth exploration of Taipei's neighborhoods, nooks, and crannies.

Taipei Chosen as Host for Velo-city Global 2016

Velo-city Global is an annual international cycling convention during which attendees explore planning, design, and policy development and practice. The first gathering was in Germany in 1980, and after 1983 the organizer, the European Cyclists' Federation (ECF), started holding the event in other locations, including London, Barcelona, Paris, Dublin, Munich, Brussels, and Copenhagen. It is now the world's largest international cycling forum, with experts from around the globe invited to participate in what is now the world's largest international bicycle forum.

Since 2010, Velo-city Global has been held in European cities in odd-numbered years and in cities beyond in even-numbered years, making this a truly global event. Over a thousand delegates from industry, government, academia, and research institutions representing more than 50 countries took part in the 2013 gathering, in Vienna.

The event has never before been held in Asia. Taipei was selected over Changwon, Korea, and cities in China and India to host the 2016 edition, clear affirmation of the city's energetic efforts in promoting bicycling and its YouBike public-rental system. The positive benefits for city marketing and the local bicycle industry promise to be significant.

1. Taipei City Mayor Hau Lungbin (front row, second from right) led related personnel in cheering on racers in the Taipei section of the 2014 Tour de Taiwan.
 2. Taipei has played host for many Tour de Taiwan competitions, attracting the best racing teams from around the world.
 3. The Chairman of the European Cyclist federation, Manfred (middle), and the Secretary General, Bernhard (first on right), came to Taipei to check on facilities for the staging of Velo-city Global, and participated in the Taiwan Cycling Festival.
- (Photo courtesy of Department of Chinese Taipei Cycling Association.)



Taiwan Bicycle Brands – A Global Reputation

The strengths that helped Taipei to be chosen as the first Asian city to host Velo-city Global were not developed overnight. The seeds of success have been sown by the inspired work of Taiwan's bicycle industry over the past 40 years. Brands such as Giant Manufacturing Co. Ltd., Cheng Shin Rubber Ind. Co., Ltd., and Merida Industry Co., Ltd. have a global reputation, and have all developed comprehensive supply chains. Though the domestic market is not large, the total output value for complete bikes and parts/accessories surpasses NT\$100 billion annually. The industry is a major international supplier of advanced bicycles, parts, and accessories. Over 90% of all complete



bicycles manufactured are exported, and the country is the world's largest exporter of advanced bicycles. In the American market, three-quarters of all imported bikes are from Taiwan, and the two most recent winners of the Tour de France rode Taiwan OEM bikes.

Taiwan bikes have a worldwide reputation for quality and strength, and cyclists now commonly associate Taiwan with bicycles. Luo Xiang'an (羅祥安), the chairman of the Taiwan Bicycle Exporters' Association, says that Taipei has developed a comprehensive cycling environment, has successfully implemented the YouBike system. Now with its selection as host for Velocity Global 2016, has a powerful triumvirate in place that will do much to increase Taiwan's international visibility and showcase the hard and soft power of the Taiwan bicycle industry for biking enthusiasts around the world.

The Taiwanese Culture of Cycling for Sport & Exercise

As the local bicycle industry has grown, large-scale activities promoting cycling for sport and exercise have been repeatedly staged. Among them is Taipei Cycle (Taipei International Cycle Show; 台北國際自行

車展覽會), first held in 1988, and into the 26th edition this year. Dedicated to the display of bicycles, parts and accessories, this is Asia's largest bicycle exhibition. Another major event is the Tour de Taiwan, established in 1978 and run 22 times to date, which in 2006 was integrated with Taipei Cycle. One of the stages is a circuit race starting from Taipei City Hall, allowing biking devotees taking in Taipei Cycle to come out and enjoy international racing at the highest level.

Taiwan's comprehensive bike-route network, which spans the island, was among the reasons the well-known travel-guide publisher Lonely Planet chose Taiwan as one of the world's best travel destinations in 2012. Building a bike-route network in densely populated Taipei was a big challenge, but the city's determination has brought results, with bike lanes in city areas that give pedestrians, bicycles, and other types of vehicles their own dedicated route, ensuring safety even when traffic is heavy. The city's riverside bike paths have been interlinked with the New Taipei City network, allowing riders to make their way all along the Tamsui River (淡水河), Keelung River (基隆河), Xindian River (新店溪), and Jingmei River (景美溪), enjoying the waterfront scenery.



Bikes – Now Part of the Taipei Cityscape

Traffic in Taipei is frequently heavy, and a YouBike rental allows citizens to shuttle comfortably through the city, painting a relaxed, cheerful counterpoint as they pass along the city streets.

The EasyCard (悠遊卡) gives holders unimpeded access to the whole city, and the success of the YouBike system is an indicator of how popular cycling has become here. Even people who do not normally do any biking and foreign travelers visiting the city often want to try in Taipei. Those without an EasyCard can use one of the automated kiosks at bike stations, paying for their single-usage rental with a smart-chip credit card. There is 24-hour service, and bikes can be rented at one station and dropped off at any other. The resulting convenience has made the YouBike a part of everyday life for local citizens and a great tool for tourists looking to experience the unique “Taipei style.”

Wang Shangwei (王聲威), commissioner of the Department of Transportation (交通局局長) Taipei City Government, says that in major European cities it is common to see people shuttling along the streets on bicycles, soaking in the city's varied charms at a slow, calm pace. In the same vein, Taipei's YouBike service

is a new attraction in Taipei for visitors, who can enjoy watching the city rolling by as though on a movie screen, at a pace perfect for savoring the details of daily life along the city's lanes and alleys.

Velo-city Global 2016 in Taipei City is just around the corner. Come explore this city's superb bicycling environment and our friendly YouBike public bike-rental network. Taiwan is known as the “Kingdom of Bicycles,” so do as the locals do, hop on a two-wheeler, and explore this city's many leisurely delights. 🚲

4. Taipei Mayor Hau Lungbin (seventh from left) led the press conference announcing Taipei's selection as 2016 Velo-city Global host.
5. Taiwan is the world's leading exporter of high-grade bicycles.
6. Taipei's well-planned system of riverside bikeways allows travelers to slow-pedal their way through many different cityscapes.
7. YouBike's simple, easy-to-follow rental process is a snap for foreign travelers to handle.

(Photo courtesy of Department of Transportation, Taipei City Government, and Chinese Taipei Cycling Association.)

Information

YouBike

Tel: (02)8978-5511, or call 1999 Citizen Hotline and transfer to YouBike

Website: www.youbike.com.tw

Taipei Riverside Bikeways – Experience a Different Side of Taipei

As well as shuttling around Taipei's alleys on a YouBike, to appreciate Taipei's riverside scenery on a bicycle, the connecting bikeways around Taipei's riverside parks is the perfect choice. Taipei was listed as 11th in *The New York Times*' "52 Places to Go in 2014," and a bike ride around the city's riverside parks to admire the scenery was among the article's recommended journeys.

The Taipei City Government completed the Taipei Riverside Bikeways (臺北市河濱自行車道) in 2011, and it comprises six bikeways along the Tamsui River, Keelung River, Jingmei River, Shuang River and Xindian River. The route offers a fine view of the riverside – come with us now as we take a look at these six routes, each with their own particular atmosphere.

Keelung Riverside Bikeway – Charming Scenery for a Nighttime Ride

Bikeways follow both sides of the Keelung River. The left bank route can be accessed by the Lin An-Tai Evacuation Gate (林安泰疏散門). The route's first major sight is that landmark of the Dajia Riverside Park (大佳河濱公園), the Fountain of Hope (希望之泉). During its four daily half-hour shows, the fountain produces a 25-story-high circular curtain of water. Elsewhere in the park,

greenery and grass abound everywhere, as well as flowerbeds that stretch all the way to the path beside Dazhi Bridge (大直橋).

When darkness falls, the river's surface is lit up with reflections from the Miramar Ferris Wheel (美麗華摩天輪), the Grand Hotel (圓山大飯店) and the multicolored Rainbow Bridge (彩虹橋). These dazzling, enchanting scenes along the Keelung riverside can be admired on a nighttime ride.

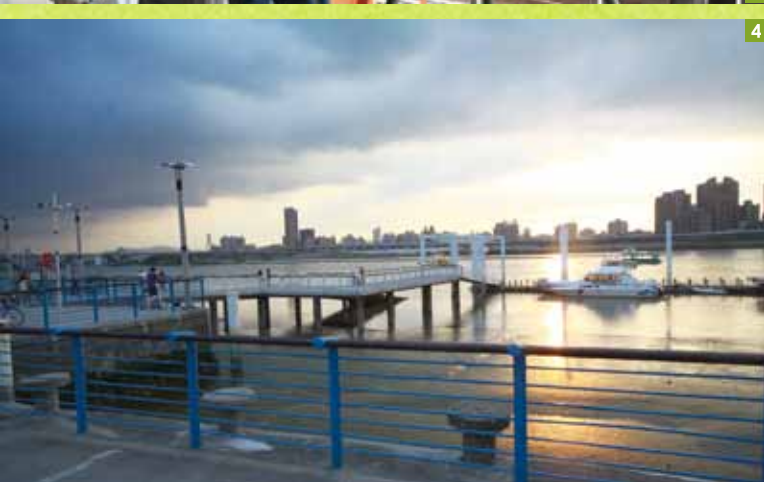


1-2. Dajia Riverside Park's colorful flower sea and the Fountain of Hope present pleasing scenes on the bank of the Keelung River; flowerbeds also stretch all the way to Dazhi Bridge.

Guandu, Golden River Bank, and Bali Left Bank Bikeways – Experience the Richness of Nature

Starting beside Guandu Temple (關渡宮), the Guandu Bikeway (關渡自行車道) passes the Guandu Nature Park (關渡自然公園), one of the few wetland parks in Taipei and a perfect spot for birdwatching. The path continues by Guizikeng River (貴子坑溪), connecting with several hiking trails. From the bikeway, you can admire such natural scenes as Mt. Guanyin (觀音山), a large expanse of mangroves and flocks of flying water birds.

As the Guandu Bikeway continues north, it links up with the Golden River and Bali Left Bank Bikeways. These two paths are linked by the red arches of the Guandu Bridge (關渡大橋). You can also carry your bike on board ferryboats heading to Guandu, Bali Longxing Wharf (八里龍形碼頭), Zhuwei (竹圍) or Tamsui at Dadaocheng Wharf (大稻埕碼頭). While on board, you can admire a fine view of the Blue Highway, or the beautiful scenery at the mouth of the Tamsui River at sunset, as the clouds above assume a range of beautiful hues.



Jingmei River Family Bikeway – The Perfect Place for Young and Old to Relax Together

There are bikeways on either side of the Jingmei River, linked by the Daonan Bridge (道南橋) and Yishou Bridge (一壽橋). The path on the left-hand side of the river is only 3.8 kilometers long, so it is perfect for family bike rides or for novices.

Setting off from the Muzha Bike Rental Center (木柵租借站), you will enter the Daonan Riverside Park (道南河濱公園), passing by green meadows, lovely scenery and the beautifully clear stream. Delightfully modeled stone statues and stools decorate the lawns, a perfect natural, harmonious accompaniment to the sound of laughing children on a happy outing.

As you approach Jingmei Bridge (景美橋), you can appreciate the beautiful structure, rebuilt in 2010. Its wonderful arched design stretches across Jingmei River without any supports, and its white body is set off delightfully by flowers and green lawns during the day, while at night the bridge is lit up by ever-changing LED light displays, presenting cyclists with a bold, enthusiastic welcome.



3. Guandu Nature Park has a rich natural ecological landscape and is the perfect spot for bird watching.
4. The sunset over Dadaocheng Wharf has the beauty of a painting and often attracts cyclists who flock here to watch the sunset.
5. The bikeway on left bank of the Jingmei River is an easy ride, perfect for families or novices.



6



7



8



9

Shezidao and ErChong Spillway Bikeways – Pure and Simple Rural Scenes

Shezidao (社子島) is located at the confluence of the Keelung and Tamsui rivers. Most of the island remains undeveloped, and is imbued with a simple, rural atmosphere, quite different from that of the city. The greenery of paddy fields and vegetable gardens mingle to create charming scenes of simple, unadorned rural beauty.

A model of a bicycle stands atop Shezidao dike. Sitting here, you can see Mt. Datun (大屯山) and Mt. Guanyin on the horizon, and the rainbow-colored chimney of the Beitou Refuse Incineration Plant (北投垃圾焚化廠), which features the world's first revolving restaurant on a chimney. If you cycle to the end of Shezidao sandbank, you can absorb an extensive view of the confluence of the Keelung and Tamsui rivers, and Chongyang Bridge (重陽大橋) stretching across the Tamsui River, complete with its two white, H-shaped towers. Drinking in the scene reflected in the waters of the river, you'll hardly want to leave.

Shuangxi Riverside Bikeway – An Invigorating Green Tunnel

The Shuangxi Riverside Bikeway is the shortest of Taipei's six riverside bikeways, and the closest to a residential area; the routes on each side of the river are around 2.8 kilometers long. Anglers can be seen fishing along the length of the path, presenting a leisurely scene.

Among the beautiful scenery along the Shuang River are the many tall trees along the length of the path, creating a natural green tunnel to welcome passing cyclists, who can enjoy the cool, refreshing shade. From the left-hand Shuangxi bikeway, you can also reach the path along the right-hand side of Bailing Bridge (百齡橋). Teams can often be seen playing rugby or football in the Bailing Right Bank Riverside Park (百齡右岸河濱公園), and on the way you can pay a visit to Taipei's last sampan dock, the Sanjiaodu Ferry Port (三腳渡擺渡口).

6. Shezidao is located at the confluence of the Keelung and Tamsui rivers, and cycling here offers expansive views.

7. Riding a bicycle atop Shezidao dike, you can see Mt. Datun and Mt. Guanyin and the rainbow-colored chimney of the Beitou Refuse Incineration Plant in the distance.

Xindian River, Dahan River, and Tamsui River Bikeways – The City's Most Environmentally-Friendly Green Areas

The landscape along the Xindian and Dahan rivers is one of the city's green areas. Along the stretch from Zhongxing Bridge (中興橋) to Huajiang Bridge (華江橋), accumulated silt has formed broad sandbanks, marshes and wetland areas, which attract visitors from afar in the form of wildfowl and protected migrant birds.

Setting out from the Fuhe Bridge (福和橋) access road, riding along the right-hand side of Xindian River, the landscape gradually changes from the countless structures of the metropolis to expansive views of green parkland. Passing through Guting Riverside Park

(古亭河濱公園), you can stop at the white terraces of the Taipei City Hakka Cultural Park (臺北市客家文化主題公園) to watch flocks of birds flitting among the green trees and Hakka-style buildings. As you enjoy the cool breeze in your face, you will feel completely immersed in nature.

For visitors who do not have their own bicycle with them, there are bike rental centers dotted along the length of the riverside bikeways. You can rent a bike at one stand and return it at another. Foreign visitors need only to bring along their passport and the telephone number and address of their accommodation to rent a bicycle just as easily as the locals. Taipei is blessed with both bustling metropolitan areas and relaxing natural spaces – and you only need a bicycle to experience it all! 🚲

8. Taipei's last sampan dock, the Sanjiaodu Ferry Port has a pronounced historical air.
9. The white terraces of Taipei City Hakka Cultural Park are a highly visible landmark on the right bank of the Xindian River.

Information

The Taipei Riverside Bikeways 臺北河濱自行車道

Helpline: 0982-780-780

Website: www.riversidepark.taipei.gov.tw/BikePath

Guandu Bike Rental Center 關渡租借站

Venue: On Zhixing Rd. (知行路), next to Guandu Temple (關渡宮) and Guandu Wharf (關渡碼頭)

Tel: (02)2858-1016

Dadaocheng Bike Rental Center 大稻埕租借站

Venue: End of Minsheng W. Rd. (民生西路), next to Dadaocheng Wharf (大稻埕碼頭); enter through Dadaocheng Evacuation Gate (大稻埕疏散門)

Tel: (02)2557-1639

Dajia Bike Rental Center 大佳租借站

Venue: Turn into Jingbinjiang St. (濱江街), next to Keelung River Evacuation Gate No. 8 (基隆河8號疏散門)

Tel: (02)2517-5369

Meiti Bike Rental Center 美堤租借站

Venue: Enter through Meiti Evacuation Gate (美堤疏散門), at the end of Jingye 3rd Rd. (敬業三路) and turn left; next to the 4X Racing Ground (土坡曲道賽場)

Tel: (02)8501-1962

Jingfu Bike Rental Center 景福租借站

Venue: The Gongguan Riverside Plaza (公館水岸廣場) at the Taipei Water Park (自來水園區), end of Siyuan St. (思源街), next to Yongfu Bridge (永福橋)

Tel: (02)2364-0156

Muzha Bike Rental Center 木柵租借站

Venue: The plaza at Daonan Riverside Park (道南河濱公園), in front of Taipei Zoo (臺北市立動物園), Sec. 2, Xinkong Rd. (新光路2段)

Tel: (02) 2938-2181

Guanshan Bike Rental Center 觀山租借站

Venue: Turn into the Tayou Evacuation Gate (塔悠疏散門) on Tayou Rd. (塔悠路); head towards Dazhi Bridge (大直橋); beneath the highway bridge

Tel: (02)2761-5927

Huazhong Bike Rental Center 華中租借站

Venue: End of Wanda Rd. (萬大路); enter through Huazhong Evacuation Gate No. 1 (華中一疏散門); beneath Huazhong Bridge (華中橋)

Tel: (02)2339-0908

Shuangxi Bike Rental Center 雙溪租借站

(open on weekends and holidays)

Venue: From Zhoumei St. (洲美街), turn into Heshuang Riverside Park No. 21 (河雙21號河濱公園); head towards Zhoumei Bridge (洲美橋); beside the bikeway

Tel: (02)2834-0273

Rainbow Bike Rental Center 彩虹租借站

(open on weekdays and holidays)

Venue: Beneath the right-hand side of MacArthur No. 1 Bridge (麥帥一橋), which can be reached by walking from Rainbow Bridge (彩虹橋) or Xingshan Rd. Bridge (行善路橋)

Tel: (02)2793-5910

Cycling Culture – Taipei's Unique Custom Cycle Stores



Cycling can be described as Taipei's favorite sport. Not only is it a mode of transport and a form of exercise, but also a new and fashionable way of life in the city. YouBike's user-friendly rental process has become an experience not to be missed for many visitors to Taipei, but if you'd like a bike of your own to wander everywhere on, this issue let us introduce four characterful bike stores where bike-lovers can have a unique, custom-built bicycle made.



Sense30 – Practical Cycling

Sense30, hidden in an alley on Guangfu South Road (光復南路), were founded by three 30-something designers. They believe that many of the bikes on the market blindly emphasize function, but ignore the more fundamental aspects of beauty and the rider-bike relationship, and lack so-called "the sense." It happened that the bike brand they loved at the time was Raleigh, or *Shenshi* (紳士) in Chinese, and so their store was named for the similar-sounding words "30," "sense" and "Shenshi" to reflect their aim of producing a unique style of bike, like Raleigh, for more discerning bike-lovers.

Sense30's main products are traditional steel-tube bikes. Unlike many bikes on the market, which use glue to fix the frame parts together, steel-tube bikes are made by welding copper into tiny holes in the frame. They must be inspected



carefully and fine ground in order to ensure that the molten copper has entered every welding spot tightly to guarantee the strength and durability of the frame.

In addition to being experts on bikes and accessories, Sense30 also co-operates with Taiwanese designers, providing popular clothing and accessories for cyclists. One of the bosses, Xiao Yeh (小葉), who studied art, explains, "Sense30 promotes the concept of the cycling lifestyle, and we hope that a bicycle will not play merely the roles of transport or sport, but instead people will think how they can incorporate it into their life; like a pair of shoes or an item of clothing. A good bike looks great and represents your own personal style; hopefully you will want to be with it all the time."

Classic London Style – Lane & Trip

Pictures on the wall of the store detail the history of the development of the bicycle, there is also a wooden display platform and a red British telephone box that exudes a uniquely London atmosphere. Situated on the breezy and leafy Fujin Street (富錦街), even passers-by stop in their tracks at the doorway of Lane & Trip (輪粹生活).

Owner Yen (顏), who likes to chat and interact with customers, originally worked in electronics industry. He believes that the modern metropolis of Taipei is extremely suited to the cycling lifestyle. As a result, Lane & Trip's position was clear at the very beginning; it does not embrace the markets for road bikes, mountain bikes

or competitive sports, but rather emphasizes the sale of urban leisure bikes, for which purpose it has specially imported custom-built leisure bikes from Brompton in the United Kingdom and Pedersen in Germany. All related knowledge and technology were obtained by the owner himself, which when he went to the experts in the UK for assistance.

Lane & Trip has made a Brompton customized website in order to meet customers' customization needs, the main page displaying a stripped Brompton bike, surrounded by all kinds of customization options, such as color, saddle, tires, handlebars, lights, etc. Customers can select options at leisure, and the appearance of the frame will change, at the same time displaying the weight and price of the combination. In addition, the website also show notifications randomly to ensure the selected combination is in accordance with the arrangement setting. After the order is placed, a staff member will actively contact the customer to obtain confirmation. Of course, you are also welcome to go straight to the shop and discuss your requirements, and a test ride service is also provided.

1. The Sense30 shop front has the style of an English style and it also sells a gentlemanly lifestyle concept.
2. The work table is located inside the store, letting the customer see the entire customization process.
3. As well as cycles, the store also has fashionable clothes and accessories suitable for cyclists.
4. Lane & Trip has a spacious interior and a sofa on which customers can talk in a relaxed fashion with the boss.
5. The wall design and arrangement of the cycles has a distinctive London feel.



Performance Meets Fashion – CSK Bikes

After retiring, Taiwan's foremost cyclist of the 1980s, Zhang Shengkai (張勝凱), who won three gold medals, six silver medals, and six bronze medals at the Tour de Taiwan (國際自由車環台公路大賽), created his own bike brand, CSK, providing high-grade, fashionable sprinting bikes. His target market tends to be professional athletes, and not only is he respected by cyclists from all nations, but has also been selected to provide bikes designed for the US President's bodyguards to use on duty at the White House – even the news channel CNN made a trip to Taiwan for an interview.

As a former cyclist, Zhang can consider the needs of a cyclist from a professional athlete's perspective, and provide bikes made to measure. As well as high quality and excellent performance, he also makes bikes that are masterpieces of fashion and art; the Dahu Strawberry bike, which was painted to resemble the fruit, was featured in *Marie Claire Taiwan* (美麗佳人) magazine, and was 8th in its list of top people, events and things in Taiwan; another bike, which had 150 50-point diamonds (weigh 0.5 carat), mounted on the front, was bought by the royal family of Brunei.

Zhang has always cherished a dream that the Taiwanese will travel all over the world riding his bikes. He also diligently raises his son and daughter to become national athletes, and hopes that one day they will achieve international renown riding Taiwanese bicycle brands.

- 6. Zhang is diligently raising his son and daughter to become national athletes, and hopes that one day they will achieve international renown riding "Made in Taiwan" cycles.
- 7. As a former national cycle cycling team star, the brand established by Zhang Shengkai is able to consider the needs of competitive cyclists from the perspective of an elite cyclist.



Experience the Thrill of Fixed-Gear Bikes – Black Messenger

Black Messenger (布雷克單車快遞) is situated in an alley on Daan Road (大安路) in the city's east district. Its young, handsome boss, Chou Mingfu (周洛甫), a part-time model, originally intended to work as a bicycle courier at a branch of Prodrapid. Later, after that branch closed, he had the idea of opening a business, so he opened the Black Messenger courier store; he turned the store into a dedicated outlet for custom-assembled bikes due to a poor response to the bicycle courier service and his passion for fixed-gear bicycles.

As the name suggests, fixed-gear bikes have a single gear that can't be



changed, with the speed of the bike controlled by the rider alone; furthermore, as there are no brakes, riding such a bike is harder than a normal road bike, more skills and concentration are required – it is only when the rider becomes one with the bike that riding a fixed gear bike can be mastered. Chou proudly explains, “This store uses only components made in Taiwan and everything from frame to screws can be selected by customers.”

Would you like to build a unique bike of your very own? There has no time like the present to make your dream of roaming in Taipei on a bike you love come true. 🚲

8. A one-of-a kind diamond cycle, with 150 50-point diamonds (weigh 0.50 carat) mounted on the front, was bought by the royal family of Brunei.
9. Dahu Strawberry bike, which was painted to resemble the fruit, was featured in *Marie Claire Taiwan* magazine, and was 8th in its list of top people, events and things in Taiwan.
10. Black Messenger uses only components made in Taiwan for its custom-assembled fixed gear bikes.
11. Driven by a passion for fixed-gear bicycles, Chou Mingfu has turned the store into a dedicated outlet for custom-assembled fixed gear bikes.

Information

Sense30

Add: 40, Ln. 417, Guangfu S. Rd.
(光復南路417巷40號)

Tel: (02)8789-4835

Lane & Trip 輪粹生活

Add: 425, Fujin St. (富錦街425號)

Tel: (02)2753-5177

CSK Bikes 張勝凱自由車專賣店

Add: 60-2, Sec. 3, Chongqing S. Rd.
(重慶南路3段60-2號)

Tel: (02)2305-1089

Black Messenger 布雷克單車快遞

Add: 8, Ln. 31, Sec. 1, Daan Rd.
(大安路1段31巷8號)

Tel: (02)2741-4247

Essential Rules for Taipei Cyclists When Taking Public Transport

When riding a bicycle in Taipei, if you wish to travel by public transport during your journey please follow these rules, which are designed to make your trip easier.

When traveling by MRT, please note:

Bike size restrictions:

1. Travelers shall only bring bicycles and electric bicycles of maximum dimensions 180cm long, 120cm tall, and 70cm wide aboard the MRT. If a bicycle is dirty and this causes others inconvenience or safety issues, the Taipei Rapid Transit Corporation may refuse carriage.
2. No gas-powered bicycles, electric mopeds, tandem bicycles or any other bicycles which do not fall into the category of normal bicycles shall be brought onto the MRT System.
3. Travelers under the age of 14 bringing a bicycle aboard the MRT System shall be accompanied by an adult.

Opening hours:

Travelers with bicycles may use specified stations from 6 am until the last MRT service of the day on Saturdays, Sundays, and national holidays.

MRT lines on which bicycles may be taken:

With the exception of the Wenhua Line (文湖線) on which bicycles are not allowed, travelers may take bicycles on any MRT line.

Stations which are open to bicycles:

1. Bicycles may not be brought onto the following: Tamsui Station (淡水站), Shipai Station (石牌站), Jiantan Station (劍潭站), Taipei Main Station (台北車站), NTU Hospital Station (台大醫院站), Daan Station (大安站), Zhongziao Fuxing Station (忠孝復興站), Taipei Nangang Exhibition Center Station (南港展覽館站), and all stations on Wenhua Line.

2. Stations at which passengers with bicycles may transfer: Travelers shall only change to another MRT line at transfer stations open to bicycles, and may not transfer or disembark at Taipei Main Station, Zhongxiao Fuxing Station, Daan Station, or Taipei Nangang Exhibition Center.
3. Travelers with bicycles who do not embark, disembark, or transfer at the aforementioned stations in accordance with these regulations shall be penalized in accordance with Subparagraph 4 of Paragraph 1 of Article 50 of the Mass Rapid Transit Act.

Movement on and off the Train:

The use of escalators is strictly forbidden; stairs, elevators (which can hold 2 bicycles at a time), or unobstructed ramps inside or outside the station may all be used. Bicycles shall be pushed and not ridden. When moving bicycles within the MRT System, using elevators or entering and exiting the train, you shall give way to the physically or mentally disadvantaged and other travelers.

Fees:

Passengers with a bicycle are charged a flat fee of NT\$80 for a single journey ticket between any two stations on the MRT network. Please purchase tickets from station staff at MRT station information counters. Each ticket shall only be used by one person with one bicycle. Tickets shall be returned when leaving the station, and both bicycle and passenger shall leave the station together.

Entry and exit gates:

Please request assistance from station service staff when using public gates to enter or exit the station.

Points to note when entering or exiting the train with bicycles:

1. Only the two end MRT carriages are open to the ingress, egress or parking of bicycles. Only 2 bicycles shall be parked within each carriage doorway area, and the space for wheelchairs shall not be occupied. Each train has a capacity for 16 bicycles; if this is inadequate, please wait for the next train.
2. Bicycles shall be parked on either side of the column in the center of the carriage opposite each entrance door, and face the train's direction of travel.
3. Travelers bringing a bicycle on a train shall remain with their bicycle at all times, and may not sit on a seat or leave their bicycle.
4. When other travelers are entering or exiting the train, travelers with bicycles shall give way, and prevent their bicycle from dirtying the clothes of others.
5. In the event of an emergency, to avoid obstructing emergency exit routes please leave bicycles on the train, moving them to the side of the carriage opposite the opening doors, in accordance with announcements.
6. If travelers with bicycles cause loss to the MRT or any third party, they shall assume any associated legal liability.



When traveling by long distance bus, please note:

1. There is no need to purchase another ticket when bringing a folding bicycle aboard, but a bag or paper box shall be used to store it in the luggage space.
2. If travelers do not obey the above regulations, bicycle transport service shall be suspended.

When traveling by train, please note:

Folding bicycles:

1. Folding bicycles shall be placed within a bicycle bag; otherwise a fee will be charged.
2. Folding bicycles may be brought aboard a Local Train (區間車), a Fast Local Train (區間快), and an Ordinary Train (普快車). Please keep your bicycle with you at all times.
3. Bicycles shall only be placed in the area reserved for bicycles in the 12th carriage of PP (Push-pull) Tze-Chiang Limited Express (自強號) trains, and may not be carried aboard any other carriage. No bicycle shall be brought onto a train if the bicycle storage area of that train is full.
4. Bicycles shall be brought aboard and placed in suitable spaces where they do not obstruct movement on DMU (Diesel Multiple Unit) Tze-Chiang Limited Express, Chu-Kuang Express (莒光號) and Fu-Hsing Semi Express (復興號) trains. These services will be closed to bicycles for the duration of holiday peak periods.
5. Folding bicycles shall be placed within bags before entering the ticket inspection area, from which they shall be removed only after leaving the ticket inspection area.
6. If a bicycle is taken onto a train that is not designated for the carriage of bicycles, or the above regulations are not followed, an excess charge shall be levied to compensate for the excess space occupied by the bike.

Non-folding bicycles:

1. There is a limit to the number of bicycles allowed on each train. Travelers are advised to arrive at the desired station of departure and purchase tickets early to avoid disappointment.
2. Travelers shall only embark or disembark with bicycles at certain stations and bicycles shall only be loaded onto trains or unloaded from trains in certain areas. For details, please inquire at (02)2311-1024 or (02)2371-3558.
3. Travelers are responsible for looking after their own bicycles.



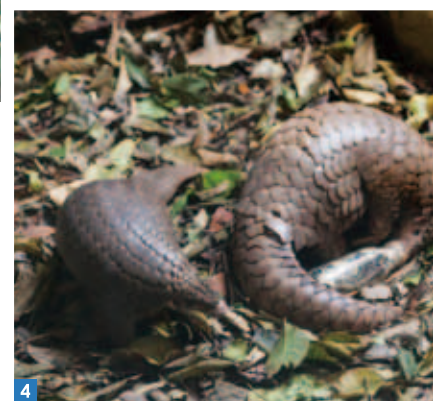
1



2



3



4

Taipei Zoo (臺北市立動物園) is 100 years old this year, and as part of its centennial celebrations a special logo, featuring a pangolin, has been created to tell the world about the plight of this animal, whose numbers are being decimated around the world due to hunting and habitat destruction. The animal has generally not adapted well to captive life in zoos, yet it has flourished at Taipei Zoo, breeding successfully, and the species has even been given through collaborative conservation breeding program to Tokyo's Ueno Zoo and Germany's Zoo Leipzig. If only this conservation effort can continue and spread

Yesterday – When Lions Jumped Through Hoops: Animal Shows

The zoo dates back to 1914, when the Japanese controlled Taiwan. Former director of the zoo Chen Baozhong (陳寶忠) says that the Japanese government bought a private zoo that was located on Yuanshan, in the area where today the Grand Hotel is located nearby. On the day of its formal opening, there were 148 animals

from 70 species. On Sundays up to 800 people would visit, out of a population of just 170,000 people in Taipei, and the zoo was a lively, busy place. During World War II, as allied air raids became more frequent, many animals were put down to prevent accidental escape and potential injury to the local human population. After the war, the zoo was a dying shadow of its former self.

With few resources, the number of individual animals and species withered. The zoo launched numerous animal shows to attract more visitors: monkeys dressed as humans and eating a Western meal, chimpanzees riding bicycles, lions jumping through flaming hoops, and parrots pulling or sitting in carts. This was an era of poverty, scarcity, and limited leisure and entertainment distractions, and the shows brought local citizens much surprise and happiness. In 1961, Taipei Zoo administration began cooperating with zoos in Japan and further afield, engaging in exchanges, gift presentations, and purchases, and the zoo began to recover its dynamism.

Space was limited in Yuanshan, making expansion problematic, and so the decision was made to move to a new spot in Muzha (木柵). The move, which happened in 1986, was a big event, and hundreds of thousands lined the streets to cheer the movers on their way. The 20 special vehicles carrying the animals were met with flags and city banners all along the route, and the grand spectacle was even covered in the international media. The move took place during the summer holidays, and to prevent the animals from suffering heat stroke or other problems large quantities of ice were piled on top of the vehicles.

Today – A Rainforest Debuts, Bringing Visitors a Glimpse of the Amazon

With the move to Muzha, the zoo was recreated as a leisure facility of natural landscaping and distinctive ecology. The animals were provided with living environments as close as possible to their natural habitat, which helped visitors better understand them as well. Today the zoo is home to over 3,000 animals, from 457 species. Walk through the entrance gate, open your map, begin strolling, and you'll be guided to a sequence of 8 main outdoor exhibition areas: Children's Zoo, Formosan Animal Area, Asian Tropical Rainforest Area, Desert Animal Area, Australian Animal Area, African Animal Area, Bird World, and Temperate Zone Animal Area. There are also six indoor display halls:



the Insectarium, Koala House, Giant Panda House, Amphibian and Reptile House, Penguin House, and Tropical Rainforest House. The Tropical Rainforest House is expected to open two years later.

In keeping with increasingly sophisticated global practices, the zoo's policy in regard to species collection and animal display has become ever more advanced. The Nocturnal Animal House has now become part of the zoo's history, replaced with the Tropical Rainforest House. For those who cannot wait to look through this window into the ecology of the Amazon rainforest, Director Chin Shihchien (金仕謙) says, "After the indoor rainforest pavilion is opened as expected in 2016, the full range of ecological habitats near the equator will be on display. A lush world of plant life that grows in hot and humid tropical rainforest environments will be on show in the facility, which will be 24 meters high. Using the Taiwan pangolin as our model, we're further strengthening the zoo's biological-diversity conservation and our educational functions."

1. The Taipei Zoo is a must-visit attraction for many visitors from China and elsewhere overseas.
2. During a post-war period of lean resources, animal shows were introduced; visitors marveled at lions jumping through flaming hoops.
3. The zoo was moved in 1986, using 20 special animal transports, and hundreds of thousands lined the streets to cheer the grand procession.
4. The zoo has chosen the endangered pangolin as logo for its centennial celebrations, showcasing its successful captive breeding program and symbolizing its continued commitment to animal conservation efforts.
5. Ma Zhenfang, Taipei municipal government secretary-general, waved goodbye to the crowd as the doors were shut at the old site for the last time.

(All photos above courtesy of Taipei Zoo)



6



7

6. In the zoo's early years the orangutan Ichirokun was a popular star, helping to increase the zoo's popularity.
7. The cow elephant Malan and bull Asian elephant Lin Wang were zoo stars for half a century.

(All photos above courtesy of Taipei Zoo)

8. The incredible agility of the Formosan macaques stimulates non-stop photo-shooting with visitors.

A Cavalcade of Animals

Over the last 100 years the zoo has given unexpected birth to many "animal stars" which have been a topic of everyday conversation, and have become a part of the public's collective memory. In the zoo's early years the elephant Miss Ma (瑪小姐) and the orangutan Ichirokun (一郎君) were the most popular residents. In the postwar period the cow elephant Malan (馬蘭) was brought in, and "married" to the bull Asian elephant Lin Wang (林旺). Lin Wang became a treasure for both park and city, his stardom lasting half a century.

Following Lin Wang, the gorilla Bao Bao (寶寶) stepped into the spotlight. Then it was cute koalas, after that king penguins. Then Tuan Tuan (團團) and Yuan Yuan (圓圓) the giant pandas arrived on the Taiwan scene, setting off stargazing fever of an intensity long unseen. Excitement soared even higher with the arrival of their beloved baby, Yuan Zai (圓仔).

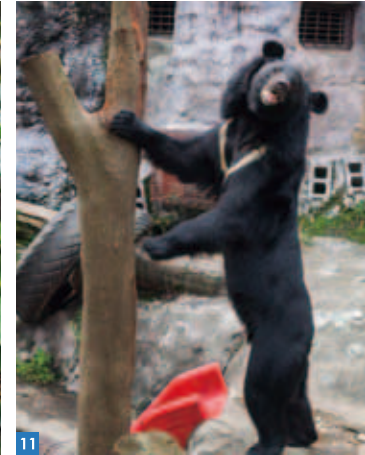
Just how cute is Yuan Zai? According to the Ministry of Foreign Affairs, there have been around 800 overseas media reports on Yuan Zai by March, 2014. In the past, the average number of visitors to the zoo was about 3 million annually; with Yuan Zai now on the scene, this year from January through March the number surpassed 1.1 million, an increase of 20~30% compared to the same period in previous years. The Yuan Zai whirlwind seems unstoppable.

Tomorrow – The Campaign for Conservation

In recent years, the zoo has been actively engaged in the rescue of protected, rare, and endangered species. Pointing to the zoo's Formosan sika deer, Chin says, "They had already been extinct in the



8



wild once. It is the zoo's responsibility to try to conserve our native heritage by raising these in captivity." Formosan sika deer and serow populations have plummeted, and the species are still facing crisis in the wild. The Formosan serow is endemic to the island, and after years of effort at the zoo, the species has made a recovery. It's extremely territorial, and one of its most intriguing attributes is that it does not mark out its territory with excreta as do various other animals; instead, it mark objects with its infra-orbital glands.

Have you seen director Ang Lee's award-winning film *Life of Pi*? In it you saw the Formosan black bear Black Sugar (黑糖). Under its caretakers' careful and caring training, Black Sugar has become a pro at catching food with its hands, and when it stands up its unique markings, a large white-fur V across its chest and white scarf-like ear markings, are clearly visible. Because of all its training, Black Sugar suffered no stage fright when filmed for *Life of Pi*. According to Chin, "Because of over-exploitation of our forests, Taiwan's black bear population is estimated to be just 200 or so. Prospects for

the restoration of its environment are even bleaker than for the giant panda's habitat. Our goal is thus to work with other institutions in black bear captive breeding and reproduction."

For the foreign visitor, a visit to the Taipei Zoo is almost compulsory. Located right in the city, transportation is convenient, and the entrance fee is just NT\$60, significantly lower zoos in other countries. The Taipei Zoo story is now 100 years old and still evolving, and each animal has its own unique tale to tell. In addition to Yuan Zai, the many other Taiwan-endemic and protected residents are well worth a visit—and are waiting to welcome you. 📍

9. Super-popular baby giant panda Yuan Zai's fame has spread far beyond Taiwan's shores.
10. There has been successful breeding recovery for the endemic Formosan serow; a unique attribute is territorial marking using its infra-orbital glands.
11. *Life of Pi* role player Black Sugar, a Formosan black bear, is one of the zoo's big stars.
12. The zoo's Formosan Animal Area, home to such protected species as the Eastern grass owl and Swinhoe's pheasant, is a visitor favorite.



Information

Taipei Zoo 臺北市立動物園

Add: 30, Sec. 2, Xinguang Rd. (新光路2段30號)

Tel: (02)2938-2300

Opening Hours: Daily year-round 09:00-17:00 (no entry after 16:00, Closed only on Chinese New Years Eve)

Website: newweb.zoo.gov.tw

Entrance Fee: Adults NT\$60; preferential admission/ groups NT\$30



A Look Behind the Mysterious Veil of a Military Area – The Former Air Force Command Headquarters Opens to Visitors

1



2



3

Soaring through the skies in fighter jets during the bitter years following World War II and taking part in many bloody battles over the Taiwan Strait when death was faced on a daily basis, the stories of the era's fighter pilots are not forgotten, but lie preserved in aged photos, waiting for someone to pick them up and learn about their heroic exploits.

Their story can now also be discovered at the former Air Force Command Headquarters (國防部空軍司令部), covering an area of approximately 69,500 square meters and situated on Section 3 of Ren'ai Road. During the Japanese era, it was housed in the Taiwan Governor-General's Office Research Institute (臺灣總督府工業研究所). In 1949, it was occupied by the Air Force Command, which finally moved to Zhongyong base in Dazhi (大直忠勇營區) in 2012. In March this year, the former headquarters was turned over to the temporary management of Taipei City Government, which has already carried out a series of revitalization measures. The site has now been opened as an area for tourism, exhibitions, etc., and it has planned to open part of the space as a workshop, allowing citizens to participate in discussion and dialogue, using public opinion to steer the direction of the site's future direction.

The first exhibition to be opened is The Age of Flight – Special Exhibition on the Air Force of the Republic of China (飛行的年代——中華民國空軍特展), planned by the Taipei City Archives Committee (臺北市文獻委員會), which is showing until May 29th. The exhibition,

1. The most eye-catching exhibit is the F-104 fighter jet parked in the square outside.
2. The exhibition has attracted many people who looked back with nostalgia over the glorious history of the Air Force of the Republic of China.
3. The exhibition contains all manner of artefacts related to the ROC Air Force from its creation to the War of Resistance against Japan and the Battle of the Taiwan Strait.

the first activity undertaken by Taipei City Government to temporarily revitalize and use the space, will focus on the development of the Air Force. Admission is free, and the exhibition allows the public to look behind the mysterious veil of what was once a restricted military area.

Seven themed exhibition areas have been planned, including Travel Through Time – the Time to Take off, which helps visitors understand the development of the Air Force; Dominate the Sky – The History of Valiant Eagles, which details the history of the Republic of China Air Force; Take a Look – Bloody Battles in the Clear Blue Sky, which reveals the glorious battle record of the Air Force; Have Adequate Armaments – Landing on a Peaceful Life, which introduces each unit of the Air Force and the beauty of all kinds of fighters; Launch – Heroes' Biographies, which recounts the stories of the heroes of the Air Force and key figures in its development; Fly Above the Clouds – Prestigious Pioneers, which allows visitors to see the extraordinary aviation technology which was the pride of East Asia; and Transport Through the Air – Taiwan in Three Dimensions, which allows the public to experience the history of Taiwanese aviation through their own senses.

The two-story exhibition space also contains all manner of artefacts related to the ROC Air Force from its creation to the War of Resistance against Japan and the Battle of the Taiwan Strait, and there is also an abundance of items such as aircraft models, medals, and photographs. Still more remarkable are the exhibits which use cutting-edge technology, such as touchscreen technology, 3D exhibitions, and multimedia, which reconstruct the glorious history of the ROC Air Force.

The most eye-catching exhibit is the F-104 fighter jet placed in the square outside; although it has been decommissioned, it is as dashing and spirited as ever. In order to show it in all its glory, it has been brought here from the Ching Chuan Kang Air Base (空軍清泉崗基地) in Taichung City (臺中市), and a number of weeks were spent disassembling, restoring, preserving, and reassembling it, to allow it to be displayed in its full glory. Additionally, the works of the 3D artist Tu Lung (圖龍) have also been put on display. Taking the ground as his canvas, he has produced and painted free-standing 3D jets, simulating the overwhelming feeling of flight.

The origami master Zhuo Zhixian (卓志賢) has also been invited to come to the exhibition personally, and teach



visitors how to make origami plane models; classic Taiwanese movies such as *Heroes of the Eastern Skies* (寬橋英烈傳) and *A Moment of Romance III* (天若有情III烽火佳人) will also be shown every day – foreign friends are welcome to come and look back on the thrilling tales of the Republic of China's Age of Flight! [📍](#)

4. Part of the space is a workshop, allowing citizens to participate in discussion and dialogue, using public opinion to steer the site's future direction.

5. During the exhibition period, visitors will also be taught how to make origami plane models.

Information

The Age of Flight – Special Exhibition on the Air Force of the Republic of China

飛行的年代——中華民國空軍特展

Add: 55, Sec. 3, Ren'ai Rd. (仁愛路3段55號) former Air Force Command Headquarters, Ministry of National Defense (國防部空軍司令部舊址)

Tel: (02)2311-5355, ext. 21

Time: Until 5/29, 10:00~17:00; Sat/Sun extended hours to 18:00



A New Home for the Taipei Flower Market in Neihu



Launched in 1997, the Taipei Flower Market (台北花市) was Taiwan's first privately-run flower market, and also the largest market in the country. This amazingly colorful and fragrant place has called Ruiguang Road (瑞光路) in Neihu District its home for 17 years.

However, times change. The original market site will become the Taipei Cloud Computing Industrial Park (臺北市雲端產業園區), and the flower market was moved to the Xinhua 3rd Road (新湖三路) commercial district (about 2 kilometers from the original location) in March this year. The market now runs along either side of Minshan Street (民善街). The architecture is rainbow-like in color and modernistic in style, and the canvas awnings of the old site have been discarded. A new city landmark close to other major hypermarkets, and a venue with value placed on landscaping and leisure enjoyment, the Taipei Flower Market has a brand new character and ambience.

The market's new home is a better one, covering 2.8 hectares in area, with room for 286 stands in two buildings, connected by a scenery-enhancing sky bridge. The extra space allows for clearer product-area differentiation, helping customers more easily identify where the items they need are located. There is now also a food-court zone where shoppers can enjoy a rest.

The key difference between the Taipei Flower Market and Jianguo Holiday Flower Market (建國假日花市) is their operation times. The first is open on weekdays, from 4 am to noon. Because the Taipei Flower Market engages in both wholesale and retail sales, it is an important source for city flower shops. On a visit to the

market you are immersed in a splendid world of flowers and plants of mind-boggling variety, and can often dig up treasures at wonderfully low prices. The crowds have been big since the move, and the heightened spaciousness and comfort has brought plaudits from both vendors and visitors. In addition, the newly introduced computerized auction and sales/distribution services have put the market on a par with such global flower powers as the Netherlands and Japan.

You are hereby cordially invited to come for a browse around the Taipei Flower Market in its new home, enjoying the world of floral beauty in a venue providing much greater space and comfort. ➡

1. The Taipei Flower Market, which handles both wholesale and retail business, is a key source of good for Taipei flower shops and a great place for low-price quality buys for travelers.
2. The rainbow-like colors and modernistic styling of the Taipei Flower Market give it an all-new character and ambience.

Information

Taipei Flower Market 台北花市

Add: 28, 36, Xinhua 3rd Rd. (新湖三路28、36號)

Tel: (02)2790-9729

Time: Mon~Sat 04:00~12:00 (closed Sun)

Website: www.tflower.com.tw

Transportation:

Bus/ 63, 204, 518, 552, Small 2, Blue 7, Blue 26; get off at Xinhua 3rd Rd. intersection stop (新湖三路口站)
 Metro/ Taipei City Hall Station (市政府站), transfer to bus 552, Small 2, Blue 7; or Gangqian Station (港墘站), transfer to Blue 7 bus

The Joy of Non-Toxic Farming at the Taipei Expo Park Sky Farm



In the middle of this big, densely populated, bustling modern city, finding a plot of land to do a bit of gardening – much less farming – is an ambitious task indeed, however not impossible. For example, starting in April this year people have the opportunity to be urban farmers, and to experience the joys of cultivating their own veggies.

The city government is pushing the idea of green roofs to promote food and farming education among the citizenry and to make use of old building. The terraces originally used for seating in the former Zhongshan Soccer Stadium (中山足球場) are now a Taipei Expo Park Sky Farm, creating the first large-scale "urban farm" in the Taipei metropolitan area. The Department of Economic Development (產業發展局) of Taipei City Government kicked things off by first inviting a hundred parents to bring their kids to the sky farm to harvest vegetables, which were then used to make their own salads, giving city kids a glimpse of the joys of life down on the farm.

The new farm is 4,000 square meters in area. Easy-to-use planting pots make it easy to get started. The main crops are vegetables, melons, and herbs, and natural, healthy, non-toxic cultivation is being emphasized. This is a method sure to produce delicious, plump seasonal treasures, including pea shoots, cucumbers, lettuce, baby tomatoes, and strawberries. Registration for plot adoption was opened to the public at the beginning of April.

Those interested in taking part should expect to spend at least two hours a week on the various

elements of cultivation – planting, watering, weeding, and harvesting. During the week, volunteers help with the watering and fertilizing. There are over 30 different choices of produce to grow, and when it is ready, you can take your harvest home. Enjoying treats you have grown yourself, you will have peace of mind that the result is healthy food, and a glimpse of what self-sufficiency means.

With this happy farm, the dream of growing some of one's own food is no longer just a dream for city folk. You will get your hands dirty, and bring your newly cultivated knowledge back home to maybe create an attractive little garden on your balcony. This eco-friendly green-movement activity is one of the friendliest moves you can make when it comes to your weekend leisure and your choice of lifestyle. Come on out to the Taipei Expo Park Sky Farm to experience the fun and fulfillment of the urban farming! 🌱

1. The tiers originally used for seating in the former Zhongshan Soccer Stadium are now home to the Taipei Expo Park Sky Farm, the first large-scale "urban farm" in the Taipei metropolitan area.
2. Users can enjoy the experience of healthy, natural non-toxic farming, doing their part for the green movement while both learning and having fun.

Information

Taipei Expo Park Sky Farm 花博公園天空農場

Add: 1, Yumen St. (玉門街1號)

Tel: (02)2182-8886

Website: www.taipei-expopark.tw

Come to Taipei and Experience the Beauty of *Indigo Dye*

Beside the flowing creeks of Yangmingshan (陽明山), you will discover a plant which grows in clusters – this is Taiwan's famous bluegrass (*Strobilanthes flaccidifolius* Nees), also known as *Dajing* (大菁) in Chinese. In the 19th century, the dye produced from bluegrass was the pride of Taiwan, "a gift from Heaven" in the eyes of the common people. With the coming of the 20th century, artificial dyes became popular, and natural indigo dye (藍染; blue dye) also gradually faded away in Taiwan. It is surprising that today, a century later, beautiful natural indigo dye has once again reappeared in the lives of the Taiwanese. Let's explore the beauty of Taiwanese indigo dye together.



Star Industry Declines: Lies Idle for Almost a Century

There are four major varieties of bluegrass in the world, including *Strobilanthes cusia* (山藍), *Indigofera tinctoria* (木藍), *Polygonum tinctorium* (蓼藍), and *Isatis tinctoria* (菘藍). It is bluegrass which grows in the mountainous areas in northern and central Taiwan, while *Indigofera tinctoria* grows on the southern plains. By means of a unique fermentation method, our ancestors obtained pure natural indigo (藍靛), that is, indigo dye, which was also known as mud indigo (藍泥) due to its mud-like appearance.

The history of the Taiwanese indigo dye industry can be traced back to the 17th century, when the Dutch inhabited Taiwan. The Dutch discovered that Taiwanese bluegrass was both of better quality and cheaper than European woad, and did their best to promote it, founding Taiwan's indigo dye kingdom. In the middle of the 19th century, Taiwan's indigo dye industry flourished. Data from 1880 shows that an area of 7,190 acres was used for cultivation of bluegrass, and mud indigo had become one of the main exports, the third biggest, second only to sugar and tea leaves. What's more,

1. Indigo dye was the pride of Taiwan, "a gift from Heaven" in the eyes of the common people and was once one of the biggest exports. (Photo courtesy of iGarden City)
2. Beautiful natural indigo dye has once again reappeared in the lives of the Taiwanese. The picture shows an iGarden City indigo dyeing experience activity.
- 3-4. Yangmingshan's Hushan Elementary School has an indigo garden and pool on campus allowing pupils to experience picking indigo and washing dyed fabric. (Photo courtesy of Hushan Elementary School)



1

as people often wore indigo clothes while working or travelling, indigo dye also became the most popular fashion of its time.

According to the records kept by the Yangmingshan National Park Headquarters (陽明山國家公園管理處), the Mt. Dadun (大屯山) system in Beitou District is suited to cultivating bluegrass, and it was widely cultivated in the heyday of indigo. Aside from this, the pits used to produce indigo mud were called *jingque* (菁礬), and many places in the area are named after them, such as Dingjingque (頂菁礬), Zhongjingque (中菁礬), Xiajingque (下菁礬), Jingshan Road (菁山路), and Pingjing Street (平菁街), all of which have recorded the miracle of Taiwanese indigo.

However, when artificial dye became popular in 1890, natural indigo was gradually eliminated from the market, and the history of Taiwanese indigo came to an end in 1920. Although no one cultivate bluegrass, there are still patches of bluegrass on Dadun Mountain, distributed around Jingque Creek (菁礬溪) and the Jingshan Nature Center (菁山自然中心). There are also a number of jingque sites in Yangmingshan National Park, which allow visitors to trace the history of jingque sites. Furthermore, after environmental awareness has raised its head in recent years, the craft of indigo dye has roused from slumber, and come back to life as a result of promotion in local communities and workshops. The diligence of these workers has rediscovered the beauty of Taiwanese indigo dye, which had lain dormant for a century.

Clothes With Vitality Gifts From Heaven

Indigo dye has been praised as "a gift from Heaven" since ancient times. So, wherein lies its beauty? Chen Lingxiang (陳玲香), who has been teaching indigo dyeing for many years, and is currently an artist working in indigo dye, hits the nail on the head, "Natural things just aren't the same!" The color of chemical indigo dye is too mechanical, tending toward black and purple, whereas natural plants maintain a unique, still, soft, stable quality, allowing them to display a different kind of beauty even though the dye may have faded.

Chen says that "indigo dye is the dye of the ordinary people." Previously, relatively poor people could not afford to wear silk, whereas indigo dye, particularly blue indigo dye, which could make material dirt-resistant, wear-resistant, and provide protection from insects, could be used on cotton and linen, and so became the best protective agent for cloth. As it is entirely natural, no sizing agents, mordants, or other chemical additives can be used, otherwise the dye will be prone to fading.

However, the process of producing liquid dye is extremely complex, with a high cost, and is also time-consuming and labor-intensive. Chen says, "the cells



3



4

Indigo Dye Experience



Material to be dyed should be folded into a triangle; the more folds there are, the less even the color will be.



Use five-six ties to tie material firmly.



Material should first be washed in clean water for 15 minutes to allow the fibers to steep, then remove and dry.



Put gloves on and slowly place the material within the dye.

Indigo Dyeing Reminder

Material which has been recently dyed has an unstable period lasting between one and two years. It is recommended that material is used immediately, after being used and washed multiple times, the color will become fixed. As Taiwan's climate is damp, material can be sealed within a plastic bag when not in use, and preserved in a closet or drawer.

in dye are composed of living bacteria, and nutrients such as sugar, lime and alcohol must be added to enable it to survive and bolster their vitality." Indigo dye is a living thing, and the depth of its color can be used to determine the length of the lives of the bacteria: the deeper the color the more bacteria there are and the fresher the dye, and as time passes and the bacteria become fewer, the color also gradually fades.

Experience Indigo Dye – A Beautiful Wonder

There are four fundamental techniques in dyeing: tie dyeing (夾/綁染), sewing and dyeing (縫染), dyeing with a mold (型染) and resist dyeing (蠟染), of which tie dyeing is the best place to start for a beginner. Chen gives a demonstration by way of example:

The scope of application for indigo dye is wide, and is no longer limited to clothing and dyeing white cloth. In addition to everyday applications such as fabric bags, shoes, wall decorations, door curtains, cushions,





Remove the material from the dye, and after allowing it to come into contact with the air for 3~5 minutes, soak in the dye again; this time, repeat 3~4 times.

Remove from dye and remove ties, then air in the sun for 3 minutes to ensure that the material has turned indigo.

Clean water can be used to wash the material a few times, you have finished only when no indigo water appears when material is wrung.

Spread material out; can be used immediately upon drying.

and headscarves. It can even serve as a style in fashion; even the scarves of the famous brand Hermès were once designed with indigo dye as a material.

There are many places where you can experience indigo dyeing. If your group consists of one to three people, you can go to the Sozam Indigo Art (草山藍坊) for personal instruction from Chen – it will cost only material fees. If your group is larger, you could also go to Hushan Elementary School (湖山國民小學), iGarden City (北農仙人掌園) or Zhanghu Cultural History Workshop (樟湖文史工作室) and give dyeing a shot together. If you'd like to experience the beauty of indigo dye, you must register in advance. We welcome foreign friends on a journey through the dyeing process, and to experience Taiwanese indigo, reawakened after a century-long slumber! 🌿



5. There are four basic techniques in indigo dyeing: tie dyeing, sewing and dyeing, dyeing with a mold and resist dyeing that can turn a piece of cloth into a work of an endless variety of styles.
6. The indigo dyeing course of Hushan Elementary School offers foreign friends an opportunity to experience the beauty of indigo dyeing. (Photo courtesy of Hushan Elementary School)
- 7-8. Indigo dyeing has a wide range of uses, and is both practical and fashionable, possessing its own unique beauty.

Indigo Dye Experience Information

Sozam Indigo Art 草山藍坊

Add: 1F, 3-1, Aly. 18, Ln. 160, Dahu St.
(大湖街160巷18弄3-1號1F)

Tel: (02)8792-9304, 0912-413-511

Time & Fee: Fri~Sun, only material costs need to be paid; capacity 1~3 people

Hushan Elementary School 湖山國民小學

Add: 11, Hudi Rd. (湖底路11號)

Tel: (02)2891-7453 (Peitou Culture Foundation; 北投文化基金會)

Time & Fee: Sat/Sun, NT\$500/ person, capacity 6~20 people

iGarden City 北農仙人掌園

Add: 40, Sec. 2, Hushan Rd. (湖山路2段40號)

Tel: (02)2861-7759, 0968-518-751

Time & Fee: Mon~Sun, NT\$250/person, capacity 10~20 people

Zhanghu Cultural History Workshop 樟湖文史工作室

Add: 19-1, Ln. 38, Sec. 3, Zhinan Rd.
(指南路3段38巷19-1號)

Tel: (02)2937-9729

Time & Fee: Tue~Sun, NT\$250/person, capacity 8~10 people

Taipei's Delectable Cafes: A Concerto of Coffee and Fine Food

Drinking coffee has become a familiar part of many people's lives here in Taipei, and cafes have sprung up everywhere. In this issue we introduce four cafes of special character that also offer terrific food, where readers can enjoy both a tasty brew and culinary treats.



A Taste of Home Life From Hong Kong – Canopy Cafe & Lifestyle

Canopy Cafe & Lifestyle (婆婆) is run by a husband and wife team who moved here from Hong Kong. Chen Weimin (陳偉民), who studied visual arts in school, has a passion for furniture accessories, and his dream was to create a comfortable space that would have his collection on tasteful display and make customers feel as though they were visiting friends sitting in his living room. After talking with his wife, an excellent cook, they decided to move to Taipei and open a café restaurant.

The menu features many distinctive selections, including Bouchons aux Champignons & Olives (起司蘑菇橄欖軟木塞), baked-egg treats made with mushroom, onion, green olive, and fresh French-style cream. The name comes from their resemblance to bouchons, or corks. The tart-like creations, accompanied by a salad and toast with yeast and honey, make a light meal that is both filling and





2



3

healthy. The nutritious Hong Kong Style Slow Cooked Soup (香港養生時令老火湯) is an old recipe from wife Kia's side of the family, made by her father, a Chinese-medicine pharmacist, to keep his four daughters healthy, and adjusted every week by adding seasonal ingredients. She has "improved" the recipe a bit so that it best matches her Hong Kong-style home cooking, and it has become one of the café's most popular offerings.

The owner-couple insists on using fresh ingredients, and buy much of their produce from the market each day. Their hen's eggs are delivered directly from Shih An Farm (石安牧場) in Kaohsiung. They are equally particular about how their coffee is made, and use a coffee machine and advanced water filter that together cost several hundred thousand Taiwan dollars. Each cup is rich and mellow. The Café Sicilia (西西里咖啡) is a blend of fresh lemon juice and iced coffee shaken by hand. The coffee has a unique fruit-acid kick that is a pleasant surprise. Another special blend is a French Grand Marnier Café Latte (法式澄酒干邑拿鐵), which give the brew a silky smoothness and a spirited bouquet.

A majority of the customers here are regulars, who sit in their favorite corners and engage the owners in amiable conversation on the matters of the day, as comfortable and relaxed as if they were sitting down to a meal in their own homes.

1. Canopy Cafe & Lifestyle's specially made Bouchons aux Champignons & Olives, along with its specially mixed Café sicilia, provides a distinctive taste medley.
2. Canopy Cafe & Lifestyle's nutritious signature specialty, Hong Kong Style Slow Cooked Soup, is an old recipe from wife Kia's side of the family.
3. Canopy Cafe & Lifestyle's couple owners moved to Taipei to fulfill a dream of creating a comfortable space that would make customers feel as though they were visiting friends.
4. Dayan Café's décor theme is the Wachifield anime world; the main character, Dayan the cat, sits in the small entrance-area courtyard.
5. Cakes in the shape of Wachifield characters win young girls' hearts.
6. For the Spanish Pancake Brunch Plate, the pancakes are cleverly presented on a specially-made small iron skillet.



4



In the World of Wachifield – Dayan Café

Located in the grid of busy lanes and alleys in Taipei's east district, the decorative theme at Dayan Café (達洋咖啡館) is the Wachifield world created by Japanese artist Akiko Ikeda. You will find the main character, Dayan the cat, sitting in the small courtyard by the first-floor entrance playing a violin, giving a clue that you're about to enter a fairytale world. The café on the second floor is filled with imagery from the world of Wachifield, from paintings, puppets, and ornaments to dishes, cups, and coasters.

The café offers light meals featuring risotto, Italian spaghetti, waffles, etc. A popular selection is the Spanish Pancake Brunch Plate (西班牙蛋餅早午餐), made with cauliflower,



5



6

mushroom, red and yellow pepper, cherry tomato, and egg. It is presented in a specially-made small iron skillet, accompanied by toast and salad and an inserted place card featuring a Wachifield character. Other novel selections are a latte decorated with an image of a Wachifield star and cakes in the shape of the various characters. Adorable cuteness, the prime ingredient at this gourmet café, is served here in generous portions.



8



A Taste of French Romance – Café Madeleine

The flagship store of Taiwan's earliest bookshop chain, Kingstone Bookstore (金石堂書局), is on Tingzhou Road (汀州路) in a neighborhood that brims with learning and culture. When it opened there was a coffee shop on the left side of the store providing simple meals, and it quickly became a favorite haunt for local writers, who would settle down for extended periods of "in-store" writing. Today, Kingstone's second-generation leader, Zhou Pinhui (周品慧), who lived in Paris for 30 years, has recreated the coffee shop in the style of a Paris bistro and her own Paris home, bringing a slice of Parisian life to Taipei. The romantic, cozy dining space and private home-style cuisine, along with jazz concerts on Saturday nights, has won plaudits and a loyal following.

The menu's Parisian Lady (巴黎女人沙拉) features lettuce, sliced apple, black olives, chicken breast, and nuts, along with a sauce made with wine vinegar, olive oil, lemon juice, and honey. In France, this is a favorite lunch for



7



9

ladies. The Roast Pork, Countryside Style (法式女主人燉肉) is a treat Zhou often prepares herself for family members. Slabs of marbled pork are first fried, then roasted in an oven for two hours along with sliced onion and bacon. When served, slices of the pork are placed atop potato, then covered with fresh heavy cream and broth from the roast. The dish has a delectably aromatic fragrance and a soft, smooth texture. Among the café's other signature treats are French fries dipped in truffle oil before frying, and risotto made with pan-fried scallop and truffle. The delicious truffle aroma permeates the dining area – the aroma of culinary joy. To cap their leisurely taste adventure, patrons can follow their meal with a cup of mellow Arabica black coffee, hand-made lemon tart, and the café's signature Madeleine Cake (瑪德蓮蛋糕).

- 7. At Café Madeleine owner Zhou Pinhui has recreated the coffeeshop in the style of her former Paris home, bringing a bit of Parisian life to Taipei.
- 8-9. The Roast Pork, Countryside Style and risotto made with pan-fried scallop and truffle are treats Zhou often prepared for family members when in Paris.
- 10. Café Madeleine's Arabica black coffee is both mellow and refreshing.



11



Coffee at Reasonable Prices, and Creative Cuisine – Waffogato

Originally a café targeting female customers with coffee, waffles, and other sweet things, in response to a demand from male customers for more hearty and filling fare, Waffogato began offering full meals. One of the most popular selections with the lads is the Angus New York Steak (安格斯牛紐約客), a large and succulent cut that weighs in at 10~12 ounces and comes with truffle-oil French fries and salad with vinaigrette. Another delicious and much-in-demand choice is the Salmon Special Meal (北歐頂級鮭魚特餐), which features premium Scandinavian salmon, baked country-style bread, poached egg with salsa sauce, and salad with vinaigrette.

The café's coffees are made with Lavazza and illy beans, and each cup is richly aromatic. The house signature sweet treats are Homemade Ice Cream Strawberry Caramelized Bread (手工冰淇淋草莓焦糖麵包) and Mochi Waffle Pudding (烤麻糬宇治抹茶鬆餅布丁). Both come with fresh whipped cream and a honey sauce. The waffle, crispy outside and silky soft inside, perfectly sweet, and wonderfully fragrant, immediately brings a wave of joy to one's day.

Each of these establishments has its own special style and character, and collectively they add much to Taipei's lively gourmet coffee & fine food culture. Find out for yourself with pleasant explorations down the city's lanes and alleys, dropping in at all these fine choices and at the many other fine café restaurants around town that are waiting to be discovered. 📍

- 11. Home-made Ice Cream Strawberry Caramelized Bread, a Waffogato signature treat.
- 12. Waffogato's Angus New York Steak and signature coffee are an unbeatable combination.
- 13. Located in Neihu, Waffogato's décor is stylishly trendy.



12



13

Information

Canopy Cafe & Lifestyle 婆婆

Add: 4, Aly. 19, Ln. 283, Sec. 3, Roosevelt Rd. (羅斯福路3段283巷19弄4號)

Tel: (02)2366-0381

Dayan Café 達洋咖啡館

Add: 55, Ln. 187, Sec. 1, Dunhua S. Rd. (敦化南路1段187巷55號)

Tel: (02)2779-0083

Café Madeleine 瑪德蓮書店咖啡

Add: B1, 192, Sec. 3, Tingzhou Rd. (汀州路3段192號B1)

Tel: (02)2365-5980

Waffogato 瓦法奇朵咖啡館

Add: 1F, 286, Sec. 6, Minquan E. Rd. (民權東路6段286號1F)

Tel: (02)2630-5282

Hard Work, Fine Tea: Sampling Taipei's Best Brews

Fragrant and sweet, fine Taiwanese tea, whether produced by famous brands or young, innovative tea businesses, has already become an excellent, must-buy gift for international tourists to Taiwan. Each business produces tea in strict accordance with ancient methods and is developing new flavors of tea and tea-related food in order to promote Taiwanese tea. This article focuses on two long-established brands and two innovative new ones, introducing the reader to fine tea and exquisite snacks, and the leisurely pleasure and comfort of sampling tea in a venue with style.



Adhering to Traditional Tea Processing Methods – The Chang Hsie Shing Tea Shop

Taipei's Wenshan District produces an abundance of *Tieguanyin* (鐵觀音), a famous variety of tea leaf produced in northern Taiwan, cured and dried under moderate heat, and rolled into balls. Renowned Chang Hsie Shing Tea Shop (張協興茶行) in Muzha (木柵) has its own tea plantation, and since it was established in 1954, it has always been fastidious in its processing techniques, and regards the idea of "loyalty to the original taste" as important. Chang Dingding (張丁頂), the first-generation manager, practiced firing the tea over an extended period with *Longan* charcoal (龍眼炭), which thoroughly releases the tea's fragrance, gives it a sweet taste, leading it to be named *yidilu* (一滴露;



2

dewdrop). It has become synonymous with Tieguanyin in Muzha. Another kind of tea is made from *Jin Xuan* Tea (金萱茶) grown in Pinglin District in New Taipei City (新北市坪林區); fermenting and drying causes the tea leaves to undergo glycosylation, and the sweet and pleasant tea's floral fragrance changes to one more reminiscent of jackfruit, hence its name, "Jackfruit Tea" (波羅蜜茶).

The Chang Hsie Shing Tea Shop has gone through many renovations and has now been passed on to the third generation, but large iron tea drums are still arrayed along the walls inside the store, interspersed with a few old kettles as evidence of this grand old tea store's long history.

After Taiwan's retrocession in 1945, tea production reduced to around 1,400 tonnes, only 8% of the quantity produced at the peak period during the Japanese era. As the tea market gradually shrunk, some of Chang Hsie Shing Tea Shop's tea plantations were replaced with 3,000 apricot trees. When they bloom in



3

1. Chang Hsie Shing Tea Shop's large old style iron tea drums are still arrayed in the wall cabinets inside the store.
- 2-3. Chang Hsie Shing Tea Shop was established in 1954 has gone through many renovations but retains the old shop front. It offers its home-made Tieguanyin Nougat, egg rolls, cookies, and other gifts.
4. Shan Shan Cha provides innovative flavors, such as the coffee-based Mountain Series paired; the tea is placed atop the coffee in the form of crushed ice, and the experience of smelling coffee and tea fragrance at the same time is an exceptional one.
5. Shan Shan Cha offers oolong tea and green tea grown in Nantou County, and sells small fins of tea leaves and also teabags.
6. Shan Shan Cha offers a fashionable space where tea and meals can be enjoyed and also sells tea in packs that make ideal gifts.

February and March, the fragrance which suffuses the plantation attracts countless travelers, and they have become a popular scenic area in Maokong (貓空). The Tea Shop is still developing its own Tieguanyin Nougat (牛軋糖), egg rolls, cookies, and other gifts, providing new commercial opportunities for the tea leaf.

From the Mountains Natural, Shan Shan Cha

A tea farmer, helped by a wealthy technology entrepreneur who loved drinking tea and climbing mountains, decided to use natural farming methods, without fertilizer or pesticide, when replanting his tea plantation after the 921 Earthquake. They allowed the tea to grow naturally on the slopes of Mt. Nanhua (南華山) in Nantou County (南投縣), 1,400 meters above sea level. They opened a teahouse called Shan Shan Cha (山山來茶) in Taipei City after they had harvested the first tea leaves 5 years later, allowing the people of Taipei to enjoy natural, fine tea from the mountains.



4



5



6

The founder designed "Ice-Drip Tea" (冰滴茶) especially to produce fine tea, allowing melted ice water to slowly soak into the tea leaves, thus retaining catechuic acid, which is destroyed by hot water, and some tannin, making the tea sweeter and healthier. The teahouse has not only been innovative in the area of tea-brewing methods, but also provides innovative flavors, such as the Mountain Series (山嵐系列), which is paired with coffee. In order to preserve the fresh fragrance of the tea, the tea is placed atop the coffee in the form of crushed ice, and is served with tea biscuits. The experience of tasting coffee and smelling tea is an exceptional one.

This teahouse also sells tea-flavored snacks, as well as oolong tea and green tea grown in Nantou County, small tins of tea leaves and teabags.

Steadfastly Producing Fine Tea, and Sharing it With the Public – Chang Shun Tea

Chang Shun Tea Yongkang Branch (長順名茶永康店) in Yongkang Commercial District (永康商圈) is one of Taiwan's long-established brands, having been founded in Mingjian Township (名間鄉), Nantou County in 1907. Its founder Yang Huang (楊黃), stayed true to the idea of producing tea of the finest quality, and became a famous local farmer. The tea plantation was passed on to the second generation, who in order to allow more people to share in the taste of fine tea, brewed a vat of high mountain



7 tea every morning and offered it free of charge to Songboling Shoutian Temple (松柏嶺受天宮). Taiwanese customarily call this "fengcha (奉茶)" or "offering tea." Subsequently, the propitious name "Chang Shun," which means successfully achieve a long-lasting business, was chosen by the temple gods, with the hope that the tea store would enjoy success.

The venerable store has now been passed on to the 4th generation, and has already opened a series of chain stores all over Taiwan. Although this century-old store has already stepped into the modern era, it still stays true to producing tea in the exacting, traditional



8



9

way. Tea farming co-operatives at the height of 1,000 to 2,600 meters above sea level have been established in Nantou County and Chiayi County (嘉義縣). The quality of high mountain tea has been stabilized by nationally-recognized quality control methods. Tea production, however, is done in accordance with the method passed down by a master tea producer of Anxi County (安溪縣), China: longyan charcoal is used to dry the tea leaves slowly, producing a sweet and fragrant tea.

Chang Shun Tea Yongkang Branch primarily deals in Alishan high mountain tea (阿里山高山茶), Shanlinxi Oolong Tea (杉林溪烏龍茶), Lishan Tea (梨山茶), and Oriental Beauty Tea (東方美人茶). There's also tea aged for 20 or 40 years, which entices many people from Japan and Hong Kong to pay a visit. With the intention being, as ever, to share fine tea, just like when free tea was given out at the temple, the store offers every customer who enters the store a cup.



10



11



Innovative Hakka Lei Cha – SIIDCHA

Lei cha (擂茶) is a type of tea unique to the Hakka (客家) people: raw sesame seeds, fried peanuts, and green tea leaves are crushed and then boiled in water, creating a hearty drink used to receive honored guests, which quenches the thirst and relieves hunger. Lei cha was later improved with the addition of many other kinds of seed, such as pine nuts, sunflower seeds, and pumpkin seeds, making lei cha richly nutritious.

Linyuan Foods Co., Ltd. (林園食品有限公司), which was established in 1975, is venerable old five grain powder processing factory, which provides the grain formula needed for lei tea. After the second generation took over, the factory aimed to try innovative new approaches to making Hakka lei cha. The traditional method of frying seeds was replaced with roasting them at a low temperature, which retains nutrients and lowers the water content to 4% or less, which mean the seeds keep better and produce healthy lei cha for modern people. The second generation of owners has also established the SIIDCHA (吾穀茶糧), promoting innovative tea and tea snacks.

SIIDCHA's branch in the eslite Spectrum Store Songyan Branch (誠品生活松菸店) sells in over 30 types of blended grain tea, various kinds of grain products, and also developed many new flavors, such as apple and sliced lotus root, roseberry, and buckwheat green tea. As well as tea tasting, the store also provides an interesting complete lei cha experience.

A cup of fine tea in May, with spring in the air, allows one to feel nature's overflowing vitality. 🌿



12



13

7. Chang Shun Tea was founded in 1907, and retains an overseas business license issued by the government in the Japanese era.

8. Chang Shun Tea's tea production is done in accordance with the method passed down by a master tea producer of Anxi County, China, that involves roasting the tea leaves slowly.

9-10. Chang Shun Tea Yongkang Branch primarily deals in Alishan high mountain tea, Shanlinxi Oolong Tea, Lishan Tea, and Oriental Beauty Tea. There's also tea aged for 20 or 40 years.

11. Lei cha is a type of tea unique to the Hakka people, SIIDCHA improved it with the addition of many other kinds of seed, such as pine nuts, sunflower seeds, and pumpkin seeds, making lei cha richly nutritious.

12-13. SIIDCHA sells over 30 types of mixed grain tea. The eslite Spectrum Store Songyan Branch also provides an interesting complete lei tea experience.

Information

Chang Hsie Shing Tea Shop 張協興茶行

Add: 93, Sec. 2, Zhinan Rd. (指南路2段93號)

Tel: (02)2939-4866

Shan Shan Cha 山山來茶概念店

Add: 603, Ruiguang Rd. (瑞光路603號)

Tel: (02)2627-9533

Chang Shun Tea Yongkang Branch 長順名茶永康店

Add: 20, Ln. 4, Yongkang St. (永康街4巷20號)

Tel: (02)3393-7545

SIIDCHA Songyan Branch 吾穀茶糧食茶館松菸店

Add: 3F, 88, Yanchang Rd. (菸廠路88號3F)

Tel: (02)6636-5888, ext. 1506



A Trip to Jiuzhuang Tea Mountain – Exploring Local Tea Culture

The origins of the naming of Nangang, which means “south port” In Chinese, lie in its location on the Keelung River opposite the harbor north of Xizhi (汐止). It rains a lot here, and it’s humid, which, coupled with the surrounding high hills makes this area fine tea-growing country. Early settlers in what is today called the Jiuzhuang (舊莊) area soon noticed, and made Nangang the first place in Taiwan where *Baozhong* tea (包種茶) was grown, bringing plants from their home area, Anxi County in Fujian Province (福建省), China. Nangang Baozhong was regarded as Taiwan’s best leaf during the 1895~1945 Japanese era, praised even by the Japanese emperor. This issue we have mapped out a special Jiuzhuang Tea Mountain (茶山) excursion to take advantage of the May spring harvest in Nangang, exploring the fine brews and the unique local tea culture.



The Sweet, Delicate Fragrance of Organic Tea Farms

Before heading into the hills, stop for a breakfast bite at Nangang Laozhang Shaobing Shop (南港老張燒餅店), which is 30 years old. *Laozhang* (老張) means “Old Zhang’s,” and *shaobing* (燒餅) is a type of baked, layered flatbread, either with or without a filling. To get there, hop on the Taipei Metro, head out of Exit 5 at Nangang Exhibition Center Station (南港展覽館站), walk along Academia Road (研究院路), and when you reach the corner of Zhongxiao East Road (忠孝東路) you’ll see the shop sign just up this road, and no doubt also a line of customers out front. The owner exclusively uses dough naturally fermented over a long period, and slow-bakes the shaobing over a low charcoal fire. The bread is made and sold fresh each day. Among the shop’s extra-popular offerings



Nangang Laozhang Shaobing Shop (breakfast) → Qinming Tea Plantation (tea-farm scenery) → Guihua Suspension Bridge → Baoshu Tang Teahouse (lunch) → Guihualin Trail → Taipei Tea House – Nangang Tea Processing Demonstration Center (tea-culture experience) → Guanyun Residence (dinner)



3



4



5

are savory "black pepper cakes" (胡椒餅), "crab pastry cakes" (蟹殼黃酥餅), and slightly sweet "crispy black-sesame cakes" (黑芝麻酥餅), "sugary flakey pastry" (糖糕酥餅), and "crispy red-bean cakes" (紅豆酥餅).

After buying some shaobing, head back to the corner of Academia Road, turn right, walk to nearby Funan Temple (富南宮), and catch the ultra-convenient Small No. 5 bus, which will take you up Jiuzhuang Tea Mountain. There are no set stops for the bus—you can flag it down anywhere along its route and hop off where you like.

Get off after you have seen Baoshu Bridge (寶樹橋). From here, your first stop is Qinming Tea Plantation (欽明茶園). Yu Qinming (余欽明) is the tea farmer on Jiuzhuang Tea Mountain who has won the most awards. He processes the tea in the courtyard of his own home. The surrounding area, today called Section 2, Jiuzhuang Road (舊莊路2段) but in the past called Dakeng (大坑), has the richest history of all northern Taiwan tea-growing areas. Sweet osmanthus, used extensively by local farmers, is also grown on Jiuzhuang Tea Mountain. Its fragrance adds flavor to one of Nangang's best-known specialty products, osmanthus Baozhong tea. Yu Qinming invites one and all to come to his farm during the spring tea-harvest season during April and May, walk through his fields and taste pesticide-free tea, enjoying its "certified organic" sweet taste and aroma.



The Guihua Suspension Bridge Trail

Next, head further up the road to the entrance of the nearby Guihua Suspension Bridge Trail (桂花吊橋步道). Meander along the green path, and as you near the narrow Dakeng Stream (大坑溪) valley you'll hear

the sound of gurgling water and see a lovely wooden suspension bridge. Two carved-stone teapots adorn the head of the bridge. This is Nangang's secret garden, a place of vibrant greens and quiet stillness. Cross the bridge, continue along the Guihualin Trail (桂花林步道), and you will emerge Tianjin Tea Garden (添進茶園), with the historical Baoshu Tang Teahouse (寶樹堂茶園) opposite.



6

1 Baoshu Tang Teahouse – Delicious and Hearty Tea Cuisine

With high noon approaching, a rest stop for lunch at Baoshu Tang Teahouse is highly recommended. Among the lady owner's many delicious creations are delectable tea-oil chicken, tea-oil noodles, tea-leaf fried eggs, and osmanthus-tea potato chips, the last selection lightly sweet and floral, and free of greasiness. In addition to its osmanthus Baozhong tea, the teahouse has also created a number of gift items bringing together flower and tea, such as osmanthus plums, osmanthus vinegar, osmanthus ice cream, and osmanthus wine (桂花露), that distinctively capture the flavor characteristics of the local area.

1. Nangang is the origin site for Taiwan Baozhong tea; there are emerald-green tea plantations across the mountain, and a rich tea culture.
2. Nangang Laozhang Shaobing Shop's ultra-popular shaobing are made and sold fresh each day.
3. The small, quaint Guihua Suspension Bridge.
4. Qinming Tea Plantation, run by Yu Qinming, has organic-certified tea free of pesticides that brings the plantations fresh awards each year.
- 5-6. Baoshu Tang Teahouse has tea cuisine of great flavor, and has crafted a tasty range of gift items marrying Baozhong tea with osmanthus.



Another Nangang highlight is the Guihualin Trail, an easy walk, rich with floral scents. There are numerous entrances, all connecting with Jiuzhuang Road. After lunch, step out onto the trail at the Baoshu Tang Teahouse entrance, heading upward through the Guihualin, or the Osmanthus forest; the trail ends at the Taipei Tea House – Nangang Tea Processing Demonstration Center (台北找茶園——南港茶葉製造示範場).

Taipei Tea House: Experiencing the Jiuzhuang Tea Mountain Tea Culture

Taipei Tea House – Nangang Tea Processing Demonstration Center reopened this year until February. The Taipei City Government has entrusted management to an outside group, and both the exterior and interior have been completely redesigned. Timber is used as a primary decorative material on both the first and second floors, which are expansive and brightly lit. A superb panorama of far-off Taipei 101, Mt. Guanyin (觀音山), and even the Linkou Plateau (林口臺地) can be seen in the distance from the veranda. In the exhibition hall are interesting educational displays, with information

in Chinese, English, and Japanese, on the history of Jiuzhuang Tea Mountain and on the world's tea-drinking culture, as well as on tea-processing equipment used in the past and on different kinds of leaf from around the globe. There's even a section with a large bamboo tube containing lots for tea-theme divination poetry.

On weekends and holidays, the center holds a wide range of special tea-themed activities. Tea-arts masters are invited to give lessons and visitors can sample the tea arts of Chinese, British, and Japanese in different style rooms. There are also tea-dye sessions in which you can produce unique creative dyed fabrics, and DIY sessions for families in which participants use all sorts of different plant seeds to craft distinctive decorative items.

The center also offers guided eco-tours along the hiking trails on weekends and holidays. The trail offers easy, relaxed walking along flat boardwalks, and there are scores of different species of flora, including snakewood, acacia, and various ferns. Near the trail exit you will see *Jinxuan oolong* (金萱烏龍) and *Qingxin oolong* (青心烏龍) being cultivated. The 30-minute eco-touring offers visitors the chance to get up close to local plant life and also enjoy grand views of Taipei Basin (臺北盆地) in the distance; it's well worth an afternoon.



Savoring Tea Cuisine – Evening Landscape With Fireflies

In the evening, have dinner at the Guanyun Residence (觀雲居), directly in front of the Taipei Tea House – Nangang Tea Processing Demonstration Center. Red decorative lanterns are hung high across the entranceway, and as you walk in you will see a lovely landscape dominated by grand old emerald-leaf *Nagai podocarpus* and *Formosan michelia* trees. Guanyun Residence has been run by its female owner for 20 years. If it is your first visit, be sure to try the signature Baozhong tea stewed chicken, which comes with no other seasonings but the tea. A full bag of leaf is used in the stew, and the chicken broth is infused with the natural, fragrant purity of the tea. Homegrown sweet osmanthus is used in two other selections: the osmanthus tofu and osmanthus taro pudding. The tea-oil noodles, suffused with tea flavor and fragrance, are silky smooth and free of greasiness. After your mini-feast go outside to relax on the seats set up beside the osmanthus trees, spending the evening savoring the light show put on by countless fireflies.

For an unbeatable scenic trio of mountain and forest, plus the freshest, tastiest brew, a visit to Jiuzhuang Tea Mountain during late spring or early summer is hard to beat. 🌿

- 7-8. Taipei Tea House – Nangang Tea Processing Demonstration Center, expansive and brightly lit, brings in tea-arts masters to give lessons, deepening visitors' tea understanding.
- 9. In the exhibition hall are displays on Jiuzhuang Tea Mountain history, the world's tea-drinking culture, and tea-processing equipment.
- 10. The hiking trail has easy, relaxed walking along flat boardwalks, and there are scores of different flora species alongside.
- 11. Nangang's history-rich Guanyun Residence has been in business 20 years.
- 12. Among Guanyun Residence's special food treats are osmanthus tofu, Baozhong tea stewed chicken, and osmanthus taro pudding.



Information

Nangang Laozhang Shaobing Shop

南港老張燒餅店

Add: 602, Sec. 7, Zhongxiao E. Rd. (忠孝東路7段602號)

Tel: (02)2783-5591

Qinming Tea Plantation 欽明茶園

Add: 318-2, Sec. 2, Jiuzhuang St. (舊莊街2段318-2號)

Tel: (02)2782-2264

Baoshu Tang Teahouse 寶樹堂茶園

Add: 334, Sec. 2, Jiuzhuang St. (舊莊街2段334號)

Tel: (02)2783-5790

Taipei Tea House – Nangang Tea Processing Demonstration Center

台北找茶園——南港茶葉製造示範場

Add: 336, Sec. 2, Jiuzhuang St. (舊莊街2段336號)

Tel: (02)2653-0333

Guanyun Residence 觀雲居

Add: 324, Sec. 2, Jiuzhuang St. (舊莊街2段324號)

Tel: (02)2651-2161



Watch Fireflies in Taipei

On a late-spring night, sit by a babbling brook or on an open grassland on the outskirts of Taipei and watch fireflies flitting about, creating radiant dots in the inky black: countless twinkling stars descending from on high. It's a well-kept secret – in April-May and September-October, the city's mountainous outskirts, so easy to get to, are prime places for firefly-viewing.

Through most of its modern historical era, Taiwan was an agricultural society, and when night fell fireflies were a common – and very pretty – sight over farmland and along country roads. Changing times have brought change to the environment, and the firefly population has shifted to the higher hills and the banks of clear streams. However, the government is actively engaging in habitat protection, hoping to attract these lovely insects back to Taipei.

There has been significant progress, and on Yangmingshan fireflies now light up the night in Tianxiyuan (天溪園), Zhuzihu (竹子湖), and Datun Nature Park (大屯自然公園), and, elsewhere, on the trails of Sishou Mountain (四獸山), on the Xianjiyan Hiking Trail (仙跡岩親山步道), and in other locations. But you don't have to head up into the hills for firefly shows – they appear in number in such lower spots as around the Taipei Neigouxi Ecological Exhibition Hall (內溝溪生態展示館) in Neihu, Guizikeng Water and Soil Conservation Education Park (貴子坑水土保持教學園區) in Beitou, the low hills behind the Taipei Zoo, and both Fuyang Eco Park (富陽自然生態公園) and the reservoir in Rongxing Park (榮星花園公園) in the city area.

The Hushanxi Trail (虎山溪步道) on Sishoushan is a good example. Hop on the Taipei Metro's Bannan Line (板南線) and get off at Houshanpi Station (後山埤站). An easy 15-minute walk from the station brings you to the trailhead. Climb uphill for another 15 minutes and you will come to the Water Conservation Forest Monument (水源涵養保安林碑). Along the pleasant trail from this point to Shifang Zen Temple (十方大法禪寺) you will see a legion of fireflies dancing about in the woods and undergrowth.

According to Prof. Yang Pingshi (楊平世) from the Department of Entomology, National Taiwan University (國立臺灣大學昆蟲學系), who took part in Hushan Stream habitat conservation work in 1998, there are about 2,000 firefly species around the world, of which about 65 are found in Taiwan. Types commonly seen here include the Black-



1. The *Luciola curtilithorax* is Taiwan's smallest firefly; it has clear black scutellum on its thorax, and emits a yellow light with a high-frequency flicker.
2. The *Luciola anceyi*, which lives at low mountain elevations, is one of Taiwan's more commonly seen fireflies.
3. The *Diaphanes formosus* Olivier, Taiwan's most commonly sighted firefly, has yellow lines along the edges of its wing sheaths, source of its Chinese "yellow edge firefly" name.
4. The Black-winged firefly has a yellow thorax, black forewings, generally attains adulthood March-June, and emits a yellow-green light.





winged Firefly (黑翅螢) the red-thorax black-winged firefly, *Luciola kagiana* Matsumura (紅胸黑翅螢), Yellow-thorax black-winged firefly, *Luciola hydrophila* (黃胸黑翅螢), and the yellow-rimmed firefly, *Aquatica ficta* (黃綠螢), and the Gaint black tail firefly, *Luciola anceyi* Olivier (大端黑螢). Their larval growth occurs in three environments: aquatic, terrestrial, and semi-aquatic.

To determine if a spot is a good habitat for fireflies, check for large numbers of snails or earthworms by bushes or crystal-clear waters. Firefly larvae feed on these small invertebrates. The adults feed on dew and nectar.

Fireflies are most active in spring and autumn on the evenings of sunny days. The best viewing time is 18:30~20:30. Poor viewing is experienced if the moon is full, if there is light pollution from streetlights, and on days of heavy rain. After attaining adulthood, fireflies live for about two weeks, and their fluorescence is related to courtship and mating. The males fly about locating females perched on grass or in trees. They do not like bright lights, and the city has deliberately left certain firefly-viewing locations without streetlighting, so be sure to bring a flashlight, and cover the light with red cellophane so it won't disturb them.

Whether in the hilly outskirts, or in a city park, the roar and hubbub of this busy city fades away at night and fireflies come out to play amidst the pretty, quiet landscapes. The visitor, like all other witnesses to this

special event, which is repeated each night, is transfixed by its primordial charm. 🦋

5. The luminous Black-winged Firefly collects in large numbers, and likes to move about in groups, creating a splendid glowing show at night.
6. The Hushan trail system is a great place for firefly spotting.
7. Professor Yang Pingshi, who took part in the Hushan Stream habitat conservation project, guides people to firefly-habitat locations.

(Photo courtesy of Yang Pingshi, Wu Chiahsiung, He Jianrong)

Taipei Firefly-Viewing Spots

Sishou Mountain Trail 四獸山步道

Venues: Hushanxi Trail (虎山溪步道), Hushan Hiking Trail (虎山親山步道)

Yangmingshan 陽明山

Venues: Tianxiyuan (天溪園), Zhuzihu (竹子湖), Datun Nature Park (大屯自然公園), Butterfly Garden (千蝶谷生態農場)

Fuyang Eco Park 富陽自然生態公園

Add: Ln. 272, Wolong St. (臥龍街272巷)

Taipei Neigouxi Ecological Exhibition Hall 內溝溪生態展示館

Add: Near 236-3, Kangle St. (康樂街236之3號)

Guizikeng Water and Soil Conservation Education Park 貴子坑水土保持教學園區

Add: 161, Xiushan Rd. (秀山路161號)

Xianjiyan Hiking Trail 仙跡岩親山步道

Add: Ln. 304, Sec. 3, Xinglong Rd. (興隆路3段304巷)

Rongxing Park 榮星花園公園

Add: 1, Sec. 3, Minquan E. Rd. (民權東路3段1號)





Celebrate the Dragon Boat Festival with Creative Zongzi

During the Dragon Boat Festival, which falls on the 5th day of the 5th lunar month, the Chinese celebrate by holding dragon boat races and eating zongzi (粽子 glutinous rice with different fillings, wrapped in bamboo leaves). As a city of fine cuisine, many businesses in Taipei offer various kinds of zongzi; in addition to the traditional southern boiled zongzi, northern steamed zongzi, and sweet zongzi containing bean paste, this year stores will present innovative new flavors of zongzi to satisfy the desire of Taipei's citizens for new and delicious tastes.

Foreign Ingredients Used to Make Creative Zongzi

When zongzi are influenced by international cuisine, what culinary sparks fly? The head chef of The Sherwood

Taipei (台北西華飯店) is serving guests Boletus and Abalone Zongzi (牛肝菌鮑魚粽) with a uniquely French taste, using South African abalone and Boletus as the filling, together with salted egg yolk, king oyster mushrooms, chestnuts, red shallots, purple onions, and fatty pork gravy. There is also the Lily Buds Lava Black Rice Zongzi (百合流沙紫米粽), which combines healthy ingredients such as lily buds, lotus seeds, coconut milk, green bean paste, dried longan, Chinese wolfberry, black rice, and glutinous rice. The coconut milk and green bean paste give this zongzi a Southeast Asian flavor.

Wendel's German Bakery & Bistro (溫德德式烘焙餐館), which specializes in German bread, has also stepped into the ring, with Sausage & Sauerkraut Zongzi (德包粽) and Mushroom & Onion Zongzi (德包蘑菇粽); the former contains German sausage and sauerkraut, while the latter is filled with mushrooms and onions; the taste of glutinous rice and leaves, together with fiber-rich and high-grain bread, allow customers to eat zongzi with a distinctly German taste, for a quite different Dragon Boat Festival experience!

Creative Zongzi Made with Sweet and Savory Ingredients

Shangri-La's Far Eastern Plaza Hotel, Taipei (香格里拉台北遠東國際大飯店) amazes by finding inspiration for its zongzi in several famous Chinese dishes. Traditional Cantonese Rice Dumplings (廣式裹蒸粽) contain scallops from Hokkaido, cherry wood smoked duck breast, marbled pork, honey roast ham, mushrooms, lotus seeds,





5



6



7

dried shrimps, salted egg yolk, and green bean; large zongzi with generous portions of ingredients are enough for four or five people.

Many kinds of fruit and other unique ingredients have been selected for the filling of dessert zongzi by Howard Plaza Hotel Taipei (台北福華大飯店). For example, the Lychee Zongzi (冰晶玉荷包粽), with a skin of lychee paste and rose water, and filled with pineapple and almond, is deliciously sweet and sour. Taro and Azuki Bean Zongzi (相思芋頭粽) are wrapped in a skin made of red bean, rich yet not sickly, which embraces a spongy taro filling with a fresh taste. In addition, Brown Sugar and Macadamia Zongzi (沖繩黑糖脆果粽) have a skin made of brown sugar from Okinawa, accompanied by a filling blending green bean paste and macadamia nuts, for a mouth-watering concoction.

2014 Taipei Dragon Boat Festival

As well as sampling creative zongzi, enjoy Dragon Boat Festival by heading out to Dajia Riverside Park (大佳河濱公園) to take part in the 2014 Taipei Dragon Boat Festival (水岸臺北2014端午嘉年華), and watch as teams from Taiwan and beyond engage in fiercely competitive dragon boat races. You can also participate in many interesting experiences, such as a zongzi-wrapping competition, painting eggs, and an egg dropping competition. Beyond this, the occasion also features culture-based creative products, fine cuisine and snacks, and family recreational facilities, allowing participants to share in a joyous dragon boat festival

8 together with their families. 🍵



1. The Taro and Azuki Bean Zongzi is wrapped in a shell of red bean which embraces a taro filling. (Picture courtesy of the Howard Plaza Hotel Taipei)
2. The Mushroom & Onion Zongzi has a hearty European style filling, and has a fresh new style that combines bread and zongzi. (Picture courtesy of Wendel's German Bakery & Bistro)
3. The Lily Bud Lava Black Rice Zongzi is a Southeast Asian style zongzi. (Picture courtesy of The Sherwood Taipei)
4. The Boletus and Abalone Zongzi has a French taste. (Picture courtesy of The Sherwood Taipei)
5. The Traditional Cantonese Rice Dumpling is a large zongzi made with generous portions of ingredients. (Picture courtesy of Shangri-La's Far Eastern Plaza Hotel, Taipei)
6. The Lychee Zongzi is deliciously sweet and sour. (Picture courtesy of the Howard Plaza Hotel Taipei)
- 7-8. At the 2014 Taipei Dragon Boat Festival, as well as watching international dragon boat teams race, you can also take part in a zongzi wrapping contest.

Information

The Sherwood Taipei 台北西華飯店

Tel: (02)2718-1188

Wendel's German Bakery & Bistro

溫德德式烘焙餐館

Tel: (02)2831-4592

Shangri-la's Far Eastern Plaza Hotel, Taipei

香格里拉台北遠東國際大飯店

Tel: (02)2378-8888

Howard Plaza Hotel Taipei 台北福華大飯店

Tel: (02)2700-2323

2014 Taipei Dragon Boat Festival

水岸臺北2014端午嘉年華

Time: 5/31~6/2

Venue: Dajia Riverside Park (大佳河濱公園)

Tel: (02)2570-2330, ext. 149

Website: 2014dragonboat.utaipei.edu.tw

King Liu – Bicycle Missionary



King Liu

- Chairman, Giant Manufacturing Co. Ltd.
- Senior Advisors, Office of the President of the Republic of China
- Chairman, Cycling Life-Style Foundation

1. Taipei Mayor Hau Lungbin (first on left) and King Liu (second on left) at a YouBike promotion, working together to make Taipei a city of bicycles.
2. There is 24-hour monitoring at YouBike stations to ensure each has enough bikes available, with adjustments made accordingly.
3. Liu has spent over half his life in the world of bicycles, and at 73 made his dream of a self-travel round-island bike jaunt come true.
4. Now 80, Liu plans to tackle the round-island challenge again – in 12 days – calling it his “thanksgiving trip.”

(Pictures courtesy of Giant MFG. Co., Ltd.)

Map in hand, standing astride a YouBike, a tourist from America asks someone on the street how to get to a destination. Wherever you go in Taipei, you will see bikes of the same distinctive color, taking riders on adventures through the city's grid of lanes and alleys. The bright-orange YouBike has become a familiar addition to the cityscape, and King Liu (劉金標), founder of Giant Bicycles (捷安特自行車), has been a driving force in making it all happen.

Around the world, about 600 cities have public bike systems. However, when looking to build its own system, Taipei found that none provided a fully satisfactory model. In order to realize his dream of making Taiwan an island of bicycles, Liu, who has spent his adult life running a bike-manufacturing enterprise and promoting cycling as a form of healthy exercise, joined forces with the Taipei City Government to promote the public-bike system. Chuckling, Liu says, “From selecting members to form an ad hoc group tasked with developing YouBike to the logo design, bike-body styling, and development of the rental procedure and support services, I was personally involved in the planning every step of the way. That's not something you usually see from a company chairman.”



Liu frequently inspects other cities' public bike-rental systems when overseas. He says, "The concept for the set-up of facilities may look good on paper, but the key lies in whether they can satisfy users' needs in practice." Unlike Barcelona's system, for example, which is restricted to holders of a local residence permit, everyone can use YouBike services. In addition, unlike New York's Citi Bike system, which requires a high annual fee, the EasyCard can be used in the Taipei system for quick and easy rentals, and the first 30 minutes for each bike rental is free. Liu continues, "We use the best body frames and parts for YouBike bicycles. There is no lowering of standards just because they are for public use. We also have 24-hour monitoring to ensure each station has enough bikes available, and make adjustments accordingly. Maintenance personnel also regularly check each bike's tires, brakes, seat cushions, etc. Our goal is service-quality perfection."

Bike enthusiasts who have taken independent bicycle trips abroad will agree that it is inconvenient to ship your own bike to another country and to handle all related preparations and supplies. Liu still loves cycling,

and at 73 he headed out on a 15-day bike trip that took him all around Taiwan. He has a deep understanding of bikers' needs and has set up a specialty travel agency that helps overseas visitors to Taiwan arrange customized bike tours. The traveler simply needs to show up with lightweight luggage for a fully equipped tour. The agency offers a wide range of bike models and accessories, and itineraries and supplies are fitted to customers' needs and preferences, ensuring that travelers can ramble around the island without a care.

Liu, who founded Giant 43 years ago, has dedicated over half his life to bicycles, and in his senior years finally realized his dream of cycling around the island. It has given him new self-understanding, and this May, his 80th, he plans to tackle the round-island challenge again – in 12 days – calling it his "thanksgiving trip". In the past, he thought of himself as a solitary cycling missionary; today the legions of YouBike users confirm the attraction of cycling. Taipei has become one of the world's most successful public bike-use models – something Liu considers among the most meaningful accomplishments of his life. 🚲

Jennifer Jao: Taipei Can Provide the Best Environment for Shooting Foreign Movies



Jennifer Jao

- Director of the Taipei Film Commission
- Deputy general secretary to the Asia Pacific Film Festival Executive Committee
- Trustee of the Motion Picture Foundation, R.O.C.
- Member of the Taiwan Film & Culture Association

1-2. Jennifer Jao assisted Ang Lee with location scouting at Taipei Zoo for his film *Life of Pi*.

3. French director Luc Besson (right) came to Taipei to shoot *Lucy*, and attended a press conference held by Taipei City Mayor Hau Lungbin with producer Virginie Silla (left).

4. Taipei Film Commission hosted the 2012 Taipei International Forum of Visual Effects and Animation.

(Pictures courtesy of the Taipei Film Commission)



(Note : Dangerous action, only do with expert supervision.)

The Oscar-winning director Ang Lee (李安) shot *Life of Pi* (少年Pi的奇幻漂流) in Taiwan, and after it took off around the world, it made foreign audiences understand advances in Taiwanese film production technology and attracted several foreign directors to Taiwan to shoot movies.

In October 2013, the French director Luc Besson shot *Lucy* (露西) in Taiwan with Scarlett Johansson, who played the leading role. Soon after, part of *The Crossing* (太平輪) by Hong Kong director John Woo (吳宇森) was shot on Yangmingshan; afterwards, the great director Martin Scorsese came to Taipei to scout locations for his new film, *Silence* (沉默).

Since foreign film production teams are coming to Taiwan to scout locations, Taipei City Government established the Taipei Film Commission (台北市電影委員會) in 2009. In addition to ensuring fast, convenient service, the Commission also cultivates Taipei film talent, with the intention of strengthening Taipei City's movie production environment. Director Jennifer Jao (饒紫娟) joined the Central Motion Picture Corporation, or CMPC, in 1995, now Central Pictures Corporation, when domestic box office sales were declining even as Taiwanese films such as *The Wedding Banquet* (囍宴), *Eat Drink Man Woman* (飲食男女), and *Vive L'Amour* (愛情萬歲) won major awards such as Best Film in international contests. In order to



reduce costs, many of the Commission's employees did much of the work themselves, because of which Jao learned about the whole process of film production, including how to assemble trailers, publicity, and buy and sell movies.

This experience taught Jao a great deal about filmmaking. She has been deputy general secretary to the Asia Pacific Film Festival Executive Committee, a trustee of the Motion Picture Foundation, R.O.C., and was a member of the Taiwan Film & Culture Association. She was subsequently given the important task by the city government of developing Taipei's movie talent. Ang Lee and Jao were previously colleagues at the CMPC studio, and when Lee came to Taipei Zoo to choose a tiger to feature in *Life of Pi*, this was accomplished with the unstinting assistance of Jao and her colleagues.

After the success of *Life of Pi*, every month the Commission received from six to eight inquiries about shooting movies in Taiwan from foreign film production teams. Regarding this success she says, "I'm extremely grateful to Ang Lee; the success of *Life of Pi* has been very good international publicity for Taiwan." Furthermore,

before Luc Besson came to Taipei to location-scout for *Lucy*, he had taken many cities in Southeast Asia into consideration, but finally chose to shoot in Taipei primarily as a result of the many services provided by the Commission, such as free assistance in location-scouting, catering and accommodation discounts, and transportation arrangement. Jao says, "After the director has stated their conditions and requirements for scenes, we will certainly do all we can to provide more and better advice and options, which surprises many foreign film production units."

The Commission has recently enacted a new policy of "Film integrated service." the Commission is involved in everything: from holding script-writing contests, to raising funds, and finding directors and filming crews, as well as domestic and international marketing. Jao says, "With respect to foreign people coming to Taiwan to shoot, as long as requirements are met we also provide a high level of subsidy and marketing assistance."

Jao believes that Taipei is a city abundantly endowed with charm, and the colorful, rich scenes of movies are the best intermediary for introducing foreigners to Taipei. 📍

Timothy Berge – Reporting in English on All Aspects of Taipei, Big and Small



Timothy Berge

- Place of Origin: Minnesota, United States
- Occupation: ICRT General Manager

ICRT, International Community Radio Taipei, has been a part of Taipei life and friend to the city's residents for more than 30 years. A rare gem, it is Taiwan's only English language broadcaster, and has nurtured many DJs from around the world. For many years Timothy Berge, a fluent Chinese speaker, appeared regularly to give bilingual traffic reports – and was so fluent in Mandarin that many listeners thought he was Taiwanese.

Tim first came to Taiwan for a visit as a college student in 1978. He had grown up listening to stories of a neighbor, a missionary, about how good a place Taiwan was, and had always wanted to come see for himself. He returned after graduating from university and at first was involved with international trade, but then learned that ICRT was looking for bilingual announcers, submitted his application, and was hired. He has gone from traffic reporter to ICRT general manager. In what seems like the blink of an eye, he says, he has lived in Taipei for 20 years.

"A while after starting," he says, "I became a news announcer, which requires a calmer, steadier voice to sound more professional, and also required the rapid translation of Chinese-language news into English. Every time I went on air I was nervous." He remembers many times where he ended up tongue-tied, described as "eating screws" (吃螺絲) in Chinese. A warm and friendly fellow, his "broadcaster" character does not change when he is away from work; he is always reporting the latest news to all his friends. "You know the place on Daan Road called the Red Room?" he says. "You should know that lot of foreign residents gather there once a month for a poetry-reading session. And you should also know that there's a troupe made up of foreigners called the Taipei Players that have also been performing shows over the years"

In his early years in Taipei, Tim did as countless other people in Taipei do, using a motorcycle to get around. In those days the ICRT station was up on Yangmingshan, and when he had to make his way up or down the mountain during peak traffic times, the backups were often dreadful. Today, thankfully, the Taipei Metro has become an intrinsic element in Taipei life, and has made things much easier for the city's car and motorcycle-scooter drivers.

What he likes best of all about Taipei is its incredible range of great foods in all price categories. Whatever you desire, from upscale cuisine to inexpensive meals to snacks, great taste and full satisfaction are guaranteed. "What I enjoy most is snacking down along the lanes and alleys," he says, "Liao's Beef Noodles (廖家牛肉麵) on Jinhua Street (金華街) is a great example. The broth is clear and fresh, and the beef is deliciously tender. Another is the zesty hot and sour combination at Xiao Shen Ji Sichuan Flavor (小沈記川味), which is unforgettable."

With a deep affection for all that is Taipei, Timothy has set down deep roots, buying a house in Beitou and declaring this his "second hometown." 🏡



1



2

1. Timothy recommends the Red Room, where foreign residents gather in number each month for poetry readings.
2. Timothy loves snacking that Liao's Beef Noodles is a great example.

How to Talk to TAIPEI

Here are a few sentences in Mandarin Chinese and Taiwanese that backpackers can use while in Taipei to ensure smooth sailing.

Excuse me, can you tell me how to get to the nearest YouBike station?

Mandarin Chinese

請問離這裡最近的 YouBike 站怎麼走？
Qǐngwèn lí zhèlǐ zuìjìn de YouBike zhàn zěnmě zǒu?

Excuse me, can you tell me if there is a bicycle repair shop close by?

Mandarin Chinese

請問這附近有修腳踏車的店嗎？
Qǐngwèn zhè fùjìn yǒu xiū jiǎotàchē de diàn ma?

Please have some tea.

Taiwanese

請用茶。
Qiā Yòng diē

Excuse me, can you tell me what kind of tea this is?

Mandarin Chinese

請問這是什麼茶？
Qǐngwèn zhè shì shénme chá?

Can I have a sample taste of the Tieguanyin tea?

Taiwanese

可以試飲鐵觀音茶嗎？
Gān éi dāng Cì lǐn Tī guān yīn ?

Excuse me, can you tell me where I can rent a bicycle?

Taiwanese

請問哪裡可以租腳踏車？
Qiā mèn dōu wēi éi dāng zhōu kā dà chā?



Gear up! The 2014 Young Designers' Exhibition

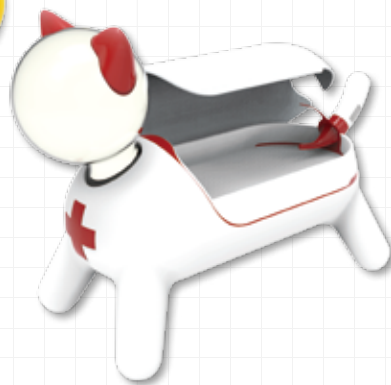
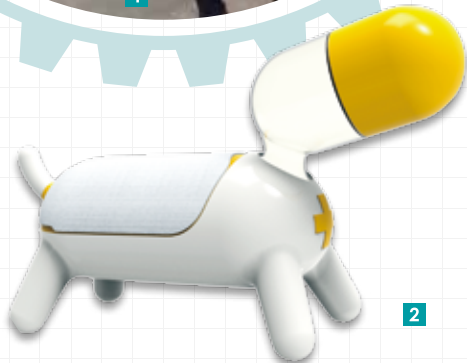
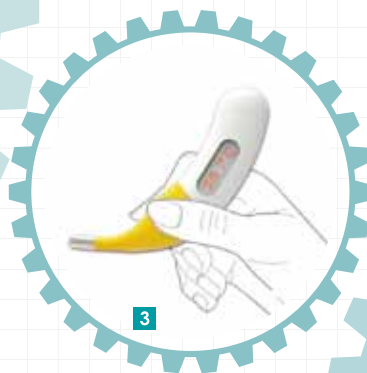
Ever since the Young Designers' Exhibition (新一代設計展), or YODEX, was first held in 1982, it has gradually changed from a joint graduation show held by a number of industrial design departments, to the world's largest joint design exhibition for new talent. A contest of creativity and design featuring Taiwanese and international students joining hands to broaden the world's horizons, it was chosen as part of The International Council of Societies of Industrial Design's 50th anniversary series in 2007, alongside such renowned design activities as the Salone Internazionale del Mobile in Milan and the Norwegian Design Day.

Bringing Creativity and Practice Closer

The theme of this year's exhibition is "Gear up! (預備! 起!)". A phrase that represents the fact that the next generation of designers is preparing to set off and face future challenges. The works of the cutting-edge designer Yu Minxiang have been selected, and a new generation of designers is marching on, bringing with them boundless creativity and dynamism.

A total of 131 departments from 61 schools will participate in this year's competition. In addition to showcasing the creative achievements of Taiwanese design schools, famous international design schools have been invited to put on a brilliant graduation exhibition, encompassing the areas of product design, graphic design, visual communication design, spatial design and landscape architecture, popular fashion and accoutrement.

Chen Wenlong, the newly-appointed CEO of the Taiwan Design Center, says that this year's YODEX also aims to strengthen cooperation between schools and industry; a group of renowned Taiwanese design enterprises have





been specially invited to propose a subject for next year's graduates, and provide assistance in the areas of knowledge and practical technique. Eventually, a selection process will be used to provide enterprise with innovative, practical design achievements.

A New Generation of Designers Display Their Ideas

Over 9,000 students will attend this year's YODEX, and over 4,000 pieces will be gathered under one roof. Renowned Taiwanese design schools will compete, with works such as the cute Chansey, by Huang Shihting (黃詩婷) of the National Taipei University of Technology's Undergraduate Program of Creative Design (國立臺北科技大學創意設計學士班), which is a medical equipment box for animals shaped like a cat and a dog which contain a space in which medical products can be placed. It was designed with reference to the structure of pets' bodies. For example, the tail thermometer is made of soft silicon and is relatively short, ensuring that it is safe when it is inside the animal's body and can be conveniently inserted into its anus to measure body

1. YODEX showcases the creative achievements of Taiwanese design schools, and many famous international design schools have also been invited to show brilliant graduation works.
- 2-4. The cute *Chansey* by Huang Shihting of National Taipei University of Technology, is a medical equipment box for animals shaped like a cat and a dog.
- 5-6. *Bad habit/Why not shake*, an artwork by Lin Shungneng and Lee Zhengyi from the Department of Industrial Design at Tatung University, changes a chair into a kind of musical instrument.
7. *RECO*, a work designed by Luo Weili, Huang Bosong and Tsai Xinyu of Shih Chien University's Department of Industrial Design.

temperature. The compact design is easy to understand and convenient to use.

Lin Shungneng (林暄能) and Lee Zhengyi (李政毅) from the Department of Industrial Design of Tatung University (大同大學工業設計學系) uses the *Bad habit/Why not shake* (壞習慣) as a reflection on shaking one's leg, which is normally considered a bad habit, joining it together with the rhythmic tapping of the feet used by jazz drummers, changing a chair into a kind of musical instrument and making shaking one's foot a performance method. When people sit on this high chair, they could become musicians, performing their own "foot-tapping music."

Aside from this, *RECO*, designed by Luo Weili (羅偉力), Huang Bosong (黃柏菘) and Tsai Xinyu (蔡欣宇) of the Shih Chien University Department of Industrial Design (實踐大學工業產品設計學系) is a must-see work recommended by the department, which fuses the Chinese characters for "ride," "eco-friendly," "craft," and "ocean," producing a more environmentally-friendly and comfortable method of transport, better suited to sea tourism than the jet skis currently used.



8



10



9

The Changing of the Guard: Designing Taipei

In addition, there will also be a characterful exhibition at the venue – results films from the 2014 SCU International Design Workshop (2014跨系所國際設計工作營), held by the College of Design, Shih Chien University, will be shown. The school invited the internationally-renowned Japanese clothing designer Dai Fujiwara to undertake an international workshop plan spanning three years, starting in 2012; the achievements were exhibited in Japan at the 21_21 DESIGN SIGHT gallery. This year's workshop achievements will make an appearance at YODEX.

This year, Dai Fujiwara has proposed the cultural characteristics of 10 stations of Taipei's MRT as subjects, allowing students to use the urban images of Taipei as a starting point for their inspiration. One of the exhibits, *Let Taipei 101 become the starting point of your travel* applies the new mobile device application technology, an augmented reality apps guide system, which senses surrounding scenic points through global positioning, making Taipei 101 the point of departure for a journey around Taipei. Standing in the Taipei


101 Observatory, aim a cellphone at a point outside the window, and the surrounding scenery will appear in animated form, while related information will also appear, adding interest to a visit.

Flowing Maokong, meanwhile, has absorbed three local elements, the movement of tourists, the monsoon season, and the flower season, designing a shaped flower umbrella which has an alternative beauty. When tourists come to any of the stations on the Maokong Gondola (貓空纜車) line, they can buy a flower umbrella available in limited quantities during a given season. When passengers in the cable car look down from above on people with these umbrellas roaming on the trails of Maokong, the umbrellas will look like flowers blossoming amidst the greenery. Another student has designed egg-shaped blocks of instant noodles named *Tamago*. When held in chopsticks and placed into hot water, they will recall the memories many Beitou locals have of boiling eggs in Thermal Valley (地熱谷).

Yet another student was also inspired by the octagonal structure of The Red House (西門紅樓) and designed an ice cube tray in the form of octagonal tiles; The Red House tea filter also allows tourists to recall the antique atmosphere of this area. The pictorial content of



the *SUPER BAG* comes from the most representative sights of the Shilin Night Market (士林觀光夜市), such as Shilin Cixian Temple (士林慈誠宮), snacks, vendors' signs, and crowds, the shopping bag is unique to Shilin and attracts the countless young people who visit night markets.

The rich, substantial fruits of Taiwanese design education blossom brilliantly on the stage provided by YODEX, and the designs of the young, brimming with observational power and creativity, can be seen and discovered here. Friends from Taiwan and beyond are welcome to come and experience the design energy of Taiwan's new generation of designers. 

- 8. Shih Chien University's Department of Industrial Design invited the internationally-renowned Japanese clothing designer Dai Fujiwara (first left) to host the 2014 SCU International Design Workshop.
- 9. *Let Taipei 101 become the Starting point of your Travel* was inspired by Taipei 101.
- 10. *Flowing Maokong* is inspired by local elements.
- 11. *Tamago* is inspired by the memories of Beitou locals of boiling eggs in Thermal Valley.
- 12. The *SUPER BAG* draws on scenes from Shilin Night Market.
- 13-14. The *Red House Ice Cube Tray* and the *Red House Tea Infuser* designs are inspired by the octagonal Red House Theater building.

Information

2014 Young Designers' Exhibition (YODEX)
2014新一代設計展YODEX

Time: 5/16~5/19

Venue: TWTC Exhibition Hall 1; 5, Sec. 5, Xinyi Rd.
(世貿一館; 信義路5段5號;)
TWTC Exhibition Hall 3; 6, Songshou Rd.
(世貿三館; 松壽路6號)

Websites: yodex.boco.com.tw



1



2



More Than Meets the Eye – The Enigma of M.C. Escher: Prints From the Israel Museum, Jerusalem

Look again, closer! Looking carefully at the canvas, something about the painting just does not seem right. You see geese flying in the sky, but why is it that when you look again from another angle all you see is open field? Moreover, what is it about the stairs in the building you are looking at that seems so odd? Will the people inside ever be able to get out? Do not always assume that what your eyes are telling you is the truth – artist M.C. Escher is a master manipulator of the world of perception, and in the world of illusion he creates you cannot trust your sense of vision.

A Dutchman, Maurits Cornelis Escher (1892-1972) was and is one of the world's most famous print artists. Boldly breaking through the limitations of the self, his works are puzzles of mathematical logic, visual illusion, and psychological perspective, enigmatic images combining the playful and the scientific. They even came to be used in testing and research by psychologists. His stunning prints feature extensive use of distinctive black and white contrast and precise lines, in an unprecedented graphic-art style. Each is an interpretation of a complex fantasy with a morphing structure that seems to subvert the laws of nature. His

works often transfix the viewer, who stares intently, trying to grasp their secrets and whimsy.

Escher was one of the esoteric greats of 20th century art, his unique aesthetics and style impossible to categorize. He plumbed the world of science for inspiration. This exhibition has been one of the most successful of its kind around the globe in recent years; in 2011 in Rio de Janeiro a startling attendance record of 9,700 visitors on average per day was set –the highest in the world for that year. All works being shown are from Jerusalem's the Israel Museum, and were originally donated to the museum by New York collector Charles Kramer and his family. The show is rich in style and diverse in theme, a grand gathering of graphic paintings and all sorts of interactive artworks, and a rare interdisciplinary art-exhibit treat.

This is the first time Escher's classic works are being exhibited in Taiwan. There are 152 works in total, including prints, drawings, printmaking plates, and a spherical sculpture. There are six themed sections, exploring the full range of his creativity: Scientific Explorations, The Human Figure, Techniques and Their Secrets, Legend and Religion, Landscapes, and Optical Illusions.



3



4



5



6

The visual riddle of each Escher work inevitably draws the viewer in, deeper and deeper. After mulling things over comes dawning understanding of the artist's implicit critique of human nature and society. His experimentation with visual imagery also reveals his exploration of scientific principles.

One work that Escher particularly liked is *Print Gallery* (1956), a rendering of a local townscape in Malta. Look very closely and you will see that he is engaged in a con game: the young man on the left who is enjoying a painting is at the same time standing in the very scene he is looking at! This is a trick that Escher frequently used, stuffing repeated duplications of a figure into a scene, giving a convex or concave character to a flat surface and giving a more pronounced effect to a figure. He would also blur the boundaries between figures and background, creating a visual effect of unlimited extension.

This exhibition traces the complete outline of Escher's artistic career, and is a great opportunity to experience the magic of this master of illusion. After viewing his creations, you are sure to feel you have just been on a visual journey like no other. 🎨

1. Escher's famed work *Day and Night* challenges the viewer's visual-recognition capabilities by blending day and night and creating a seamless unity of flying geese and patchwork fields.
2. In *Print Gallery* Escher uses a loop arrangement and spherical projection technique to create the illusion of infinity.
3. A material rendering of the print *Ascending and Descending* is on display at the exhibition.
4. This exhibition traces the complete outline of Escher's artistic career, and is a great opportunity to explore the magic of this master of illusion and his many themes.
5. In *Print Gallery* the artist uses perspective intersection to create a tunnel of infinity effect, simultaneously presenting four different spaces in a single plane.
6. In *Sky and Water* white fish and black birds intersect on a single plane, making it impossible for the viewer to identify both at once.

(All M. C. Escher works © the M. C. Escher Company B.V. - Baarn - the Netherlands. Used by permission. All rights reserved. www.mcescher.com)

Information

The Enigma of M.C. Escher: Prints From the Israel Museum, Jerusalem
錯覺藝術大師——艾雪的魔幻世界畫展

Time: Until 6/2; daily 09:00~17:00

Venue: National Palace Museum Exhibition Area II, 1F, Library Building; 221, Sec. 3, Zhishan Rd. (國立故宮博物院展覽區二圖書文獻大樓1樓; 至善路3段221號)

Tel: (02)6630-8388

Website: www.mediasphere.com.tw/escher-tw

Taipei Film Festival 2014



1. The main visual design of the 2014 TFF.

2. Sylvia Chang (second left), the Chairperson of the Taipei Film Festival, photographed together with the finalists in the 2013 International New Talent Competition, a competition held for a decade that has discovered quite a few new talented directors.

5

The Taipei Film Festival (台北電影節), which has already become an annual summer film event and continues to explore cinematic novelty, is to be held for the 16th time this year. There's also a new curating team, which is led by a new director, Jeane Huang (黃鴻端), who is familiar with the international artistic world, and a new curator who has been active in film circles for many years, Ming-Jung Kuo (郭敏容). Jeane Huang took up her important role as a result of the invitation of Sylvia Chang (張艾嘉), the Chairperson of the Taipei Film Festival. She believes that the Taipei Film Festival has already laid an extremely good foundation, using contests and films as a platform for exchange. She will continue to build the brand image of the Taipei Film Festival and strengthen the links between art and culture and urban tourism, drawing Taipei to the attention of more international figures.

The International New Talent Competition (國際青年導演競賽) and Taipei Film Awards (台北電影獎) are the two major contests of the Taipei Film Festival. International and Taiwanese filmmakers contend to register for the International New Talent Competition. Kuo says that

over the last few years, many directors have introduced Taipei's virtues to their friends after participating in the Taipei Film Festival, attracting attention from more and more international film figures. Now entering its 10th year, this year's theme is 10 Years of Achievement (十年有成). The contest will look back on the startling works directors have entered in the competition over the last 10 years, such as *They Came Back*, the first feature-length film by Robin Campillo, who won the Venice Horizons Award at the Venice Film Festival in 2013 with *Eastern Boys*.

A theme city is chosen for the Taipei Film Festival every year to give the audience a chance to review films made about that city. This year's theme city is Warsaw in Poland, and many of the Polish master animator Piotr Dumala's famous animated films will be screened. Dumala has been nominated for Best Short Feature at the Cannes Film Festival, and his creative trajectory has gradually switched from black-and-white to color film. His work is characterized by strong contrast between light and shadow, which creates fantastic imagery. *Franz Kafka*, about the life of Kafka



4



6



7



8

3-4. Campillo won the Venice Horizons Award at the Venice Film Festival in 2013 with *Eastern Boys*, a film that will be shown at the TFF this year.

5. British star Emily Blunt (first on right) first appeared on the silver screen in *My Summer of Love*.

6. The TFF curating team is led jointly by a new Director, Jeane Huang (left) and Curator Ming-Jung Kuo (right).

7. *Nénette*, an animal documentary with a unique viewpoint, observes the various faces of humans through the eyes of an old chimpanzee.

8. John Travolta's breakout film, *Grease*, a film highly popular with young people when it was released, has been chosen for the Different Love, Different Lives section.

(The pictures courtesy of Taipei Film Festival)

– which is on the list of Annecy International Animated Film Festival's 100 Films for a Century of Animation – and *Crime and Punishment*, a retelling of Dostoyevsky's novel, will be featured in Taipei Film Festival.

Aside from this, new theme units including Captive: Watching Animals Watching Us (人與動物之間) and Different Love, Different Lives (全民歡夏) have been planned specially to attract people of different ages. Many films, such as classics that have endured beyond their own eras and new films have been selected as a means to deepen film education. John Travolta's breakout film, *Grease*, and British star Emily Blunt's first appearance on the silver screen, *My Summer of Love*, have been chosen for the Different Love, Different Lives unit. Meanwhile, films from all over the world whose subject is animals, such as the French film *Nénette*, which gazes on humanity through the eyes of a chimpanzee in a zoo, have been chosen for Captive: Watching Animals Watching Us, in response to the centenary of Taipei Zoo.

The Taipei Film Festival aims to become an important cultural event in Taipei, as renowned as the Berlin International Film Festival in Germany and the Festival d'Avignon in France. 📍

Information

Taipei Film Festival 2014 2014台北電影節

Time: 6/27~7/19

Venues: Taipei Zhongshan Hall (臺北市中山堂),
Taipei Shin Kong Cineplex (臺北新光影城),
SPOT Huashan Cinema (光點華山電影館)

Tel: (02)2528-9511

Website: www.taipeiff.org.tw

Ticket information:

City film ticket package: set of 10 tickets NT\$1699 each.

Available from: 5/31 13:00 to 6/26 24:00.
Seats can be booked from 6/7 13:00 onwards

Ticket prices: Adult NT\$200 each
(on sale from 6/14 13:00)

Ticket Sales: exclusively at 7-ELEVEN ibon nationwide

Children's Art Education Center Celebrates Its Opening by Giving Children a "Gift"



As spring begins once again, Taipei has a new place just for kids and families! The Taipei Fine Arts Museum (臺北市立美術館), or TFAM, officially established the Children's Art Education Center (兒童藝術教育中心) in April, and has chosen "The Gift" (禮物) as the subject of the Center's first exhibition, launching a series of exhibitions and related activities to mark the official opening.



The Center is Taipei's first official space dedicated to kids' art education, and has symbolic significance as the largest fine art teaching plan the TFAM has ever established. The theme of the special opening exhibition, *The Gift*, plays on the dual meaning of the English word "gift," which means both a present and a natural talent, to convey the ideas of acceptance and transmission, displaying the empathy and blessing between individuals. The organizer says, "Gifts also represent the talent and inspiration the artist receives from Heaven, transmitting concepts and opinions through creation; the viewer, meanwhile, accepts joy and inspiration from works of art, being moved and gaining experience."

The *Gift* opening exhibition is composed of four main parts: *My Precious Gift*, *Gift Wrapping*, *Time Cheque*, and *In the Name of a Gift*. The *My Precious Gift* section will display 81 individual gifts gathered for the public opening. The owners will share their stories and the significance of their gifts, as well as the moving memories behind them.

Gift Wrapping is an all-new creation of the Flying-group Theater (飛人集社劇團), using a huge old suitcase

to symbolize the travelers' rich, varied life; It's full to the brim with all kinds of precious, unforgettable memories, which represent different stages of life.

Time Cheque allows visitors to change time (life) into a physical time cheque given to other people through an interactive installation. The recipient can cash the check in on the work's official website. The creator, Wang Aili (王艾莉), uses this to convey the creative concept of giving part of your life to another person, which is a kind of "true present," given without requiring anything in return.

For *In the Name of a Gift*, eight contemporary Taiwanese artists, including Zou Junsheng (鄒駿昇) and Chen Chiehjen (陳界仁) and Yuan Goangming (袁廣鳴), were invited to convey the concept of artistic creation as a kind of present and talent which must be constantly exchanged and shared, an artistic capacity and influence which can be accumulated.

Additionally, the organizer has also established an interactive zone dedicated to reading and creation in the Center, called the *Wonderland of Gifts* (奇想禮物盒). This allows families who visit the exhibition to have



an imaginative space in which to stop and spend time interacting with their family by reading, painting, talking, and sharing time with them.

The spirit conveyed by the idea of a "gift" is warm and moving, and the establishment of the Center can be said to be a gift given to the citizens of Taipei City by the TFAM and the TSMC Education and Culture Foundation (台積電文教基金會). By providing all kinds of themed artistic exhibition and diverse artistic educational activities, the inspiration of freedom and creativity is emphasized. Adults and children are welcome to the Taipei Fine Arts Museum to explore and experience this rich and moving journey of art. 🎨

1. The My Precious Gift area will display 81 individual gifts collected from the public. For the owners, each gift has its own story and memory.
2. Gift Wrapping uses a huge old suitcase to symbolize the rich, varied life of a traveler, representing different stages of life.
3. The Time Cheque area's interactive installations allow visitors to change time (life) into a physical time check that can be given to people.
- 4-5. The Children's Art Education Center is Taipei's first space dedicated to kids' art education established by the city government.
6. For In the Name of a Gift, eight contemporary Taiwanese artists took turns to create; the picture shows a work by illustrator Tsou Junsheng.

7. The Wonderland of Gifts interactive area allows families to interact by reading or creating, spending some quality family time together.

8. The Children's Art Education Center has a workshop for children aged 7-12 years old in which they can create together.

Information

Children's Art Education Center Opening Exhibition – "The Gift" 兒藝中心開幕展《禮物》

Time: Until 9/14

Tues-Sun 09:30-17:30, Sat extended hours to 20:30

Venue: Taipei Fine Arts Museum; 181, Sec.2, Zhongshan N. Rd. (臺北市立美術館; 中山北路2段181號)

Tel: (02)2595-7656

Website: www.tfam.museum



K-P.O.P. – Korean Contemporary Art



Program X-site: Landscape of the Boundary



"Treasures of Kazan" – the Beitou Museum
30th Anniversary Special Exhibit



*Samadhi Tang – The faces of the gods

National Palace Museum

Tel: (02)2881-2021
Add: 221, Sec. 2, Zhishan Rd. (至善路 2 段 221 號)
Website: www.npm.gov.tw
Until 5/19
In Their Footsteps: a Special Exhibition of Images and Documents on Indigenous Peoples in Taiwan
Until 6/30
Four Great Masters of the Ming Dynasty – Wen Zhengming
Until 9/30
Decorated Porcelains of Dingzhou – White Ding wares from the collection of the National Palace Museum

Museum of Contemporary Art, Taipei (MOCA Taipei)

Tel: (02)2552-3721
Add: 39, Chang'an W. Rd. (長安西路 39 號)
Website: www.mocatapei.org.tw
Until 6/15
K-P.O.P. – Korean Contemporary Art
Until 11/30
Written in Soap: A Plinth Project

National Theater & Concert Hall

Tel: (02)3393-9888
Add: 21-1, Zhongshan S. Rd. (中山南路 21-1 號)
Website: www.ntch.edu.tw
5/20~5/24
《Shadowland》 by Pilobolus
5/26~6/1
The 8th TAIWAN INTERNATIONAL PERCUSSION CONVENTION
6/20~6/29
Perfect Fantasy – MRT, The Musical

National Chiang Kai-shek Memorial Hall

Tel: (02)2343-1100
Add: 21, Zhongshan S. Rd. (中山南路 21 號)
Website: www.cksmh.gov.tw
5/30~6/9
Eternal Friendship Exhibition
5/31~6/20
Taiwan 100 Artists union exhibition of calligraphy and paintings
Until 10/27
The Hall Cross Century

Songshan Cultural and Creative Park

Tel: (02)2765-1388
Add: 133, Guangfu S. Rd. (光復南路 133 號)
Website: www.songshanculturalpark.org
Until 6/2
2014 The Grad Expo in Songshan
6/13~6/29
Leather Forever Exhibition

Taipei Fine Arts Museum

Tel: (02)2595-7656
Add: 181, Sec. 3, Zhongshan N. Rd. (中山北路 3 段 181 號)
Website: www.tfam.museum
Until 5/18
Program X-site: Landscape of the Boundary
Until 6/8
View-Point: A Retrospective of Li Yuan-chia

Huashan 1914 Creative Park

Tel: (02)2358-1914
Add: 1, Sec. 1, Bade Rd. (八德路 1 段 1 號)
Website: web.huashan1914.com
Until 5/20
2014 Talent Show
Until 12/31
365 Art Project

National Taiwan Museum

Tel: (02)2382-2566
Add: 2, Xiangyang Rd. (襄陽路 2 號)
Website: www.ntm.gov.tw
Until 6/22
The Exhibition of Islamic Life and Culture
Until 8/31
The Magic of Plants

National Taiwan Science Education Center

Tel: (02)6610-1234
Add: 189, Shishang Rd. (士商路 189 號)
Website: www.ntsec.gov.tw
Until 8/31
Revealing The Hidden Code Of Insects Exhibition

Taipei Expo Park

Tel: (02)2182-8886
Add: 1 Yumen St. (玉門街 1 號)
Website: www.taipei-expopark.tw
5/22~5/27
S14 Art Solo

Taipei Story House

Tel: (02)2587-5565, ext. 106
Add: 181-1, Sec. 3, Zhongshan N. Rd. (中山北路 3 段 181-1 號)
Website: www.storyhouse.com.tw
Until 6/29
"The Story of Fortune Telling" Exhibition

Beitou Museum

Tel: (02)2891-2318
Add: 32, Youya Rd. (幽雅路 32 號)
Website: www.beitoumuseum.org.tw
Until 8/31
"Treasures of Kazan" – the Beitou Museum 30th Anniversary Special Exhibit

Puppetry Art Center of Taipei

Tel: (02)2528-9553
Add: 2F, 99, Sec. 5, Civic Blvd. (市民大道 5 段 99 號 2 樓)
Website: www.pact.org.tw
Until 6/22
Samadhi Tang – The faces of the gods

National Dr. Sun Yat-sen Memorial Hall

Tel: (02)2758-8008
Add: 505, Sec.4, Ren'ai Rd. (仁愛路 4 段 505 號)
Website: www.yatsen.gov.tw
Until 5/25
Taiwan Sculptors Group Exhibition
Until 5/29
The Beauty of the National Dr. Sun Yat-sen Memorial Hall – The 42nd Anniversary Exhibition of the National Dr. Sun Yat-sen Memorial Hall

Travel Information

How to Get from Taiwan Taoyuan International Airport to Taipei

For traveling between Taipei and Taiwan Taoyuan International Airport, whether by inexpensive, high-quality shuttle, safe and fast taxi, or high-grade professional airport limo service, you're spoiled for choice in satisfying your particular time and budget.



■ Taxi

Service locations:

North of the Arrivals hall of Terminal I and South of the Arrivals hall of Terminal II

One-way fare:

meter count plus 15%, with freeway tolls extra; average fare to Taipei around NT\$1,100.

Terminal I Arrivals hall taxi-service counter Tel:

(03) 398-2832

Terminal II Arrivals hall taxi-service counter Tel:

(03) 398-3599

■ Passenger Shuttle Bus

Service locations:

Southwest of the Arrivals hall of Terminal I (exterior vehicle pickup corridor) and Northeast of the Arrivals hall of Terminal II (exterior vehicle pickup corridor)

Shuttle-service companies:

Kuo-Kuang Motor Transportation, Evergreen Bus, Free Go Express, Citi Air Bus

One-way fare: NT\$85-145




Travel time:

40-60 minutes depending on routes (60-90 minutes for Citi Air Bus, which has more stops)

Schedule: Every 15-20 minutes

Metro Taipei

Service Hours: 06:00-24:00 24-Hour Customer Service Hotline: (02)218-12345

Ticket	Price
One-way Trip 	NT\$20-NT\$65
Day Pass 	NT\$150
EasyCard 	Initial purchase: NT\$500 (incl. NT\$400 applicable to transit fares). The card provides discounts on transit fares and can also be used for small purchases at convenience stores and other designated shops.

Ticket	Price
Taipei Pass 	The Taipei Pass is activated upon first use on bus or metro ticket readers and valid for unlimited use till expiration. The Taipei Pass can be purchased at all Metro stations, and is used on the Taipei Metro and on Taipei and New Taipei City public buses (with Taipei Pass stickers showing). One-day pass: NT\$180 Two-day pass: NT\$310 Three-day pass: NT\$440 Five-day pass: NT\$700 Maokong Gondola One-day pass: NT\$250

NOTICE

In order to facilitate inquiries by the public, the city government has set up the 1999 Taipei Citizen Hotline. Whether by telephone, cell phone, or Voice over IP (payphone excluded), dial 1999 for free access. There is a time limit, with service personnel restricted to 10-minute service availability, and a 10-minute limit on call transfers. Citizens are asked to make the most efficient use of this resource, making all calls as brief as possible.

For more information, call 1999 or visit www.rdec.taipei.gov.tw

TAIWAN EMERGENCY TELEPHONE NUMBERS

Police / 110

Crimes, traffic accidents, and other incidents for which police assistance is needed

Fire and Emergency / 119

Fire, injury or accident, or other urgent matters for which emergency relief is needed

Women and Children Protection Hotline / 113 ext. 0

24-hour emergency, legal information, and psychological services for victims of domestic violence and/or sexual abuse.

NON-EMERGENCY TELEPHONE NUMBERS

Unit	Tel. No.
Taipei City Govt. Citizen Hotline	1999 (02-2720-8889 outside Taipei city)
English Directory Service	106
IDD Telephone Service Hotline	0800-080-100 ext.9
Time-of-Day Service	117
Weather Service	166
Traffic Reports	168
Tourism Bureau (MOTC) 24-Hour Toll-Free Travel Information Hotline	0800-011-765
Tourism Bureau (MOTC) Toll-Free Traveler Complaints Hotline	0800-211-734
International Community Service Hotline	0800-024-111
Tourism Bureau Information Counter, Taiwan Taoyuan International Airport	Terminal 1: (03)398-2194 Terminal 2: (03)398-3341
Bureau of Foreign Trade	(02)2351-0271
Taiwan External Trade Development Council (TAITRA)	(02)2725-5200
Taiwan Visitors Association	(02)2594-3261
The Japanese Chamber of Commerce & Industry, Taipei	(02)2522-2163
Ministry of Foreign Affairs	(02)2348-2999
Ministry of Foreign Affairs Citizens Hotline	(02)2380-5678
Police Broadcasting Station	(02)2388-8099
English Hotline for Taxi Service	0800-055-850 ext.2
Consumer Service Center Hotline	1950
Bureau of National Health Insurance Information Hotline	0800-030-598
AIDS Information Hotline	0800-888-995

Source for Above Information:

Information For Foreigners Service / Tel: 0800-024-111
 Tourism Bureau, Ministry of Transportation and Communications
 Tel: (02) 2349-1500

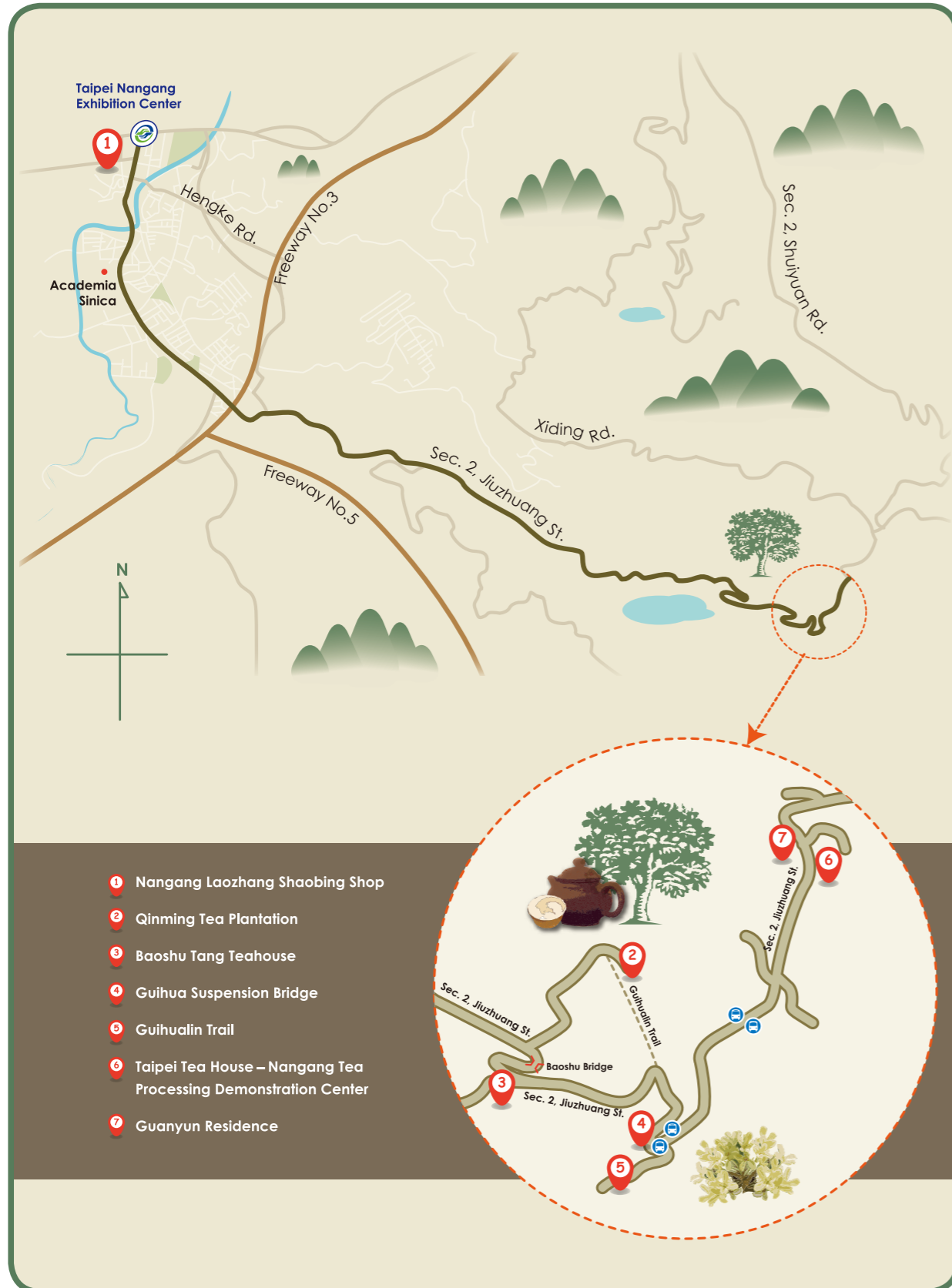
※ Entries in green indicate service in English provided

LIST OF TAIPEI VISITOR INFORMATION CENTERS

Taipei Main Station (02)2312-3256 1F, 3, Beiping W. Rd.	MRT Jiantan Station (02)2883-0313 65, Sec. 5, Zhongshan N. Rd.	Miramar Entertainment Park Visitor Center (02)8501-2762 20, Jingye 3 rd Rd.
Songshan Airport (02)2546-4741 340-10, Dunhua N. Rd.	MRT Beitou Station (02)2894-6923 1, Guangming Rd.	Maokong Gondola Taipei Zoo Station (02)8661-7627 2, Ln. 10, Sec. 2, Xinguang Rd. (1F, Maokong Gondola Service Center)
East Metro Mall (02)6638-0059 4-2, 77, Sec.1, Da'an Rd. (Underground Mall)	MRT Taipei 101/World Trade Center Station (02)2758-6593 B1, 20, Sec. 5, Xinyi Rd.	Maokong Gondola Maokong Station (02)2937-8563 35, Ln. 38, Sec. 3, Zhinan Rd. (Exit area, Maokong Station)
MRT Ximen Station (02)2375-3096 B1, 32-1, Baoqing Rd.	Taipei City Hall Bus Station (02)2723-6836 6, Sec. 5, Zhongxiao E. Rd.	
MRT Yuanshan Station (02)2591-6130 9-1, Jiuquan St.	Plum Garden Visitor Center (02)2897-2647 6, Zhongshan Rd.	



A Trip to Jiuzhuang Tea Mountain – Exploring Local Tea Culture (P38~P41) Map



A Trip to Jiuzhuang Tea Mountain – Exploring Local Tea Culture (P38~P41) Tour Information



A Trip to Jiuzhuang Tea Mountain – Exploring Local Tea Culture

Nangang Laozhang Shaobing Shop
南港老張燒餅店
Add: 602, Sec. 7, Zhongxiao E. Rd.
(忠孝東路7段602號)
Tel: (02)2783-5591

Qinming Tea Plantation
欽明茶園
Add: 318-2, Sec. 2, Jiuzhuang St.
(舊莊街2段318-2號)
Tel: (02)2782-2264

Baoshu Tang Teahouse
寶樹堂茶園
Add: 334, Sec. 2, Jiuzhuang St.
(舊莊街2段334號)
Tel: (02)2783-5790

Taipei Tea House – Nangang Tea Processing Demonstration Center
台北找茶園——南港茶葉製造示範場
Add: 336, Sec. 2, Jiuzhuang St.
(舊莊街2段336號)
Tel: (02)2653-0333

Guanyun Residence 觀雲居
Add: 324, Sec. 2, Jiuzhuang St.
(舊莊街2段324號)
Tel: (02)2651-2161



Transportation Information

Nangang Laozhang Shaobing Shop

Take Taipei Metro to Nangang Exhibition Center Station, take Exit 5 → walk straight along Sec. 1, Academia Rd. (approx. 5 minutes) → turn right onto Sec. 7, Zhongxiao E. Rd., walk along left side → Nangang Laozhang Shaobing Shop located at no. 602

Qinming Tea Plantation

Walk back along Sec. 7 Zhongxiao E. Rd. to Academia Rd. → Walk on right to bus stop by Funan Temple → Take Small No. 5 Bus (no set stops along route, hop on/hop off service) → bus ride approx. 30 minutes → get off after seeing Baoshu Bridge → walk 10 minutes to Qinming Tea Plantation

Guihua Suspension Bridge Trail / Guihualin Trail/ Baoshu Tang Teahouse

Qinming Tea Plantation → walk ahead approx. 3 minutes →

Guihualin Trail entrance → cross Guihua Suspension Bridge → walk along Guihualin Trail → exit Guihualin Trail → walk towards Tianjin Tea Garden → Baoshu Tang Teahouse

Taipei Tea House – Nangang Tea Processing Demonstration Center / Guanyun Residence

Leave Baoshu Tang Teahouse → walk to entrance of Guihualin Trail opposite → enter trail, walk in uphill direction approx. 20 minutes → Taipei Tea House – Nangang Tea Processing Demonstration Center located at end of trail → walk to side opposite Taipei Tea House – Nangang Tea Processing Demonstration Center → Guanyun Residence

