

88 發·現·臺·北
DISCOVER TAIPEI



MAR. / APR. BIMONTHLY 2012



Backpacker's Delight

Traveling Light in Taipei

Backpackers, Ahoy!

Explore Taipei City this spring with Taipei Pass!

The Art of Seal Carving – Beauty in a Small Square

**Down Shady Lanes – A Leisurely Tour
of the Minsheng Community and Fujin Street Area**

Springtime Flower – Art Rambles





MAR. / APR.
BIMONTHLY 2012

DISCOVER TAIPEI is Available at

臺北市府觀光傳播局

Department of Information and Tourism,
Taipei City Government
1999 ext.7564
4F, 1, Shifu Rd., Taipei

臺灣桃園國際航空站一

Tourist Service Center at Arrival Lobby,
Taiwan Taoyuan International Airport
(03) 398-2194
Dayuan, Taoyuan County

臺灣桃園國際航空站二

Tourist Service Center at Arrival Lobby,
Taiwan Taoyuan International Airport
(03) 398-3341
Dayuan, Taoyuan County

美國在臺協會

American Institute in Taiwan
(02) 2162-2000
7, Lane 134, Sec. 3, Xinyi Rd., Taipei

遠企購物中心

Taipei Metro the Mall
(02) 2378-6666 ext.6580
203, Sec. 2, Dunhua S. Rd., Taipei

國語日報語文中心

Mandarin Daily News (Language Center)
(02) 2341-8821
2, Fuzhou St., Taipei

臺北市立美術館

Taipei Fine Arts Museum
(02) 2595-7656
181, Sec. 3, Zhongshan N. Rd., Taipei

聖多福天主教堂

St. Christopher Catholic Church
(02) 2594-7914
51, Sec. 3, Zhongshan N. Rd., Taipei

士林區公所

Shilin District Office
(02) 2882-6200 ext.8725
8F, 439, Zhongzheng Rd., Taipei

臺北士林劍潭活動中心

Shilin Chientan Overseas Youth Activity Center
(02) 2885-2151
16, Sec. 4, Zhongshan N. Rd., Taipei

南港軟體工業園區

Nangang Software Park
(02) 2655-3093 ext.124
2F, 19-10, Sanchong Rd., Taipei

臺北美國學校

Taipei American School
(02) 2873-9900
800, Sec. 6, Zhongshan N. Rd., Taipei

中正紀念堂

National Chiang Kai-shek Memorial Hall
(02) 2343-1100
21, Zhongshan S. Rd., Taipei

臺北當代藝術館

Museum of Contemporary Art Taipei
(02) 2552-3720
39, Chang'an W. Rd., Taipei

官邸藝文沙龍

Mayor's Residence Arts Salon
(02) 2396-9398
46, Shuijoui Rd., Taipei

臺北國際藝術村

Taipei Artist Village
(02) 3393-7377
7, Beiping E. Rd., Taipei

臺北二二八紀念館

Taipei 228 Memorial Museum
(02) 2389-7228
3, Ketagalan Boulevard, Taipei

交通部觀光局旅遊服務中心

Travel Service Center, Tourism Bureau,
M.O.I.C
(02) 2717-3737
240, Dunhua N. Rd., Taipei

西門紅樓

The Red House
(02) 2311-9380
10, Chengdu Rd., Taipei

光點臺北

SPOT-Taipei Film House
(02) 2778-2991
18, Sec. 2, Zhongshan N. Rd., Taipei

臺北市政府市民服務組

The public service group of Taipei City
Government
(02) 2720-8889 / 1999 ext.1000
1, Shifu Rd., Taipei

北投溫泉博物館

Beitou Hot Springs Museum
(02) 2893-9981
2, Zhongshan Rd., Taipei

士林官邸

Chiang Kai-shek Shilin Residence
(02) 2883-6340
60, Fulin Rd., Taipei

臺北市孔廟

Taipei Confucius Temple
(02) 2592-3924
275, Dalong St., Taipei

撫臺街洋樓

Futai Street Mansion
(02) 2314-5190
26, Yanping S. Rd., Taipei

松山文化創意園區

Songshan Cultural and Creative Park
(02) 2765-1388
133, Guangfu S. Rd., Taipei

華山 1914 文化創意產業園區

Huashan 1914 Creative Park
(02) 2358-1914
1, Sec.1, Bade Rd., Taipei

臺北故事館

Taipei Story House
(02) 2587-5565
181-1, Sec. 3, Zhongshan N. Rd., Taipei

臺灣博物館

National Taiwan Museum
(02) 2382-2566
2, Xiangyang Rd., Taipei

12 座臺北市旅遊服務中心

12 Visitor Information Centers in Taipei
(see more detail on P. 65)

捷運沿線各站

All Stations of MRT Lines

伊是咖啡

Is Coffee

摩斯漢堡

Mos Burger

亞典圖書公司

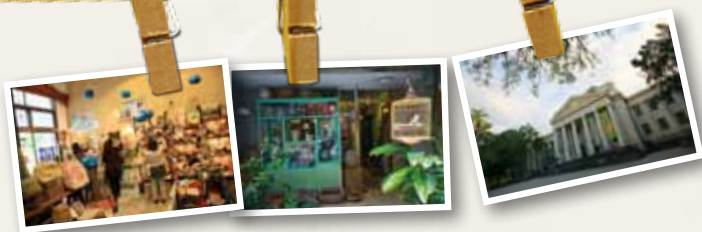
Art Land Book Co. Ltd.
(02) 2784-5166
122, Sec. 3, Ren'ai Rd., Taipei

誠品書店各分店

eslite Bookstores

金石堂書店

Kingstone Bookstores



EDITOR'S INTRODUCTION

Backpacker's Delight — Traveling Light in Taipei

Throw off that heavy winter clothing, and throw on that super-light backpack. The spring has come, the sun is shining, and it's time to throw yourself into the wide world of Taiwan fun and adventure.


Our theme this issue: “Backpacker's Delight—Traveling Light in Taipei” Our mission: to tell you all about our convenient transportation system, our inexpensive, internationally certified youth hostels, and the myriad scenic attractions that surround them. These hostels are warm, inviting, homey places where you'll meet like-minded travelers from all around the world, and can share tales of adventure and create cherished memories.

In our Taipei New Images section we let you know all about a number of the city's new tourist attractions: Shilin Market, Grass Mountain Chateau, and the now-open second floor of the main building of Chiang Kai-shek Shilin Residence. There's also good news for bicycle enthusiasts, for Taipei's bicycle-path loop network has at last been completed with the opening of the “Taipei City Bicycle Loop Network.” The grand loop stretches 58.8 km, and brings you past a splendid line-up of scenic and cultural spots.

There's great beauty in the scenery one finds along a river-and-mountain bike path—and there's a beauty just as profound in the well-wrought Chinese character. In our In-Depth City Culture Explorations gallery we immerse you in the art of seal carving, revealing its origins, the meaning behind its fonts, and how you can learn to carve your own characters.

In our Mapping the Taipei Lifestyle department we give you a blueprint for city springtime rendezvous that wraps you up in nature's gifts. The theme is “green” in our article on the Minsheng Community / Fujin Street area, a community of lush shady streets and of chic creative boutiques, and is “pastel” in our report on the city's spring flower season, with excursions up Yangmingshan, to Zhuzihu (Bamboo Lake), and to Taipei Expo Park.

This city is a warm and friendly incubator of impressively diverse design and artistic ferment, and in this issue we go on a spree of visits, witnessing the bold design innovation at the new Taiwan Excellence Pavilion and the Design Atelier & Jewellery Design Center and taking in exhibitions of such widely differing character as Art Revolution Taipei 2012, Wonderland: New Contemporary Art from Australia, and the Headspring Festival. Enter into this realm and you enter into a world of boundless vision.

Taipei in spring. A time perfect for light travel and a time for enjoying beautiful flowers and scenery, visiting exhibitions, and exploring the lanes and alleys of fascinating new neighborhoods. In Taipei an abundance of interesting and surprising places await, and around every corner a new sight and a fresh smile. 



Contents

Discover Taipei

Taipei City Government

All rights reserved. Reproduction in any form without written permission is prohibited.

Publisher / Hsinping Chao

Editor In Chief / Angel Chen

Deputy Editor in chief / Iyen Wang

Editors / Emily Wang

Greg Kuo

Integrated Marketing / Yenhsin Lee

Wenyi Tzeng

Translator / Rick Charette

Artwork Designer & Production

WestBank Advertising Co., Ltd.

Tel: (02) 2723-3516

Fax: (02) 2722-4967

Photographer: Vincent Wang,

William Lin

Department of Information and Tourism, Taipei City Government

Add: 4F, 1, Shifu Rd., Taipei, Taiwan,
R.O.C.

Tel: 1999 (outside Taipei City, dial
(02) 2720-8889) ext. 2029, 7564

Fax: (02) 2720-5909

Email: qa-emilywang@mail.taipei.gov.tw

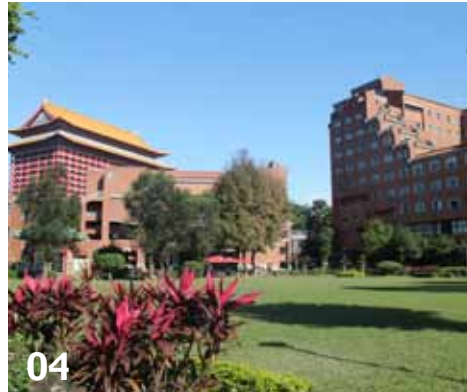
ISSN: 17281741

GPN: 2008600233

中華郵政台北雜字

第 1376 號執照登記為雜誌交寄

Hope you enjoy reading this issue of DTB.
If you have any suggestions, please do
not hesitate to email or fax us.



04



14

04 / Taipei Focus

04 Backpackers, Ahoy!

Explore Taipei City this Spring with Taipei Pass!

06 Taipei's Best Backpacker Hostels

12 / Taipei New Images

**12 Welcome to the All New, Improved, Shilin
Market**

**14 The Veil Lifted Anew – Grass Mountain
Chateau, Chiang Kai-shek's First Taiwan Villa**

**16 The Generalissimo's World
Main Building at Chiang Kai-shek Shilin
Residence Now Fully Open**

**17 Ride the Winds, See Taipei!
The Bicycle Loop Network is Now Fully Open**

18 / In-Depth City Culture Explorations

**18 The Art of Seal Carving –
Beauty in a Small Square**



18

28



26



36



54

22 / Taipei's Best Foods & Gifts

- 22 Put a Spring in Your Step!
Healthy Light Meals in Taipei
- 26 The Perfect Springtime Snack – *Runbing*
- 28 Taipei Offers a Wondrous Range of Gift Ideas, at Your Fingertips

32 / Mapping the Taipei Lifestyle

- 32 Down Shady Lanes
A Leisurely Tour of the Minsheng Community and Fujin Street Area
- 36 Springtime Flower – Art Rambles
- 40 The 2012 Tianmu Water Trail Festival –
A Celebration of Community and Mother Nature's Gifts
- 42 Table Tennis in Taipei, Anyone?

44 / Taipei Folk, In Their Own Words

- 44 Taipei's Lanes and Alleys –
Oases of Traditional Culture
- 46 Taipei in the Eyes of Foreign Friends
- 50 A Day in Tremendous Taipei:
The City that has Everything!
- 51 How to Talk to Taipei

52 / The Taipei Quest – World Design Capital

- 52 New Bricks & Mortar Foundations for
Taipei Fashion
- 54 Taiwan Excellence Pavillion:
Showcasing the Best of Taiwan in
Taipei City

56 / What's New in Taipei Arts

- 56 Greek Gods Live Again –
Western Mythology and Legends:
Selected Works from the Louvre
Museum
- 58 Dialogue between Nature and High-Tech
Wonderland: New Contemporary Art
from Australia
- 60 The Headspring Festival –
Fantasy within a Giant Magic Tent
- 61 Art on a Monumental Scale –
Art Revolution Taipei 2012

62 / Taipei Events Guide

- 62 March – April Arts Exhibition Calendar
- 65 Airport Transportation, Taipei Visitor
Information Centers, Maps, and Other
Practical Information

Backpackers, Ahoy! Explore Taipei City this Spring with Taipei Pass!



Spring is the perfect season for traveling, and with convenient transportation, a wonderful mix of the nostalgic old and the ultra-new, warm and pleasant weather, and even warmer people, Taipei is a great place to explore. Backpackers can find no better place to roam, where both simple charms and chic sophistication wait around each corner.

The city's convenient, comfortable, user-friendly MRT and bus systems make planning travel itineraries easy, and zipping around and beyond the city is straightforward even for non Chinese speakers. In November last year Fox News included Taipei on its list of Top Budget Travel Destinations for 2012, as a result of its unique and unbeatable package of “emerging culinary scene, snazzy new construction, lush hot springs, and majestic mountains,” and its range of quality accommodations available at a reasonable price. Backpackers and other budget travelers, take note – Taipei is the perfect destination for budget travelers.

Making things even easier for visitors is the Taipei Pass (臺北觀光護照), available at all major MRT stations. The card, available in Chinese, English, and Japanese versions, allows unrestricted travel for a set period of time on the MRT and public-bus systems. A joint initiative by the city's Department of Information and Tourism and the EasyCard Corporation, the card comes with a Taipei Pass Guide (臺北觀光護照手冊) that contains discounts at 110 local businesses, from restaurants to scenic sites, hotels to gift shops, and other attractions.



With a Taipei Pass tourist passport in hand, the city's vibrant culture opens up, with the Taipei Metro especially opening up every city nook and cranny, high street and local neighborhood.

Take the Taipei Metro's Bannan Line to the east sector's Xinyi Planning District (信義計畫區), Taipei's most fashionable, modern, and cosmopolitan area. The streetscapes are broad and unfettered here, the streets themselves spic-and-span. This area has the country's densest concentration of department stores, with such big names as Shin Kong Mitsukoshi (新光三越) and the Taipei 101 Mall, and a many ultra-modern large-scale retail outlets, notably the Eslite Xinyi Bookstore (誠品信義書店) and ATT 4 FUN, the last a combined department store, recreation, and exhibit/display center. Xinyi is also renowned for its ever-expanding collection of big and bold architectural statements, and literally sparkles and glows at night, many of the buildings becoming painter's works expressed in neon. The area is also home to the brand-new Songshan Cultural and Creative Park (松山文創園區), an incubator and showcase for Taiwan's cultural-creative industry, an impressive collection of public artworks created by masters from around the globe, and the intriguing and always fun Discovery Center of Taipei (台北探索館) inside Taipei City Hall, a great place to learn all about the city you've come to explore.

On the city's west side is the Dadaocheng (大稻埕) community, accessed via the MRT Tamsui line, where you can savor Taipei's tea culture, which goes back to imperial times, and when the season comes dive into the Taipei Lunar New Year Festival (臺北年貨大街). Take the MRT Bannan Line west to Wanhua (萬華) to enjoy the grace and style of old-time Taipei, and explore nearby Ximending (西門町), the consumer Mecca for Taipei's youth. In the south visit the city's "tea country," Maokong (貓空), savoring the plantations, rustic teahouses, and hilltop views. Maokong is easily reached via the MRT Wenhu Line and the scenic Maokong Gondola.

In the north, along the MRT Tamsui Line, the grand collection of imagination and skill at the Taipei Fine Arts Museum (臺北市立美術館) awaits, as do countless snacking treats at Shilin Market (士林市場). Healthy mineral spring baths await in Beitou (北投) at the end of the MRT Xinbeitou Line. Beitou, a world-

class hot-spring resort area and home to a priceless collection of historic sites, enjoys the coveted three-star "Highly Recommended" rating in the Michelin Green Guide Taiwan.

All spots that have been mentioned here are also serviced by numerous city-bus routes, and deals aplenty are available at local businesses via the Taipei Pass Guide. With spring comes the urge to get out and explore, which in Taipei is now even easier thanks to the Taipei Pass. How light and easy can "light travel" be? With Taipei Pass in hand, you'll find out. 🌟

1. Taipei has a convenient and comfortable metro and public-bus system, making zooming about the city a breeze for travelers.
2. Beitou is an international-caliber hot-spring resort area.
3. When night falls, the wonderful architecture in the chic and trendy Xinyi District comes alive with decorative lighting that dazzles.
4. A Maokong Gondola ride delivers you to great tea fragrances and the unique local tea culture.



Taipei Pass

1. One-day pass NT\$180, two-day pass NT\$310, three-day pass NT\$440, five-day pass NT\$700, one-day Maokong Gondola pass NT\$250.
2. Each pass, within its set time limit, enables unrestricted use of the MRT system and the public bus systems in Taipei City and New Taipei City; the Maokong Gondola pass allows unrestricted use of the gondola and of the aforementioned transformation systems.
3. A complimentary copy of the Taipei Pass Guide is issued with each Taipei Pass. The guide, which comes in Chinese, English, and Japanese editions, contains preferential offers with savings valued at NT\$23,000. The number of guides is limited, and they are sold on a first come, first serve basis.

Taipei Pass Travel Information

Tel: 1999 (dial 02-2720-8889 if outside Taipei City), ext. 3336

Website (TaipeiTravel.net): www.taipeitruavel.net

Selling Spots: All information counters of Taipei Metro stations or Taipei Main Station EasyCard Customer Service Center.



Taipei's Best Backpacker Hostels

The city of Taipei's comprehensive, inexpensive, and easy-to-navigate public transportation system provides a headache-free way for backpackers to get around the big city. A bigger challenge is finding accommodation that is both inexpensive and convenient, and many travelers chose to arrange this aspect of their trip before leaving home.

Taipei city's range of travel lodgings is very wide, from five-star tourist hotels and business hotels to youth hostels, and to ensure that the travelers experience is one of maximum safety and comfort the city's Department of Information and Tourism directs a campaign in which the local accommodation industry constantly seeks ways to maximize "Safety, Tranquility, Peace of Mind" (安全、安靜、安心). The result has been a comprehensive improvement of the city's

overall tourist-service quality. As of the end of 2011, 166 enterprises had passed the quality-assessment criterion, 116 had been assisted in installing updated fire-protection facilities, and 13 now enjoy Google Map identification and feature in mobile-phone navigation apps.

Many local places to stay are members of the respected Hostelling International (HI) network organized by the Taiwan Youth Hostel Association (社團法人中華民國國際青年之家協會), and have been given Youth Hostel (YH) recognition, a guarantee of international-caliber quality; we introduce three locations below.

1



Flying the “YH” Flag

The Youth Hostel movement was launched in 1909 by Mr. Richard Schirrmann, an eminent German elementary-school teacher, and the first permanent Youth Hostel was opened in 1912 in Altena Castle, Germany. Schirrmann's goal was to establish a system that budget-conscious youth could rely on, encouraging group travel to learn about other peoples and cultures. Hostelling International was established in 1932 in order to encourage the opening of a greater number of safe and comfortable YH facilities, and today it is the world's largest accommodation network, with over 90 member countries and 4,800 affiliated YH locations under its umbrella, providing friendly and inviting services. At the moment more than 30 Taiwan hostels carry YH accreditation, with eight in Taipei.

Hostels and homestays seeking YH accreditation must first submit a formal application. HI thereafter conducts an appraisal, focusing on such areas as legal status, location, price, safety, comfort, and quality of the local environment. Trained personnel are dispatched to conduct on-site visits, provide guidance on HI operational philosophy and management practices, and check to see that these are incorporated and adhered to. Operators must also attend training courses. Once all HI standards are firmly in place, YH accreditation is granted, and international travelers can rest assured they are staying in a venue of the highest quality.

All travelers can apply for the YH Card – there is no age limit – which brings preferential rates at YH facilities and special discounts at over 10,000 different attractions and services around the world. Each YH facility offers moderate, fair-value pricing, international quality, and shared rooms, providing travel-loving backpackers and budget travelers in general solid value for their money, a place to stay with no surprises, hassles, or worries, and the chance to meet like-minded adventurers from the world's four corners. Travelers are thus able to concentrate on the joys of travel rather than be consumed with the practical necessities.

Let's look at three of the most popular Taipei Youth Hostels, together with a glimpse of the scenic attractions and cultural life found in the areas surrounding each.



Refreshing Pastel Orange- White Pizzazz – CityInn Hotel I

The CityInn Hotel I (新驛旅店)—very much a youth hostel despite the name—is located in the heart of the city just five minutes by foot from Taipei Main Station. This is a busy area filled with the vitality and electricity that drives Taipei life. The hostel is especially popular with backpackers from South Korea, Japan, and Southeast Asia. The interior is chic, both brightly colored and well lit, with the warm and polite front-desk staff attired in neat and attractive uniforms. The hostel offers a self-service laundry, self-help cafeteria, and other public facilities, and each room has walls featuring attractive illustrations. All the classic YH elements are here: moderate pricing, convenience and comfort, and modernity.

1. With the YH Card you enjoy preferential room rates and other cost-saving deals.
2. Hostelling International enables young folk from around the world to spend time living together and learning about each other's homelands.
3. HI accreditation gives hostels an international-quality guarantee and gives backpackers peace of mind.
- 4-5. Each room in the CityInn Hotel I youth hostel has walls featuring different illustrations, and the hostel offers a self-service laundry, self-help cafeteria, and other facilities.



6



7

9

8

CityInn I is in the midst of the culture—and history-rich Chengzhong District (城中區); “Chengzhong” means “inner city,” a reference to the old walled city; the walls are long gone but almost all the gates survive. The hostel is just a few minutes' walk from the wonderfully convenient and comprehensive MRT system, which gives quick access to most of the city's key tourist attractions. Nearby sites accessible on foot virtually brim with nostalgia, notably the many imposing architectural works created during the 1895–1945 Japanese colonial period.

One prime example is the National Taiwan Museum (NTM; 國立臺灣博物館), within 228 Memorial Peace Park (二二八和平紀念公園), which features a resplendent facade in Greek temple style. The irregular series of exhibits staged here focuses on Taiwan-related subjects.

For example, before April 15th you can take in Impressions of Taiwan Railway in 1970s (鐵道印象), which provides a revealing educational journey. Opposite the museum, just outside the park, is the Taiwan Land Bank Exhibition Hall (臺博館土銀展示館), run by the NTM, which is housed in a renovated building that is a National Historical Relic of the Third Class. One of its intriguing permanent exhibits is on Taiwan's ancient

animal inhabitants, with skeletons of dinosaurs and other primordial creatures.

Over on Ren'ai Road (仁愛路), the Museum of Medical Humanities (臺大醫學人文博物館) is housed in a refurbished hospital building almost a century old. The facility, designed in the Renaissance style, today has exhibits primarily focused on the practice of medicine in Taiwan, making a trip one of both classic architecture appreciation and of understanding of Taiwan's medical advances.

Other attractions in the Chengzhong District that serve as portals into the island's modern history are the Astoria café (明星咖啡廳), Chengzhong Market (城中市場), Futai Street Mansion (撫臺街洋樓), and Zhongshan Hall (中山堂). Complementing them are new retail complexes as Shin Kong Mitsukoshi Department Store and the Qsquare (京站廣場) mall complex. Chongqing South Road (重慶南路) is known to all as Book Street, a busy area where old and new are intimately intertwined.

6. The Impressions of Taiwan Railway in 1970s exhibit, now on at the National Taiwan Museum.

7. At the Astoria café, a heritage business, enjoy the signature coffee, pastries, and yummy Russian soft sweets.

8. The Museum of Medical Humanities has exhibits focused on the practice of medicine in Taiwan.

9. CityInn I Hotel's “shop”—the Qsquare mall complex.

10. You'll find inexpensive shoes, bags, and many daily-use items at Chengzhong Market.



10

Pleasant Lane, Comfy Lodgings – Forte Orange Hotel Linsen

Located on Linsen North Road (林森北路), the YH-accredited Forte Orange Hotel Linsen (福泰桔子商旅林森店) is a business hotel run as a hostel. Rooms are spacious, and pricing is by bed. The first floor has a comfortable and inviting reception area, giving guests a warm sense of home.

Linsen North Road has long been a must-visit area for Japanese travelers exploring Taipei, because the neighboring lanes and alleys were designed during the Japanese colonial-era, and the district boasts a plethora of Japanese restaurants. The Forte Orange Hotel takes advantage of this, attracting many Japanese tourists to the youth hostel by cooperating with Japanese travel websites.



11



12



13



14

The MRT Zhongshan Station is just 8~10 minutes away on foot from the hostel.

The station area is known for its many chic and trendy hair salons, cafes, and boutiques. The large Nanjing branch of the Shin Kong Mitsukoshi Department Store chain is the hub of the district, and there is a decidedly arty feel down along the surrounding lanes and alleys. Through the maze of small arteries is the ambiance of low-key cultured sophistication that defines the Zhongshan District (中山區). From this area, travelers can walk all the way to Taipei Main Station via the underground Zhongshan Metro Mall (中山地下街).

This district is also home to the accomplished Museum of Contemporary Art, Taipei (臺北當代藝術館; MOCA Taipei), housed in an impressive heritage building, which is a specially recommended YH Card site. Nearby is the US antebellum-style SPOT – Taipei Film House (光點臺北), long ago the US ambassador's residence. These two facilities present art exhibitions or avant-garde films by inspired talent from Taiwan and around the world. Both also house unconventional, history-rich cafes that are great choices as rest stops on long city walks. Note as well that down the lanes off Linsen North Road are many izakaya, or Japanese pubs, which provide mainly light foods and snacks.

A stay at the Forte Orange Hotel Linsen allows easy access to all of Zhongshan District's many attractions and also immerses the visitor in an environment of Japanese-style refinement, one aspect of the wonderfully diverse culture for which Taipei is so well known.

- 11-12. The Forte Orange Hotel Linsen has spacious rooms and a comfy lobby area, creating a warm, homey feel.
- 13. MOCA Taipei, housed in a heritage structure, exhibits art by both local and international talent.
- 14. The eel rice at Corner (肥前屋) is a traveler favorite.

A Prime Venue for Youthful Learning— Chientan Overseas Youth Activity Center

Taiwan's Youth Activity Center system has the greatest number of YH facilities. Beyond simply providing clean, safe, and inexpensive accommodation, the Youth Activity Center facilities also best satisfy the YH goal of providing young travelers with opportunities for learning and international exchange. The center was originally set up with the specific purpose of education and training, and thus confirms in every way with the YH mission to be “the world's best platform for youth to engage in cultural exchange.”

Located beside Jiantan (劍潭), which literally means “Sword Pool,” a deep, slow-running section of the Keelung River, the Chientan Overseas Youth Activity Center (劍潭海外青年活動中心) youth hostel can accommodate almost 1,000 guests. Among its facilities are a friendship center, a coin laundry, and even a convenience store. YH Card members enjoy pricing per bed.

The center sits within a small green bubble in the middle of the city, surrounded by tall trees, a mountain backdrop, and the river, and has the relaxed air of a student dormitory. Most of the lodgers are teachers and students assembled for training sessions, and the air almost pulsates with the vitality and passion for life of Taiwan's young people.

The center is located within easy walking distance of MRT Jiantan Station. Riding the Tamsui Line south gives easy access to such important tourist sites as Taipei Fine Arts Museum (臺北市立美術館), Dalongdong Bao'an Temple (大龍峒保安宮), and Taipei Confucius Temple (臺北市孔廟). In the opposite direction, many other well-known attractions lie close to the MRT tracks as well, perhaps most notably the Beitou (北投) hot-springs resort area, rich in both history and in soothing, health-enhancing mineral waters.

Closer to Chientan are two of the city's finest green spaces—the Taipei Expo Park (花博公園) and Chiang Kai-shek Shilin Residence (士林官邸). A short bus ride away from the center is the Taipei Martyrs' Shrine (忠烈祠, famed for its changing of the guard ceremony), and the world-famous National Palace Museum, which is currently presenting an exhibition on Western Mythology and Legends: Selected Works from the Louvre Museum (西方神話與傳說—羅浮宮珍藏展). Another easy bus-ride away is Yangmingshan, with its beautiful flowers and fresh farm produce, and in a day-trip it's possible to cross the high mountains to the coast beyond. At night, visit Shilin Market (士林市場) for a taste of classic Taiwan snacks, resting after a long day and invigorating yourself for more exploration the following day.

Beyond the three leading YH venues discussed above, five other Taipei hotels have also been recently granted YH accreditation: Forward Hotel Taipei (台北馥華商旅松江館), Forward Hotel Nangang (台北馥華商旅南港館), Fu Chang Hotel (富樺商務旅店), Hotel B (台北碧瑤飯店), and NewStay Inn (新站旅店).



Where to go – and where to stay? These are important questions for any traveler planning to explore a new place. We hope that with the above information making these important decisions before a visit to Taipei City will be an easier matter. ⑤



15-17. Chientan Overseas Youth Activity Center, sitting within a small green world, has a high-quality student dormitory environment, with such facilities as a friendship center, creating a great platform for the world's youth to make friends and engage in cultural exchange.

18-21. Visit nearby Taipei Expo Park and Taipei Fine Arts Museum to enjoy flowers and art, and ride the interlinked metro/bus network to enjoy Yangmingshan's cherry blossoms and gun-drill shows at the Martyrs' Shrine.

Information

Taiwan Youth Hostel Association

財團法人中華民國國際青年之家協會

Add: Rm 3037, 3F, 3, Beiping W. Rd. (北平西路3號3樓 3037室)

Tel: (02) 2331-1102 / 2331-2655

Website: www.yh.org.tw

Hostelling International 國際青年旅舍聯盟

Website: www.hihostels.com

CityInn Hotel I

新驛旅店 (臺北車站一館)

Add: 7, Huaining St. (懷寧街7號)

Tel: (02) 2314-8008

Website: www.cityinn.com.tw

Forte Orange Hotel Linsen

福泰桔子商旅林森店

Add: 139, Linsen N. Rd. (林森北路139號)

Tel: (02) 2563-2688

Website: www.forte-hotel.net

Chientan Overseas Youth Activity Center

劍潭海外青年活動中心

Add: 16, Sec. 4, Zhongshan N. Rd. (中山北路4段16號)

Tel: (02) 2885-2151

Website: chientan.cyh.org.tw

Forward Hotel Taipei

台北馥華商旅－松江館

Add: 3, Yijiang St. (一江街3號)

Tel: (02) 2511-8896

Website: www.fwhotel.tw

Forward Hotel Nangang

台北馥華商旅－南港館

Add: 23, Sanchong Rd. (三重路23號)

Tel: (02) 6615-6788

Website: www.fwhotel.tw

Fu Chang Hotel 富莊商務旅店

Add: 6, Kangding Rd. (康定路6號)

Tel: (02) 2371-1247

Website: www.fuchanghotel.com.tw

Hotel B 台北碧瑤飯店

Add: 367, Sec. 2, Bade Rd. (八德路2段367號)

Tel: (02) 2781-3121

Website: www.hotelb.com.tw

NewStay Inn 新站旅店

Add: 5F, 72, Sec. 1, Zhongxiao W. Rd.

(忠孝西路1段72號5樓)

Tel: (02) 2370-2888

Website: www.newstayinn.com

For information on other Taipei accommodations, visit the www.taipeitravel.net



Welcome to the All New, Improved, Shilin Market



It might be nigh impossible to imagine today, but a century ago the Keelung River flowed where today's wide Jihe Road (基河路) lies, beside MRT Jiantan Station in Shilin District. The river was then a major transportation highway, and a thriving market—the now famous Shilin Market (士林夜市)—grew up by the riverside, with goods of all sorts gathered from all around the region.

During the Japanese colonial era (1895-1945), the authorities acted with vigor to improve environmental sanitation and stop the spread of infectious diseases. In 1913 a public market facility was built here, and the area's itinerant vendors were brought under one roof. The structure was made of red brick and had a wooden frame, with arched galleries running down either side in

the central area, and a courtyard in the middle. Major reconstruction of the location was launched in 2002, with vendors moved to a nearby temporary facility, where the futuristic Taipei Performing Arts Center (臺北藝術中心) will now go up. The vendors moved “back” into their new digs late last year.

The Shilin Night Market is Taiwan's traditional-style market with the longest opening hours. The use of “night” in the name is in fact incorrect; the market's night-time food vendors quickly became well-known in the old days, and people mistakenly assumed this was a night market. In fact you can find fun and culinary satisfaction here all through the day, from morning until late at night.

The back of the new Shilin Market (士林市場) opens up onto the plaza fronting venerable Cixian Temple (慈誠宮). The facility sits within a larger commercial area bracketed by Danan Road (大南路), Dadong Road (大東路), and Wenlin Road (文林路), making it Taipei's largest night-market district. The new market structure is an attractive, modernistic architectural work, although the original Japanese-era arched galleries have been retained, the red-brick walls, arched portals and windows, and wooden roof adding a warm, nostalgic air and creating a pleasant mix of old and new. The new



market is impressively large, housing 380 vendors, who continue to work using their original three-shift system.

The first level is divided into three sections: the “heritage long building,” (古蹟長棟) “heritage short building,” (古蹟短棟) and the central-area, the “steel shed” (中央鋼棚). In the long building is found a general marketplace, with vendors selling sundry goods. In the short building the majority of vendors hawk fresh seafood in an area which looks, feels, and sounds like Taiwan's classic old-style markets. The steel shed area between the two is busy in the morning with vendors selling fresh meats, vegetables, and fruits along with general merchandise, while in the afternoons sellers of daily-use items, snack foods, and souvenirs take over. There is also a large underground food court below all this, with the same type of open-concept, non-partitioned layout used in the original market. This layout preserves the timeless, unobstructed layout and sensory experience of the traditional Taiwan night market for tourists, with the environment “updated” to modern standards for cleanliness and brightness.

It has always been the hot food vendors that have been the big draw at the Shilin “Night” Market, and this tradition continues on the underground level at the new Shilin Market – all the snack-food purveyors from the old temporary facility have moved in. You'll find all the great names that have so long been synonymous with the market, in all its guises, among them “little bun wrapped in big bun” (大餅包小餅), “coffin cakes” (棺材板), thick squid soup (花枝羹), oyster omelets (蚵仔煎), fried beefsteak (鐵板牛排), Shilin sausages (士林香腸), and medicinal pork-ribs (藥燉排骨). The same owners are all still here, serving up the same smiling faces and familiar old-time tastes.

The new Shilin Market is open all day, every day, and is just a 7-minute walk from MRT Jiantan Station. After feasting on traditional Taiwanese treats, be sure to hit the surrounding area's streets and alleys for some serious browsing! 📷

- 1-2. The refurbished Shilin Market facility has an attractive modern exterior and features such old-time touches as arched galleries.
- 3. Mornings, the central “steel shed” area vendors sell fresh meats and fruits/vegetables; afternoons are for daily-use items and other merchandise.
- 4-5. On the underground level you find the famed snack items that bring so many tourists, such as “little bun wrapped in big bun” and the freshest fruit drinks.



Information

Shilin Market 士林市場

Add: 101, Jihe Rd. (基河路101號); take MRT to Jiantan Station, take Exit No. 1, then walk along Jihe Rd., about 7 minutes)

Tel: (02) 2341-5241, ext. 2122, 2120 (Taipei City Market Administration Office; 臺北市市場處)

Hours: 1F Mon 13:00~02:00, Tues~Sun 06:00~02:00
B1 Mon~Thurs 15:00~02:00, Fri~Sun 11:00~02:00

Website: www.tcma.taipei.gov.tw



The Veil Lifted Anew – Grass Mountain Chateau, Chiang Kai-shek's First Taiwan Villa

The rays of spring are beginning to warm Yangmingshan Park and the cherry blossoms are bursting open, so what better time to follow the path beside the park's No. 1 Car Park, where you'll come upon a refined Japanese-style villa named Grass Mountain Chateau (草山行館), hidden away amongst cooling shade trees.

The villa was specially built in the 1920s in anticipation of a visit to Taiwan by

Crown Prince Hirohito, and in 1949, when ROC President Chiang Kai-shek first came to live on Taiwan, he chose the villa as his first residence, moving downhill six months later to today's Chiang Kai-shek Shilin Residence (士林官邸) and using this site as his summer retreat.

In 2003 the city's Department of Cultural Affairs began restoration work on the site, transforming it into a cultural-arts salon. In 2007 a fire ravaged the facility, destroying everything but the main entrance, red-brick exterior wall, and entrance-area statue of Chiang. The city once again went to work, restoring the villa to its original glory using file photos, computer-simulation technology, traditional construction methods, and materials. The chateau doors once more swung open to the public on December 30th last year.





In the grounds is a little tree-shaded path that leads you to an expansive wooden deck, stone gateway, and new board inscribed with the characters for “Grass Mountain Chateau.” Inside the entrance is the repaired coatroom, now a small gift shop offering many chateau-themed souvenir items. These include seasonal-theme items with a portrait of the Chiangs, plus Grass Mountain Chateau bookbags, and so on. Next is an expansive, brightly lit room with an attractive wood floor and large wood-frame windows, where late President Chiang entertained guests. Today the space is used as a gallery for the works of local Taiwan artists, and also houses a display guide on the local landscape and on the history of the chateau. The seats in the middle of the room have been made with the black, charred remains of the original ceiling beams, reminding visitors of the 2007 fire.

Beyond the display space and dining facility in the reception room, sparkling views of the Guandu Plain (關渡平原) far below can be enjoyed from under the eaves of the outside veranda.

As you might imagine, this is a favorite spot with visitors. Elsewhere, check out the meticulous reproduction of the bamboo lath and wood lath on two exposed display sections in the indoor hallway, showing Japanese construction methods used in the 1920s. Jieshou Hall (介壽堂), at the rear of the building, is where Chiang Kai-shek met with his most trusted subordinates; today it houses a history display with vintage photographs, historical artefacts, and a documentary film on the chateau. Behind the hall is a wide, open porch built of timber where the first couple would sit for tea, have a hot-spring bath, or enjoy the scenery. Today thick foliage encloses the scene.

Before leaving, sit down in the dining area for a round of home-style “lion’s head meatballs” (獅子頭) and steamed sweet potato, one of Chiang Kai-shek’s

favorite dishes. And don’t forget to take a quick look at the four other buildings elsewhere on the grounds, all originally residential units used by Chiang’s retinue. One is now the home of 92 Art Center (92藝文中心), an art-exhibition space, and the other three buildings, smaller and numbered 88, 91, and 95, are used as studios for artists-in-residence and as cultural-arts spaces. The four add an element of colorful artistic flair to the elegant and reserved personality of this Yangmingshan treasure, where the interweaving of natural beauty, history, and art giving rise to a unique cultural oasis that has, literally, risen from the ashes. 10

6

1. The bust of Chiang Kai-shek in Jieshou Hall was one of the few items to escape the great fire.
2. Rare old photos of CKS have been placed for display on the refurbished fireplace in Jieshou Hall.
3. The reception room in which the First Couple entertained foreign dignitaries now houses a restaurant.
4. Historical information and guide maps on Grass Mountain Chateau are on display in the main exhibit room.
5. Looking out from the corridor off the restaurant, you see a lovely vista encompassing the Guandu Plain, Shezi Island, and Mt. Guanyin.
6. Among the many attractive souvenir items available are bookbags with “Grass Mountain Chateau” as logo.



Information

Grass Mountain Chateau 草山行館

Add: 89, Hudi Rd. (湖底路89號)

Tel: (02) 2862-2404

Hours: Tues~Sun (closed Mon), 10:00~17:00
(food service to 21:00)

Website: www.grassmountainchateau.com.tw

92 Art Center 92藝文中心

Add: 92, Hudi Rd. (湖底路92號)

Tel: (02) 2862-2404

Hours: Tues~Sun (closed Mon), 10:00~17:00




The Generalissimo's World Main Building at Chiang Kai-shek Shilin Residence Now Fully Open

The Chiang Kai-shek Shilin Residence (士林官邸) has long been a very popular Taipei tourist attraction, but until the past year there has always been a catch: the grounds and outer structures were open to the public, but not the main building itself, which remained shrouded in mystery. Finally, after gathering dust for about four decades, much of the residence was thrown open to for public visit in February last year, and in January this year the living quarters on the second floor were also opened. Rooms here include the president's study and Madame Chiang's art studio, and today all appear as they were when the First Couple resided here. Stepping into the residence is like stepping straight back into yesteryear, recapturing scenes from a fascinating, long-gone era.

President Chiang entertained many important guests on the first floor of the two-story mansion. You'll see Western-style sofas amidst a décor that is decidedly Chinese, with polished wood in the classical style a major theme. Among the many key world figures feted here were former U.S. President Nixon and U.S. secretaries of state Dulles and Rusk. Among the many items that speak of the Republic of China's foreign relations and of famous incidents in world history is the reclining chair that Madame Chiang had custom-made for her husband, who had suffered permanent injuries during the infamous Xi'an Incident (西安事變) in 1936 and used the chair while working.

In addition to the period furnishing, many personal items used by the First Couple are on display, including a classically elegant purse and pair of gloves, an antique telescope, and a straw hat. Many visitors

find the "Oppose the Communists, Attain Victory Chess Set" (反共勝利棋) the most interesting of all; the rules of the game have been lost to time, but the set wonderfully captures the all-consuming concerns of the often turbulent Cold War era.

Now spring is here, after visiting the Chiang Kai-shek Shilin Residence, take a stroll through the spacious landscaped grounds with their mountain backdrop, soaking up the fragrance and the beauty of the roses and many other flowers in the garden, a favorite habit of the First Couple. You'll find that though the residence and other buildings reveal no taste for luxurious extravagance, the quest for richness of the spirit is in evidence in the timeless simplicity and elegance of the mansion and surrounding gardens. 

- 1-2. Among the former First Lady's daily-use articles on display in the residence are an elegant purse; another intriguing item is the "Oppose the Communists, Attain Victory Chess Set," echoing the Generalissimo's professed determination to retake the mainland.
3. The second floor of the main building at the Chiang Kai-shek Shilin Residence was the main living quarters for the president and his wife.

Information

Chiang Kai-shek Shilin Residence 士林官邸

Add: 60, Fulin Rd. (福林路60號)

Tel: (02) 2883-6340

Main Building Hours: Tues~Sun 09:30~12:00,
13:30~17:00

(English and Japanese guide services available)

Website: www.culture.gov.tw/frontsite/shilin/index.jsp



Ride the Winds, See Taipei! The Bicycle Loop Network is Now Fully Open

Stand up and take note! The Taipei bicycle-path loop network is now fully open, meaning it's time to haul yourself up, unhitch your two-wheeled iron horse, and hit the road – er, path – to see the city sights!

The loop was completed last December, after the city connected the existing Keelung River (基隆河) and Jingmei River (景美溪) bicycle paths with the “Taipei City Bicycle Loop Network” (臺北市自行車環狀線), which stretches from Nangang (南港) to Muzha (木柵) through the southeast Mountain area. The now-complete loop stretches 58.8 kilometers; starting at Dajia Riverside Park (大佳河濱公園), it follows the left bank of the Keelung River to Nangang, leaves the riverside via Keelung River Water Gate No. 1, and heads through the new hill section, which stretches from Fudekeng Eco-Park (福德坑環保復育園區) to a point near the Taipei Zoo (臺北市立動物園), to link up with the Jingmei Riverside Bicycle Path (景美溪河濱自行車道).

Beyond serving as a link between the existing riverside bike paths, the new line also offers a simple ascent challenge for riders in the Fudekeng Eco-Park area, rising to an altitude of about 160 meters over the 8 kilometer section. This is the only such dedicated path within the city's borders, and is thus a precious resource for bikers. During a leisurely round-loop excursion you'll see such sights as Dajia Riverside Park's fountain show, the Rainbow Bridge (彩虹橋) on the left bank (the country's only S-shape river-spanning pedestrian bridge) and pleasant forest vistas along the winding hill section of the route.

Park your bike and drop in for a look around Gongguan Shopping Area (公館商圈) to enjoy the aroma of books and great snack foods, Taipei Water Park (自來水園區), and Taipei City Hakka Cultural Park (臺北市客家文化主題公園), completed just last year. Or head on to Dadaocheng Wharf (大稻埕碼頭) and take a scenic, romantic Blue Highway (藍色公路) boat tour.

Take a ride on the now-complete Taipei bicycle loop network and the whole of Taipei – together with its many varied sights – awaits! 🚲

- 1-2. Taipei City Mayor Hau Lungbin (郝龍斌) (four from left) officiates at the opening of the Taipei City Bicycle Loop Network, inviting one and all to take up green transportation options to make the Taipei environment more beautiful.
3. The riverside bike path in Dajia Riverside Park Provides both good exercise and great panoramic views.

Information

Taipei City Bicycle Loop Network 臺北市自行車環狀線

Tel: 1999, ext. 8184 (Taipei City Govt. Hydraulic Engineering Office 臺北市政府水利工程處)

Website: www.lohastaipei.tw2.com

The Art of Seal Carving – Beauty in a Small Square



Seals (also known as chops) are carefully carved stone stamps used by the Chinese instead of a signature. Apart from being a convenient way to prove one's identity, however, each seal, however small, is also a representation of a person's deeper self-identity and status. Seal carving is a classic Chinese art form that can be traced back 3,700 years to the Shang Dynasty (殷商時代), its origins lying in the carving of dies used to create impressions on pottery, recording such information as the owner's family/clan emblem, name, official position, organization, or shop name. In more recent times other details such as birth date and age may also be carved. Seals have also been created simply for personal collections, for use as marks by painting and calligraphy aficionados, and as permanent records of favorite maxims, aphorisms, and poetry. The range of fonts and lines seems to know no bounds, and the demands on the seal-maker in terms of time and skill great, placing the "craft" of seal-cutting firmly in the realm of fine art.

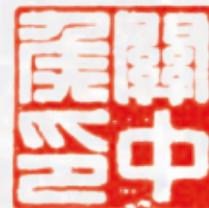
During the Han Dynasty (漢代), seals came to be used to create protective marks on letters and large items being sent to others. In those days writing was done on bamboo or wood slips, and after they were fastened together with string, paste would be applied over the knot and an identification impression made with a seal. Because the area of the paste was limited and a seal had to be carried on one's person, it was small – just 1 or 2 centimeters wide, with a hole drilled through to allow it to be carried on a string or cord. When paper was invented, seals found a much wider range of uses, both seal and character size were expanded, and greater variations in font and structure emerged. During the Song (宋) and Yuan (元) dynasties the literati developed a fascination with seal carving,

and the aesthetics of the composition and script used were raised to a higher plane, elevating seal cutting to the status of an art form.

Worlds of Beauty in Small Squares – Seal Carving Appreciation

Chen Hongmian (陳宏勉) has been studying the art of seal carving for 38 years. Winner of a Sun Yat-sen Art and Literary Award for Creativity in Seal Carving (中山文藝篆刻類創作獎), the top “Seal Cutting Academic Society Award for Young Artists” (篆刻學會新秀獎), and many other honors, his fame as an artist is widespread. Chen is founder of the Taiwan Seal Association (臺灣印社) and also author of a number of publications that promote the art of carving seals. To appreciate seal cutting as art, he says, there's no need to dwell on the meaning or interpretation of the text itself; rather, the aesthetics dwell within the line formation, arrangement, and unity of the whole that you find within the character cases. This allows a more natural intuition of the artistic conception – the message and mood the carver has sought to convey. Thus approach a work of calligraphy as any other work of art.

The main forms used for seal characters, says Chen, are the Oracle Bone Script (甲骨文), Bronze Script (used on bells and ceremonial cauldrons; 金文), Large Seal Script (大篆), and Small Seal Script (小篆). Some, though not many, use the Regular Script (楷書), Cursive Script (草書), Semi-Cursive Script (行書), and Clerical Script (隸書). Carving techniques are the Zhu Wen or Red Character style (朱文印), meaning the seal is carved in relief, with imprints of character lines in red ink, and the Bai Wen or White Character style (白文印), with the characters incised and imprinted lines in white, with a red background. In terms of the classic yin/yang negative/



positive dichotomy, the first style is yang carving (陽刻), the second yin carving (陰刻). The arrangement, the density and spacing, the lightness or heaviness of the structure, and the judicious leaving of blank areas heighten the effect of the impression.

Sometimes, to accommodate the allocation of character strokes, the stroke will be curved or elongated to attain harmony. A famous example of this is Wu Changshuo's (吳昌碩) “Yuan Ding Mo Xi” (園丁墨戲), carved on a piece of the renowned Shoushan stone (壽山石), currently in mainland China's Zhejiang Provincial Museum (浙江博物館). The character *ding* (丁) has only two strokes, and in a bold move to attain balance with the other three characters Wu used a huge dot to represent the character. “When appreciating such works,” says Chen, “see how the composition is rendered upright and foursquare, the cutting firm and confident, and inspect whether the juxtaposition of red and white displays a refined aesthetic sensibility.”

Seal designs are not always limited to purely characters, however. For example, the *Huaya* or “Flower Signature” Seal (花押印), which became popular in the Yuan Dynasty, features the family name at the top and a flower or other artistic mark at the bottom, creating a unique identifier. Both the marks

1. Chen Hongmian, who has studied seal carving for 38 years, is one of Taiwan's most famed artists.
2. High officials in the Han Dynasty used the turtle as composition model, with the prime minister through senior generals using gold color.
3. Seal-engravers are almost inevitably familiar with myriad scripts, and have both steady cutting skills and a superior sense of aesthetics.



and the impressions come in many shapes – long, rounded, gourd-shaped, animal-shaped, and even more imaginative designs. Seals also feature auspicious animal symbols carved along the edges, among them the dragon, phoenix, turtle, and lin (麟; a mythical animal resembling a deer). A device often used to heighten an impression's aesthetic appeal is to carve a horizontal or vertical line in the middle – or both, forming a cross – to form character domains. In the Han Dynasty a popular device (called the Bird and Worm Seal; 鳥蟲篆) used on private seals was to carve a bird head at the beginning of a character or at the end, making the characters flow as though formed into a long dragon. In some cases fish shapes were substituted, the fish being another auspicious animal, symbolizing wealth and social position.

To get a better idea of this beautiful art form, pay a visit to the National Palace Museum (故宮博物院) to take in the permanent exhibition Sharing Treasures: A Special Exhibition of Antiquities Donated to the Museum (寄情人間—歷年捐贈器物特展), which features a superb selection of exquisite seals owned by famed historical figures, the seals serving as priceless witnesses to both their owners' and to China's history. Admire as well the different types of beautiful stones used and the sensual aesthetics of both the characters and the many scripts used to write them. Another fine idea is a trip to the Museum

of Medical Humanities (臺大醫學人文博物館) and the exhibition The World of Engravings and Poems (刻與話的世界), showing until March 31st, which revels in the art of the seal married with that of the classical poetry.

Seal-Carving DIY

Most seal-carving experts are also highly skilled at calligraphy, masters of the various styles described above (such as regular and clerical script), and are also masters at both carving with and sharpening the seal-carver's most important tool, the knife. Another indispensable asset is development of a heightened sense of aesthetics. Chen teaches the art at Chiang Kai-shek Memorial Hall (中正紀念堂) and National Taiwan Arts Education Center (國立臺灣藝術教育館), and has taught many students who have not had a base in calligraphy, but who have nevertheless been able to carve beautiful works. Says the master: "With just a basic sense of beauty and a nimble hand, you too can create seal-carving art."

The basic tools needed (knife, seal stone, seal bed, and seal-character dictionary) are all available at numerous Taipei shops, including Hui Feng Tang (蕙風堂), You Sheng Chang (友生昌), Mei Yu Tang (美玉堂), and Jia Yi Meishushe (佳藝美術社). According to



4



5



6



7

Chen, “Do not over-prepare; a basic flat knife will do. Select a pyrophyllite (also known as pencil stone) with a hardness of 2~2.5 degrees, a dedicated seal stone that is firm and solid, and a proper seal-engraving character dictionary. Adjust the character-size ratio, rub impressions of the characters on the seal surface, pick up the knife, and you are ready to begin sculpting your lines.”

“Studying seal carving is not difficult,” says Chen, “but you must concentrate on perfecting each step before proceeding, and the only way to improve is through experience, with a teacher for guidance.” He also warns that once you seek to unearth this art's secrets, and they begin to reveal themselves to you, you'll fall in love and be hooked forever. 📌



4. Early seals were used as tokens of trust, with most featuring uncomplicated surname representations.
5. The *Huaya* or “Flower Signature” Seal became popular in the Yuan Dynasty, with flowers or other artistic marks used as unique identifiers.
6. In one of the National Palace Museum's permanent exhibits you can enjoy the seal engraving and beautiful calligraphy of some of the most famous masters of the art.
7. At the Museum of Medical Humanities, enjoy the classical marriage of seal art and painting.
8. Chen Hongmian has taught many students who've had no base in calligraphy but have been able to carve beautiful works.

Information

Where to Study Seal Carving in Taipei

Chiang Kai-shek Memorial Hall 中正紀念堂

Add: 21, Zhongshan S. Rd. (中山南路21號)

Tel: (02) 2343-1100, ext. 1125

Website: www.cksmh.gov.tw

National Taiwan Arts Education Center

國立臺灣藝術教育館

Add: 47, Nanhai Rd. (南海路47號)

Tel: (02) 2311-0574, ext. 117

Website: www.arte.gov.tw

Where to Buy Seal Carving Materials in Taipei

Hui Feng Tang 蕙風堂

Add: 123, Sec. 1, Heping E. Rd. (和平東路1段123號)

Tel: (02) 2321-1380

You Sheng Chang 友生昌

Add: 23, Sec. 1, Heping E. Rd. (和平東路1段23號)

Tel: (02) 2341-7580

Mei Yu Tang 美玉堂

Add: 142, Shida Rd. (師大路142號)

Tel: (02) 2369-2177

Jia Yi Meishushe 佳藝美術社

Add: 83-1, Sec. 1, Heping E. Rd. (和平東路1段83號之1)

Tel: (02) 2351-7733

Related Exhibitions

Sharing Treasures: A Special Exhibition of Antiquities Donated to the Museum

寄情人間—歷年捐贈器物特展

Venue: Gallery 303, National Palace Museum
國立故宮博物院303室

Add: 221, Sec. 2, Zhishan Rd. (至善路2段221號)

Tel: (02) 2821-2021

Hours: Open year-round, 08:30~18:30; hours extended to 20:30 Sat, free entry during extension

Website: www.npm.gov.tw

The World of Engravings and Poems

刻與話的世界

Venue: Museum of Medical Humanities
臺大醫學人文博物館

Add: 1, Sec. 1, Ren'ai Rd. (仁愛路1段1號)

Tel: (02) 2312-3456, ext. 88929

Hours: Until 3/31, Tues~Sun 09:30~16:30 (closed Mon and national holidays)

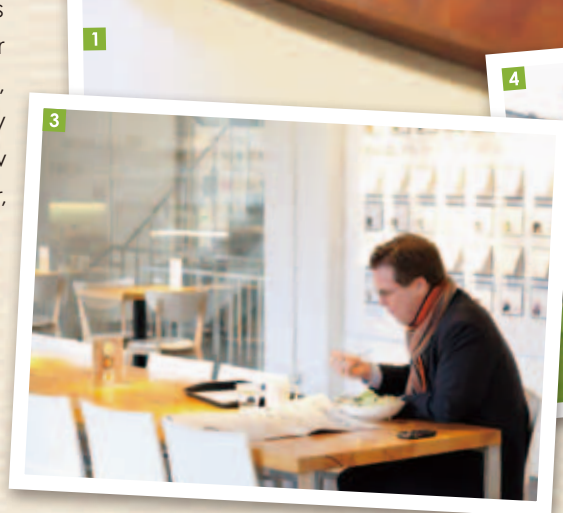
Website: mmh.mc.ntu.edu.tw

Put a Spring in Your Step!

Healthy Light Meals in Taipei



The concept of eating less (and more healthy) food is now mainstream, with increasing numbers of diners focusing on wholesome and natural foods. More and more Taipei restaurants are opening, or changing their menus to cater to this market, further enriching the city's culinary options. Let's take a tour of a few Taipei restaurants offering lighter, healthier food cuisine.





Creative Light Meals, Both Eco-friendly and Artistic – MOT/KITCHEN Light

URS 21 – Chung Shan Creative Hub (中山創意基地 URS21) is part of the city's ongoing urban regeneration project, which has transformed the old, disused Zhongshan Tobacco and Liquor Distribution Center into a base for cultural-creative inspiration. It serves the city's denizens as another source of creative fresh air, with a neighborhood green space and the MOT/KITCHEN Light restaurant on the first level, while exhibit spaces, interactive classrooms, and artist studios occupy the second and third levels. A place steeped in history, it is now also one steeped in new cultural ideas and inspirations for quality creative living.

The restaurant seating commands an unfettered view of the grassy lawn outside – something of a rarity in busy Taipei. The focus on healthy light meals here has resulted in such creations as the restaurant's signature offering, the Dill Smoked Salmon Focaccia Sandwich. The salmon is from Norway, served with a light lemony dill sauce, onion, tomato, and Romaine lettuce, all wrapped in fresh Focaccia bread, which is characterized by a crispy skin and fluffy interior. Each bite is a multi-textured experience, the ingredients complementing each other.

Afternoon tea here is quite popular, especially the Smoked Chicken & Broccoli Quiche, which comes with a memorably tasty yellow-curry yogurt salad, and a silky, rich Strawberry with Caramel Mascarpone Roll. Whichever you choose, you're guaranteed a leisurely and satisfying break. Visit URS 21 from March 24 to May 6 and you also can enjoy an exhibit on award-winning architect Hsieh Yingchun (謝英俊) upstairs; Hsieh helps communities rebuild after natural disasters. Bazaars and cultural performances are also sometimes held on weekends/holidays.

1. Dill Smoked Salmon Focaccia Sandwich, a multi-textured taste exploration.
2. Wind Mushrooms Salad with Wine Vinegar, featuring three kinds of mushroom, organic vegetables, and Balsamic vinegar.
- 3-4. MOT/KITCHEN Light features minimalist design, and offers an irregular schedule of outdoor green-space art exhibits, making your dining experience relaxed and rewarding.
5. At Xiao Shan Tang attractive timber, colored glass, and LED lighting brings new glory to old factory buildings.
6. Xiao Shan Tang's organic risotto with truffle, scallop, and mullet roe.



6



5

A Historical Space Rendezvous – Xiao Shan Tang

The recent 2011 Taipei World Design Expo (2011臺北世界設計大展) served as a grand coming-out party for the Songshan Tobacco Factory (松山菸廠). Despite its large size and central location, in one of the city's busiest districts, this long-disused heritage facility was for many years hidden away behind high walls. The expo announced the facility to Taiwan and the world in its new guise, the Songshan Cultural and Creative Park (松山文創園區), hosting visitors from around the globe. The many well-preserved buildings on the grounds, together with the artful landscaping, meld the historic and contemporary, and the continuing line-up of arts and cultural exhibitions and performances scheduled are set to make the site one of Taipei's most important cultural centers.

In the rear area of the grounds by the pond, a building formerly used for machinery repair has undergone a lovely transformation into a space of warm artistic appeal. This is now the home of Xiao Shan Tang (小山堂), a restaurant where heritage is made resplendent with the liberal use of timber, colored glass, and LED lighting. One wall is decorated with posters that used to advertise the former tobacco factory's products, and old photos of the workers, creating an appealingly nostalgic mix of old and new. Another wall is covered with old movie posters that serve as a retrospective of the film-industry careers of the restaurant owners,



7



8

Zhang Yi (張毅) and Loretta Yang (楊惠珊), who famously left the industry to become glass artists. The display of the owners' personal book collection adds a further aesthetic dimension.

The Xiao Shan Tang menu is quite novel, bringing Italian culinary techniques to local Taiwan ingredients. Among the creative delicacies here is the risotto, in which organic duck rice from Miaoli County is used and matched with such local specialty items as braised fatty pork and mullet roe, with the rice prepared risotto style, with threads of melted cheese. The result is a harmonious marriage of East and West.

The various light foods served here are both refreshing and quietly elegant, for instance the Japanese-style rice rolls with cheese, basil, and sesame, or the salad featuring grapefruit, asparagus, and various other vegetables. These are accompanied by tasty longan bread and are filling and hearty without leaving you feeling bloated or sluggish.

Fresh, Bright, Creative Vegetarian Fare – Easy House

Located down an alley not far off Ren'ai Road, the façade at Easy House Vegetarian Restaurant (寬心園



9



11



10

精緻蔬食) is attractively decorated with bamboo and other plants and flowers. The restaurant is a wonderfully peaceful place, a great spot to forget the fatigue and stress of the day, while enjoying the kitchen's inventive redefinition of vegetarian cuisine.

All the vegetables and fruits used are grown in Taiwan, and all are delivered fresh, directly to the restaurant. High-fiber cereals and mushrooms are given prominence, but each set meal comprises a rich medley of at least 10 different fruits and vegetables. The concept of eating healthy, all-natural food is stressed, but the primary aim is to create original dishes that taste great, but also happen to be vegetarian. Both European and Japanese culinary techniques and presentation are brought to the local ingredients while leaving the original flavors to speak for themselves.

One of the restaurant's new light-meal offerings for this spring is "Lily Fragrance Noodles" (百合飄香麵), in which the light sweetness of lily flowers are introduced to the soft, silky texture of Red Pitaya flowers, quick-fried in a sauce made with XO cognac and placed over a cake of pressed, hand-crafted noodles. Another is "Chinese Yam with Fresh Vegetable Pot" (淮山鮮蔬煲), which features pressed-vegetable balls cooked in a pot containing a hearty vegetable broth, with winter melon added for texture. The delicate aromas of spring literally float forth from within.


Easy House offers an afternoon tea menu, with fresh-squeezed orange accompanying the numerous kinds of pastries and light foods. Especially delectable options include the “Five Grain Pumpkin Pie,” which features pumpkin paste and mushroom, and the “Handmade Chinese Turnip Cake.” With a gurgling water feature providing the background music, quietly contemplating the nouveau-cuisine creations set before you, it's easy to see how vegetarian food at its highest level can sate both body and spirit.

Innovative French-style Light Cuisine – Butter Café & Creperie

In the film *Julie & Julia*, the husband of Julia Child, played by Stanley Tucci, says to his wife: “You are the butter to my bread, you are the breath to my life.” It is butter that breathes life into French cuisine, and it can be said that butter and love itself are intimate companions – hence the name of this attractive French oasis in Taipei.

The restaurant's two signature dishes are crêpes and galettes, each made in the traditional style and strictly to order. Sweetness can be adjusted to the individual taste, so it's not surprising that these are especially big hits with the many female customers looking to eat light and healthy while still getting a sweet fix. One of the more popular selections is the crepe served with cinnamon, roast apple cubes, and sesame ice-cream, which is finished with a dollop of caramel sauce, producing a smooth and delightful fruit and spice tandem. Amongst the galette options, perhaps most favored is the thick ham, cheese, and wild mushroom combo, served with a sunny-side up egg on top, the

runny yolk moistening the dish. The house apple cider is a great compliment to a meal, enjoyed just the way it is in a French public house – a homey touch especially appreciated by foreign tourists.

Another extremely tasty light-meal idea here is the fried soft-shell crab served with baked aubergine and low-fat mashed potatoes, moistened with aged wine vinegar. Whichever culinary creation you choose, adding a bit of extra spice to your visit may be the visual stimulation provided by one of the exhibits of works by young artists sometimes staged here. 



Information

MOT/KITCHEN Light

Add: 21, Sec. 1, Minsheng E. Rd. (民生東路1段21號)

Tel: (02) 2536-7767

Xiao Shan Tang 小山堂

Add: 133, Guangfu S. Rd.; in Songshan Cultural and Creative Park (光復南路133號;松山文創園區)

Tel: (02) 2766-5610

Easy House Vegetarian Cuisine

寬心園精緻蔬食

Add: 51, Alley 4, Lane 345, Sec. 4, Ren'ai Rd. (仁愛路4段345巷4弄51號)

Tel: (02) 2721-8326

Butter Café & Creperie 法式輕食餐廳

Add: 2F, 122-1, Sec. 4, Zhongxiao E. Rd. (忠孝東路4段122-1號2樓)

Tel: (02) 8772-3832

7. Among Xiao Shan Tang's great selection of light, refreshing foods are its Japanese-style rice roll, vegetable salad, and longan bread.
8. The walls are adorned with vintage photos and movie posters, giving Xiao Shan Tang an inviting new/old mix.
9. The Lily Fragrance Noodles features numerous types of vegetables and the distinctive light taste of lily, a scrumptious springtime treat.
- 10-11. A newly introduced Easy House springtime special, called Lily Fragrance Noodles, and the Five Grain Pumpkin Pie, featuring fresh pumpkin paste and mushroom.
12. Butter Café & Creperie has a dining environment like that of a Paris bistro.
13. The crepe served with cinnamon, roast apple cubes, and sesame ice-cream, finished with caramel sauce, creates a delectable fruit/spice duet.



The Perfect Springtime Snack – Runbing

In many countries around the world a popular edible treat is made by wrapping tasty ingredients in some form of round flat bread or pancake. Mexico has its burrito, France its crepe, India its kathi roll. In Taiwan, you might say, spring has not officially arrived until you've had your first *runbing* (潤餅), which is a type of non-fried spring roll.



The *runbing* does indeed have its origins as a specifically spring-time food. According to the Song Dynasty book *Sui Shi Za Ji* (歲時雜記; “Miscellanea of the Age”), the food goes all the way back to the Spring and Autumn Period (春秋時代), when people would make sacrificial offerings of the “Five Pungents” (五辛) to the God of Spring (春神) – onions, garlic, chives, green onions, and leeks. Because the five are hard to swallow, they were “disguised” in a round flat cake. Thus the *runbing* was born, which the Chinese also call a *chunbing* (春餅) or “spring cake/pancake.”

Over time, this sacrificial offering also began to be used in ancestor worship. People in different places have different reasons and stories to explain this, but in Taiwan a key attraction is its convenience; it has become a favorite shared edible treat during the spring Qing Ming (清明 : Tomb Sweeping) Festival, during which tombs are cleaned, ancestors honored, and extended families reunite — possibly for the only time during the year.

Taipei is home to people of different Chinese ethnic groups, and so the ingredients used in their *runbing* are naturally also different. It can be said, then, that wrapped inside each *runbing* are both a unique set of tasty morsels and also a family's collective memories.

Can't wait to try one yourself? There's no need to wait for Tomb Sweeping Day (on April 4th, this year) for nowadays *runbing* sellers can be found at most markets and night-markets. The most common fillings are pork slivers, bean sprouts, Chinese cabbage, egg slivers, sugar, and finely ground sweetened peanut powder, but every family and seller has their own special twist.



3



4



5

In Taipei there are a few especially well-known places to buy *runbing*. Wan Fu Hao (萬福號), located on Chongqing North Road (重慶北路), has been making people happy for over 80 years. It also has two other famous treats beyond its *runbing*—*guabao* (刈包; braised pork wrapped in a steamed bun) and *rouzong* (肉粽: glutinous rice with meat and other ingredients wrapped in leaves). This family's *runbing* business started in mainland China's Xiamen (廈門), is now in its fourth generation, and uses moist cabbage as its main ingredient. Says the owner: “*Runbing* are also called spring pancakes, as you know. In Taiwanese the pronunciation of the word ‘spring’ (春) and ‘surplus’ (剩) are homonyms; the Taiwanese tradition is to take extra or leftovers from the spring holidays and wrap them up as *chunbing* ingredients, not wasting a thing. This symbolizes the idea of *xi fu* (惜福), or “cherishing your good fortune.”

Another recommended place to go is Daqiaotou *Runbing* (大橋頭潤餅) in the Yansan Night Market (延三夜市) by Yanping North Road (延平北路) near Taipei Bridge (臺北橋). Its secret is to use curry to augment the flavor of the cabbage, accompanied by soy-braised meat and peanut powder, in an especially chewy shell made with wheat flour. This is a premier destination in Taipei for *runbing* aficionados. Way over in Neihu District, in the night market on Lane 737, Section 1, Neihu Road, you'll find Lai Guest Chinese Burrito (萊客潤餅捲), part of a Taipei chain. There are a number of different flavor selections on the menu, including mustard and black pepper, but what is most special about this place is that the ingredients are pressed and filtered to remove excess moisture and maintain freshness, making the *runbing* here especially good for takeaway because, unlike most *runbing*, the shell won't quickly become soft.

Runbing is a favorite late-night snack for many Taipei folk, so most *runbing* sellers are open from the afternoon into the late hours. Each *runbing* is loaded with cultural history and tradition, and over time Taiwan has developed its own unique version of the treat. Now's the time to get out there and buy your first *runbing* of the new lunar year, so your spring can officially start! 🍴

Information

Wan Fu Hao 萬福號

Add: 29, Sec. 2, Chongqing N. Rd. (重慶北路2段29號)

Tel: (02) 2556-1244

Daqiaotou Runbing 大橋頭潤餅

Location: In front of 38, Sec. 3, Yanping N. Rd., Yansan Night Market (延三夜市延平北路3段38號前;)

Tel: (02) 2594-6593

Lai Guest Chinese Burrito 萊客潤餅捲

Location: On Lane 737, Sec. 1, Neihu Rd. (內湖路1段737巷內)

Tel: 0981-981-949

1. If in dire need of a *runbing* fix, satisfaction awaits at most every market or night market, it seems.
2. Wan Fu Hao's *runbing* is warm and juicy, the delicious Chinese cabbage giving Taipei aficionados a tasty old-time flavor.
3. Different sellers use different ingredients, creating great *runbing* variation.
4. Another top choice with Taipei *runbing* devotees is family-run Daqiaotou Runbing, now in its second generation.
5. At Lai Guest Chinese Burrito, moisture is filtered from ingredients, keeping the skin firm and making its *runbing* especially good for takeaway.

Taipei Offers a Wondrous Range of Gift Ideas, at Your Fingertips

This city's exuberant cultural scene has given rise to an extraordinary range of gift item choices, although the places where they can be found are frequently not where you might expect. One good example is the Taipei City Hall Publications & Souvenirs Exhibition Center (臺北市政府出版品紀念品展售中心), where you'll find many nifty items with a strong Taipei City theme. Another is the SunnyHills (微熱山丘) shop, located down an alley in the Minsheng Community (民生社區), which uses delicious Taiwan home-grown pineapple in its even more delicious (and hugely popular) pineapple cakes. These are splendid places for travelers from overseas to go hunting for the perfect souvenir or gift.

Fetching City-Theme Mementoes – Taipei City Hall Publications & Souvenirs Exhibition Center

Many foreign visitors to Taipei enjoy hunting for gifts that best capture the Taipei character and spirit. The perfect place to find a selection of these is in the Taipei City Hall Publications & Souvenirs Exhibition Center, just to the left inside the main entrance to Taipei City Hall, which is itself located in the Xinyi Planning District (信義計畫區). On display in this bright space is an attractive range of well-designed and well-crafted Taipei-theme merchandise.





Within its compact, 33 square-meter space, the Center offers publications produced by the city government's various bodies, city-themed gifts and souvenirs, music CDs and scores, and merchandise related to city travel and Taipei's arts and culture. There are hundreds of options to choose from in this "small is beautiful" creative space.

The unit in charge of the development of the city's souvenir line is the Department of Information and Tourism, whose approach is "the city is the brand," rolling out a constant stream of new items graced with attractive city images and designs. The series has been extremely successful, marketing the "Taipei" brand around the globe.

Here's a little sampler of the many nifty city-theme objects on display. The "Taste · Taipei City Cup Set" (品味·臺北城對杯組) has one black cup and one white, which come with images of such iconic sights as Taipei 101, the Miramar Ferris Wheel (美麗華摩天輪), and the familiar green "walking man" icon from the city's pedestrian-crosswalk signals. The "Crossing Eras Taipei City Commemorative Watch Set" (跨時代·臺北城紀念對錶) features two watches in a simple, elegant box. The watches are decorated with images that represent the Taipei of yesteryear and of today, connected by the ticking hands which represent the march of time. The transparent "Glories of a City Paperweight" (城市之耀

1. The Taste · Taipei City Cup Set sports images of Taipei 101 and the Miramar Ferris Wheel, capturing the character of the cityscape.
- 2-3. Baseball caps and T-shirts emblazoned with "TAIPEI," along with a newly introduced series of cool hoodies, are hot sellers with younger buyers.
4. The first-floor Taipei City Hall Publications & Souvenirs Exhibition Center has many clever items with a Taipei City theme.
5. The intriguing Glories of a City Paperweight is transparent, with images of famous Taipei landmarks on the old-style golden key sealed within.
6. In the Taipei Confucius Temple souvenir series, the red "Confucius says" bookbag and Analects calligraphy scarf are in hot demand.
7. The Taipei City Hall Publications & Souvenirs Exhibition Center also has a wealth of city travel-related materials published by the city government.

文鎮) has an old-style golden key sealed within, and a line-up of the city's scenic sights outlined along the key's shaft, representing Taipei's long line-up of sights and its pride. The "Taipei Story Collage" (臺北故事拼貼) coaster series features city-theme texts on the top surface of each, and an illustration of an important city landmark on the bottom; line up the images and the story of Taipei unfolds.

The center's hottest-selling line of late is its array of baseball caps and T-shirts emblazoned with "TAIPEI" in capital letters, along with a new series of hoodies which has recently been unveiled, in cool, contemporary designs.

Another line of merchandise that enjoys strong demand is the Taipei Confucius Temple (臺北市孔廟) series, especially the "Confucius says" (子曰) bookbag, which comes in the red color of the temple's walls, symbolizing a passion for gaining knowledge. On each bag is Confucius's famous maxim "Learning without thought is labor lost; thought without learning is perilous" (學而不思則罔、思而不學則殆), in both English and Chinese. Also popular is the Analects calligraphy scarf, which has embroidered calligraphy from the famous Confucian classic, the large, black Chinese characters creating a bold and strikingly compelling fashion statement.



Sweet Treats, Both Traditional and Original – SunnyHills

In Taiwanese, the characters for “pineapple” (鳳梨) are pronounced *ong lai*, which has the same pronunciation as the phrase “luck coming” (旺來), thus making the pineapple a highly auspicious symbol. The pineapple cake (鳳梨酥), invented in Taiwan and a favorite local treat, contains pineapple paste in its filling, which has a light sweetness and is neither sticky or greasy. Each cake is a bite-sized square, with a flaky outer shell, its golden hue and shape reminiscent of gold bars and thus wealth, adding to the auspicious nature of the snack. The fact that they are also delicious is another reason why they have become highly appreciated, and have been voted by the public one of Taipei's top ten gift items. The competition among cake-sellers is fierce, and it seems every Taipei citizen can name the most famous shops. In recent years however a new name, SunnyHills, has started to roll off people's tongues, known for its use of 100% premium Taiwan home-grown pineapple.

Most bakeries add winter-melon paste to their pineapple filling, which eliminates stickiness and the fibrous texture of the fruit, creating a smooth and delicate sensation on the palate. Some shops even use 100% winter-melon paste. SunnyHills, however, uses only pineapple in its cakes. The success of the SunnyHills name lies in the way it takes a traditional Taiwan confectionery and creates a new brand, while also supporting



8,11. The SunnyHills pineapple-cake packaging is simple and dignified, attractively distinctive from other such products.

9. SunnyHills calls its gourmet items “sun baked delicacies.”

10. The elegantly decorated SunnyHills Taipei shop is in a renovated old residential building.

Taiwan agriculture, and providing a new market for the island's declining traditional farming sector and seeking to provide farming families with a more stable income base.

According to manager Xu Shengming (許勝銘), the pineapple cake is a traditional Taiwan pastry treat, “traditional” signifying closeness to the local earth and adherence to tried-and-true methods. Nevertheless, it is entirely possible to build on this traditional base and bring the pineapple cake new life and a contemporary update, giving customers a novel experience and creating a completely new market. SunnyHills adheres to this philosophical base in walking its own road.

Xu is originally from Nantou County (南投), where he was a tea farmer. Joining with his cousin, who was an office worker, his uncle (a master baker) and his older brother (who was in the sci-tech industry), the quartet decided to become entrepreneurs. They hired an advisor with expertise in building international brands, and launched themselves on a mission to create a new name in pineapple cakes. All four spent their youths on farms in mountainous Nantou, and their goal has been to bring the personality of home-made food creation to their product, using the most natural local ingredients and adding home-style TLC as a key ingredient in all their baking. SunnyHills has positioned their gourmet pineapple cakes as “sun baked delicacies,” with 160 employees now working at their premises on Mount Bagua (八卦山) and with their organically-grown pineapples sourced from almost a hundred hectares of local farmland. The contracts that SunnyHills signs with local farmers give guaranteed fair-trade prices and, in return, give the company peace of mind by ensuring quality and quantity of supply.

The SunnyHills approach to promotion and marketing is also unique. Their Taipei shop has a warm and inviting atmosphere, with wood used in the décor and distinctive “Hiroshima” seats created by a Japanese designer. The Taiwan custom is to entertain guests with tea, and SunnyHills receives arriving customers with samples of its confections as well as tea, allowing them to taste a wide range of possibilities before making their purchase. This approach helps to ensure customers receive a good first impression, resulting in favorable word-of-mouth promotion and brand recognition that has grown by leaps and bounds, quickly making Sunny Hills products much-sought-after gifts. 📍



12. The defining characteristic of the SunnyHills pineapple cake is the exclusive use of pineapple grown in the owner's home area.

13. The spacious SunnyHills retail space is inviting; customers are received with gratis tea and pineapple-cake samples.

Information

Taipei City Hall Publications & Souvenirs Exhibition Center

臺北市政府出版品紀念品展售中心

Add: 1F, 1, Shifu Rd. (市府路1號1樓)

Tel: 1999 (dial 02-2720-8889 if outside Taipei City), ext. 3391

Hours: Sun~Mon 09:00~18:00

Other Places to Buy Taipei City Publications & Souvenirs:

1. Taipei Confucius Temple 臺北市孔廟

Add: 275, Dalong St. (大龍街275號)

Tel: (02) 2592-3934

2. Taipei World Trade Center (Taipeilook) 世貿一館

Add: 5, Sec. 5, Xinyi Rd. (信義路5段5號)

Tel: (02) 2720-9038

SunnyHills 微熱山丘

Add: 1, Alley 4, Lane 36, Sec. 5, Minsheng E. Rd. (民生東路5段36巷4弄1號)

Tel: (02) 2760-0508

Website: www.sunnyhills.com.tw

Down Shady Lanes

A Leisurely Tour of the Minsheng Community and Fujin Street Area

Taipei is a city that, at first sight, seems like a forest of tall buildings. Dip into areas behind, however, and you'll find many a small, thriving community. One of these is especially interesting; located in Songshan District (松山區), the Minsheng Community/Fujin Street area (民生、富錦街區) boasts 20 parks, leaf-shaded arteries, stylish restaurants, creative boutiques, and a noticeably slower, quality-oriented cosmopolitan approach to living. And it's all available at the most reasonable prices, making this a cultured urban oasis that calls out for exploration by the budget traveler in the warming days of early spring.

Tour Route: Stroll leafy Fujin St.→Fujin Street No. 108 (breakfast)→Caves Art Center, DJ Art Gallery→Browse Xinzhong St. specialty shops (Fen Casa, Bonjour, Debut)→Sonnentor Café (leisurely lunch)→Meander Xinzhong Park→Otaru Syphon Coffee(drink coffee)→Browse Fujin St. specialty shops (Lane & Trip, Daughter's Café, 3.co, funfuntown)→Ramble Fujin No.3 Park→Chieh Yun Hsuan (nostalgic dinner)→SunnyHills (shop for gifts & souvenirs)→Taipei Songshan Airport Observation Deck (watch planes takeoff/land, night scenery)



A Leafy Street Ramble – A Gentle Start to a New Day

A ride on the MRT Wenhua Line starts our day. Get off at Songshan Airport Station and walk along Dunhua North Road (敦化北路), then turn onto quiet, tree-lined Fujin Street. You'll immediately notice that your new surroundings have the calm and cozy ambiance of a small town in Europe, and that this is a place where creative souls have free rein to let their visions blossom. Designers and advertising studios have flocked here, setting up shop, and a steady stream of film and TV-drama crews come for location shoots. The Minsheng Community (民生社區) originally took shape as a planned residential quarter built by the U.S. military, and there's parkland and other green spaces aplenty. Life slows down and spirits calm in this enclave, as you'll quickly find while meandering along the tree-shaded streets.

The fragrance of the thick foliage and health-boosting phytoncids awaken and invigorate the senses. Drop in at Fujin Street No. 108 (富錦街No.108) for a hearty alfresco American, French or Chinese-style breakfast, in the secluded, leafy courtyard.



After breakfast, a pleasant round of art appreciation is in the offing at two quality local galleries. Caves Art Center (敦煌藝術中心) stages oil paintings and DJ Art Gallery (典匠藝廊) focuses on Chinese ink paintings by Taiwan artists, sculptures and ceramics by artists from mainland China and Taiwan; the artwork on display is changed at irregular intervals.



Browse Xinzhong Street's Specialty Shops – Warm Hospitality, Contemporary Living



Many of the shops on Fujin Street open toward the afternoon, so if it's still early, a good idea is a stroll toward Xinzhong Street (新中街), home to another fine collection of shops of unique style.

Fen Casa sells daily-use articles, tea, and organic food sourced from around the world, and also occasionally offers cooking classes. The name "Fen

Casa" is a combination of the name of the proprietess and the Italian word for "home/household." Step into Bonjour (朋廚烘焙坊) next door, and you enter an aromatic "bread heaven," the sight of the glossy golden-brown creations emerging fresh from the oven instantly causes happy pangs of hunger. Among this bakery's numerous other "hot" sellers are Cannele de Bordeaux, Kouign-Amann, and Sea Salt French Balls. Debut (初試啼聲花坊), close to Xinzhong Street, sells special floriculture items and unusual plants, and both the merchandise and the boutique itself are showcases of the owner's design ingenuity and the rich creative energy that defines the Fujin Street neighborhood.



More Fujin Street Originality – Rich in Inspiration

Noon is now fast approaching, and the healthy meals at laid-back Sonnentor Café (日光大道) beckon. The "Sonnentor" name has its origins as an Austrian organic food and beverage brand, but in Taiwan has morphed into an innovative space blending chic and eco-friendly concepts with a focus on fine foods and modern art. The interior is set up much like an art gallery, with works by contemporary artists on display, and the kitchen provides a wide-ranging and innovative continental European menu that changes with the seasons. Topping things off are colorful sales stands of the freshest local Taiwan fruits and vegetables.



1. The leafy courtyard at Fujin Street No.108 offers fulfilling breakfasts.
2. Works from the artists from both sides of the Taiwan Strait featured at Caves Art Gallery.
3. Fen Casa offers everyday items sourced from around the globe.
4. At Debut enjoy the creativity of master horticulturalists.
5. Bonjour's bread comes fresh from the ovens each day.
- 6-7. Sonnentor Café has many modern artworks on display, and the menu can also be said it be a work of art.



After lunch head across the street to Xinzhong Park (新中公園) for a postprandial constitutional, soaking in the spring warmth amidst landscaped flower beds and shade-offering trees, watching other folk taking their own constitucionals or going about their leisurely daily business on a bicycle.

Another fine choice at lunchtime (or anytime) is nearby Otaru Syphon Coffee (小樽手作咖啡). This café has attractive timber tables and seats, soft lamplight, and a tasty menu that includes a lip-smacking chocolate marshmallow latte, hand-made cookies and biscuits made daily, and a cheesecake that is delectably special. Happiness, you'll find, is found on the way to the bottom of a steaming, aromatic, mellow cup of premium Java.

The creative shops along Fujin Street begin to open after lunch. Lane & Trip (輪粹生活), a premier choice among local cycling enthusiasts, stocks premium-brand bicycles and accessories from England, Germany, the USA, and elsewhere. Located on the first floor of a former apartment building is Daughter's Café (朵兒咖啡館), the setting for a popular local feature film; movie fans come here in number, as do lovers of coffee. The unusually named 3.co (3.co當代瓷器傢飾) is a place for Taiwan's ceramics artists to show off their creative talent; the wares on show are both works of art and functional items. funfuntown sells smart-looking retro household furnishings, lighting, and objects d'art. funfuntown is a marvelous emporium filled with goodies from many countries; perhaps its most interesting attraction is how it finds new, innovative, and sometimes quite surprising decorative uses for vintage items laden with history.



A Neighborhood that Stays Up Late – Minsheng Community's Fine Foods, Fine Streetscapes

As the sun starts to set, walk by Fujin No. 3 Park (富錦三號公園), enjoying the site of playing kids and this community's happy vitality.

It's time now to sit down for a good dinner, and Chieh Yun Hsuan (介云軒), a well-known home-style Shanghaiese restaurant, is a great choice. The menu features old-style Jiangzhe (江浙) culinary classics, and the quaint, rustic display cabinets are filled with nostalgia-inducing appetizers. The combination of elegant wooden antiques, warm hospitality, the elegant appetizers, and the friendly atmosphere makes you feel as though you've stepped back into Shanghai in its golden years.

The end of the day is nigh, but before heading home there are still a couple of things to do. First, head over to SunnyHills, down Lane 36 of Minsheng East Road, Section 5 (see page 30), to pick up some of their yummy pineapple cakes; these great snack treats are also favorite gifts with the "true taste of Taiwan" packed inside. Then walk over to the 180-degree view deck at Taipei Songshan Airport (臺北松山機場), inaugurated last year, where the attractive seating

looks more like sculpture and actually glows at night. From here there are thrilling up-close views of planes landing and taking off and of the coruscating lights of the city beyond.

Time to head home now, wherever home might be at the moment, and savor the day's adventures, your newly stored-away memories – and probably the pineapple cakes you've just bought as "gifts" for others. 🍍

8. Otaru Syphon Coffee provides a great atmosphere for relaxing and drinking coffee.
9. Lane & Trip is a mini-paradise for lovers of bicycling.
10. Xinzhong Park's shady scenery is perfect of a leisurely saunter.
11. Among the ceramic wares at 3,co are superb expressions of minimalist chic.
12. funfuntown sells smart-looking retro household furnishings, lighting, and small design objects.
13. Chieh Yun Hsuan brims with delicious iconic appetizers that prime the appetite.
14. At the panoramic view deck at Taipei Songshan Airport, watch planes take off and land while recalling your day-trip highlights.



Information

Fujin Street No. 108

富錦街No.108

Add: 108, Fujin St. (富錦街108號)

Tel: (02) 2546-6878

Caves Art Center

敦煌藝術中心

Add: 91, Fujin St. (富錦街91號)

Tel: (02) 2718-2091

DJ Art Gallery

典匠藝廊

Add: 118, Fujin St. (富錦街118號)

Tel: (02) 2716-2228

Fen Casa

Add: 43, Xinzhong St. (新中街43號)

Tel: (02) 2742-5819

Bonjour

朋廚烘焙坊

Add: 41, Xinzhong St. (新中街41號)

Tel: (02) 2528-9906

Debut 初試啼聲花坊

Add: 442-3, Fujin St. (富錦街442-3號)

Tel: (02) 2749-1458

Sonnenor Café

日光大道(富錦廚坊)

Add: 421, Fujin St. (富錦街421號)

Tel: (02) 2767-6211

Xinzhong Park 新中公園

Location: Corner of Xinzhong St. and Fujin St. (新中街、富錦街口)

Otaru Syphon Coffee

小樽手作咖啡

Add: 11, Lane 137, Sec. 5, Minsheng E. Rd. (民生東路5段137巷11號)

Tel: (02) 3765-2388

Lane & Trip 輪粹生活

Add: 425, Fujin St. (富錦街425號)

Tel: (02) 2753-5177

Daughter's Café 朵兒咖啡館

Add: 393, Fujin St. (富錦街393號)

Tel: (02) 8787-2425

3,co 當代瓷器傢飾

Add: 377, Fujin St. (富錦街377號)

Tel: (02) 8787-5271

funfuntown

Add: 2, Alley 1, Lane 359, Fujin St. (富錦街359巷1弄2號)

Tel: (02) 2766-5916

Fujin No. 3 Park 富錦三號公園

Location: 11, Alley 4, Lane 69, Sec. 5, Minsheng E. Rd. (民生東路5段69巷4弄11號)

Chieh Yun Hsuan 介云軒

Add: 5, Lane 69, Sec. 5, Minsheng E. Rd. (民生東路5段69巷5號)

Tel: (02) 2753-4213

Taipei Songshan Airport View

Deck 臺北松山機場觀景台

Add: 340-9, Dunhua N. Rd.

(敦化北路340之9號)

Tel: (02) 8770-3460

Hours: Daily 09:00~21:00 (free entry)

Please refer to the map provided on P.66.



Springtime Flower-Art Rambles

With the arrival of March, the cool of winter bids us adieu and the warmth of spring comes knocking. According to an old Chinese expression, "spring warmth flowers open" (春暖花開; *chun nuan hua kai*), meaning that with the warmth of spring flowers burst forth into bloom. The newly unveiling beauties of the season are always a big event, and for Taipei folk spring's arrival is not official until after enjoying a flower-appreciation outing. Up on Yangmingshan, Taipei City's "backyard garden," there's the annual Yangmingshan Flower Festival and Zhuzihu Calla Lily Festival, while down in the city center enjoy the big Taipei Bloom Art show at the EXPO Dome (爭艷館) in Taipei Expo Park (花博公園).



Grass Mountain Fragrance Yangmingshan Flower Festival



Once named one of Taipei's "10 Best Festivals" in a public vote, the Yangmingshan Flower Festival (陽明山花季) is the city's most iconic flower-appreciation event, attracting over 1 million visitors from all around the country each year.



The main viewing areas are the Cherry Blossom Forest (櫻花林), Fragrant Maple Forest (楓香林), Theme Garden (主題園), Flower Clock (花鐘區), Water Fountain (噴水池), Water Curtain Cave (水濂洞天), Azalea Garden (杜鵑茶花園), and Wang Yangming Statue (王陽明銅像). During the festival the Flower Clock area is decorated with tens of thousands of colorful, meticulously placed potted plants. It's little wonder that this is one of the most photographed spots in Yangmingshan during the festival.

The official theme for this year's event is "Grass Mountain Fragrance" (草山飄香): Grass Mountain (草山), the original (and still familiar) name for Yangmingshan, is combined with the concepts of Flower Fragrance, Tea Fragrance, and the "Fragrance of Stories," all interwoven into the activity program, which includes an exhibit of old photographs, tea tasting, flower appreciation, story-telling, and "time-tunnel" excursions, aiming to recapture the beauties and glories of yesteryear.

Yangmingshan is home to more than 2,400 cherry trees of splendid variety, and to over 8,000 azalea bushes. You'll also



see peach blossoms, camellias, Chinese hydrangea, and many other species. A great many of these mountain beauties are in glorious bloom during the flower festival, creating a feast for the senses.

The festival runs until March 18th, with a full program of cultural-arts shows. Note that at the weekends and on holidays during the festival traffic controls are in effect on the road up the mountain. Even after the festival is over, however the brilliant floral display continues on for some time, without the crowds.

The Taiwan cherry blooms from mid-February until the end of March, thus serving as the festival's grand finale. According to the Taipei City Parks & Street Lights Office, the best place to go to see it is the area around the Wang Yangming Statue in Yangming Park (陽明公園), where you'll find a thick grove of Taiwan cherry trees. The Oldham's rhododendron, which has been called the festival's "Best Actress," blooms from March through May, and is found in greatest concentration in Datun Nature Park (大屯自然公園) and along the Balaka Highway (百拉卡公路).

During the flower season day-trippers in Yangmingshan seem as countless as the flowers themselves, and there is significant traffic congestion. It's wise to use public transport. Note as well that Yangmingshan experiences significant - and rapid - changes in weather, so bring raingear and something warm.

1. Each year during the Yangmingshan Flower Festival many come for wedding shoots amongst the bright colors.
2. The Flower Clock in Yangming Park is a favorite photo backdrop.
3. During the March-May Yangmingshan Flower Festival, one of the stars is the Oldham's rhododendron.
4. A special highlight of the Zhuzihu Calla Lily Festival is the incorporation of cultural shows.



Calla Lily Fables Zhuzihu Calla Lily Festival

Some think the pure-white, delicate calla lily looks like a celestial fairy beckoning, and the fields of quiet, isolated Zhuzihu (竹子湖) are filled with them. Zhuzihu, or Bamboo Lake, is a basin high up on Yangmingshan; the lake drained long ago, and is now scene of the second big spring event on Yangmingshan: the popular Zhuzihu Calla Lily Festival (竹子湖海芋季). This year the festival runs for 38 days from March 23rd through April 29th. Stand back and savor the seas of white, or dive right in for a light fee, get your knees and fingers dirty, and pick your own.

According to the program organizer, the Beitou Farmers' Association (北投區農會), the blooming period of the calla lily is a long one, from January through May, peaking in March and April. The festival's scheduled run from late March to the end of April thus ensures visitors entire fields of this dainty white work of art. Zhuzihu's cool and moist climate makes it an especially inviting home for the calla lily, and this is in fact Taiwan's most important production center for the flower, providing 80% of blooms grown in the country. During the great spring bloom it seems the entire basin turns white, and the picture-perfect farms are a delight for artists and day-trippers alike.



The theme for this year's festival is "Calla Lily Fables" (伊·索的芋言). For the kickoff, the Beitou Farmers' Association has created a large welcoming display at the entrance to the Zhuzihu area, and on opening day, March 23rd, a troupe of college students will perform stories on themes taken from *Aesop's Fables*, and an awards-presentation ceremony will be staged for the annual Calla Lily Landscape Floriculture



5



6



7



8

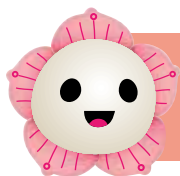


9

Design Competition. Among the many other fun-filled activities you can take in over the festival is the "Romantic Life – White Flower Love" Calla Lily Special Exhibit and colorful parades by Aesop's *Fables* characters. On weekends and holidays, in-depth guided tours of Zhuzihu are offered, and on weekdays there are full-day calla-lily eco-tour outings. For details, check the official festival website at www.callalily.com.tw.

Along the basin's loop road, the well-known Calla Lily Boulevard (海芋大道), you can visit the tourist farms and calla-lily fields that line both sides. You can pick your own calla lilies, and can also buy cut flowers, potted flowers, and all sorts of other potted plants, including herbs. This, as you can tell, is one vast, unified market, filled with color and hubbub. Around the area's periphery there are many streamside trails to explore, established by the city government, near the calla-lily plantations. The walks take anywhere from 10 to 50 minutes, and along the way there are good views at the calla-lily fields and farm terraces. The time needed and degree of difficulty is marked for each trail.

The Beitou Farmers' Association wants to specially remind visitors that because of its mountain location Zhuzihu is regularly shrouded in mist, can be rainy, and is generally 2 to 5 degrees lower than in the city, so be sure to bring a jacket or coat and rainwear.



Taipei Bloom Art A Grand Expo of Floral Artistry

The EXPO Dome (爭艷館) was one of the key exhibit venues for the extremely successful 2010 Taipei Int'l Flora Expo, creating some powerfully colorful memories. The spirit and color lives on at the site today with the staging of the big Taipei Bloom Art (2012花現臺北) show. As the event catch phrase says, the "EXPO Dome Blooms Again" (爭艷再現), with stunning floriculture artistry displayed that you'll scarcely believe could be real.

Taipei Bloom Art runs until April 8th, and before March 18th you can also enjoy the "Flowers and Myth" (花與神話) showcase. In Chinese legend, each flower had its own flower god or goddess, each with its own charming story. In the "Flowers and Myth" showcase there are 12 flower deity areas, each relating the charming legend

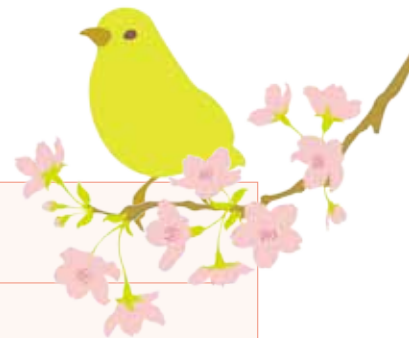


- 5-6. The Zhuzihu Calla Lily Festival attracts many up into the mountains to pick flowers.
- 7. The Calla Lily Festival lets people enjoy the beauty of flowers while soothed with gentle music.
- 8-9. Each year the Zhuzihu Calla Lily Festival has a new-theme image design competition.
- 10. The Flowers and Myth showcase presents tales of China's flower deities.
- 11. The EXPO Dome's Taipei Bloom Art show features stunning floriculture artistry.

of that god or goddess. Visitors entering this section are greeted with images of all 12 deities atop a sea of clouds and billowy flowers, and after receiving a welcoming blessing can even discover their specific deity, for each is associated with a different Chinese zodiac sign.

From March 17th until April 8th, enjoy the special "Flower Green Space" (花綠空間). This is an oasis for

those living day to day in the concrete jungle. This special place is one of several exhibits and floriculture arrangements that shows what our world could look like in the future - if we have the imagination, and the will, to make it happen. 🌸



Information

Yangmingshan Flower Festival 陽明山花季

Time: Until 3/18

Venue: Yangming Park 陽明公園

Tel: (02) 2861-6533 (Taipei City Parks and Street Lights Office, Yangming Station; 公園處陽明所)

(02) 2861-3861 (Yangming Park Visitors Center; 陽明公園遊客中心)

Website: 2012yms.com.tw

Transportation:

Flower Season Shuttle Bus: No. 126 from Taipei Main Station, No. 128 for MRT Shipai Station Route, No. 129 for MRT Beitou Station Route, No. 127 for MRT Jiantan Station Route.

Public Bus: No. 108, 109, 111, 130, 131 Shuttle, 230, 260, Red No. 5.

※On holidays during the festival traffic controls are in effect both ways on Yangde Blvd. (仰德大道); taking public transportation is strongly recommended.

Zhuzihu Calla Lily Festival 竹子湖海芋季

Time: 3/23~4/29

(flower bloom until end-May)

Venue: Zhuzihu, Yangmingshan 陽明山竹子湖

Tel: (02) 2892-4185, ext. 450
(Beitou Farmers' Association)

Website: www.callalily.com.tw

Transportation:

1. From Taipei Main Station, take bus No. 126 or 260 to Yangmingshan, then transfer to Small No. 9 or 131.
2. From MRT Beitou Station take Small No. 9 bus direct to Zhuzihu, or take No. 129 to Yangmingshan and transfer to Small No. 9 or 131.
3. From MRT Shipai Station take Small No. 8 direct to Zhuzihu (one bus per hour).
4. From MRT Jiantan Station take Red No. 5, 109, 111, 126, or 127 to Yangmingshan, then transfer to Small No. 9 or 131.
5. From the parking lot by the Flower Clock in Yangming Park, take No. 131, passing by Yangmingshuwu (陽明書屋) on the way to Zhuzihu; area stops: Hutian Elementary School (湖田國小) – Dinghu (頂湖) – Bachang (靶場) – Calla Lily Blvd. (海芋大道) – No. 2 Car Park (第二停車場).

※During the festival, in the Zhuzihu area one-way counter-clockwise traffic controls are in effect on holidays; the control area begins at the head of Hutian bridge (湖田橋), the hours are 09:00~17:00, with adjustments made in response to traffic flow.

2012 Taipei Bloom Art 2012花現臺北—爭艷再現

Time: Until 4/8; 09:00~18:00

Venue: Expo Dome, Taipei Expo Park 花博公園爭艷館
(beside MRT Yuanshan Station)

Tel: (02) 2182-8886, ext. 6040

Website: tba.ishow.gmg.tw

The 2012 Tianmu Water Trail Festival

A Celebration of Community and Mother Nature's Gifts



Eleven years ago, a group of Tianmu mothers inadvertently stumbled across a hidden local treasure, the Caoshan Water Supply System (草山水道系統). Coming together with other concerned groups, they established the Tsao-Shan ECHA (草山生態文史聯盟), calling on local residents to organize in order to protect this precious community resource. In 2003 the Tianmu Water Trail Festival (天母水道祭) was launched as a way to raise public awareness and generate support.

The Caoshan Water Supply System, set up during the 1895–1945 Japanese colonial period, was officially declared a city historical relic in 2004 – both Tianmu's first official heritage facility and the first water-supply system in Taiwan to receive such a designation. The system, completed in March 1932, has been in operation for 80 years and though the amount of water it supplies today has been reduced, this

amount still nevertheless satisfies a significant percentage of Tianmu's needs.

The Tianmu Water Pipe Trail (天母水管路步道), which lies along a section of the water-supply system, is the most popular hill-hiking and exercise trail with area residents. Bordered with dense foliage on either side, the steps are especially friendly in terms of ergonomics, and are comfortably wide because the trail originally accommodated porters with their shoulder poles. The black pipe beside the trail, made of high-pressure cast iron, stretches 647 meters, and you might even see people listening to the rumble and thunder of the spring water coursing through it on its way down the mountain.

The main foci of the Tianmu Water Trail Festival, which is aimed especially at local elementary and high-school students, are water resources, cultural history, and ecological education. This year the festival also celebrates the annual March 22nd United Nations World Water Day, calling for all of us to more deeply consider water-resources issues. This will be the tenth year for the festival, which has raised environmental awareness, brought the Tianmu community closer together, and become one of the area's biggest and most popular annual events.

The theme for this year's festival is Water and Food Security. Along the streets World Water Day slogans will be posted, urging the public to treasure and safeguard our food and water resources. On the morning of April 17th there will be a neighborhood prayer and blessing procession from Sanyu Temple (三玉宮), and students from Lanya Junior High School (蘭雅國中) will parade the festival's "Water Channel Head" (水道頭) mascot, symbolizing a never-ending natural water supply, and a team of guides in costume will lead visitors to Sanjiaopu (三角埔) Power Station, transforming Section 7 of Zhongshan North Road into a carnival scene. The Taipei Water Department will also open the No. 3 Water Source Spring and Water Pipe Bridge for a rare public visit. Both are official city historical relics, and visitors will be able



to inspect the facilities and taste the cleanest, purest water available in Taipei metropolis.

A related event occurs in the morning on April 14th, when students from both Tianmu Junior High School (天母國中) and Lanya Junior High will dress up as "Water Channel Sprites" and serve as guides, heading out to clean the local mountainside, conduct water-quality monitoring in Tianmu Park's (天母公園) Huang River (磺溪), serve as tour guides along the water-supply system, and handle other tasks, big and small. As the group has said in the past: "Serving as the Water Channel Sprites has helped us more deeply understand our community and made us care more deeply for our water-supply system and trail."

Water is one of Mother Earth's most precious gifts, intimately related to human existence, human survival, and the development of civilization, and our resources are now coming under ever more serious threat. One and all, local and foreign, are invited to join with Tianmu residents in their celebrations, at the same time witnessing their determination to protect their water resources—which are also yours. 🌊

1. The black trailside pipe at trailside is made of high-pressure cast iron, and many lie atop listening to the thrilling thunder of spring water rumbling along inside.
2. Lanya Junior High School students carry the Water Channel Head mascot, symbolizing a never-ending natural water supply.
3. A team of young guides, at fixed points, give background explanations.
4. Each year students from area schools eagerly dress up for the big festival parade.
5. Students carry placards urging everyone to treasure their clean-water supply.

Touring the Caoshan Water Supply Heritage Site (Caoshan Water Supply System)

Upper section of Yangmingshan's Qingchun Ridge (青春嶺)→Travel along Yangtong Highway (陽投公路)→Down Mount Shamao (紗帽山) to No. 3 Water Source Spring (第三湧泉)→Along Caoshan Water Pipe Bridge (草山水管橋; normally closed, open 4/14)→Along Tianmu Water Pipe Trail→Sanjiaopu Power Station (三角埔發電所) in Tianmu→Along Zhongshan N. Rd. → Yuanshan Reservoir (圓山蓄水池) in front of MRT Jiantan Station

Information

Water Pipe Trail Guided Tour

水管路步道導覽

Time: 4/14, 09:00~12:00

Venue: Along Tianmu Water Pipe Trail to No. 3 Water Source Spring

Tianmu Water Trail Festival Parade

天母水道祭踩街活動

Time: 4/17, 08:30~12:00

Venue: Tianmu Sanyu Temple to Sanjiaopu Power Station

Start Point – Tianmu Sanyu Temple 天母三玉宮 (intersection of Sec. 7, Zhongshan N. Rd. and Tianmu E. Rd. ; 中山北路7段與天母東路交叉口)

Finish Point – Sanjiaopu Power Station 三角埔發電所(end of Sec. 7, Zhongshan N. Rd. ; 中山北路7段底)

Tel: (02) 2826-2369

Website: www.tienmu.org.tw

Table Tennis in Taipei, Anyone?

1 When the sun refuses to come out and rain soaks your favorite outdoor sports venue, all is not lost. Table tennis is unaffected by inclement weather, and guarantees enough action, fast footwork, and sweat to make the most avid sportsman happy.

Table tennis has its origins in England. Europeans love tennis, but since the weather often refuses to cooperate, some students, acting on a whim, once decided to make a dining table into a miniature court, stacking books to serve as the net and using parchment to create paddles. The rest is history, and in 1988 table tennis became an Olympic event at the summer games. The game caught on in China early on, where it is called "ping pang ball" (乒乓球) in emulation of the sound of the ball bouncing and being hit, and this is the origin of the sport's alternative English name, "ping pong." In Taiwan and Japan the official term "table ball" was later adopted.

Table tennis is very popular in Taiwan. Many companies have their own societies, and every community activity center has facilities. Taiwan

players do well in the international arena, with three athletes, Chuang Chihyuan (莊智淵), Chiang Penglung (蔣澎龍), and Chen Chienan (陳建安) ranked in the International Table Tennis Federation's Top 100 as of January this year. Chuang took the men's title on the professional circuit's Chile Open 2011 with a dramatic come-from-behind reversal, and also took the crown at the Swiss Table Tennis Open 2011, lifting his international ranking from 14th to 11th in men's singles as of December 2011. He is currently Taiwan's best hope for a medal in table tennis at the upcoming London Olympics, which will no doubt create a further surge of interest in the sport's local popularity.

When practicing table tennis, it's important to concentrate on centralizing your energy and focus, identify the direction and spin of your opponent's strike, and keep your feet moving, maintaining balance through constant adjustments. Concentration, physical strength, and endurance are all equally important factors in attaining competitive success. There are no rules or limits as to a player's age, size, or body shape, so talent and diligence the only things that matter. Schools are therefore avid promoters of the sport, understanding that it's a great way for young students to develop dexterity, coordination, and overall health.

Key aspects to mastering table-tennis are the proper handling of the paddle and maintaining a center of gravity via good footwork. These put a full quiver of precision shots in your arsenal, including the strike, loop, chop, and block. Taipei City's 12 district sports centers all have table-tennis facilities, and offer training courses. If you've already attained a solid level of



proficiency, and want to take your skill to the next level through competition and learning from other skilled players, consider joining the regular series of competitions staged at Wanhua Sports Center (萬華運動中心). They're held on Sunday and Wednesday in the first and third weeks of every month. Even if you don't want to enter the fray yourself, you can learn a lot and have a lot of fun just watching the high level of skills demonstrated by the competitors. 🏓

Table Tennis Points to Note:

1. Warm up fully before playing, to avoid injury.
2. Be sure to keep the table surface dry.

1. Wanhua Sports Center holds monthly table-tennis competitions in which points are accumulated and players thus ranked.
2. All 12 Taipei district sports centers have table-tennis facilities and instructors.
3. Chiang Penglung (蔣澎龍) is another local star on the International Table Tennis Federation's Top 100 list of players.
4. Chuang Chihyuan (莊智淵) is Taiwan's best hope for a medal in men's singles at the upcoming London Olympics.



Information

Community Activity Centers 社區活動中心

Minsheng Community Activity Center 民生社區活動中心

Add: 8F, 163-1, Minsheng E. Rd. (民生東路163-1號8樓)

Tel: (02) 2747-2008

Hours: Tues~Sun 08:00~22:00;
NT\$100 entry brings 10 tickets, 2 tickets/2 hours/1 session

Datong Community Activity Center 大同區市民運動休閒中心

Add: 2F, 57, Changji St. (昌吉街57號2樓)
(Taipei City Datong District Office; 臺北市大同區行政中心)

Tel: (02) 2597-5323

Hours: 08:00~21:00 (closed Mon); NT\$100 entry brings 10 tickets, 1 ticket/1 hour/1 session

Wenshan Xingye Borough Community Activity Center 文山區興業里里民活動中心

Add: 10F, 160, Sec. 2, Xinglong Rd.
(興隆路2段160號10樓)

Tel: (02) 2761-8992

Hours: Every Tues 19:00~22:00;
fee: NT\$700 half-year membership

Neihu Incinerator Table Tennis Room 內湖焚化廠桌球室

Add: 290, Ankang Rd. (安康路290號)

Tel: (02) 2796-1833

Hours: Tues~Sun 08:30~12:00, 13:30~17:00,
18:00~21:00, free entry

Taipei City's 12 Sports Centers

Nangang Sports Center (南港運動中心)
ngsc.cyc.org.tw

Wanhua Sports Center (萬華運動中心)
whsc.cyc.org.tw (to join a competition, register in person, at www2.cybertabletennis.com/portal, or by telephone at (02) 2381-8878, ext. 221)

Zhongzheng Sports Center (中正運動中心)
www.jjsports.com.tw

Zhongshan Sports Center (中山運動中心)
cssc.cyc.org.tw

Shilin Sports Center (士林運動中心)
www.slsc-taipei.org

Neihu Sports Center (內湖運動中心)
www.nhsports.com.tw

Beitou Sports Center (北投運動中心)
www.btsc.org

Xinyi Sports Center (信義運動中心)
www.xysc.cyc.org.tw

Songshan Sports Center (松山運動中心)
www.sssc.com.tw

Daan Sports Center (大安運動中心)
dasc.cyc.org.tw

Datong Sports Center (大同運動中心)
www.taipeidt.com

Wenshan Sports Center (文山運動中心)
wssc.cyc.org.tw

Taipei's Lanes and Alleys — Oases of Traditional Culture



Han Lianglu 韓良露

Director General of South Village

Renowned gourmet travel writer, with more than 20 related books

“The way I see it, Taipei has blossomed into a beautiful mature woman of great grace and charm over the past decade.”

Han Lianglu (韓良露), a resident of Taipei for over 40 years, is a famed gourmet, travel writer, and self-declared “life artist” who seeks to live life to the fullest and make doing so an art form. She loves to bring foreign friends on journeys into the city's heart and character, which is found at its most beautiful and appealing down its lanes and alleys. “The city's rich, powerful cultural heritage is most alive and vibrant down these narrow arteries,” she states, “and here is where you best experience the charms of Taipei life and Taipei's people.”

Han has explored more than 100 cities around the globe, and she says that when she takes a city's pulse, judging the maturity of the local culture and the aesthetics of its everyday life and consumption, she doesn't just rely on visits to shops on its main thoroughfares and its big department stores. Instead, she much prefers exploring its side streets, within its mazes of lanes and alleys, where the veins of its cultural riches run deeper and thicker.

Citing the Left Bank of Paris as an example, she says that the most beautiful aspects of the Saint Germain quarter are found not on its high streets but in its seemingly haphazard labyrinth of twisting, zigzagging alleys and lanes and its squares, where you can buy hand-crafted oils, vintage postcards, antique silverware, seemingly hundreds of kinds of cheese, and other items of wonderfully unique individual and collective character. New York's SoHo, Tokyo's Kamikitazawa, London's Notting Hill these are the kind of places that best define a city's culture.

It is only those cities that are sufficiently mature, civilized, and enlightened that develop aesthetics in everyday life down alleys and lanes. In all such cities, these neighborhoods share similar special characteristics: most people who live there are native to the place, and



though travelers and busy tourists may come in to savor the local lifestyle, its character never changes as a result of these ephemeral impacts. These communities have built-in immunity to the tendency to become the tourist-trap showcases seen elsewhere.

Han loves how Taipei's different community mazes have such different personalities. In the oldest sections of the city such as Bangka (艋舺) and Dadaocheng (大稻埕), which both flourished in the 1800s, the lanes and alleys are filled with Han Chinese traditions and the everyday pursuits of common working folk. Herb Lane (青草巷), "Blacksmith Lane" (打鐵巷), "Spice Lane" (香料巷), "Cotton Prints Lane" (花布巷), and other such hidden spots are survivors from yesteryear and today still thrive, serving as treasure-vaults of the city's memories. Elsewhere, the Minsheng Community's cafes and appliance stores are evidence of the growing taste for leisurely and tasteful living in Taipei. Such places harbor characters of wonderfully different temperament, and show off the "live and let live" approach of Taipei folk that so endears them to visitors from abroad.

"The way I see it, Taipei has blossomed into a beautiful mature woman of great grace and charm over the past decade," she says, "and a main factor in this is the distinctive character and beauty of its blocks of alleys and lanes, such as my own Chengnan (城南) community, which has embraced a new, cultured lifestyle and is now perhaps Taipei's most sophisticated

arts-and-culture neighborhood." Chengnan folk like their shops a little more cozy, comfy, and chic, their merchandise to have a little more character, and the everyday objects they see to have a little more personality—such as the balcony of lush hibiscus beautifying a home across the way, the well-groomed white cat tiptoeing atop an enclosure wall, the thick coffee bushes laden with beans growing before a café.

Han, who has a severe and incurable addiction to travel, says that "Chengnan is the only place in Taipei where I get the wonderful feeling of being both at home and traveling at the same time." It's as though she lives within a large extended family, with all the comforts and blessings of a warm home, while also enjoying the thrills of travel each time she steps out the door, a sensation she never tires of. 📍

1. Taipei's lanes and alleys display widely varying personalities, demonstrating the city's diversity and openness.
- 2-3. Herb Lane by Longshan Temple (龍山寺) and Minsheng W. Road's (民生西路) Blacksmith Lane are splendid repositories of the city's memory.
4. The distinctive cafes found in the Minsheng Community demonstrate the search for quality slow living by Taipei's citizens.
5. Dadaocheng, thriving since the 1860s, is filled with important heritage architecture.
6. The highly varied shops in the Yongkang St. area each seek to be a cultural beacon.



Jean Kany-Bourcart
康博尚

Country of Origin:

France (Pays Basque)

Host, bilingual English/Chinese Taiwan travel show

SIT Product Supervisor, Lion Group

1. Time admiring the Grand Hotel's 14-storey palace-style design and resplendent Chinese-style lobby is time much enjoyed.
2. A good first step in understanding the city's character is an early-morning visit to 228 Memorial Peace Park to watch folk doing martial-arts calisthenics.
3. Taipei 228 Memorial Museum guides take pleasure in giving you detailed explanation of Taiwan's history.
4. The annual Taipei Lunar New Year Festival is a very fun, very busy time.
5. The "Hundred Yuan Stir-Fry Eatery" experience is unique, friends enjoying after-work gatherings at these entertaining eateries.

Tips from Enjoying Taipei from a Global Traveler

Qui est Jean Kany-Bourcart? Glad you asked. As a youngster he followed his father, an army doctor, around the globe. When a bit older, like many his age he was an idler and developed a love of sport and travel, and also did some modeling. As a young man he started working at Taiwan's Lion Travel Company (雄獅旅遊公司) as a tour-itinerary planner.

Nothing really surprising there. Since then, however, something most surprising has happened. Donning his hat as a bone fide, true-blue Frenchman, in the past few years he has emerged as a global travel guide for Taiwan adventurers, taking them on travels around the world.

Jean has now lived in Taipei for about five years, and has learned that Taipei is a "city without night," one that never seems to sleep, and a great place for young people to live. It's also what he calls a "moving" place, always developing, always improving, and Taiwan's people very friendly toward foreigners, the result being that it's full of experiences that move the visitor. And even though this city is constantly working to become more cosmopolitan and international, it saves and savors the best of its past, the beloved traditional customs and timeless cultural elements that bond a people together. He especially admires the old streets of Wanhua and Dihua Street, with their well-preserved old architecture and thriving old-time community spirit, and is impressed at how Taipei can be so modern yet at the same time so traditional.

Jean's current work is planning theme tours to the world: Provence bicycle tours, Mont Blanc treks, taking in French National Day (Bastille Day) military parades, and so on. But what if he was planning Taipei tours? For a one-day outing, he recommends an early-morning ride on the MRT Tamsui Line to Chiang Kai-shek Memorial Hall (中正紀念堂) to take in the view of people all over the grand plaza doing morning calisthenics, Chinese-style *taiji quan* (太極拳) and folk dancing. Next, visit nearby Taipei 228 Memorial Museum (台北二二八紀念館), where you learn about a key time in modern Taiwan's history. Since the museum is comparatively quiet, Jean says, the guides are willing to spend time telling stories and answering any questions foreign visitors may have. The truly grand Grand Hotel (圓山大飯店) is another must-see site. Also near the MRT Tamsui Line, this is a place steeped in history, and a site of great beauty, rising 14 stories in the Chinese-palace style and



harboring exquisite Chinese restaurants. At night the nearby Shilin Market calls, a wonderful vendor-stall emporium of traditional snack foods. Relax with a massage afterward, then head up Yangmingshan, looming above, for a soothing hot-spring soak to cap a rewarding day exploring Taipei's multi-textured lifestyle.

For a Taipei special-theme tour, Jean suggests that you “Come a week before Chinese New Year, when everyone's out getting all the needed New Year goodies and the air is filled with the New Year spirit. The Taipei Lunar New Year Festival (臺北年貨大街) arranged around this is great fun.” He says the Dihua Street “Big Street” is best of all, lined with open-front shops, packed with happy shoppers, and brimming with the joy of beloved seasonal traditions.

For backpackers, Jean recommends riding a motorcycle or bike for transportation, which immerses you in a unique local cultural experience hard (if not impossible) to find anywhere else. He likes to get on his bike and go for a ride about 6 or 7 in the evening, zipping through the Keelung Road (基隆路) tunnel between Zhongxiao East (忠孝東路) and Xinyi roads (信義路), where shafts of light like laser beams pulse from

the wall lights and the herds of cars zipping through create a great roar – to Jean the thrill-seeker, a surreal and exciting world right out of a Star Wars movie.

Taipei's superb culinary scene, Jean says, must be explored, no matter what the overall theme of your trip. The city's breakfast joints cater for every taste. Order a tasty green onion pancake (蔥抓餅) and you can choose whatever you want from a delicious list of ingredients. The “Hundred Yuan Stir-Fry Eatery” (百元熱炒店) experience is also unique, and not to be passed up; sit down with a friend for plate after plate of different inexpensive stir-fry creations, washed down with a cold beer. The atmosphere at these spots is busy and festive, a quintessential “authentic taste” of Taipei life.

Jean continues, telling story after story of long-to-be-cherished Taiwan travel experiences. Though an inveterate world traveler, there's a special place in his heart for this land, with which he is engaged in an ever more intimate love affair – making him a uniquely qualified Taipei travel ambassador. 📍



Tsuyoshi Segami 瀨上剛

Dental technician

Host of Tsuyoshi Segami in Taiwan travel show for JET TV

Author of *How do you do! I Am Tsuyoshi Segami* (我是瀨上剛 請多指教!)

1. The old Japanese residences along Qingtian Street demonstrate Japanese colonial-era construction techniques such as the timber pedestals which raise the structures, providing better ventilation.
2. One of Tsuyoshi Segami's favorite local travel recommendations for friends is a Yangmingshan scenery-enjoyment outing.
3. Beside Yuanshan Water Temple you can inspect part of the century-old Caoshan Water Supply System.
4. In Yangmingshan's Pingdengli area are clusters of Japanese purple maple; the young red leaves evoke the vivid colors of autumn maple season.

Fated to Fall for Taipei

His grandfather came to Taiwan to practice medicine, and his father was born here. As a result, from childhood one of Tsuyoshi Segami's (瀨上剛) most fervent hopes was to come to Taiwan.

In 1986 this dream became reality when he came to work at Taipei's Mackay Hospital in the Department of Dentistry. He thought he'd stay three years, but he's never left, falling in love with the warmth and hospitality of the island's people. He also found true love, marrying a local lady and thus into a local family, thereby becoming a "Taiwan son-in-law." Furthermore, and entirely by accident, he has become the host of a travel show. The forces of fate, it is clear, have conspired to make Taipei his home.

"The Taipei tourist spots I recommend to friends without fail are the hot springs, night markets, and Yangmingshan," he says. Segami is originally from Tokyo, and finds a lot of similarities between the scenic attractions of the two cities, notably the Baroque-style old streets and buildings and the fact that each is a flourishing international metropolis with well-developed rail and mass rapid-transit systems. One of the great differences between the two cities is that if you want to enjoy some authentic hot-spring bathing you have to travel three hours from Tokyo, but from downtown Taipei you need just 30 minutes to reach the hotels and resorts of Beitou and Yangmingshan, where there are high-quality springs, fees are reasonable, and the accommodations and services are first-rate.

Segami often heads up Yangmingshan to explore, particularly enjoying riding his motorcycle to the Pingdengli (平等里) area to enjoy the groves of Japanese purple maple there. When the leaves on the trees turn red around March and April, the scenery reminds Segami of his beloved autumn maple season. (Note: In Taiwan the red leaves of the Japanese purple maple are in fact only the newly formed leaves, which turn green before falling.)

Traveling around the island as host of a travel show has allowed him to explore just about every geographical and cultural nook and cranny. He finds that coming across old Japanese architecture and the food creations that the Japanese left behind cause him especially strong emotional reactions. "When I eat the famous *A-gei* (阿給) in Tamsui or the Taiwan-style tempura in night-markets," he says, "I always get a little homesick." *A-gei* is deep-fried tofu stuffed with flavored crystal noodles and sealed with fish paste.



1



2



3



4

Taipei is home to a treasure-trove of architectural works from the 1895~1945 Japanese colonial period, including Dihua Old Street (迪化老街), the Presidential Office Building, the Control Yuan building, and the Taiwan Museum (臺灣博物館). These provide warm, nostalgic links with Segami's homeland. He especially likes the old Japanese residences along Qingtian Street (青田街), splendid models of Japanese colonial-era construction techniques such as the timber pedestals which raise the structures, providing better ventilation in Taiwan's damp environment, and helping to keep them in good condition through the years.

Another of his favorite spots is the Yuanshan Reservoir in Shilin District (士林區), in the lower area of the grounds beside Yuanshan Water Temple (圓山水神社). This was built as part of the Caoshan Water Supply System set up a century ago, and has been

steadfastly maintained, still operating today as if just recently opened. The facility exhibits a combination of Japanese and Taiwanese construction techniques, and Segami is appreciative of how it has been cared for over the years, preserving another precious relic from an unusual era.

Segami says that his deep feelings for this land began building even before he was born, their roots lying in his grandfather's time on the island and in the many relics and vestiges of Japanese cultural influence left behind, creating strong links between his homeland and his adopted country, transcending time, space, and borders. 10

A Day in Tremendous Taipei: The City that has Everything!



Taipei is an almost ideal city for those who love music, foreign culture or the outdoors, so I consider myself extraordinarily fortunate to call the city home, since all three are great passions of mine! Visiting friends never cease to be amazed by the sheer variety of experiences possible during a single day in the capital, and although we take it easy most days, simply to avoid giving our guests a severe case of sensual overload, it's become a matter of principle to select at least one day during the visit to do a little of everything, just to demonstrate just how much this wonderful city has to offer.

The perfect day would have to start at a traditional Taiwanese breakfast shop: not one of the ubiquitous big chains, but one of those tiny, family-run places that do egg pancakes the old-fashioned way – thick and chewy, with lashings of thick soy sauce and home-made soybean milk to wash it all down.

Since I'm an enthusiastic hiker, my visitors are unlikely to be allowed to leave the island without getting out into the countryside a couple of times. And while during any visit to Taiwan, a trip down south to see the big sights is *de rigueur*, my personal favorite has got to be a hike around Four Beasts Mountains (四獸山), the steep, wooded ridge that rises right out of the new city center, above Taipei 101. Just fifteen minutes' walk from the MRT line, the hillside is crisscrossed by an amazing network of trails, from easy strolls beside wooded streams to strenuous and challenging climbs up sheer rock faces with fixed ropes. The hills are dotted with quaint old temples, colorful Daoist statues, and locals walking the dog, working out, or chatting with friends over a pot of tea. Meanwhile squirrels and birds flit through the trees overhead. A few hours exploring the hills is both a rich cultural experience and a refreshing walk through nature.

The district at the foot of the mountains is an extraordinary mixture of the traditional and the ultra-modern. Taipei denizens go about their business much as they have done for decades in the maze of narrow streets huddled at the foot of the ridge, lined with small shops and morning markets. Walk north a few blocks, however, and the cluster of huge department stores, linked by overhead pedestrian overpasses and towered over by Taipei 101 could be in a completely different city!

This being Taipei, I always seem to be busy, but music-loving visitors always seem to enjoy a concert at the National Concert Hall. Its excellent acoustics attract an extremely impressive range of world-class talent these days, while concerts given by local orchestras and soloists are generally of an excellent standard – plus the tickets are easier to get hold of! By the time the last encore has finished, it's already been a long day, but before heading home, a quick visit to the night market is an essential part of the Taipei experience. For most foreign visitors this means Shilin, but I'm more likely to be found around Ningxia Night Market, which does possibly the best oyster omelet in Taipei. A perfect way to end a day in this ever-fascinating, constantly stimulating city! 🍷

Richard Saunders is a classical pianist and travel writer who's lived in Taipei for the last eighteen years. His travels around northern Taiwan have been turned into five books, including a guide to Yangmingshan National Park and several volumes of hikes in the mountains around the capital city.

Discover Taipei

How to Talk to TAIPEI

Here are a few sentences in Mandarin Chinese and Taiwanese that backpackers can use while in Taipei to ensure smooth sailing.

Hello. Can you tell me how to get to this road?

Mandarin Chinese

你好，請問這條路怎麼走？
ni hao, qing wen zhe tiao lu ze me zou ?

Can you tell me how to get to the MRT station?

Mandarin Chinese

請問捷運站怎麼去？
qing wen jie yun zhan ze me qu ?

Can you tell me how much this is?

Mandarin Chinese

老闆，請問這個多少錢？
lao ban, qing wen zhe ge duo shao qian ?

Can you bring the price down a little bit?

Mandarin Chinese

這個可以算便宜一點嗎？
zhe ge ke yi suan pian yi yi dian ma ?

Excuse me, can you tell me how to get to this road?

Taiwanese

歹勢，請問這條路賣按哪行？
pai-i ce, qia meng ji tiao lo bie an na gya ?

Thanks very much, this is delicious.

Taiwanese

多謝，這個真好吃。
duo xia, ze-a zin ho jia .

New Bricks & Mortar Foundations for Taipei Fashion



1

Taipei clothing design has had a vigorous impact on the world stage in recent years. Among many examples, a stir was made by an elegant evening gown made by Taiwan's Jason Wu (吳季剛) for U.S. First Lady Michelle Obama; in 2009 Johan Ku (古又文) won top prize in the Avant-Garde design category at the Gen Arts Styles International Design Competition; and Chen Shaoyen (陳劭彥) designed clothing for the Icelandic diva Bjork.

To bring greater innovation, quality upgrading, and enhanced proactivity to Taiwan's apparel industry, the Industrial Development Bureau of the Ministry of Economic Affairs has commissioned the Taiwan Textile Federation (中華民國紡織業拓展會) to establish the Design Atelier & Jewellery Design Center (臺北服飾快速設計打樣中心) and Fashion Institute of Taipei (西園29服飾創作基地). Their mission is to improve Taiwan's market competitiveness and nurture local designers, stimulating new opportunities for the local fashion industry. The fashion design industry will also play a key role in the city's quest for World Design Capital status in 2016.

Design Atelier & Jewellery Design Center – Garment Proofing Atelier and Accessories Atelier

The Design Atelier & Jewellery Design Center was opened in 2011. Its role is to help the industry overcome difficulties and bottlenecks arising from the demand for small quantities of a large variety of clothing and accessory designs. There is great turnover and demand for rapid design development in the fashion industry, and the center helps local players stay in step with global fashion trends. The center accepts commissions from local designers and related industry concerns, engaging in new product development.



2



3

The Accessories Jewellery Design Center offers design and development services, and each year selects five designers for a special designer-in-residence program, providing a free work space, equipment, and domestic/international exhibit information. By giving support to designers in exhibits and competitions, the designers gain exposure on the international stage and also bring honor, and beneficial exposure to Taiwan. By way of example, the work of cutting-edge designer Ho Hsuanying (何宣螢) has been featured at the Schmuck Jewellery Show in Germany. Her works, which feature parchment as the key material, are durable and moisture-resistant, and have strong torsional elastic recovery, retaining their contours after repeated wearing. They are designed to allow wearers to piece together their own ensembles. Designers and related industry professionals who wish to better understand the center's services are welcome to call and make an appointment, during which they'll be given a dedicated tour.

■ Fashion Institute of Taipei ■

Previously called the Taipei Costume and Culture Center (臺北服飾文化館), the Fashion Institute of Taipei strives to be a "fashion fountainhead tree," serving as a hub for interior design, fostering the growth of creativity in the same way a tree blooms, absorbing the culture and energy of the local Wanhua apparel industry, and cultivating clothing and accessory design talent throughout Taiwan. It also seeks to create links and multiply the synergies between players in the commercial district and designers using the institute as their base, growing ever more branches and fostering new growth, providing feedback to the Wanhua apparel district and building a model of sustainable development for the Taiwan fashion-design industry.

Taiwan, long known internationally for top-flight fabrics and textile technology, has in recent years been hard at work cultivating its design talent, with many superb individual talents emerging. The goal now is integration, unlocking value all along Taiwan's fashion-industry production chain – the primary motive in establishing the Fashion Institute of Taipei. The management seeks to make the institute "sacred ground in Asian fashion creation," making Taiwan

the center of gravity in popular Asian fashion. The public is welcome to visit, and tours are provided.

The establishment of the Design Atelier & Jewellery Design Center and Fashion Institute of Taipei has married the inherent cultural characteristics of this city with fresh-faced originality, constituting a showcase display of its cultural-creativity prowess and the robust spirit behind its clothing and accessories design. And this creative-design energy extends far beyond the fashion industry, calling out to followers of fashion to get out there in the hunt for new treasures! 📍



4

Information

Design Atelier & Jewellery Design Center 臺北服飾快速設計打樣中心

Add: 5, Sec. 1, Roosevelt Rd. (羅斯福路1段5號)
Tel: (02) 2341-7251, ext. 2725
(Garment Proofing Atelier)
Tel: (02) 2341-7251, ext. 2712, 2713
(Jewellery Design Center)

Fashion Institute of Taipei 西園29服飾創作基地

Add: 9, Sec. 2, Xiyuan Rd. (西園路2段9號)
Tel: (02) 2336-7599, ext. 10
Hours: Mon-Fri 09:30~17:00,
Sat/Sun 10:00~19:00

- 1-2. The Design Atelier & Jewellery Design Center accepts commissions for new-product development from local designers and related industry concerns, doing computerized plate-making and garment proofing.
3. The Fashion Institute of Taipei seeks to be a "fashion fountainhead tree," fostering creativity growth in the same way a tree grows.
4. The Fashion Institute of Taipei nurtures Taiwan's clothing-design talent.
5. The Design Atelier & Jewellery Design Center helps local designers enter exhibitions and competitions.



5



Taiwan Excellence Pavillion: Showcasing the Best of Taiwan in Taipei City

Taiwan's design industry is one of great vitality, and its high-tech industry is a world power. To display some of its proudest achievements, in the last few years the Taiwan External Trade Development Council (TAITRA) has been setting up a "Taiwan Excellence Pavilion" (台灣精品館) at the biggest trade exhibitions in mainland China, North America, Europe, and elsewhere, highlighting Taiwan's innovative spirit in product design, and the response has been enthusiastic. Realizing that the country needs a permanent dedicated venue at home to showcase Made in Taiwan design breakthroughs, TAITRA, the Bureau of Foreign Trade of the Ministry of Economic Affairs, and the Taipei City Government have

joined forces to open Taiwan's first Taiwan Excellence Pavilion, located in the south wing of the Taipei Fine Arts Museum, which officially opened at the end of last year.

The pavilion explores the research, design, and marketing behind the most innovative products from Taiwan's brand enterprises, along with their success in satisfying changing market demands, requirements concerning environmental protection and energy conservation, and enhancement of cultural-creative soft power. The pavilion is itself a showcase of eco-friendly building methods, with the liberal use of glass walls, allowing natural light to stream into every corner.



5



6




7

The hall embodies both the emotional and the rational elements of design creativity in its various theme areas: the ICT section, sports and leisure section, cultural-creativity section, and short-term theme-exhibit section. All items in the last section are turned over every three months. On display at the moment are 142 products from 86 enterprises, the majority winners of a coveted Taiwan Excellence Award (台灣精品獎), complemented with 2011 winners of other prestigious international honors. Among the latter are winners of Germany's iF award for packaging design, including the “Steamer Set” (蒸鍋蒸籠) and the “Bamboo and Porcelain Series: Family Bowls” (竹瓷系列：一家人吃飯). The “Slide iPad Stand” (北歐風iPad鋁質置放架) won Germany's Red Dot Design Award while the “Taiwan Centennial Blessing Tea Gift” (福祿壽禧－百年賜喜茶禮包裝) and “Pennypad Electro Pain Relief Pad” (疲立寧Pennypad電子酸痛貼片) were winners of Japan's Good Design Award, and the “Tatung Electric Rice Cooker 50th Anniversary Classic Packaging Design” (大同電鍋五十週年經典版包裝設計) received an IDEA Award from the United States.

Perhaps the single most applauded product on show is the Luggie mobility scooter (電動代步車), from the FreeRider Company (自遊實公司). The product, which allows travelers with restricted mobility to more easily board an airplane, is the first such product to be granted approval by the international airline industry. This scooter can navigate through an airplane's doorway, down any aisle, and fold up for storage in just 10 seconds. Other hot products on display are the newest foldable road/off-road competitive bikes by Giant, Merida, Pacific Cycles, Volando, and other leading representatives of a land off called the “Kingdom of Bicycles.” All the high-tech inventions on display boast an unbeatable combination of chic design, recreational/entertainment value, and practical usage, and the pavilion's grand collection can be viewed free of charge, providing much inspiration.

According to Wang Chihkang (王志剛), TAITRA's chairman, “We fully expect that this facility will move beyond serving as a showcase of top-flight products and expression of culture to being a key local tourist attraction.” Adding to the venue's attraction is the presence of a refined Franz (法蘭瓷) operation, an iconic local brand combining high-end art and simple yet elegant dining.

Come one, come all, to this proud display of Made in Taiwan prowess. 

1. Taiwan's first Taiwan Excellence Pavilion permanent exhibit is inside the Taipei Fine Arts Museum south entrance.
2. The pavilion is a showcase for both the best and the newest from Taiwan's numerous top-flight bicycle makers.
3. The “Steamer Set,” winner of Germany's iF award for packaging design.
4. The pavilion's glass-curtain walls allow natural light to stream into every corner.
5. The Luggie mobility scooter, from the FreeRider Company, allows travelers with restricted mobility to more easily board airplanes.
6. The “Tatung Electric Rice Cooker 50th Anniversary Classic Packaging Design” received an IDEA Award from the United States.
7. The pavilion has a Franz operation, an iconic local brand, offering afternoon tea and such lovely Franz Collection ceramics as coffee-cup sets.

Information

Taiwan Excellence Pavilion 台灣精品館

Add: 181, Sec. 3, Zhongshan N. Rd.; inside south entrance, Taipei Fine Arts Museum
(中山北路3段181號; 臺北市立美術館南進門)

Tel: (02) 2585-1659, ext. 12

Hours: Tues~Fri, Sun 09:30~17:30; Sat 09:30~20:30
(closed Mon)

Guide explanation of all points starting at 10:00
(English, Japanese guides can be booked)

Greek Gods Live Again

Western Mythology and Legends: Selected Works from the Louvre Museum

The legendary residents of Mount Olympus are an endless source of fascination, peopled with immortals who pursue life much as we do, though writ much larger than ours, filled with love, desire, passion, sorrow, and revenge—their stories an endless source of inspiration for Western artists.

The special exhibition Western Mythology and Legends: Selected Works from the Louvre Museum (西方神話與傳說—羅浮宮珍藏展) is now showing at the National Palace Museum, focusing on the legends of ancient Greece. This grand show is a cooperative endeavour on the part of seven leading French institutions: the Musée du Louvre; Musée des beaux-arts de Tours; Musée des beaux-arts de Dijon; Musée des beaux-arts d'Arras; Musée Ingres de Montauban, Roubaix, La Piscine; Musée d'art et d'industrie André Diligent; and Musée national des Châteaux de Versailles et de Trianon. The range of artworks is expansive, with more than a hundred creations, including paintings, sculptures, frescoes, and implements.



This show is divided according to five major sections. In “Mythic Origins: From a Chaotic Universe to Mount Olympus” (世界源起) we see the transition from the empty, turbulent void to an emerging world with legendary Mount Olympus

merged with the heavens, a paradise populated with gods, demigods, and servants. In “Who's Who of Mythology: The Gods of Olympus” (神話風雲榜) we are introduced to the 12 main gods and their duties. “Love Among the Gods: Uncontrollable Passions” (衆神之

愛) regales us with legendary tales of godly love and desire, including the famed romance of Aphrodite and Adonis and his death. In “Heroic Epics: From Homer to Virgil” (英雄史詩) there are nearly 20 items on display, and in “Immortal Myths and Legends: From Antiquity to Modernity” (不息的神話與傳說) we see how artists throughout history have interpreted the great Greek legends, in particular viewing the interventions of the gods during the Trojan War.



2

Among the many great works on display is the oil painting *Apollo Revealing His Divinity to the Shepherdess Isse*, created in 1750 by François Boucher, who later went on to become the chief court painter for France's Louis XV. It tells the story of how Apollo disguises himself as a shepherd boy to pursue the shepherdess, in a resplendent setting in which love flowers between mortal and immortal.

Another highlight is *The Combat of Mars and Minerva*, painted in 1771 by Jacques-Louis David, Napoleon's chief painter. It recreates the battle between the two gods during the Trojan War, one fighting for the Greeks, the other for the Trojans, Mars, losing, is prone and is calling out to the approaching Venus for help. Though the painting depicts a war scene, it is exquisitely concerned with the aesthetics of feminine beauty.

Among the other artistic creations being showcased are ancient

Greek ceramics, frescoes from Pompeii, paintings and sculptures by great masters such as Jean-Auguste-Dominique Ingres and Antonio Canova,



4

1. The oil painting *Apollo Revealing His Identity to the Shepherdess Isse*, created in 1750 by François Boucher, later Louis XV's chief painter.
2. *The Combat of Mars and Minerva*, painted in 1771 by Jacques-Louis David, chief painter at Napoleon's court.
- 3-4. The stories of ancient Greek gods create endless fascination, and large crowds are coming to enjoy the wide range of paintings, sculptures, implements, and other works.

and other priceless treasures. The pantheon of Greek gods are both a font of inspiration for artists and a symbol of the passions and emotions that dwell within our mortal hearts; come to the National Palace Museum for a trip across time and space, to see what intrigue, mischief, and frolicking the Greek gods are up to. 10



3

Information

Western Mythology and Legends: Selected Works from the Louvre Museum

西方神話與傳說—羅浮宮珍藏展

Time: Until 5/14, 09:00~17:00

Venue: National Palace Museum, Library Building, Exhibition Area II (國立故宮博物院圖書文獻大樓一樓特展室)

Add: 221, Sec. 2, Zhishan Rd. (至善路2段221號)

Tel: (02) 2881-2021, ext. 2614

Website: mediasphere.tw

Dialogue between Nature and High-Tech Wonderland: New Contemporary Art from Australia



Ask people what impressions they have of Australia and most will mention such famous tourist attractions as the Sydney Opera House and the Great Barrier Reef. However, the unique, multidimensional artistic style of this land in the Southern Hemisphere, located not far at all from Taiwan, is earning its place as a must-mention.

The show *Wonderland: New Contemporary Art from Australia* (魔境：澳洲當代新藝術展) is introducing this new artistic frontier to a Taiwan audience. More than 20 of the most representative artists from the Land Down Under's younger generation of artists share the platform, presenting a brand-new set of "Australia impressions." Inspirational talents such as Julie Dowling, Daniel Crooks, and George Khut evoke this brave new world via more than 30 works of video, new media, photography, painting, textiles, design, and sculpture.

The show has been put together by independent Australian curator Antoanetta Ivanova, who has decided on four major foci. In "Paradise Lost" (失落的天堂) climate change, air pollution, and endangered plants and animals are explored; nature has been pushed beyond its limits, and man is at last forced to face the consequences of his actions, viewing the catastrophe of his now extinct natural paradise via video and audio recording.

In "Extraordinary Landscape" (不凡的景觀) a contemporary point of view is taken in presenting the continent's indigenous culture and its breathtaking wilderness scenery, turning back the veil on the mysteries and the hidden dangers of its vast interior. In the "Firsthand Experience" (親身的體驗) section there are a number of interactive installation works. In one, George Khut uses



1. *Morphogenesis Series*, by Jon McCormack, digital print: evolved digital flora generated by custom software.
2. *Lightcurve*, by Chris Henschke, video.
3. *Static No. 12 (seek stillness in movement)*, video, by Daniel Crooks.
4. *Sound Chamber*, participatory and networked media installation, by Kynan Tan, Amanda Morrison, Malcolm Riddoch, and Yvette Coyne.
5. Two works from Jasmine Targett, the glass installation *Atmosphere: And Your Troubles, Like Bubbles, Will Disappear*, and *Triptych: View from Earth, Ether, View from the Sun*, featuring glass objects.



biosensors and imaging devices to stimulate and detect the emotions of the viewer and changes in their heart rate, bringing them a kind of “out-of-body” experience that at the same time encourages them to listen to their body and meditate on how body and mind are inseparable from the surrounding world. Another work, by Kynan Tan, turns the viewer into a video DJ, with their body rhythms interacting with the work, and letting them post their own interactive video creation online to share with others.

In “Cross-World Creation” (跨界的創作) viewers can clearly see how the worlds of art and sci-tech continuously, seamlessly interact. Joe McCormack has created a computer program that allows his audience to watch plants grow and mature on-screen. Matthew Gardner brings colored light, robotics, and origami together in a wonderful fusion. Julie Ryder, who specializes in textile creations, has created exceptional work using electron-microscope and digital technology from the Australian Institute of Biology. Audio-visual artist Chris Henschke has used an artistic point of view to observe, analyze, and reconstruct a version of the Australian Synchrotron. Finally, glass artist Jasmine

Targett has cooperated with climate scientists to create a work that explores eco-environmental change.

This expansive show takes a critical perspective as it explores developments in biology and science along with issues of racial and cultural integration, reflecting the tremendous diversity and aesthetics that characterize contemporary art in Australia. The spirit of exploration, experimentation, and spiritual edification demonstrated by these artists brings the mystery and allure of the faraway Australian continent right to our doorstep. 📍

Information

Wonderland: New Contemporary Art from Australia

魔境：澳洲當代新藝術展

Time: Until 4/15

Hours: Tues~Sun (closed Mon); 10:00~18:00

Venue: MOCA Taipei (臺北當代藝術館)

Add: 39, Changan W. Rd. (長安西路39號)

Tel: (02) 2552-3721

Website: www.mocatapei.org.tw

The Headspring Festival – Fantasy within a Giant Magic Tent



1



2



3



4

- 1-3. *Meander*, with the gods and all living beings as its focus, features painting gods, dance gods, mirror gods, and other supernatural beings, and the Doomsday Ark is a giant tent with a fantasia-like performance stage.
4. Street performers, appearing as “human installation” artworks, perform around the plaza and interact with the crowds.

Doomsday theories for 2012 have been sprouting from various quarters around the world, and Huashan 1914 Creative Park (華山1914文化創意產業園區) has decided to do something about it. Lovers of art, freedom, and creativity are being called to gather at the park, where their collectively energy will be harnessed to adjust the Earth's vibes and avert the impending catastrophe.

Taiwan's interdisciplinary artist Chang Wang (張忘), deeply impacted by the creative power of the Festival d'Avignon, is seeking to stimulate the same kind of creative energy in Taiwan with the Headspring Festival (匯川藝術節), to be held at the park. He's erected a grand 8-meter-high tent where 30 performance troupes from Taiwan and abroad will give shows in a resplendent Cirque de Soleil-type setting. A total of 181 cross-discipline shows are scheduled in what is the biggest “arts festival in a tent” in Taiwan's history.

Many have enjoyed street artists, decked out in wild costumes, in the pedestrian precinct around VieShow Cinemas (威秀影城), wowing audiences with their incredible dexterity? These “human installation” works will be back at the Headspring Festival as part of the *Meander* (神遊記) attraction, where humans-as-art appear (in the guise of gods) on the streets, interacting with onlookers. Chang, who has 20 years of experience in stage design, is seeking to meld the stage with public-activity sites, making the giant tent a fantasia-

like stage platform called the “Doomsday Ark” (末世方舟) peopled with gods. The festival stretches over nearly three months, giving you plenty of opportunity to take in this most unusual spectacle.

The program also includes Headpring Theater's “Light Walkers” (光行者), an interpretation of the world seen through the eyes of children with autism and Asperger syndrome. In “The Harmonic Garden · Listening to Light” (泛音花園 · 聽見光), the angelic sounds of overtone singing accompany instrumental harmonies created with Tibetan singing bowls, Indian tamburas, and other instruments, immersing the audience in a highly unusual sensory space of ceremonial-style theatricality.

If you love art, the festival promises a rich dose of fun and unbridled creativity. The world may or may not end, but another lovely spring is guaranteed and now is the time to celebrate it!. 🎪

Information

2012 Headspring Festival 2012匯川藝術節

Time: Until 4/1

Venue: Huashan 1914 Creative Park
(華山1914文化創意產業園區)

Add: 1, Sec. 1, Bade Rd. (八德路1段1號)

Tel: (02) 2930-0754, (02) 2358-1914

Website: www.head-spring.com ; www.huashan1914.com

Art on a Monumental Scale— Art Revolution Taipei 2012

1. *Baby with Red Hair*, 2011, Philippe Pasqua (named France's best artist in 2011).
2. *Woman with White Cat*, 2011, Peter Harskamp.
3. *Yellow*, 2011, Todd Ford.
4. *Keep on Believing 2*, 2010, Hiroshi Mori.



With “Artists Are the Core” as its overriding focus, Art Revolution Taipei 2012 (A.R.T. 2012; 2012台北新藝術博覽會) will include time-tested and cutting-edge paintings, sculptures, drawings, installation works, photographs, and prints by some of the world's greatest talents. There will be 227 artists from 37 countries in attendance.


The official theme this year is “My Art · My Show” (我的藝術 · 我的個展). Such shows are usually gallery-oriented, but this one is curated around artists. Each artist is being made an individual brand, and the organizer has invited over a hundred highly renowned and influential collectors to attend. Each artist will be personally presented to the market and individually undergo the collectors' evaluation, bringing invaluable feedback that is personalized and immediate.

The big show will have 10 main exhibit areas. Among the grandest of these will be the A.R.T. Curatorial (大會策展) section, with international maestros invited from France, Spain, Italy, Belgium, and elsewhere. One of the star attractions of this section will be Philippe Pasqua, declared France's best artist in 2011, among the world's top 100 artists in annual income, and famous (or infamous) for his bold, direct renderings of flesh, skulls, and even butterflies.

In the International Contemporary Art (國際當代藝術) gallery, the work of artists from Europe, the Americas, Asia, Oceania, and Africa will be on display. The works

address the social issues of our day, and the creations by artists from Vietnam, Mozambique, and Cuba are vivid representations of national customs.

This will be the second edition of Art Revolution Taipei, and (as with the first) a key focus will be to shine a spotlight on both established Taiwan artists and on leading new stars just coming to public attention. Nineteen of these bright creative lights will be presented, and all will be available to talk with exhibition attendees about various aspects of their art such as the creative process and their sources of inspiration.

An important aspect of this important event is to make the exhibition itself a “monumental work of art.” The venue layout ensures that while participating artists and their individual works are front and center. The overall intention is to evoke the impression of walking into a grand arts palace, in which the artists and their artworks all contribute to the creation of a much larger whole. 

Information

Art Revolution Taipei 2012 2012台北新藝術博覽會

Time: 3/22~3/25

Venue: Taipei World Trade Center Hall 2 (臺北世貿二館)

Add: 3, Songlian Rd. (松廉路3號)

Tel: (02) 7743-7788

Website: www.arts.org.tw

Entry: NT\$100

2012
3/4

March-April
Arts Exhibition Calendar



Time Games: Contemporary Appropriations of the Past



Watch Me Move: The Animation Show



French-Salon Taiwan Artists Association 2012 Group Exhibition



Descriptions of Hearing

National Palace Museum

Tel: (02) 2881-2021

Add: 221, Sec. 2, Zhishan Rd. (至善路2段221號)

Website: www.npm.gov.tw

Until 4/23

A New Era for the Museum Collection: Recent Additions of Fine Painting and Calligraphy

Taipei Fine Arts Museum

Tel: (02) 2595-7656

Add: 181, Sec. 3, Zhongshan N. Rd. (中山北路3段181號)

Website: www.tfam.museum

Until 5/13

Journey through Jiangnan: A Pivotal Moment in Chen Chen-po's Artistic Quest

Until 6/10

Time Games: Contemporary Appropriations of the Past

National Chiang Kai-shek Memorial Hall

Tel: (02) 2343-1100

Add: 21, Zhongshan S. Rd. (中山南路21號)

Website: www.cksmh.gov.tw/eng/index.php

Until 5/6

Watch Me Move: The Animation Show

National Theater & Concert Hall

Tel: (02) 3393-9888

Add: 21-1, Zhongshan S. Rd. (中山南路21-1號)

Website: www.ntch.edu.tw

3/21~3/25

Konstantin Lifschitz 2012 Piano Marathon in Taiwan

3/24~3/25

NTSO Beethoven Series-VII【Peerless Bonaparte Era】

3/30~4/1

Alexander Gavrylyuk Piano Recital

Songshan Cultural and Creative Park

Tel: (02) 2765-1388

Add: 133, Guangfu S. Rd. (光復南路133號)

Website: www.songshanculturalpark.org

Until 6/3

Japan Eshi World

Huashan 1914 Creative Park

Tel: (02) 2358-1914

Add: 1, Sec. 1, Bade Rd. (八德路1段1號)

Website: web.huashan1914.com

Until 4/29

GeGeGe no Kitaro's Yokai Paradise

Until 5/20

Colorful eNPM – Four Seasons National Palace Museum

National Taiwan Museum

Tel: (02) 2382-2566

Add: 2, Xiangyang Rd. (襄陽路2號)

Website: www.ntm.gov.tw

Until 4/15

The Stories

Until 4/15

Impressions of Taiwan Railway in 1970s

Treasure Hill Artist Village

Tel: (02) 2364-5313

Add: 4-8, Aly. 37, Ln. 230, Sec. 3, Tingzhou Rd. (汀州路3段230巷37弄4-8號)

Website: www.artistvillage.org

Until 3/31

Civil Twilight – AIR Taipei Lantern Festival

National Museum of History

Tel: (02) 2361-0270

Add: 49, Nanhai Rd. (南海路49號)

Website: www.nmh.gov.tw

Until 4/1

French-Salon Taiwan Artists Association 2012 Group Exhibition

Digital Art Center, Taipei

Tel: (02) 7736-0708

Add: 180, Fuhua Rd. (福華路180號)

Website: www.dac.tw

Until 3/25

Descriptions of Hearing

Taipei Expo Park (EXPO Dome)

Tel: (02) 2881-4888

Add: 1, Yumen St. (玉門街1號)

Website: cheng-sing.com

Until 5/1

2012 Taiwan International Tourism Festival

Ketagalan Culture Center

Tel: (02) 2898-6500

Add: 3-1, Zhongshan Rd. (中山路3-1號)

Website: www.ketagalan.taipei.gov.tw

Until 4/29

How Cooked Are You? Ketagalan History and Culture Special Exhibition

Taipei World Trade Center (Hall 1)

Tel: (02) 2378-5691

Add: 5, Sec. 5, Xinyi Rd. (信義路5段5號)

Website: www.twtc.org.tw

3/30~4/2

Taipei Int'l Spring Travel Fair

4/6~4/9

2012 Softex Taipei (Taipei Spring Computer Show)

How To Get from Taiwan Taoyuan International Airport to Taipei

For traveling between Taipei and Taiwan Taoyuan International Airport, whether by inexpensive, high-quality coach, safe and fast taxi, or high-grade professional airport limo service, you're spoiled for choice in satisfying your particular time and budget.



The Transportation Map of Taiwan Taoyuan International Airport Terminal I & II

Taxi

Service locations:

North of the Arrivals hall of Terminal I and South of the Arrivals hall of Terminal II

One-way fare:

meter count plus 15%, with freeway tolls extra; average fare to Taipei around NT\$1,100.

Terminal I Arrivals hall taxi-service counter tel. no.:

(03) 398-2832

Terminal II Arrivals hall taxi-service counter tel. no.:

(03) 398-3599

Passenger Coach Bus

Service locations:

Southwest of the Arrivals hall of Terminal I (exterior vehicle pickup corridor) and Northeast of the Arrivals hall of Terminal II (exterior vehicle pickup corridor)

Coach-service companies:

Taiwan Bus Corp., Evergreen Bus, Free Go Express, Citi Air Bus, U Bus

One-way fare: NT\$85~145

Travel time:

40~60 minutes depending on routes (60~90 minutes for Citi Air Bus, which has more stops)

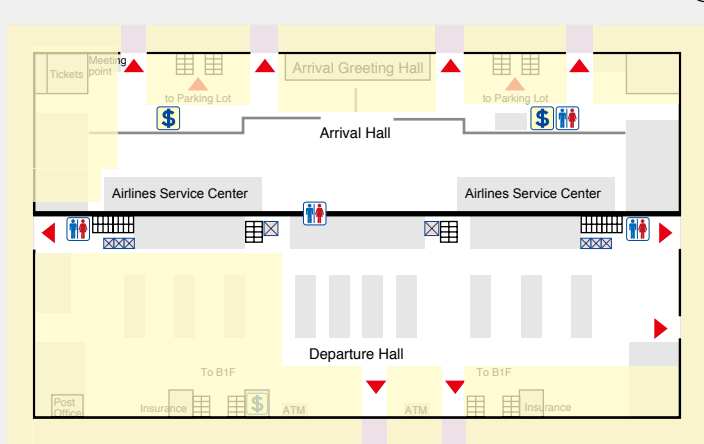
Schedule:

Every 15~20 minutes (Citi Air Bus 20~30 minutes)

Note:

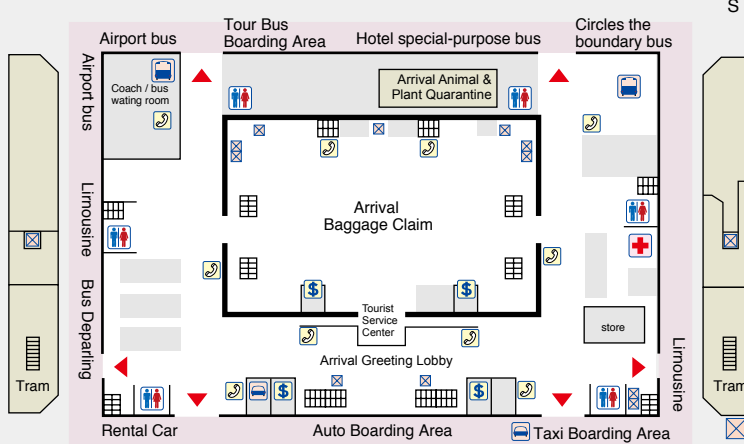
On page 65 of our Jan/Feb issue (No. 87), the word "Terminal" was mistakenly written as "Terminal" on the layout of Taiwan Taoyuan International Airport. We apologize if this caused you any inconvenience, and ask your forbearance; our editorial team will endeavor even more diligently to eliminate the occurrence of any such errors in future.

◆ Terminal 1 1F



Construction Temporarily don't open during construction

◆ Terminal 2 1F



【INDEX】 Outdoor Bus Station Taxi Station Toilet Healthy Center Telephone Elevator Moving Walkway Foreign Currency Exchange

NOTICE

In order to facilitate inquiries by the public, the city government has set up the 1999 Taipei Citizen Hotline. Whether by telephone, mobile phone, or Internet phone (public telephones and prepaid cellphone cards excluded), dial 1999 for free access. There is a time limit, with service personnel restricted to 10-minute service availability, and a 10-minute limit on call transfers. Citizens are asked to make the most efficient use of this resource, making all calls as brief as possible.

For more information, call 1999 or visit www.rdec.taipei.gov.tw

TAIWAN EMERGENCY TELEPHONE NUMBERS

Police / 110

Crimes, traffic accidents, and other incidents for which police assistance is needed

Fire / 119

Fire, injury or accident, or other urgent matters for which emergency relief is needed

Women and Children Protection

Hotline / 113 ext. 0

24-hour emergency, legal information, and psychological services for victims of domestic violence and/or sexual abuse.

NON-EMERGENCY TELEPHONE NUMBERS

Unit	Tel. No.
Taipei City Govt. Citizen Hotline	1999
English Directory Service	106
IDD Telephone Service Hotline	0800-080-100 ext.9
Time-of-Day Service	117
Weather Bureau	166
Traffic Reports	168
Tourism Bureau (MOTC) 24-Hour Toll-Free Travel Information Hotline	0800-011-765
Tourism Bureau (MOTC) Toll-Free Traveler Complaints Hotline	0800-211-734
International Community Service Hotline	0800-024-111
Tourism Bureau Information Counter, Taiwan Taoyuan International Airport	Terminal 1:(03)398-2194 Terminal 2:(03)398-3341
Government Information Office, Executive Yuan	(02) 3356-8888
Bureau of Foreign Trade	(02) 2351-0271
Taiwan External Trade Development Council (TAITRA)	(02) 2725-5200
Taiwan Visitors Association	(02) 2594-3261
The Japanese Chamber of Commerce & Industry, Taipei	(02) 2522-2163
Ministry of Foreign Affairs	(02) 2348-2999
Ministry of Foreign Affairs Citizens Hotline	(02) 2380-5678
Police Radio Station	(02) 2388-8099
English Hotline for Taxi Service	0800-055-850 ext.2
Consumer Service Center Hotline	1950
Bureau of National Health Insurance Information Hotline	0800-030-598 ext.3
AIDS Information Hotline	0800-888-995

Source for Above Information:

Information For Foreigners Service / Tel: 0800-024-111
Tourism Bureau, Ministry of Transportation and Communications
Tel: (02) 2349-1500

※ Entries in brown indicate service in English provided

LIST OF TAIPEI VISITOR INFORMATION CENTERS

Taipei Main Station Visitor Information Center

(02) 2312-3256 1F, 3 Beiping W. Rd.

Songshan Airport Visitor Information Center

(02) 2546-4741 340-10, Dunhua N. Rd.

East Metro Mall Visitor Information Center

(02) 6638-0059 Underground Mall 4-2, 77, Sec.1, Da'an Rd.

MRT Ximen Station Visitor Information Center

(02) 2375-3096 B1, 32-1, Baoqing Rd.

MRT Yuanshan Station Visitor Information Center

(02) 2591-6130 9-1, Jiuquan St.

MRT Jiantan Station Visitor Information Center

(02) 2883-0313 65, Sec. 5, Zhongshan N. Rd.

MRT Beitou Station Visitor Information Center

(02) 2894-6923 1, Guangming Rd.

Taipei City Hall Bus Station Visitor Information Center

(02) 2723-6836 6, Sec. 5, Zhongxiao E. Rd.

Plum Garden Visitor Center

(02) 2897-2647 6, Zhongshan Rd.

Miramar Entertainment Park Visitor Center

(02) 2175-3456 20, Jingye 3rd Rd.

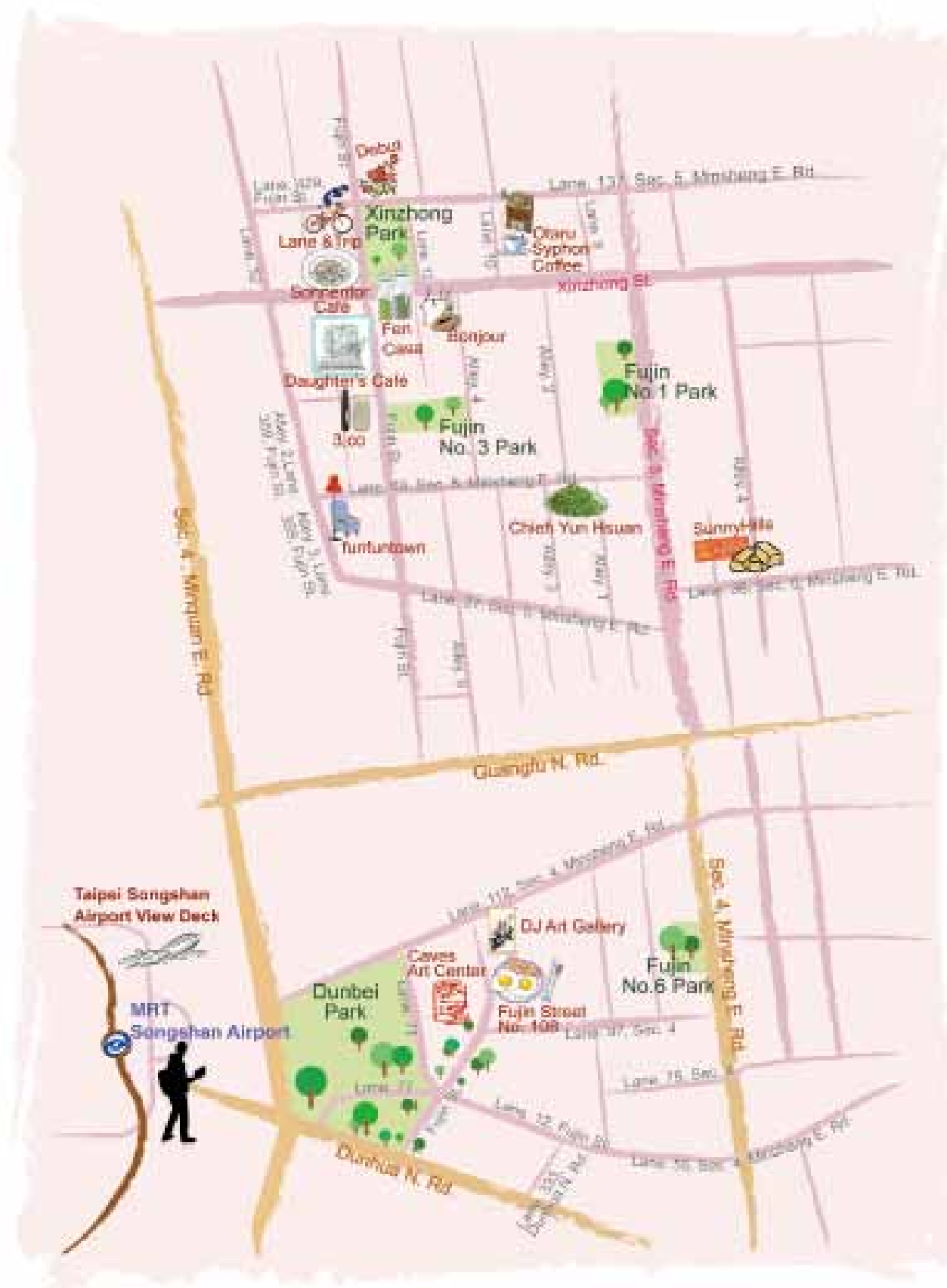
Maokong Gondola Taipei Zoo Station Visitor Center

(02) 8661-7627 2, Lane 10, Sec. 2, Xinguang Rd. (1F, Maokong Gondola Service Center)

Maokong Gondola Maokong Station Visitor Center

(02) 2937-8563 35, Lane 38, Sec. 3, Zhinan Rd. (Exit area, Maokong Station)

A Leisurely Tour of the Minsheng Community and Fujin Street Area (P32~P35) Map



Minsheng Community and Fujin Street Area (P32~P35) Tour Information



Minsheng Community and Fujin Street Area

Fujin Street No. 108

富錦街No.108

Add: 108, Fujin St. (富錦街108號)
Tel: (02) 2546-6878

Caves Art Center 敦煌藝術中心

Add: 91, Fujin St. (富錦街91號)
Time: (02) 2718-2091

DJ Art Gallery 典匠藝廊

Add: 118, Fujin St. (富錦街118號)
Tel: (02) 2716-2228

Fen Casa

Add: 43, Xinzhong St. (新中街43號)
Tel: (02) 2742-5819

Bonjour 朋廚烘焙坊

Add: 41, Xinzhong St. (新中街41號)
Tel: (02) 2528-9906

Debut 初試啼聲花坊

Add: 442-3, Fujin St. (富錦街442-3號)
Tel: (02) 2749-1458

Sonnentor Café 日光大道(富錦廚坊)

Add: 421, Fujin St. (富錦街421號)
Tel: (02) 2767-6211

Xinzhong Park 新中公園

Location: Corner of Xinzhong St. and Fujin St. (新中街 富錦街口)

Otaru Syphon Coffee 小樽手作咖啡

Add: 11, Lane 137, Sec. 5, Minsheng E. Rd. (民生東路5段137巷11號)
Time: (02) 3765-2388

Lane & Trip 輪粹生活

Add: 425, Fujin St. (富錦街425號)
Tel: (02) 2753-5177

Daughter's Café 朵兒咖啡館

Add: 393, Fujin St. (富錦街393號)
Tel: (02) 8787-2425

3,co 當代瓷器傢飾

Add: 377, Fujin St. (富錦街377號)
Tel: (02) 8787-5271

funfuntown

Add: 2, Alley 1, Lane 359, Fujin St. (富錦街359巷1弄2號)
Tel: (02) 2766-5916

Fujin No. 3 Park 富錦三號公園

Location: 11, Alley 4, Lane 69, Sec. 5, Minsheng E. Rd. (民生東路5段69巷4弄11號)

Chieh Yun Hsuan 介云軒

Add: 5, Lane 69, Sec. 5, Minsheng E. Rd. (民生東路5段69巷5號)
Tel: (02) 2753-4213

SunnyHills 微熱山丘

Add: 1, Alley 4, Lane 36, Sec. 5, Minsheng E. Rd. (民生東路5段36巷4弄1號)
Tel: (02) 2760-0508
Website: www.sunnyhills.com.tw

Taipei Songshan Airport View Deck 臺北松山機場觀景台

Add: 340-9, Dunhua N. Rd. (敦化北路340之9號)
Tel: (02) 8770-3460
Hours: Daily 09:00~21:00 (free entry)

Transportation Information

Fujin Street Shady Walk

MRT Wenhua Line to Songshan Airport Station→Walk along Sec. 4, Minquan E. Rd. (approx. 10 minutes)→left side of Dunhua N. Rd.→Lane 77, Fujin St., passing Dunbei Park (walk approx. 6 minutes)→Fujin Street No. 108

Fujin Street No. 108, DJ Art Gallery, Caves Art Center

Fujin Street No. 108→(directly opposite) Caves Art Center→(diagonally opposite) DJ Art Gallery

Fen Casa, Bonjour

From DJ Art Gallery, walk toward Lane 112, Sec. 4, Minsheng E. Rd., turn right (approx. 5 minutes)→Walk along Minsheng E. Rd., turn left onto Guangfu N. Rd. (approx. 5 minutes), turn right onto Fujin St. (walk approx. 20 minutes)→walk on right of Xinzhong St. to Fen Casa, Bonjour

Debut

From Bonjour go left (approx. 3 minutes)→Fujin St. (walk approx. 2 minutes) on right→Debut

Sonnentor Café, Xinzhong Park

From Debut go left, walk along Fujin St. (approx. 3 minutes)→Sonnentor Café (directly opposite)→Xinzhong Park

Otaru Syphon Coffee

Xinzhong Park→Down Lane 137, Sec. 5, Minsheng E. Rd. (approx. 5 minutes)→Otaru Syphon Coffee

Lane & Trip, Daughter's Café, 3,co

Proceed left from Otaru Syphon Coffee→Down Lane 137, Sec. 5, Minsheng E. Rd. (approx. 5 minutes)→Turn left at mouth of Fujin St.→Walk along Fujin St. on right to Lane & Trip (approx. 5 minutes)→Daughter's Café (approx. 3 minutes)→3,co

funfuntown

Go left from 3,co, walk along Fujin St. (approx. 5 minutes)→Turn left onto Lane 69, Sec. 5, Minsheng E. Rd.→funfuntown

Chieh Yun Hsuan

Go to right from funfuntown→Down Lane 69, Sec. 5, Minsheng E. Rd. (approx. 6 minutes)→Chieh Yun Hsuan

SunnyHills

From Chieh Yun Hsuan go right→Along Lane 69, Sec. 5, Minsheng E. Rd. (approx. 5 minutes)→Lane 36, Sec. 5, Minsheng E. Rd.→Turn left at second lane opening, proceed to SunnyHills

Taipei Songshan Airport View Deck

SunnyHills→To left along Sec. 5, Minsheng E. Rd. (10 minutes)→Dunhua N. Rd. on right (20 minutes)→Taipei Songshan Airport View Deck (3F)



貓空纜車
Maokong Gondola

臺北大屯山
Mt. Datun, Taipei

臺北捷運
Metro Taipei

臺北小巨蛋
Taipei Arena

關渡
Guzhou

陽明山
Yangmingshan

更多觀光資訊請上臺北旅遊網
www.taipeitavel.net

Enjoy the trip in Taipei

Tasting Taipei -- Living the LOHAS Way

西門紅樓
The Red House

大直橋
Dazhi Bridge