



JAN. / FEB. BIMONTHLY 2011

Exploring the New Visions of the Flora Expo

New Fields of Vision in the Flora Expo Global Garden Area

A Shuttle through Time The Flora Expo's Artistic Beauty

New Visions in Progressive Technology at the Flora Expo

The Flora Expo Shines, Drawing Bright Lights from Abroad

Preserving Memories in Architecture – Treasure Hill Artist Village

Year of the “Floral” Rabbit

–2011 Taipei Lantern Festival Set to Dazzle the City





JANUARY / FEBRUARY
BIMONTHLY 2011

DISCOVER TAIPEI is Available at

臺北市政府觀光傳播局

Department of Information and Tourism,
Taipei City Government
1999 ext.7564 4F 1 Shifu Rd., Taipei

臺灣桃園國際航空站一

Information Desk at Entry Lobby,
Taiwan Taoyuan International Airport
(03)398-2965 Dayuan, Taoyuan County

臺灣桃園國際航空站二

Tourist Service Center at Exit Lobby,
Taiwan Taoyuan International Airport
(03)398-2015 Dayuan, Taoyuan County

美國在臺協會

American Institute in Taiwan
(02)2162-2000
7, Lane 134, Sec. 3, Xinyi Rd., Taipei

遠企購物中心

Taipei Metro the Mall
(02)2378-6666 ext.6580
203, Sec. 2, Dunhua S. Rd., Taipei

國語日報語文中心

Mandarin Daily News (Language Center)
(02)2341-8821 2 Fuzhou St., Taipei

臺北市立美術館

Taipei Fine Arts Museum
(02)2595-7656
181, Sec. 3, Zhongshan N. Rd., Taipei

聖多福天主教堂

St. Christopher Catholic Church
(02)2594-7914
51, Sec. 3, Zhongshan N. Rd., Taipei

士林區公所

Shilin District Office
(02)2882-6200 ext.8725
8F 439 Zhongzheng Rd., Taipei

臺北士林劍潭活動中心

Shilin Jiantan Overseas Youth Activity Center
(02)2885-2151
16, Sec. 4, Zhongshan N. Rd., Taipei

捷運沿線各站

All Stations of MRT Lines

南港軟體工業園區

Nangang Software Park
(02)2655-3093 ext.124
2F 19-10 Sanchong Rd., Taipei

伊是咖啡

Is Coffee

臺北美國學校

Taipei American School
(02)2873-9900
800, Sec. 6, Zhongshan N. Rd., Taipei

世貿中心外貿協會

Taiwan External Trade Development Council,
TAITRA
(02)2725-5200 5, Sec. 5, Xinyi Rd., Taipei

臺北當代藝術館

Museum of Contemporary Art Taipei
(02)2552-3720 39 Chang'an W. Rd., Taipei

官邸藝文沙龍

Mayor's Residence Arts Salon
(02)2396-9398 46 Shuijoui Rd., Taipei

臺北國際藝術村

Taipei Artist Village
(02)3393-7377 7 Beiping E. Rd., Taipei

臺北二二八紀念館

Taipei 228 Memorial Museum
(02)2389-7228
3 Ketagalan Boulevard, Taipei

交通部觀光局旅遊服務中心

Travel Service Center, Tourism Bureau, M.O.T.C
(02)2717-3737 240 Dunhua N. Rd., Taipei

西門紅樓

The Red House
(02)2311-9380 10 Chengdu Rd., Taipei

光點臺北

SPOT-Taipei Film House
(02)2778-2991
18, Sec. 2, Zhongshan N. Rd., Taipei

臺北車站旅遊服務中心

Taipei Main Station Visitor Information Center
(02)2312-3256
1F(North-west end), 3 Beiping W. Rd., Taipei

亞典圖書公司

Art Land Book Co. Ltd.
(02)2784-5166 122, Sec. 3, Ren'ai Rd., Taipei

誠品書店各分店

eslite Bookstores

金石堂書店

Kingstone Bookstores

Taipei City Government

All rights reserved. Reproduction in any form
without written permission is prohibited.

Publisher / Hsin-ping Chao

Editor in Chief / Angel Chen

Deputy Editor in Chief / Joanna Kuo

Editors / Emily Wang

Pu Yuan

Integrated Marketing / Tzu-hsuan Huang

Yen-hsin Lee

Translator / Rick Charette

Artwork Designer & Production

WestBank Advertising Co., Ltd.

Tel: (02) 2723-3516

Fax: (02) 2722-4967

Photographer: Vincent Wang

**Department of Information and Tourism,
Taipei City Government**

4F 1 Shifu Rd., Taipei, Taiwan, R.O.C.

Tel: 1999 (outside Taipei City, dial

(02) 2720-8889 ext.2029, 7564)

Fax: (02) 2720-5909

Email: qa-emilywang@mail.taipei.gov.tw

ISSN: 17281741

GPN: 2008600233

中華郵政台北雜字

第 1376 號執照登記為雜誌交寄

Hope you enjoy reading this issue of DTB. If
you have any suggestions, please do not
hesitate to email or fax us.

Exploring the New Visions of the Flora Expo

As winter steps aside, spring flower shoots burst into bloom, as do the spirits of people drinking in the warming spring sun. The Chinese New Year, when one lunar year ends and another is given birth, is the most boisterous and heartfelt time of celebration in Taiwan, and in Taipei, the land's preeminent city, the celebrations are especially passionate this year. Added to the traditional New Year fun are two major events, the ongoing Taipei International Flora Expo and the centenary celebrations of the Republic of China.

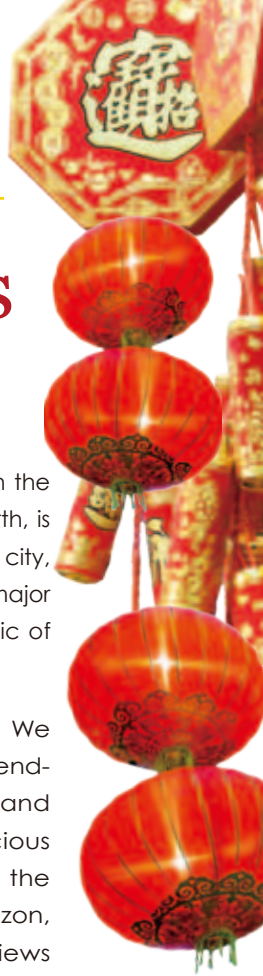
In this issue of Discover Taipei, the theme is “Exploring the New Visions of the Flora Expo.” We introduce the visionary concepts that have been unveiled at the expo's many sleek new trend-setting facilities, tackling them from three angles: the international characteristics, arts, and advanced technology. The exotic flowers decorating the Global Garden area, the precious antiques of the Taipei Story House, the frontier-blazing technology on glorious display at the Pavilion of Dreams—each is part of a once-in-a-lifetime event bold in vision, broad in horizon, and globe-straddling in potential import. We also bring you a report on the positive reviews given by international public figures and celebrities who have already made pilgrimages to the Flora Expo.

Among the many large-scale ROC centenary celebration events and activities are the 7th Chinese Character Festival and the Tour Taiwan – Feel the Centennial Excitement travel-promotion program. This will be a birthday bash you'd certainly be remiss to miss.

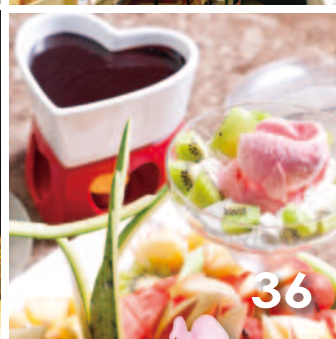
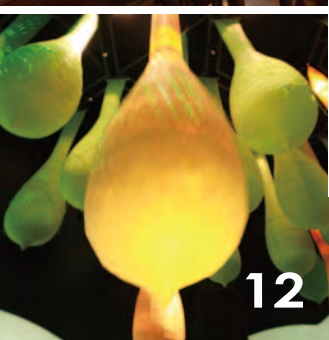
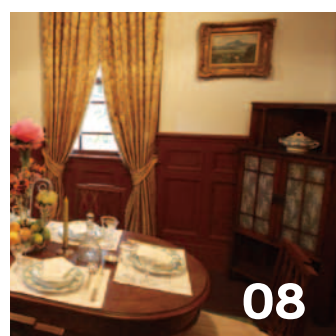
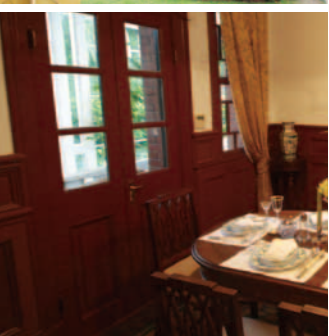
Today in Taiwan, there are two different Lunar New Year celebration styles. One is of traditional rituals and practices: stocking up on traditional New Year goodies in familiar old commercial streets, the New Year's Eve meal, and staying up late on New Year's Eve. The other is of modern twists: high-end gift items bought at big, fashionable malls and New Year's Eve meals at swanky hotels. This New Year is in February, so is the Western Valentine's Day, and we go international again by introducing some city sweet spots for a romantic chocolate fondue meal with your special someone.

Speaking of fine feasts, in the cold of winter one fine way to warm the heart is to savor a feast of the arts, and this season, the city has prepared an attractive buffet for you. Recommended is a visit to the recently unveiled Treasure Hill Artist Village, a historical settlement magically transformed and given a new artistic mission. And the 2011 Taiwan International Festival of Arts features dynamic stage works fusing the avant-garde with the traditional, presented by the world's leading talents.

Been wondering how to fill your leisure time in the first few months of the new year? The answers await you in the pages you are about to explore. Enjoy.



CONTENTS



04 Special Feature

- 04 New Fields of Vision in the Flora Expo Global Garden Area
- 08 A Shuttle through Time — The Flora Expo's Artistic Beauty
- 12 New Visions in Progressive Technology at the Flora Expo
- 16 A Day Trip Exploring Flowers, Arts, and Traditions
- 20 The Flora Expo Shines, Drawing Bright Lights from Abroad
- 22 The Taipei International Flora Expo — Cultural Shows with a Playful “Flower” Focus

25 Local Life

- 25 A Happy 100th Birthday to the Republic of China!
- 26 Traditional Chinese New Year Fun with Trendy New Twists
- 30 Taipei Welcomes Spring with a Great Bloom of Cultural Events
- 32 Year of the “Floral” Rabbit — 2011 Taipei Lantern Festival Set to Dazzle the City

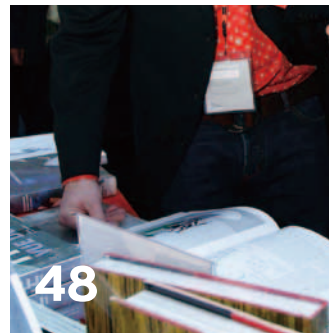
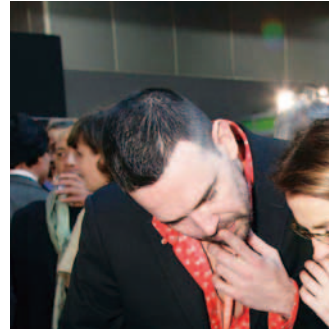
34 Chance Encounters with Fine Foods

- 34 Lucky *Niangao* to Bring in the Chinese New Year
- 36 Chocolate Fondue — For a Valentine's Day of Sweet Memories

40 Taipei Health and Recreation Tours

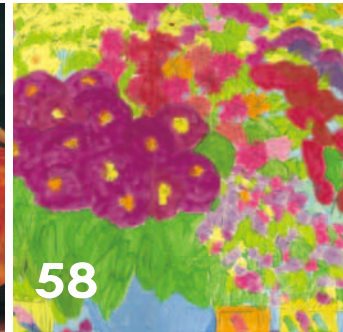
- 40 Preserving Memories in Architecture — Treasure Hill Artist Village

- 44 Old Places with New Faces —
**A Burst of Color and Energy Transforms
Wanhua's 406 Plaza**
- 46 Spring, Season of Dancing Cherry Blossoms
— **The Yangmingshan Flower Festival Is On!**
- 48 "Reading – The Path to Wellbeing" —
The 2011 Taipei International Book Exhibition
- 50 The Fastest Movement on Two Feet —
Hockey on Ice



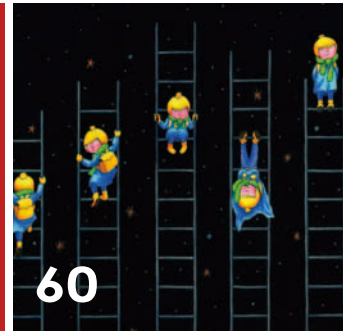
52 A Cavalcade of Arts and Culture

- 52 Glass Art Maestro Kenta Yasui —
**Congratulating Taiwan on the ROC's 100th
Birthday**
- 54 Merging the Cutting-Edge with the Tradition
— **2011 Taiwan International Festival of Arts**
- 56 Now Showing, in All Its Glory — **The Body
Beautiful in Ancient Greece**
- 58 "Plunderer of Blossoms" — **Walasse Ting
Retrospective Exhibition**
- 59 Knock, Knock! Opening the Door to Nature's
Beauties in Art
- 60 Take a Walk in Jimmy's World



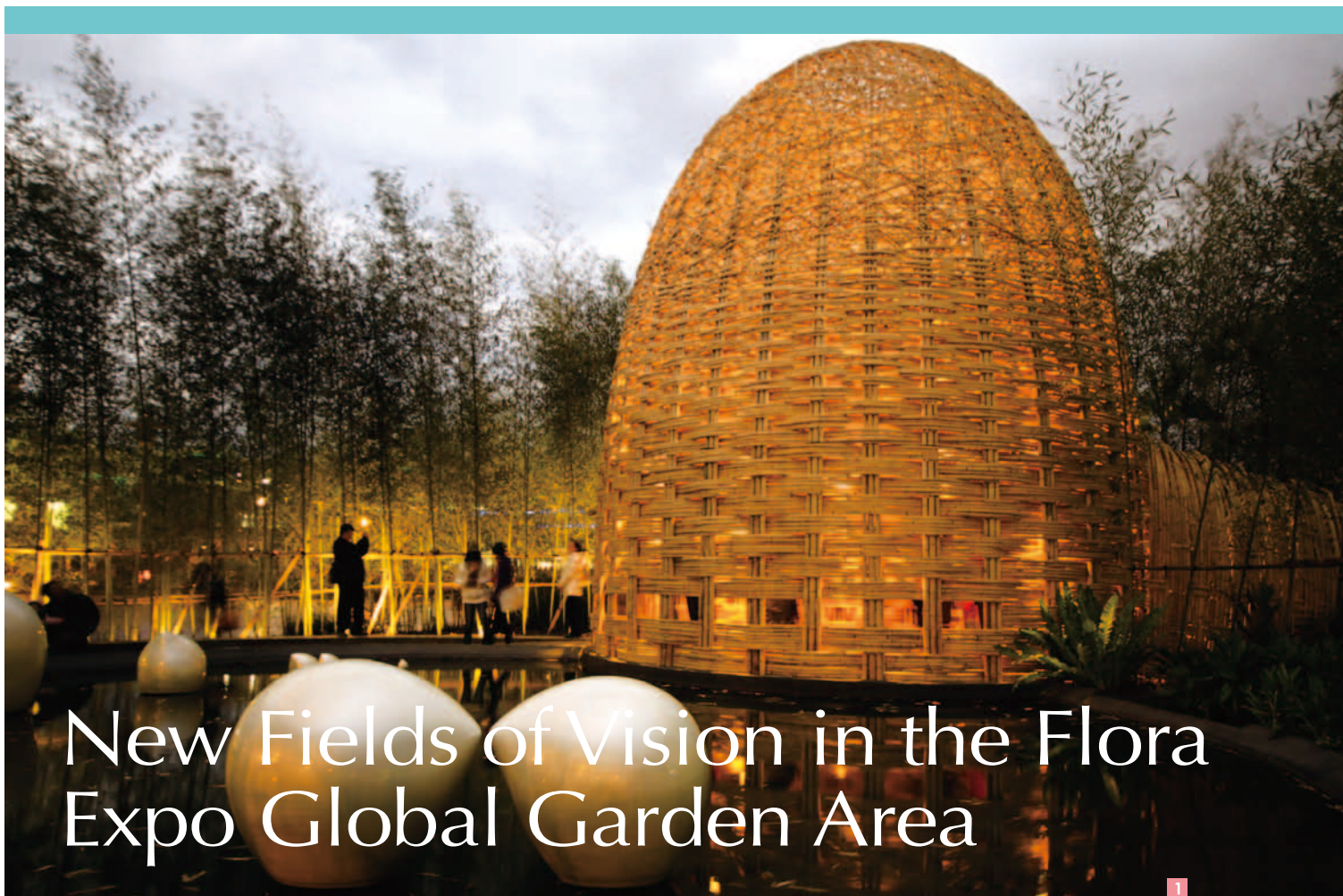
62 Handy Portable Information

- 62 January-February Arts Exhibition Calendar
- 65 Airport Transportation, Taipei
Tourist Centers, Maps, and Other
Practical Information



56

60



New Fields of Vision in the Flora Expo Global Garden Area

The world of the Taipei International Flora Expo is a world of pretty things, and vying for the title “beauty amongst beauties” is the Global Garden Area (寰宇庭園) in the Fine Arts Park Area (美術公園區), a grand and proud display of their best gardening and horticulture practices presented by 22 countries. Each land has constructed architectural works and installations in their respective garden that best exemplify its culture; in the Taiwan Garden, you will enter a giant woven-bamboo cage (bamboo, the ever-striving symbol of the Taiwan life-force), bending but not breaking. Greece presents an ancient Greek temple, Oman a scale-version replica of the famous mud-brick ruins of the Bahla Fort, the Philippines give you Intramuros, the Walled City of Manila, Bhutan offers the Medicinal Buddha and prayer bells, symbol of itself as the happy land of flowers, and Hong Kong introduces the rare Chinese white dolphins living in its waters, symbol of the spirit and will to live. Much of the plant life on display has been specially flown in from each homeland, making you feel as if

you're traveling the world and stepping into the back gardens of each country.

The Taiwan and Spain Gardens – A Spiritual Venture

To enter the Taiwan Garden, you will first pass through a meandering, bamboo-wrapped tunnel emerging into a large woven-bamboo cage, which is a tranquil granary-type space where woven bamboo and dancing sunlight are engaged in dialogue. Look up through the spherical atrium backdrop and you will see clouds flitting by, with the occasional low-flying airplane darting past. Upon leaving the coop-like cage, you will encounter a container-like shed, where the latest in high-tech is used in the cultivation of new breeds of orchid. Sit beside the placid pond here, listen to the gentle breezes swish through the areca palms, look down on the stone sculptures representing family and loved ones, you will realize the Taiwan spirit of life is well captured — “Reaching the



2



3



4



5

clouds, encompassing all lands” (上與浮雲，容納十方), symbolizing the broad acceptance and tolerance of the local people.

Spain's garden, entitled Captured Nymph, entices the eye from afar. The designer has used silk and wool to create a large rounded tent-like vault of luminous white, with nothing but a carpet of small white stones. “The vault like the silkworm cocoon, symbolizes how we are swallowed by the entanglements of our lives,” says designer Patricia Menese. She intends visitors to enter a space of deep and silent meditation when entering the cocoon, and to achieve harmony with the primal elements of our existence—minerals, waters, light, and air. As an analogy of life, the chrysalis works as a space for metamorphosis, and it is hoped that when emerging from the vault, life's troubles and fatigue will be cast off. The visitor feels a sense of liberation in the same sense as the butterfly emerges: flying off, free and liberated, toward boundless horizons.

1. Nighttime in the Taiwan garden, bamboo canopy reflected in the pond waters, gives rise to a special place of fairies and immortals.
2. The Greek garden is a fecund classical landscape of ancient Greek temple architecture melded with herb garden cultivation.
3. A scale replica of the famous Bahla Fort at the Oman Garden.
4. The Spanish garden has a large rounded tent-like vault, free of internal obstruction, releasing visitors from spiritual entanglements.
5. The use of the Medicine Buddha in the Bhutan garden engenders an air of harmonious tranquility.
6. The Hong Kong garden is an alluring landscape using dolphins and the architecture on both sides of Victoria Harbour.



6



The US and Hawaii Gardens – Luxurious Plant Life Reflecting the Richness of Local Life

A trip through the US garden is a trip through America's vast canvas of widely varying eco-environments, from desert and wetlands to plains and mountain ranges, displaying and explaining the plant life that has adapted to each. The garden has fully incorporated the 3R (Reduce, Reuse, Recycle) concepts being espoused by the Flora Expo. Its facilities are made of wood from forests harvested using sustainable practices, serving as a visual clarion call to the world to protect their natural resources and live in harmony with nature.

The title of the Hawaii garden is Hawaiian Tropical Paradise. Here you'll be struck by the vivid image of that iconic island bird, the flamingo, created by interweaving plants, and the signboard with "Hawaii" reflected in the waters below. The image of Hawaii as a lush land of bright colors is deftly captured and reflected back to you. In the islands' Garden of Eden enriched with botanical life, you'll see over 60 types of tropical plants including the Queensland fox-tail palm, Madagascar silver palm, and Sri Lankan fishtail palm spread through the garden. Front and center are also key native species such as laua'e, a well-known fern, and Ti leaf, used to make the grass skirts worn by hula dancers, and you can also enjoy a delicious display of the islands' ornamental pineapples. Be sure not to miss out on the hula-dancing

classes given each Saturday and Sunday (11:00~13:00, 15:00~17:00), where you'll be given a warm dose of the charms that come so naturally to this tropical paradise.

Thailand and Japan Gardens – Exquisite Landscapes as though Lifted from Paintings

In the Thai garden, the visitor is greeted by the grand Royal Barge, Suphannahongse or the Golden Phoenix, anchored placidly on peaceful waters, giving off a golden light. To the side stand imposing topiary sculptures of the iconic Standing Buddha and the sacred elephant. Other familiar elements from the graceful Thai world are crushed-stone pathways, iron trees, palms, orchid nursery, and small, carefully tended rice paddy, quintessential inhabitants of the classic Thai tableau. "The replica of the Royal Barge was created by master craftsmen back home and brought here for assembly; it symbolizes the royal house as the font of the Thai nation," says Setapong Lekawatana, director of Thailand's Director of Flower and Ornamental Plant Production Promotion Group. The topiary sculptures of the Standing Buddha and the elephant symbolize the timelessness and vitality of the Thai culture and people. Thailand is known for orchid production of splendid variety, the Vanda orchid admired and coveted around the globe. Within the garden, you'll enjoy the traditional Thai wooden dwelling with orchids spread throughout in the age-old manner, calmly demonstrating the Thai sense of serenity and closeness to nature.




At an angle across from the Thai garden is the Japanese creation, a string of three gardens with quintessential Japanese themes. One is designed by Ryuji Ando, who shows his sympathy for the recent Taiwan Typhoon Morakot victims and families throughout the garden. You are presented with an earthen wall, representing the temple, and from a damaged section atop, you see a wide expanse of soft-stone white sand representing the sea. On the right is a pile of rough stones, representing the mudflows and landslides nature throws at us, and on the left under a waterfall, a line of carp struggle against roiling waters rushing out to the broad expanse of the sea. The designer is expressing his hope that those facing natural disasters will always be able to find a portal to safety. In this same theme, before the soft stones are churned out into the sea, one sees a wooden carving of Guanyin bodhisattva, riding silently before, bringing calmness to the human soul.

Holland Garden—Building the Green City of the Future

In the Global Garden Area, it is the Holland Garden that draws the most happy visitors wielding cameras, for here is a kaleidoscopic praise to the tulip. Each and every bulb has been flown in from the Netherlands, and has been matched with a bright festival of traditional Dutch wooden shoes, called klompen, painted by local Taiwan artists. “The Netherlands is the kingdom of the flower, and we would not dream of missing out on the

Flora Expo,” says Hans Fortuin, Representative of the Netherlands Trade & Investment Office in Taiwan. Fortuin states that 80% of the world's flower production has its origins in the Netherlands, and the gross value of the country's annual flower exports is about six billion euros, a key driver in the local economy. The Flora Expo, he adds, presents a superb opportunity for the Netherlands to gain better understanding which flowers and plants the people of Taiwan are most keen on.

In addition to the flower fields of brilliant and vibrant colors, there are also a number of four-story buildings whose outer walls are covered in ivy and roofs covered in flowers and other plants, demonstrating the Green City philosophy held dear by the Dutch population. “Our advocacy of the green city is not just eco-friendliness, reduction in carbon emissions and energy use, but a green consciousness within the mindset of the public so that we never again have to live within cold jungles of concrete,” says Fortuin, adding that “the Netherlands and Taiwan are similar in essential ways, lands of small cities with many people.” The Flora Expo's Holland Garden is meant to be a showcase for how we can cast off the concrete-bound thinking of the past in search for the liveable green city. It also shows us how we can have “the right plant in the right place” — green infrastructure integrated with regeneration and development policy. 

7. The great beauty of classical Thailand is clear in the royal barge display, created by master Thai craftsmen.
8. Two flower-woven replicas of the iconic flamingo grace the Hawaii garden, warmly evoking a tropical-isle allure.
9. Sustainable materials have been used in the USA garden to show its commitment to energy-saving, eco-friendly practices.
10. In the Japan garden soft stones are spread to create the sea's surface, together with a wood-carving of the Guanyin bodhisattva demonstrating the idea of prayer and tranquility.
11. The Dutch garden is an oasis of tulips, green walls, and solar panning, promoting the Dutch belief in creating green cities.





A Shuttle through Time

The Flora Expo's Artistic Beauty

The Taipei International Flora Expo's effervescent aesthetics do not only show up in the floricultural arts and gardening landscapes on vibrant display. There is also great beauty on display in the expo's 14 exhibition pavilions. The Taipei Story House recaptures the aesthetics of the cultured life of a wealthy merchant in Taiwan of the early 20th century. The Pavilion of Angel Life features sweetly interwoven sight, sound, and space to bring to life an otherworldly garden of serene and ethereal pleasure. The Pavilion of Regimen is an oasis of delicately exquisite bonsai. Together, these and other such works of art celebrate the Chinese vision of the world we inhabit, and expose you to a subtle and novel field of artistic vision.



A Time Portal to Elite Living A Century Ago

Taipei Story House (故事館) is the only Tudor-style heritage site in the country. On the grounds of one of the Flora Expo parks, and in complement to the expo, it has been dressed up to display life in Taiwan a century ago, with a wonderful collection of more than 700 antiques in an accurate recreation of the lifestyle of the upper (mercantile) class. Exhibiting a fusion of Chinese, Japanese, and Western elements in the interior, you are greeted with the aromatic scent of Chinese cypress when you walk in. Floors are laid in Tudor style with red carpets featuring rose designs. On the first floor is a wide range of early-period posters for well-known tea brands, along with various tea containers—the merchant who built the house was a successful local tea merchant. You'll also see classical English chandeliers, a grand



old piano made in 1915, a century-old French sofa set sporting intricate carving, Tiffany stained glass lamp, an early 20th century Hepplewhite-design dining-room set, 200-year-old Royal Doulton bone china tableware, and many other precious heritage gems with well-pedigreed stories to tell.

Adding greatly to the aura of times gone by are prized, and priceless, furniture antiques being shared on request by such sources as renowned Taiwan singer Jeff Chang (張信哲), the family of Chen Chao-chun (陳朝駿), the builder of what today is the Taipei Story House, and a number of what are referred to as the “five great families of Taiwan,” whose power and influence extend back into imperial times. Up on the second floor is a classical Japanese tea-arts room, featuring antique Japanese tea sets and ikebana floral arts by celebrated masters. The study and bedroom spaces have also been decorated

with a writing desk in the Rococo style created a century ago in the coastal town of Lugang (鹿港), Victorian-style chaise longue, elegant cast-iron bed and black sandalwood dressing table with raden inlay, and many other exquisite items that well evoke the sumptuous daily existence of the privileged of yesteryear and the ostentatious extravagance practiced. On the walls, you'll also enjoy the numerous works of painting and calligraphy by well-known artists and other public figures in the late Qing/early Republic period.

- 1-2. The splendor of the days of the social elite is displayed in the Taipei Story House dining area, and in the bedroom, with an elegant cast-iron bed and black sandalwood dressing table with mother-of-pearl inlay.
3. The taste of yesterday's upper crust is on display in the living room of Taipei Story House, with classical English chandeliers, a plush century-old French sofa set, and Tiffany table lamps.
4. Even the refined bathroom area of Taipei Story House overflows with rich antique European trappings.





5



6



7

5. The Pavilion of Angel Life uses multimedia to express the theme décor of floral beauty, showing visitors how a space can be made a work of art.
6. The Pavilion's Body-Mind-Spirit SPA, where waterfall images run down white gauze walls, the worries of the world drifting away.
7. The Pavilion of Angel Life's Video Theater sports a 180-degree arc blended seamlessly with floor-projected visuals to create a soothing "living pool," with projections of images by leading artists of Taiwan's scenic natural landscapes and great flora riches—demonstrating the power of digital visual technique and artistry.
8. The Pavilion of Angel Life's central courtyard Wish Garden shows off the glories of aquatic plant life, the many embellishments engendering a fairyland ambiance.

Aesthetic Living that Embraces Heart, Soul, and Art

The Pavilion of Angel Life (天使生活館) in the Flora Expo's Xinsheng Park Area (新生公園區) is not like the other pavilions. The philosophy here is "slow living" rather than noise and bustle. The pavilion has three main areas: the Living Wisdom Center (生活智慧中心), Video Theater (影音劇場), and Body-Mind-Spirit SPA (身心靈SPA). The Living Wisdom Center is an expansive Zen-aura darkened space designed to calm the visitor, with ancient Chinese *qin* (琴) music and the sound of gurgling water wafting through the air. Before you unfolds the Video Theater in a 180-degree arc, which blends seamlessly with floor-projected visuals to create a soothing "living pool" (活水池), with projection of images shot by leading artists of Taiwan's scenic natural landscapes and her great flora riches. In your eight minutes here, you are indelibly introduced to the poetry on Taiwan's world of nature. During the Chinese New Year period in February, the theater will present digital virtual-reality projections of traditional Chinese heavenly lanterns (天燈), also called sky lanterns, along with floral fireworks film, both bright-colored events not to be missed.

The central courtyard Wish Garden (許願花園) shows off the glories of aquatic plant life. A curving bridge traverses the aquatic pond as if suspended in air, and recycled rainwater is used to create floating mists at regular intervals, engendering a fairyland ambiance. Images of cascading waterfalls flow down the surrounding four walls, enticing you to ascend to the second-level Body-Mind-Spirit SPA, where waterfall images run down white gauze backdrops and classical Chinese zither music dances in the background, wrapping you up safe and sound in a warm Zen blanket, with the worries of the world drifting away atop the soothing musical notes.



8



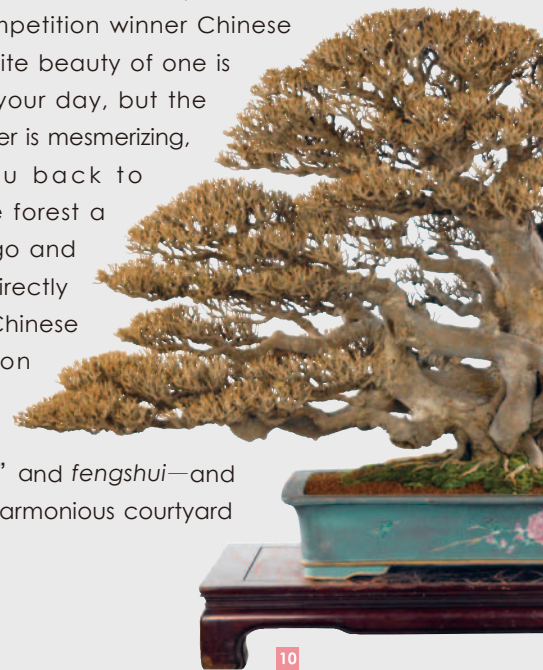
Taiwan's Century Bonsai Art

It's truly a wonder to behold. By the foot of Yushan (Mt. Jade) in Taiwan's soaring central mountains stands a giant Chinese juniper baptized 3,000 years ago, bent into a winding bow shape by the handiwork of century after century of wind, rain, cold, and heat but still standing proud and strong. Beside it is a gnarled, wind-weathered white She-Li Trunk. You can see this same miraculous scene without the need to go trekking in the high mountains—simply visit the Flora Expo's Pavilion of Regimen (養生館), where a majestic Chinese juniper the same as that on Yushan is on display, graced by a She-Li Trunk that looks almost the same. The big difference, however, is that this juniper stands just 88 centimeters tall. The branch and leaf clusters are also cloud-shaped and in much denser concentrations, pointing 45 degrees toward the sky. Crowds look on and marvel at the possibility of the existence of such a perfect work of art, and it is clear why this Yushan reproduction has been crowned Taiwan's greatest bonsai work three years in a row and also took the prestigious President's Award in the 2009 Asia-Pacific Bonsai and Suiseki Exhibition.

The core Pavilion of Regimen theme is healthy living and centennial bonsai, placing on vibrant display of the venerable Taiwan bonsai-cultivation culture and making clear how progressive are the artistry and cultivation skills brought to this passion. The bonsai arts, originated in China, have a thousand-year history; proper cultivation requires infinite patience and time. Young, raw, nude

trunks are taken and carefully “sculpted,” and the final artwork often taking many decades to finish—in some cases more than a century. The emphasis in bonsai modeling is on composition and visual harmony, and to achieve this, the bonsai author will carefully reflect on the balance and bearing of a great many giant thousand-year-old trees before deciding on his own canvas. Success, it can well be imagined, is a rare achievement in this field of art.

All of the magnificent bonsai on display have been graciously presented for viewing by Taiwan creators and collectors, with over 40% over 100 years of age. Enjoy the thickly coiled, oblique She-Li Trunk of the Headache tree premna, the elegant, tiny fluttering branch-and-leaf clusters of the Linden Hibiscus, the soft and supple strength and graceful posture of the West Indian Cherry, the cliff-hanging Common Juniper, and the recent bonsai-competition winner Chinese Juniper. The exquisite beauty of one is enough to make your day, but the effect of all together is mesmerizing, transporting you back to a “small” Chinese forest a thousand years ago and transporting you directly into the world of Chinese artistic conception and the Chinese philosophy of the “five elements” and *fengshui*—and their place in the harmonious courtyard garden. 10



※ For English or Japanese tours, visit the official website or call (02) 2182-8886, ext. 7546 or 7552; advance booking is required.

※ Taipei Story House and the Pavilion of Regimen require reservation voucher.

9. It's clear why this bonsai reproduction of a famous Yushan giant tree was crowned Taiwan's greatest bonsai three years running and won the President's Award in the 2009 Asia-Pacific Bonsai and Suiseki Exhibition.

10. The majestic harmony of the elegant miniature fluttering branch-and-leaf clusters of the Linden Hibiscus.

New Visions in Progressive Technology at the Flora Expo



1



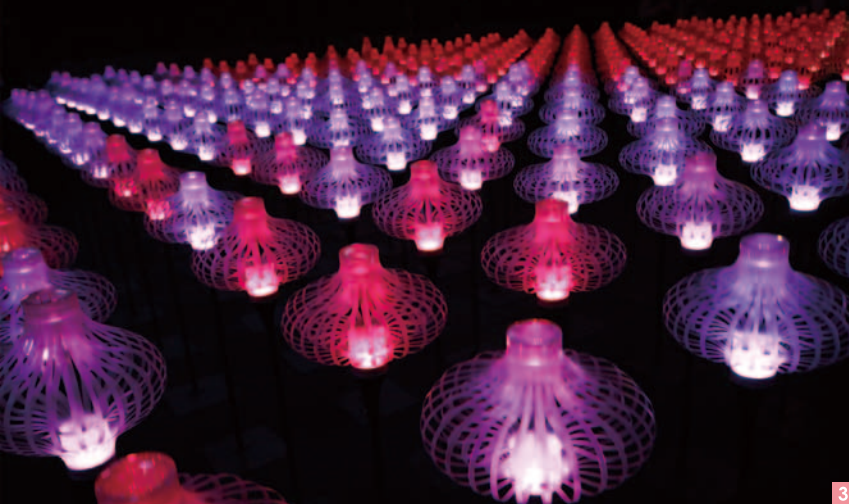
2

The use of boundary-redefining high-tech prowess at the ongoing Taipei International Flora Expo is the most expansive and progressive in the expo's history. On display are the most advanced vanguard ideas in Taiwan thinking, the smartest in green technology, and the best in modern technique being used in the island's agriculture and floriculture industries, and both culture and arts placed on display using path-breaking interactive technology.

At the EXPO Theater (真相館) in the Yuanshan Park Area, see special-effects wizardry put together by top Hollywood talent, the result is the world's first

3D anime film on the subject of environmental protection. Experience the powerful impact of the Typhoon Morakot disaster of 2009 by watching the rocks and mudslides, the destruction of homes, and entire villages submerged under mudslides. As the sad story unfolds on the giant five-story-high screen, the theater itself convulses around you.

At the Pavilion of New Fashion (流行館), the walls are made of 100% recycled PET bottles transformed into sturdy bricks using advanced physics and optoelectronics technology. The bricks have great insulation and can withstand the forces of typhoon and fire. The pavilion is also a model for other trailblazing green technology, with rainwater extensively recycled for secondary use and with maximum use of natural sunlight, decisively reducing energy costs. This pavilion is recognized as the most eco-friendly among a small forest of advanced green Flora Expo buildings. Other thought-



provoking displays of the new visions being explored in Taiwan high-tech are awaiting your arrival at the Pavilion of Dreams (夢想館), Pavilion of Future (未來館), and Celebrity's House (名人館).

Taiwan's Vanguard High Technology in Full Realization

The pavilion that is leaving visitors most in awe is perhaps the Pavilion of Dreams, where 30 different types of advanced high-tech are used to recreate nature in its virtual form. There are five separate exhibit areas, each featuring distinctive high-tech shows and interactive installations. This, not surprisingly, has made it the most popular expo facility. As you step into the cavernous lobby area, you are greeted by a giant six-meter mechanized flower; the flower blooms and closes in symphony with 34,000 surrounding speakers made of wafer-thin paper that play music and change color in rhythm. Six glorious scenes honouring Mother Nature are recreated, ranging from dawn through deep night.

When you enter the Pavilion of Dreams, you are given a bracelet to wear. This bracelet detects your position in each exhibit area, enabling interactive interaction with your created environment. In Hall 1, move around

before the innovative vertical and interactive naked-eye 3D monitor display to view the plants endemic to Taiwan. Hall 2 offers a floral labyrinth featuring 18 intelligent electronically controlled LCD glass panels, projecting a fairyland of ever-transforming holographic imagery. Hall 3 is home to a 360-degree circular theatre that allows visitors to experience the fast-moving scenes and images as well as the interactive fun through the breath and heartbeat sensors. In Hall 4 is the amazing Florabot (花械花開) area, where high-tech controls are used to make the flowers dance and sway in rhythm with accompanying music and lighting. Before leaving the pavilion, visitors can use their intelligent RFID bracelets to print out their own unique flower memento as a way to remember their time in this very special place.

Intelligent Architecture and Floriculture

The Pavilion of Future in the Xinsheng Park Area is a platform for demonstrating Taiwan's agricultural technology. It has been designed as a large-scale greenhouse, demonstrating the environments of different terrains and latitudes and showing off the plant life of the globe's tropical through frigid zones

1. In Hall 2 of the Pavilion of Dreams you are magically transformed into an insect, getting to know "up close and personal" how insects interact with plants.
2. At the Pavilion of Dreams visitors wear "dream bracelets" that contain a special "seed," and after interacting with all the pavilion's high-tech wizardry they slowly transform into unique flowers.
3. The amazing Florabot sea of flowers area sways with music in a magical demonstration of the aesthetics of science working with art.
4. Stand before the vertical naked-eye 3D monitor display for a powerful demonstration of innovation and interactive technology.
5. In the Pavilion of Future self-activating irrigation and natural-light systems display the attractions of home life down the road.





6. "Preserved Fresh Flowers," created by a unique technology, on display at the Pavilion of Future. After going through a special process, real plants are "immortalized."
7. Inside and outside, intelligent technology has been used to create an environment that satisfies all needs of the resident plants.
8. Using myriad trailblazing technologies and construction methods, the environments of different terrains and latitudes have been recreated to show off the ecologies and special characteristics of many different plants.

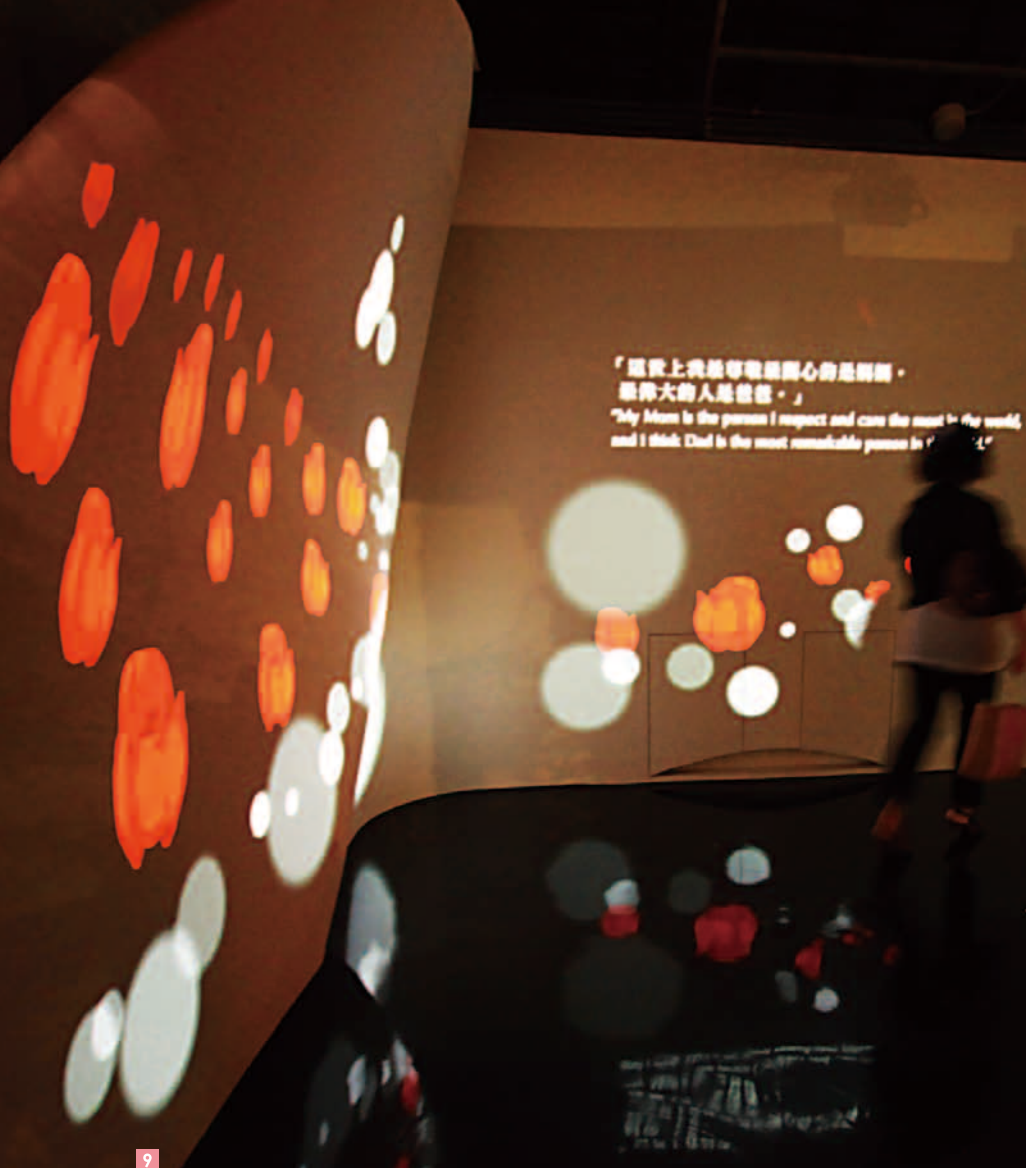
to visitors in one easy meander. You'll be able to get up close to about 1,700 different plant varieties, and to keep them all in best condition over the course of the 171-day expo, intelligent technology has been wielded to closely model their natural growing environments. For example, natural ambient light has been maximized ensuring the plants get the UV rays needed, and effective radiant-heat barriers are in place. Electrical power is generated via solar panels, operated in coordination with geothermal cooling systems, mist spray, water walls, and skylight use. An intelligent temperature-control system enables precision monitoring and adjustment of individual room conditions.

In addition to its smart greenhouse-garden facilities, the Pavilion of Future also features a "Future Garden Area" (未來庭園區) where you can catch a glimpse of future living with the marriage of agriculture and high-technology. On display here is pioneering Taiwan LED transparent vegetable-cultivation chambers, which provide the necessary photosynthesis and allow fresh vegetable to grow in any climate and location. Also being highlighted are home-use furnishings enabling plant cultivation just by adding water, with automated irrigation and a natural light guiding system. These both reduce energy costs and beautify the home. The future, as can be seen, is to bring more of the aesthetics of the outdoors indoors.

There is a special exhibit staged here demonstrating a unique technology that creates "Preserved Fresh Flowers" (永生花). A novel process is used on real plants—pitcher plants, night-blooming cereus, roses, and so on—that gives rise to non-aging preserved versions. After undergoing the combination of chemical spraying, water extraction, oil filling and, finally, air drying, the plants are "immortalized" in perfect form, maintaining their original colors and textures for close to ten years.

A Pas de Deux of the Cultural Arts and Technology

In the Yuanshan Park Area, Celebrity's House is dedicated to the memory of songstress Teresa Teng (鄧麗君), displaying many valuable treasures from her life. Walk into the Flora Hall (花語廳) and you'll find Teng's lyrical sounds floating in the air. Rose emblems on the wall burst into bloom in synchronicity with your movements. Touch-control screens on the walls, measuring 200 inches, are divided into Taiwan, Hong Kong, Japan, and global windows, allowing you to leaf through her career from her burst to fame in Taiwan through her other phases, the bloom of her popularity ever larger. Fans will also be hit by waves of nostalgia as they choose her famous hits to listen to, which were in Taiwanese, Cantonese and Japanese. In the Fame Hall (風華廳), the technology allows you to be photographed with her on a cover. Photos can be downloaded from the Internet for cherished mementoes.



In homage to Teng, the Celebrity's House designers brought in artists and floriculturists and meshed their work with the latest modern technology. Using motion sensors, you can relive the beauty of “fallen rose petals” by waving your hands and see the virtual roses scatter like snow flakes on the screen. Through your motions, digital gold sand will also magically pile up to form the figure of Teresa Teng. In another installation-art area, you will also find preserved flowers on glorious display, preserved flowers created using specially-developed technology that draws out the water from the petals but leaves them fragrant and with the full look of their natural bloom for 3 to 5 years. A fantasia tapestry of 15,000 of these flowers has been brought together with installation artwork to create a dreamland space symbolizing the sounds of Teng's sweet voice living on forever. 🌹

- 9. In the Flora Hall at Celebrity's House, rose emblems on the wall burst into bloom in synchronicity with your movements.
- 10. Touch-control screens on the Celebrity's House walls, measuring 200 inches, show off the many talents, contributions, and achievements of beloved songstress Teresa Teng.
- 11. A range of leading-concept technologies are used in Celebrity's House to create an artistic dream-like landscape.

A Day Trip Exploring Flowers, Arts, and Traditions

The curtain has already been raised on the Taipei International Flora Expo, and though the focus of the grand show is of course the flower, also on display are many facets of Taipei's rich culture. Spend a day taking in the aesthetics of the flower and enjoying the landscaping at the expo, with the added bonus of the many cultural performances on the expo grounds and the tourist sites in the surrounding area, makes for the perfect "getting to know Taipei's charms" day trip. So off we go.



Fine Arts Park Entrance →South Entrance (breakfast) →Global Garden Area (representative world-tour courtyard gardens) →Greeting Plaza (outdoor performances) →Pavilion of Aroma of Flowers (rest) →Pedestrian Overpass toward Yuanshan →Shanghai and Xi'an Gardens (Chinese-style gardens) →EXPO Dome (fine foods from around world) →EXPO Dome (large-scale floriculture exhibitions, souvenir shopping) →Flower Landscape (brilliant flower-fields landscaping) →Folk Arts Plaza (variety of performances) →Pavilion of Culture (paper sculpture) →Gate 1(Yuanshan) →Taipei Confucius Temple, Dalongdong Baoan Temple →Dalong Night Market



1



2



3

1. Take the south entrance of the Taipei Fine Arts Museum, and head to the second-floor TFAM Café for the special hamburger sandwich breakfast.
2. The Philippines garden has a replica of famous Manila church San Augustin, exterior beautified by a layout of endemic local plants.
3. The Palau garden is a Pacific-island idyll of waterfalls and other natural brush-strokes.

Strolling Merrily through the Country Gardens

First, ride the mass rapid transit system to MRT Yuanshan Station. From there, take a free Flora Expo shuttle bus, or a regular city bus, to the Taipei Fine Arts Museum (美術館) on Zhongshan N. Rd. (中山北路). Take the south entrance of the museum, and go up to the second floor TFAM Café. Order the special sandwich breakfast, and dig in. Surrounded by glass curtains, you will feel bright and comfortable as the sunlight fills the room. Soak in the broad panorama of the Global Garden Area (寰宇庭園區) laid out before you, and let the sun warm your spirit.

After breakfast, head into the museum and choose from among a number of international shows planned just for the expo, including Elsewhere: Paul Gauguin, From Heroic Expression to Resplendent Color: Walasse Ting Retrospective Exhibition, and From Nature to Art. All have the glories of nature and, especially, the beauties of flowers as their focus. Feast your eyes on floral aesthetics as seen through the eyes of the artist before heading out into the landscapes outside to interpret for yourself.

After sating yourself on painted flower beauties, it's time for the real thing. Take the museum's south entrance to find yourself immediately in the Global Garden Area, where magnificent artistic gardens have been set up by 22 countries and 26 cities. The style of each is wonderfully different, dreamed up and made real by the best of the best in floricultural talent from each sponsor. As you might well imagine, depicting the beauties of the iconic floral life from each location is depicting a very different culture, from that of Europe, Asia to Oceania. By way of example, the India garden captures the quintessence of Indian life, revolving around the five elements of the universe: earth, water, air, fire, and sky. Canada's garden features two giant models of salmon, Father Salmon and Mother Salmon, and expounds the wisdom of an eco-friendly, nature-preserving lifestyle. America has on display a large curvilinear wooden sculpture representing the Space Shuttle, Palau has on display a magical coral garden, and Hungary has on display a scene of a shepherd guiding his flock. A trip around the Global Garden Area is a trip around the world, and exposure to the deep and ever-expanding reservoir of human cultural creativity.

After traipsing through all—or at least quite a few—of the many gardens, it's perhaps time for a rest, so head over to the nearby Greeting Plaza (迎客坊). While resting your feet, you can enjoy cultural-arts performance here. The focus here is on local-style shows with ethnic elements—Hakka (客家), Minnan (閩南; Southern Fujian), etc. Enjoy pop and traditional music, dance, folk arts, and other attractions. Then head off over to the Pavilion of Aroma of Flowers (風味館), which has a magnificent exterior made up of six overlapping flower petals. On the second level, you can sip on a cup of fine coffee and/



4



5



6

or jump into the DIY activities, such as flower pressing and flower-theme sand painting. In this half-open space framed by interlaced woven bamboo, the fresh air flows freely and spirits soar high, light and relaxed.

Browsing the Floral Tapestry of Yuanshan Park Area

After enjoying the Pavilion of Aroma of Flowers, take the pedestrian overpass across Zhongshan N. Rd. into the Yuanshan Park Area (圓山公園區). Here you'll find the Shanghai and Xi'an gardens, named Shanghai Charm and Xi'an's Courtyard, both fine places to relax. Both these courtyard gardens are based on the classic Chinese-style courtyard garden, focused on an aura of tranquility and delicately wrought visual mises-en-scene. The Shanghai garden is especially rich in ornamental flowers and plants, with small bridges and running waters filled with life. The Xi'an courtyard stresses the old walled city and northern frontier life, showing beauty of a different, hardy form. After this, enter the EXPO Dome (爭艷館) from the east side, where an expansive food court presents you with the foods from around the world, and also with all of Taiwan's classic traditional snack favorites. Also highly recommended is the specially created Flora Expo *biandang* (便當) or lunchbox. Whichever you choose, after recharging your batteries, your post-lunch quest is to take in the magnificent variety of seasonal flowers on display at the dome's large-scale exhibits. This will take a bit of time, so when in need of rest, slip over to the dome's central courtyard, where you can get a good look at the pastel joy of the Flora Rainbow (七道彩虹) landscape art on show here.

Within the dome, you'll also find a large shop filled to bursting with specially created gift and souvenir items—1,500 different selections in all. There's floral-theme beads to spell out your own designs, Flora Expo thermoses, and replicas of such attractions as the popular “paper speakers” at the Pavilion of Dreams (夢想館) and the preserved roses from the Celebrity's House (名人館).

Another attraction not to be missed in the Yuanshan Park Area is the Flower Landscape (地景花海) landscape art, which takes up almost a full hectare. The immense field of tightly packed flowers rolls up over a hilly area like a colorful rolling sea. There are 600,000 individual plants, a bursting Van Gogh palette of bright colors, and clever built-in designs—ample reason why this is among the most popular visitor spots for photo mementoes.

- 4. The Xi'an courtyard stresses the old walled city and hardy beauty of northern frontier life.
- 5. The EXPO Dome sells more than 1,500 creative gift items with a Flora Expo theme.
- 6. The surging, waving Sea of Flowers in the Yuanshan Park Area has its “art”—i.e., its flowers—changed with the seasons, bringing new dazzlement.



Enjoying Cultural Art Shows, Experiencing Traditional Folk Arts

It's now time to move over to the close-by Folk Arts Plaza (百藝廣場), dedicated to Minnan culture. You'll be amazed by the varieties, and troupes roll out one after the other; there are four performances daily at the Pear Garden Theatre (梨園劇場) and Bamboo Forest Battle Array (竹林藝陣). Enjoy the traditional dragon dances, lion dances, Chinese orchestral music, Chinese opera, and other art forms. The Pavilion of Culture (文化館) is also showing off traditional art forms, in more static forms; you have until mid-February to take in the Destiny of Rebirth (再生緣) exhibit on traditional paper carving, where cutting-edge innovation is introduced and recycled materials emphasized in a show of surpassing beauty focused on flowers and incense plants.

For a little fun outside the expo grounds, and a little exploration of the local neighbourhood, leave the Yuanshan Park Area and walk toward Kulun St. (庫倫街) for about ten minutes to Taipei Confucius Temple (臺北市孔廟) and Baoan Temple (保安宮), two key cultural and heritage sites. Here you get up-close exposure to Taiwan's deep-rooted traditional religious beliefs. The Confucius Temple is at the moment carrying out a regular ancient sacrificial rites program, and from January 15 to 17, as part of the city's Chinese Character Festival (漢字文化節), this will be the venue for a cultural creativity market and creative clothing exhibit, two excellent

windows into Chinese culture. Finally, don't miss the chance to blend in with the crowds at the Dalong Night Market (大龍夜市), everyone is on the hunt for the best of the best in traditional Taiwan snacks. It is the perfect place to end your "Flora Expo Floral and Folk Arts" adventure. 📍

Information

Taipei Confucius Temple 臺北市孔廟

Add: 275 Dalong St. (大龍街275號)

Tel: (02) 2592-3934

Website: www.ct.taipei.gov.tw

Ancient Sacrificial Rites: Until July 23, Tue~Sat
09:00~09:30

1/15-1/16 Chinese Character Festival/Cultural Creativity Market; 13:00~19:00, mouth of Dalong St. (大龍街口)

1/17 Chinese Character Festival/Creative Clothing Exhibit; starts 19:30, Taipei Confucius Temple Dacheng Hall (孔廟大成殿)

Dalongdong Baoan Temple 大龍峒保安宮

Add: 61 Hama St. (哈密街61號)

Tel: (02) 2595-1676

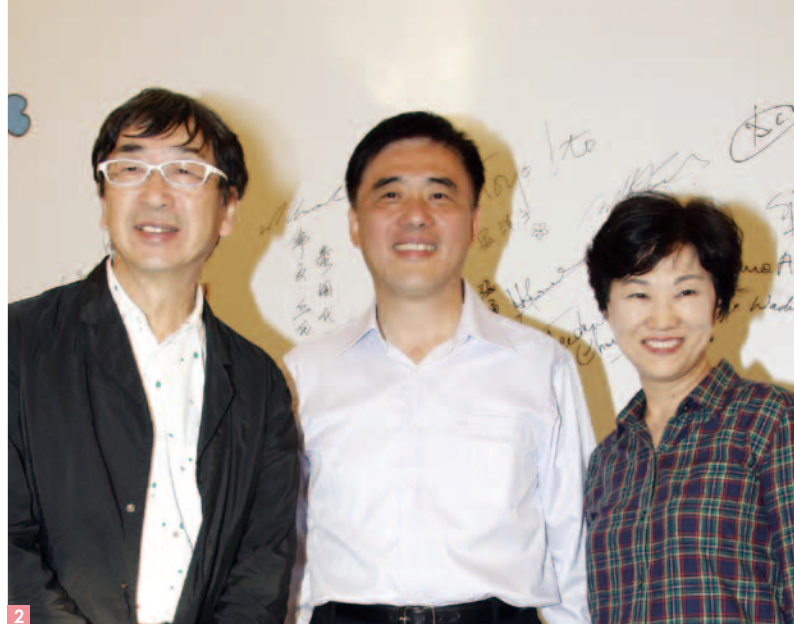
Website: www.baoan.org.tw

Dalong Night Market 大龍夜市

Location: Intersection of Dalong St. and Kulun St.
(大龍街與庫倫街交叉口)



7. Enjoy traditional arts at the Pavilion of Culture's Pear Garden Theatre.
8. With a look and ambiance fragrant with history, Baoan Temple remains a central hub of community worship, air thick with incense.
9. Tours are offered in four languages at Taipei Confucius Temple to bring overseas visitors even closer to the ways of local Confucian culture.
10. Special gift-item "inkstick" cakes made at Dalongdong's Vigor Kobo bakery, honoring Confucius.



The Flora Expo Shines, Drawing Bright Lights from Abroad



From the opening curtain of the Taipei International Flora Expo, there has been a steady stream of high-level public figures and celebrities visiting from overseas. Official visits were in fact kicked off on the day before the expo's official opening, when President Ma Ying-jeou (馬英九) and his wife formally escorted five heads of state, from Nauru, Palau, the Marshall Islands, Tuvalu, and Belize, around the sprawling facilities. Both Ma and his dignitary guests expressed especially high praise for the high-tech display at the Pavilion of Dreams (夢想館), and for the power of the message being delivered at the Flora Expo—that of the connection between the health of the human lifestyle and that of the natural environment.

Following this was a visit by the president of Honduras, Porfirio Lobo Sosa and first lady. On a four-day official visit to Taiwan as a formal diplomatic ally, he made time for a special call on the Flora Expo. The Honduran president visited the EXPO Dome (爭艷館) as well as the Pavilion of New Fashion (流行館), commenting on the great hospitality and the respect that are so intrinsic to the culture of Taiwan. In addition, he professed admiration to how Flora Expo paid respect to the world's floriculture and landscaping practices.

During a two-day visit, Japan's former Prime Minister, Shinzo Abe, specially targeted the three pavilions of the expo's Xinsheng Park Area. He reported afterwards that he was most impressed by the multimedia presentations of Taiwan's Yushan (玉山; Mt. Jade) and other magnificently scenic landscapes at the Pavilion of Angel Life (天使生活館). Another Japanese visitor, master architect Toyo Ito, had special praise for the trend-setting technology used at the Pavilion of New Fashion as a model for the rest of the globe in the environmental conservation of the 21st century. He marvelled at the innovative use of recycled PET bottles transformed into bricks. Ito wrote of his hope that “humans become an integral part of nature, and so should architecture.” These words were written and placed in the pavilion's Message in a Bottle (瓶中信) display.

John Woo (吳宇森), the internationally acclaimed film director, also came to take a look. He explored a few chosen sites in-depth with his wife on the third day of the expo—the Pavilion of Dreams, Pavilion of Future (未來館), and Pavilion of Regimen (養生館). What he liked best, he stated, was the advanced digital technology used at

the Pavilion of Dreams, notably the curvilinear theater and the 3D displays of Taiwan's epic natural scenery, adding that he intended to bring his movie team on a pilgrimage to the pavilion and to one day use the site as a filming location for one of his works.

Another international celebrity to hit the scene was film star Jackie Chan (成龍), who came to the Flora Expo to visit and to scout for shooting locations for his 100th movie. Chan spent extra time checking out the Pavilion of Dreams and its Dream Theater (夢想劇場), then headed to the launch-point for the Flora Expo's Blue Highway yacht cruises on the Keelung River in the Dajia Riverside Park Area (大佳河濱公園區). Upon his departure, he indicated the possibility of including the expo's beauty and originality in a future work after the expo's curtains come down. In addition, two Japanese celebrities, Judy Ongg (翁倩玉), with Taiwanese origins, and Kento Handa, pop idol and actor, made a special trip from Japan to shoot some travel programs about the expo; Ongg expressed great pride in Taiwan when discussing the surpassing beauty of the expo's never-ending tableau variation, and she will recommend her audiences to visit the Flora Expo.

While in Taiwan to promote the latest *Harry Potter* flick, actors James and Oliver Phelps took the opportunity to spend time at the expo. After visiting the interactive theatres in the Pavilion of Dreams, they were dazzled by the intricate proximity sensors and the mystic breathing sensor that can detect human breath and cause a virtual tree to grow. They were amazed on how the magic in the *Harry Potter*'s imaginary Hogwarts School can be recreated here in the expo. 📷

1. International movie star Jackie Chan was thrilled with all the high-tech ingenuity he witnessed at the Pavilion of Dreams.
2. Japanese master architect Toyo Ito (First from left) and Taipei City Mayor Hau Lung-bin (Middle) had great praise for the thrilling originality of the Pavilion of New Fashion.
3. *Harry Potter* actors James and Oliver Phelps proclaimed that the imaginary Pavilion of Dreams world was just as fantastic as the Hogwarts school.
4. TV and film celebrity Judy Ongg, originally from Taiwan, came specially to introduce the Flora Expo's attractions to her fans back in Japan.
5. The president of Honduras, Porfirio Lobo Sosa, professed admiration to how Flora Expo paid respect to the world's floriculture and landscaping practices.
6. International film director John Woo said that his Flora Expo visit made Taiwan's beautiful-landscape future and Taipei's vitality and originality abundantly clear to him.

The Taipei International Flora Expo –

Cultural Shows with a Playful “Flower” Focus

The long anticipated Taipei Int'l Flora Expo has now taken center stage in Taipei City. There are flowers and flower art galore to dazzle your eye, and there is more—cultural performances of consummate artistry.

The Chinese New Year will fall in February this year, and the Flora Expo will celebrate with a Chinese Lunar New Year Exhibition at the EXPO Dome.

Flowers and plants arranged

will be to evoke all sorts of auspicious symbolism. These will include the butterfly orchid, “tiger head” orchid, chrysanthemums symbolizing wealth and social position, lilies, the pussy willow symbolizing rising social standing, and ornamental pineapples inviting happiness. The colorful splendor and ambiance of the traditional New Year period will be on exuberant display.

In terms of competitions, the Japan Ikenobo Judged Flora Art Competition (東洋花藝大賞) will hit the stage on





February 19. The greatest practitioners of the 550-year-old art of floral arrangement known as ikebana will come together, giving glorious expression to the theme of “natural arrangement beside the peaks and waters of the great outdoors.” One of the top 3 international orchid shows, the 2011 Taipei International Orchid Show will open Feb. 26. Visitors can enjoy seeing the variety of orchid species and admire the latest technology behind orchid cultivation. The orchids will include the best in size, fragrance and quantity. It will sure be an unforgettable experience.

During the Flora Expo, on display on the second level of the visually dynamic Pavilion of New Fashion (流行館) will be a superb range of creative clothing creating by a sparkling line-up of Taiwan's best designers, using recycled fabrics in a runway of bold and exuberantly colorful fashion statements that follow the flowers of each month. Architect Arthur Huang (黃謙智), who designed the Pavilion of New Fashion (流行館), aka FE EcoARK, has led a crew of bright young artists in the creation of the “Dream Cabin” (夢想艙), using recycled PET bottles in a multimedia and art installation, and using specular reflection and the skills of traditional Chinese garden landscape-framing in a reality-redefining visual space both challenging and thrilling concepts.

1. At the 2011 Taipei International Orchid Show orchid-lovers can revel in the incredible variety and learn about new cultivation techniques and achievements.
2. In the Pavilion of Fashion's Dream Cabin, young artists use recycled PET bottles in unison with multimedia and art-installation creativity.
3. In the Fine Arts Park Area's Greeting Plaza there are daily variety performances featuring string music, Kun opera, indigenous dance, dance, and other arts.



Flora Expo Jan-Feb Exhibition Schedule

Yuanshan Park Area

EXPO Dome:

Competition:

Japan Ikenobo Judged Flora Art Competition

Time: 2/19~2/27

Special Theme Exhibit:

Chinese Lunar New Year Exhibition

Time: 2/6~2/13

Slow Life, Quality Living – Exhibition on Microclimate Studies

Time: 1/29~2/20

2011 Taipei International Orchid Show

Time: 2/26~3/20

EXPO Dome Gallery:

“Small Sources” flower arrangement exhibit

Time: 2/7~2/13

Pavilion of New Fashion:

Flower Time – Kang Yen-ling designer fashion show

Time: Until 4/25

Dream Cabin

Time: Until 4/25

Folk Arts Plaza:

Variety performance with jazz dance, hand puppets, drama, Taiwanese puppetry, music, etc.

Time: Daily 10:30~11:30

15:00~16:00

Each show 30 minutes

Pavilion of Culture:

Destiny of Rebirth exhibit on paper-carving arts, incense-making

Time: 1/14~2/18

Floral Dreams literature, fine arts, and photography exhibit

Time: 2/19~4/25



In the arena of arts and culture performances, a highlight will be the attendance of French street performer Jean-Louis Cortés, who will of course be bringing his famed highly mobile street-performing piano for poetic and humorous shows at the Flora Expo's Garden of Dreams (夢想庭園區). At the EXPO Hall (舞蝶館), the second show scheduled for regular performances is an adaptation of famed local animator Jimmy's (幾米) story *A Flower Blooms in Secret* (秘密花開了), with 14 young actors aged 9 to 27 from the Diabolo Dance Theatre (舞鈴劇場) dressed up as Jimmy's inimitable characters, deftly demonstrating traditional diabolo folk-toy skills in a performance that in turn blends theatre and dance. The Diabolo Dance Theatre has created the world's first LED diabolos, dubbed the "Golden Apple" (金蘋果), which throw out a brilliant display of whirling light and color when spun.

In the cultural-performance area centered on the EXPO Arena (行動巨蛋) in the Dajia Riverside Park Area (大佳河濱公園區), the kid-oriented Paperwindmill Inchworm Happiness Parade (幸福毛毛蟲大遊行) parades will be performed during the full length of the expo. In addition, each day at 2 pm and 7 pm, different artistic groups of stellar reputation from home and abroad will be putting on shows; don't miss the creativity of the Taipei Philharmonic Orchestra, Cloud Gate Theatre 2, Traditional Japanese Dance-Flower Banquet by the Sakura Group, and Hung Sheng Lion Dance Theatre (鴻勝醒獅團). Each splendid display of artistry is worth the price of your Flora Expo admission all on its own. 12

4. The EXPO Hall's second regular-performance show is an adaptation of local animator Jimmy's story *A Flower Blooms in Secret*, with young actors aged 9 to 27 from Diabolo Dance Theatre playing Jimmy's inimitable characters.
5. Each day different performance groups put on shows at the EXPO Arena in Dajia Riverside Park Area.

Flora Expo Jan-Feb Exhibition Schedule

Fine Arts Park Area

Taipei Fine Arts Square:

Variety performances with magic, drum music, etc.
Time: Daily 10:00~12:00, 13:00~20:30
 Each show 20~30 mins, program changed daily

Greeting Plaza:

String music, Kun opera, indigenous dance, dance, and more
Time: Daily 10:00~12:00, 13:00~20:30
 Each show 20~30 mins, program changes daily

EXPO Hall:

A Flower Blooms in Secret, regular performances
Time: Until 3/20
 Three shows daily 14:30/16:30/19:00
 Robot Theatre V-Baby Show
Time: Two shows daily 11:00/15:30

Xinsheng Park Area

Garden of Dreams:

Variety performances with puppet theater, dance, music, etc.
Time: Daily 10:30~16:30
 Each show 20~30 mins, program changes every 2~3 days

Beside Garden of Dreams:

Piano street performance
Time: 2/14~2/20

Dajia Riverside Park Area

EXPO Arena show area:

(Weekly Themes)
Time: Daily 14:00/19:00
 Two lantern shows: 11:00/17:00

Carnival Boulevard:

Paperwindmill Inchworm Happiness Parade (parade led by ladybug, flower fairies, and stilt-walkers, with Flora Expo mascots and human figurines following on floats, interacting with onlookers)
Time: Daily 15:00

Visit the official Flora Expo website for the latest detail (www.2010taipeiexpo.tw)



A Happy 100th Birthday to the Republic of China!

This is the hundredth year since the founding of the Republic of China, and a grand festival of celebration activities have been organized by the government and private sector in a party that will last the entire year.

The number 100 is heavily laden with auspicious meaning in Chinese society, portentous with the arrival of good fortune and great accomplishments. It was with his eleventh attempt at revolution that Dr. Sun Yat-sen, seen as the father of the republic, was successful with his dedicated followers in overthrowing the decaying Qing Dynasty government. Since then, the republic's road has not always been smooth, with Kuomintang (Nationalist) republican forces being pushed off the mainland during the Chinese Civil War. But today, the island of Taiwan is a thriving land with highly developed electronics and high-tech, commerce and trade, and culture and creativity industries. The population is hard-working, and the people's efforts made the ROC one of Asia's famed "Four Little Dragons," ensuring the country a seat at the international table of nations. The centenary of the ROC thus has powerful significance for both the government and people.

On the first day of each New Year, there is a solemn flag-raising ceremony staged on the grand plaza before the Presidential Office Building (總統府). This year, the event is being dramatically expanded, with eight large musical groups from around the island invited to perform the national anthem and the broadcast of a special documentary depicting the great events in the life of the republic to date, providing all who come to celebrate glimpses of the past and vision of the future. After the flag-raising ceremony, something unusual and very special will occur—President Ma Ying-jeou (馬英九) will serve as the presiding witness for a mass wedding of 100 couples, certainly the perfect way to mark the joy and happiness of the day.



Among the many special activities being staged as part of the centenary celebrations is the 7th Chinese Character Festival (漢字文化節), an event organized by the city government as a gift to the republic's centenary. It started on Dec. 20 and will conclude on Jan. 30, a festival highlighted by the series of stage performances to run from Jan 14 to 16 at the Nan Hai Auditorium (南海劇場) entitled "Black Storm, Banging Gongs—Jeff Lee Magic Show" (戲墨開鑼—魔力震漢魔術秀), the first-ever magic show to revolve around the Chinese written character, with a series of never-before-seen tricks unveiled. Other activities include the customary New Year Calligraphy (新春開筆) gathering at Chiang Kai-shek Memorial Hall (中正紀念堂), a series of lectures and exhibits with the Chinese character as the theme in major bookstores, and the showing of installation artworks with the Chinese character as star attraction in four MRT stations, including Chiang Kai-shek Memorial Hall Station.

In addition, the Tourism Bureau's "Tour Taiwan – Feel the Centennial Excitement" (旅行臺灣・感動100) promotional program is also going on throughout the year, with 10 ambitious theme tours themes, introducing Taiwan's "100 Best." What better reason, and what better way, to explore this land's endless beauties? 🇹🇼

Information

Tour Taiwan – Feel the Centennial Excitement 旅行臺灣・感動100

Tel: (02) 8773-4300

Website: 100.taiwan.net.tw

The 7th Chinese Character Festival 第七屆漢字文化節

Time: Until 1/30

Venue: Chiang Kai-shek Memorial Hall, Taipei Confucius Temple, and other locations; for details on activity program, visit chinese-character-festival.org.tw



Traditional Chinese New Year Fun with Trendy New Twists

The Chinese Lunar New Year is now just down the road, and shops in the city are starting to put out their New Year goods. The feel in the air is changing, and the joyous holiday spirit pervading. The Chinese New Year, also called the Spring Festival (春節), is number one in the hearts of the people in terms of traditional folk celebrations. But with changing times come changing fashions, and some newfangled ideas have been brought to the festivities, with old-time tradition today coexisting harmoniously with new New Year fashions. Though everyone seems to celebrate in their own way, some things are too beloved to ever see change—the traditional New Year's Eve family meal, the tradition of staying up late or all night to see the New Year, and giving red envelopes with cash gifts inside.

New Year's Goods Shopping at Traditional Markets, Family Traditions at the Hearth

Traditional customs require the family to thoroughly clean the home before the New Year arrives. The idea is to “sweep out the old and welcome the new.” When the house is readied, auspicious

Spring Festival couplets (春聯) are put up, one on either side of the main door and one across the top. Other traditional expressions may also be posted on the door, such as “Welcome Wealth and Treasure” (招財進寶) and “Happy New Year” (恭賀新禧). The characters for “Spring” (春) or “Good Fortune” (福) may be posted on bedroom doors and elsewhere, and may well be posted upside-down, for the word for “upside-down” (倒) rhymes with that for “arrives” (到), indicating that “Spring is arriving” and “Good fortune is arriving.” Some people may post the word “full” (滿) on the rice barrel, indicating the family larder will be filled with good food throughout the year to come.

On New Year's Eve, important rituals are conducted in the home in which sacrificial offerings are made to both ancestors and gods, thanking them for protecting the home and family in the closing year and asking for their benevolence in the coming year. Among the offerings is cooked rice in which a red “spring flower” (春花; a paper-cut character for “spring” on it) has been inserted, making it “spring rice” (春飯); in Taiwanese, the words for “spring” (春) and “plenty” (剩) are homonyms, so this sacrificial dish invites plenty of food next year.



With the completion of the sacrifices comes the event the whole family has been waiting for, the traditional New Year's Eve meal, called *weilu* (圍爐) or “surrounding the stove.” The foods are all more colorful and attractive than for a regular meal, and each dish is loaded with symbolism. For example, the words for “fish” (魚) and “surplus” (餘) are homonyms, so a fish dish signifies the expression “every year a surplus” (年年有餘). Radish is called *caitou* (菜頭), sounding like the *caitou* (彩頭; fortune) in the expression “*haocaitou*” (好彩頭) or “good fortune.” A common name for leaf mustard is “year-round vegetable” (長年菜) or *changnian cai*, and the *chang* shows up in *changshou* (長壽) or “long life,” a common New year blessing.

As the meal winds down older family members bring out red envelopes for the junior members—a favorite time, of course, for the latter. Another custom is to stay up late to let the Old Year out and bring the New Year in, and some families will make dumplings at midnight for a late-night snack, for they look like the gold and silver ingots of imperial days and are thus very auspicious. At the turn of the Lunar New Year, firecrackers are set off to welcome it with a bang, and many people get up very early to go to temple to pray for blessings, and folks will head off to pay courtesy calls on relatives and friends.

Traditional markets close for the long Chinese New Year holidays, so families need to stock up on all the necessary foods and snacks in advance. This festive

shopping is itself a much-loved part of the New Year routine, and venerable old shops and traditional markets such as Nanmen Market (南門市場) and Dongmen Market (東門市場) are often filled to burst with those on the hunt for traditional New Year goodies. It's a party-like atmosphere, and the city govt. adds to the ambiance by organizing the annual 2011 Taipei Lunar New Year Festival (臺北年貨大街), a great way for you to jump right in and get “shoulder to shoulder” with the local culture.

This year's festival will launch on Jan. 15, with store shutters to close—at least for the carnival—on Feb 1. Here are the six shopping areas: Dadaocheng shopping area (大稻埕商圈), the underground Taipei City Mall (台北地下街), Ningxia shopping area (寧夏商圈), Huayin St. shopping area (華陰街商圈), the shopping area behind Taipei Main Station (後車站商圈), and Binjiang shopping area (濱江商圈). Goods on sale run from the incredible variety of traditional foodstuffs and other fixtures needed for the proper celebration of the season to clothing, leather items, and much else that might catch your interest as well—a one-stop shopping dream.

1-2. The Taipei Lunar New Year Festival is a time of great merchandise, great crowds, and great opportunity for tourists from overseas to experience traditional Chinese culture and the exciting Taipei atmosphere.

3. While shopping for iconic New Year goods you can buy classic New Year couplets, adding to your Spring Festival good-fortune experience.



Trendy New Year Mall Shopping, New Year Nights at Swank Hotels

After a dose of the crowd of people, the shouting hawkers, and the noise and bustle of traditional markets and old-style shopping streets, many folks like to change the pace of their New Year shopping spree with some time at a sleek, bright, spacious mall or big retailer. These places have more convenient parking, and feature slick, sophisticated packaging good for selecting New Year gifts for others. There are lots of traditional cheery and festive Taiwan goods on offer that come in attractive boxes, such as *niangao* (年糕), sausages and cured meats; there are also uniquely shaped gift boxes filled with imported Japanese or Western-style pastries. The custom is to wear brand-new clothes and hats for the New Year, bringing those looking for the trendiest new fashions to malls and department stores in great waves. The grand shopping malls will be exquisitely decorated for the New Year festivity, adding to the joy and bustle.

Preparing the sumptuous New Year's Eve meal is a major undertaking, and in recent years the professional provision of part or all of these meals—takeaway and home delivery—has become a booming business in Taiwan. The market has become a battleground of purveyors jostling for your attention and patronage—

place your orders with convenience stores, big retailers, famous restaurants, and five-star hotels.

Prepared dishes bought outside are most often given auspicious names, adding to their value and putting even more zesty New Year seasoning into the eating. A few examples: stewed pork ribs with monascus and scallion is named “Wealth, Honor, and Distinction Fill the Home” (富貴顯耀滿堂彩) by one establishment; braised lobster with truffle sauce is declared “The Family Prospers in All Realms” (家運亨通八方); Shanghai-style smoked yellow fish is “Home Filled with Gold, Every Year a Surplus” (黃金屋滿年年餘). Even the sweets are auspiciously named; for example, one restaurant names its steamed pine nuts with date cake “Promotions Step by Step, Every Year Higher” (步步高升年年高), a traditional expression. Since many people these days have a decided taste for the new and different, some hotels are also promoting Western-style New Year meal takeaway packages.

To ease the pressure of preparing big New Year's Eve feasts, more and more families are nowadays departing home and hearth for restaurant or hotel. These establishments invariably include what are considered the highest-shelf choices—lobster, abalone, scallops.



All dishes of course also come with auspicious names; for example, one restaurant has (literally translated) an “Auspicious Surplus Family Reunion Feast” (吉慶有餘團圓宴) and a “Spring Filled with Wealth Family Reunion Feast” (春滿富貴團圓宴). Five-star hotels offer a variety of options beyond the traditional-style New Year's Eve meal, including a seafood feast and shabu-shabu, a Japanese variant of hotpot. The price for the meal may be higher at a big hotel, but families are willing to treat themselves to a special treat after a year of hard work. Some hotels even set up special late-night “Old Year out, New Year in” activities, for instance with the God of Wealth (財神爺) specially showing up to wish patrons promotions and wealth, well-known singers giving performances, acrobatics shows, and raffles.

How will you be spending your Chinese New Year? Any of the above ideas got you thinking? 12



Information

Taipei Lunar New Year Festival 臺北年貨大街

Time: 1/15~2/1

Venues: Six major selling areas, Dadaocheng, Taipei City Mall, Ningxia St., Huayin St., and Binjiang shopping areas, and the shopping area behind Taipei Main Station

Website: www.tcooc.taipei.gov.tw

Transportation:

Route for No. 518 New Year Bus operated by Capital Bus—Yanping N. Rd. 延平北路 (Dadaocheng shopping area) —Minsheng West, East Roads 民生西、東路 (Ningxia shopping area) —Tayou Rd. 塔悠路—Bade Rd. 八德路 (Wufenpu shopping area) —Chengmei Bridge 成美橋—Sec. 1, Jiuzong Rd. 舊宗路一段 (Costco, RT-Mart, and other large-scale retailers)—MacArthur Housing Complex 麥帥新城—Neihu 內湖 To/From Binjiang shopping area, take buses No. 49, 74, 286, 542, 642, 643

4. During the Lunar New Year period head to Sun Yat-sen Memorial Hall and Chiang Kai-shek Memorial Hall for calligraphy demonstrations and exhibitions showing off Taiwan's great masters.
5. As the lunar-calendar New Year approaches, trees along Taipei's sidewalks are decked out in seasonal festive garb.
6. Convenient takeaway New Year food has become a big hit, with five-star hotels supplying sumptuous feasts. (Photo courtesy of Ambassador Hotel Taipei)
7. The Lunar New Year's Eve meal is the first of the holidays, and today many families like to treat themselves to five-star New Year theme meals at the city's plush hotels. (Photo courtesy of Grand Formosa Regent Taipei)
8. Taiwan's special pineapples cakes make a great New Year's gift.
9. Five-star hotels offer options beyond the traditional-style Lunar New Year's Eve meal, including special late-night shows with, for example, the God of Wealth arriving to wish patrons promotions and wealth. (Photo courtesy of Grand Victoria Hotel)

Taipei Welcomes Spring with a Great Bloom of Cultural Events

During the traditional Lunar New Year season, the city heats up with public fun. When on the island, do as the islanders do—what better way to get to know the culture? Here's a list of seasonal celebrations going on at tourist sites, museums, temples, and other spots. This city and its friendly people await you, with open arms. 🐇



Time	Activity	Location	Organizer/Tel/Website
Until 1/30	Presentation of Spring Festival Couplets Giveaway	Taipei Xingtian Temple 臺北行天宮 109, Sec. 2, Minquan E. Rd. (民權東路2段109號)	Taipei Xingtian Temple (02) 2502-7924 www.ht.org.tw
1/22-1/23	Writing of spring couplets, cutting of auspicious characters	National Taiwan Museum 臺灣博物館 2 Xiangyang Rd. (襄陽路2號)	National Taiwan Museum (02) 2382-2566 www.ntm.gov.tw
1/23-1/30 09:30-16:00	2011 Almanac DIY: Visitors to the Cosmic Adventure attraction can use sticker for various dates to paste together their own astrological almanac. (Limit 200 per day.)	Taipei Astronomical Museum 臺北市立天文科學教育館 363 Jihe Rd. Display area on 4F, Cosmic Adventure entrance (基河路363號展示場4樓宇宙探險出、入口)	Taipei Astronomical Museum (02) 2831-4551 www.tam.gov.tw
2/3-2/5 09:30-16:00	Rabbit Red Envelope Draw: Visitors to the Cosmic Adventure attractions can test their luck picking from a wall of red envelopes. (Limited quantity each day.)		
1/29-2/1 09:30-17:30 2/1 16:30 Raffle	Famous Artist New Year Art Draw: The first 100 visitors to the TFAM can draw for a print by famed graphic artist Zheng Shan-xi (鄭善禧) with a Year of the Rabbit zodiac animal theme.	Taipei Fine Arts Museum 臺北市立美術館 181, Sec. 3, Zhongshan N. Rd. (中山北路3段181號)	Taipei Fine Arts Museum (02) 2595-7656 www.tfam.museum

1/29-2/13	New Year Calligraphy Exhibit	National Dr. Sun Yat-sen Memorial Hall 國父紀念館 505, Sec. 4, Ren'ai Rd. (仁愛路4段505號) 3F, Yat-sen Gallery 逸仙藝廊	Dept. of Education, Taipei City Govt. Republic of China Calligraphy Education Society
2/11-2/20 Exhibit open throughout the day, lantern display at 18:30-23:30	Taipei Lantern Festival: A cornucopia of creative lanterns with a Year of the Rabbit theme, expressed with myriad forms of light, sound, and shape. There will be large-scale handheld lantern giveaways, lantern riddle contests with prizes, and other fun	National Dr. Sun Yat-sen Memorial Hall 國父紀念館 	Dept. of Civil Affairs, Taipei City Government 1999 Outside Taipei City/County (02) 2720-8889, ext. 6237 www.ca.taipei.gov.tw
1/29 14:00-15:30	Spring Couplet Giveaway	Chiang Kai-shek Memorial Hall 中正紀念堂 21 Zhongshan S. Rd. (中山南路21號) Central Hallway 中央通廊	Chiang Kai-shek Memorial Hall (02) 2343-1100 www.cksmh.gov.tw
2/13 14:00-16:00	Lantern Festival Gala Celebration: Lion dancing, dragon dancing, drumming, rope jumping, diabolo tricks, and other traditional folk arts	Gate of Great Loyalty Plaza 大孝門廣場	
1/29-2/2	Exhibit on Japan's Daikon Island peonies, exhibit on Shimane Prefecture (Japan) tourism and cultural artifacts	Taipei Jianguo Holiday Flower Market 臺北建國花市 Under Jianguo Elevated Expressway between Xinyi and Ren'ai roads (信義路與仁愛路間, 建國高架橋下橋段)	Chinese Flower and Gardening Culture and Education Foundation, Taipei Jianguo Holiday Flower Market Council (02) 2702-6493 www.fafa.org.tw
1/30-12/31 09:00-17:00	Year of the Rabbit Zodiac Animal Exhibit: Exploration of members of the rabbit family—biology, ecology and habits, how they are seen in human culture, and conservation efforts	Taipei Zoo 臺北動物園 30, Sec. 2, Xinguang Rd. Education Center (新光路2段30號, 教育中心特展區)	Taipei Zoo (02) 2938-2300, ext. 526 www.zoo.gov.tw
2/17 13:30	5,000 cute rabbit-shaped handheld lanterns giveaway	Dalongdong Baoan Temple 大龍峒保安宮 61 Hami St. (哈密街61號)	Dalongdong Baoan Temple (02) 2595-1676 www.baoan.org.tw
2/3 06:00	Bell-Ringing Prayer and Lucky Bag Giveaway The first sounding of the temple bell at the Lunar New Year symbolizes departure of the old and arrival of the new. The temple's lucky bags symbolize "carry good fortune with you." Visitors may sound a temple bell themselves in the prayer area praying for blessings, and pay their respects to the Great Sage.	Taipei Confucius Temple 臺北市孔廟 275 Dalong St. (大龍街275號) Plaza before Dacheng Hall (大成殿前廣場)	Taipei Confucius Temple (02) 2585-2730 www.ct.taipei.gov.tw
2/3-2/6 10:00-11:00 14:30-15:30	Confucius Temple New Year Tours: Regular scheduled tours in English, French, Japanese, and Korean	Taipei Confucius Temple park area	



Year of the “Floral” Rabbit-

2011 Taipei Lantern Festival Set to Dazzle the City

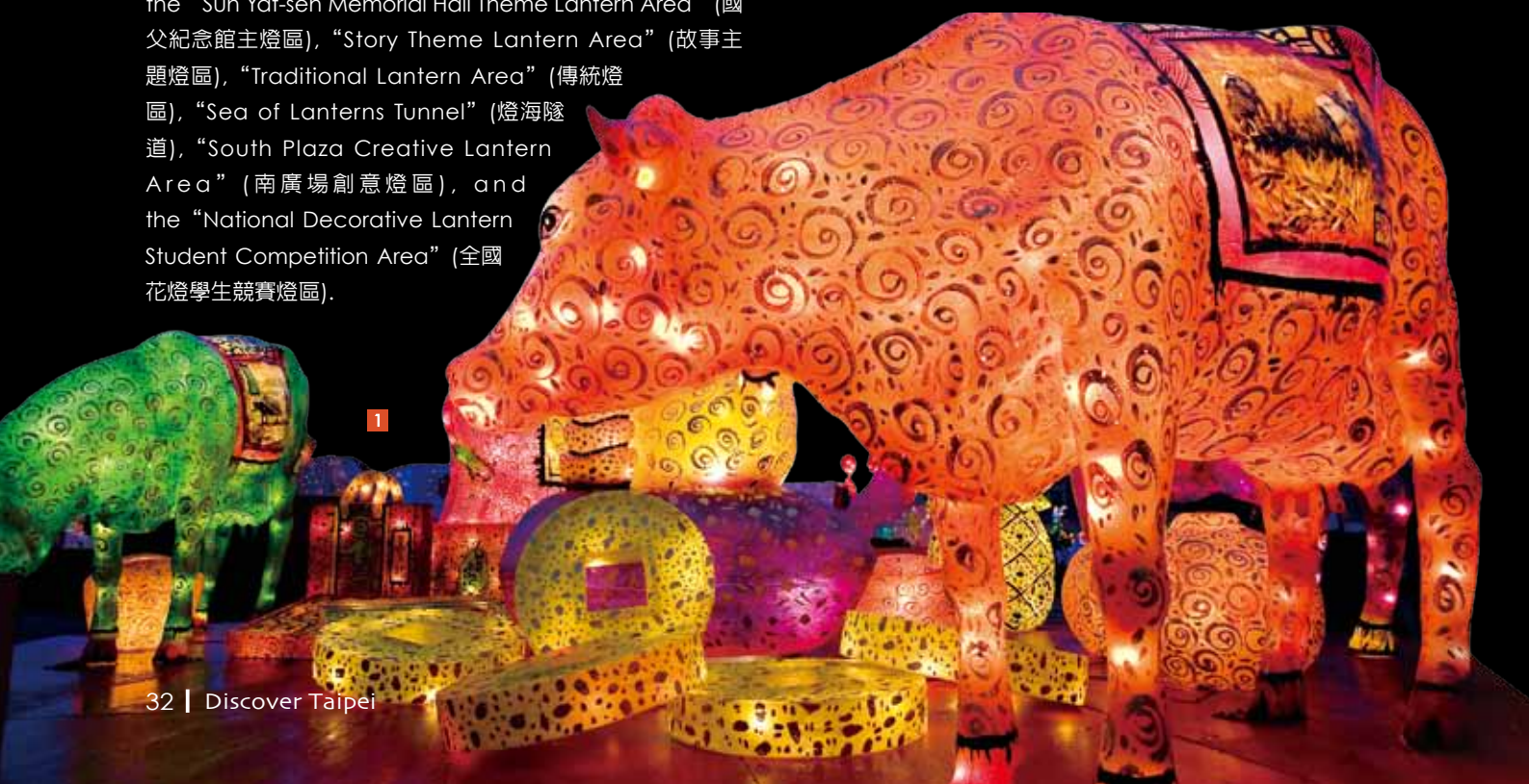
In Chinese tradition, the Lunar New Year period extends from the first day of the first lunar month to the 15th day. The 15th is the Lantern Festival, and is also called the “Little New Year” (小過年). Savoring of finely wrought decorative lanterns is an age-old custom on this day, and in modern time, large-scale and extravagant celebrations have been built around this ancient rite. The 2011 Taipei Lantern Festival (2011臺北燈節), a huge multi-day party thrown by the city govt., will run from February 11 to 20, with the theme, “Floral Rabbit Welcomes the Spring and Celebrates the Lantern Festival” (花兔迎春慶元宵); “floral” refers to the city’s ongoing Taipei International Flora Expo extravaganza. Everyone is welcome to the grounds of the Sun Yat-sen Memorial Hall (國父紀念館) and areas surrounding Taipei City Hall to enjoy the forest of festival lanterns and all the other exuberant fun on tap.

According to the city govt.’s Department of Civil Affairs (民政局), there will be a number of different lantern-viewing areas, and a blend of traditional-style celebrations with newfangled high-tech sound and light wizardry. Among the lantern areas this year will be the “Sun Yat-sen Memorial Hall Theme Lantern Area” (國父紀念館主燈區), “Story Theme Lantern Area” (故事主題燈區), “Traditional Lantern Area” (傳統燈區), “Sea of Lanterns Tunnel” (燈海隧道), “South Plaza Creative Lantern Area” (南廣場創意燈區), and the “National Decorative Lantern Student Competition Area” (全國花燈學生競賽燈區).

The two main venues, Sun Yat-sen Memorial Hall and Taipei City Hall and Civic Plaza, will be linked by a long and gleamingly colorful lantern tunnel. No matter where you are during the festival, you’ll be surrounded by joy-carrying beams of visual pleasure.

Around the two main venues will be traffic controls to accommodate large number of visitors. Drivers should expect traffic congestion and plan a detour while Festival-goers are advised to commute to the site via MRT or public buses. For your best experience, the organizer recommends starting from the main lantern area in the Sun Yat-sen Memorial Hall and work your way to the City Hall and Civic Plaza area.

Note that the Lantern Festival does not only take place at the Taipei Lantern Festival sites. Well-known big temples such as Longshan Temple (龍山寺) and Guandu Temple (關渡宮) also stage decorative-lantern shows, and these are great places for folks from overseas to see up close the traditional religious connections for the Lantern Festival, especially the lantern-lighting rites and associated praying for heavenly blessings.



Those of you who read a bit of Chinese will have noticed the actual Chinese name for Lantern Festival is “Yuanxiao Festival” (元宵節), *yuanxiao* (元宵) being the traditional festival food, eaten in tremendous quantity. *Yuanxiao* are small dumplings with sweet or savory fillings heated in soup, and are also called *tangyuan* (湯圓; lit., “soup rounds”). Their round shape symbolizes family unity and the togetherness of the beloved full-member holiday reunions—thus their popularity. The sweet fillings used include pastes made from sesame, beans, dates, and peanuts; the savory versions feature minced meat.



2

The dumplings are made two ways. With one you add water to glutinous-rice flour and rub to form the wrapping skin, then add the filling in the center and rub between your two palms to close the skin and form a ball. With the other, you first mix the ingredients into small pieces, then place them into a shallow bamboo sieve-like basket that contains glutinous-rice flour. You then rock the basket vigorously with both hands, sprinkling water continuously, to make filling and flour forming full, round balls.

During each Lantern Festival period, various Taipei shops will set up stands outside their doors where master kitchen craftsmen will use the rocking method to create the freshest-possible dumplings before your eyes. They are sold as soon as ready, and people will wait patiently in long lines to get their hands on them. You'll also see the hand-rubbing method being used at many booths in the city's traditional markets. If you want to buy just-crafted *yuanxiao* or *tangyuan* to take home and cook by yourself, a number of special shops of venerable heritage stand ready to happily send you home: Sheng Kee Foods (生計食品), Tsai Wan Shing (蔡萬興), Nanyuan (南園), and Huayuan (華園) are the most notable among them. If you find yourself craving to sit down for a piping-hot round of *tangyuan* soup, here's where to go: Taiyi Milk King (臺一牛奶大王), Ju Ru Restaurant (九如商號), Chen Kang Hao (政江號), Shuanglian Sweet Rice Ball (雙連圓仔湯).



3

1. The 2011 Taipei Lantern Festival will be a spectacular mix of many different decorated-lantern areas and a mix of traditional celebration elements and modern high-tech dazzle.
2. One of the favorite rites of the Lantern Festival is the lantern-riddle contests, bringing great happiness and great prizes too.
3. An indispensable Lantern Festival tradition is eating *tangyuan*, symbols of family-reunion perfect harmony.

Information

2011 Taipei Lantern Festival 2011臺北燈節

Schedule: 2/11~2/20

Venue: Grounds of Sun Yat-sen Memorial Hall, Taipei City Hall and Civic Plaza

Lantern Lighting Ceremony: 18:00~23:30

Transportation: Take MRT Bannan Line to Sun Yat-sen Memorial Hall Station or Taipei City Hall Station; or take any of the many public buses passing by Sun Yat-sen Memorial Hall or Taipei City Hall

Where to Buy Yuanxiao

Sheng Kee Foods (生計食品)

Add: 15, Sec. 3, Roosevelt Rd. (羅斯福路3段15號)

Tel: (02) 2363-2085

Nanyuan (南園)

Add: Stall No. 192, Nanmen Market, 8, Sec. 1, Roosevelt Rd. (羅斯福路1段8號, 南門市場192號攤位)

Tel: (02) 2396-3852

Huayuan (華園)

Add: Stall No. 68, Nanmen Market, 8, Sec. 1, Roosevelt Rd. (羅斯福路1段8號, 南門市場68號攤位)

Tel: (02) 2351-0038

Tsai Wan Shing (蔡萬興)

Add: 16-6 Fuzhou St. (福州街16-6號)

Tel: (02) 2351-0848

Where to Eat Yuanxiao

Taiyi Milk King (臺一牛奶大王)

Add: 82, Sec. 3, Xinseng S. Rd. (新生南路3段82號)

Tel: (02) 2362-3172

Ju Ru Restaurant (九如商號)

Add: 69, Sec. 4, Ren'ai Rd. (仁愛路4段69號)

Tel: (02) 2751-7666

Chen Kang Hao (政江號)

Add: 109, Sec. 2, Jinshan S. Rd. (金山南路2段109號)

Tel: (02) 2395-2109

Shuanglian Sweet Rice Ball (雙連圓仔湯)

Add: 57, Lane 223, Sec. 4, Zhongxiao E. Rd. (忠孝東路4段223巷57號)

Tel: (02) 8771-9815

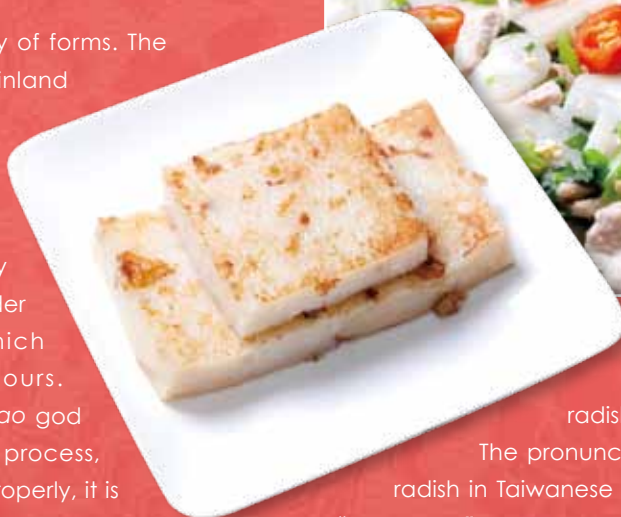
糕

Lucky *Niangao* to Bring in the Chinese New Year

The Chinese Lunar New Year is the biggest traditional celebration of the year in Taiwan. Family members spread about in far-flung places make sure to get home for the holidays, for the family reunion at this time. Great happiness is felt by all while feasting on favorite family dishes and numerous foods loaded with auspicious symbolism. Shopping for all these goodies and other items needed for the big celebration starts in the twelfth lunar month, and one of the most important purchases is *niangao* (年糕). *Nian* means “year” or the “new year,” and *gao*, which means “cake,” is a homonym for the character, “high” (高)—so having *niangao* in the home invites your family to “rise up higher every year” or *nian nian gao sheng* (年年高升), and is also presented as part of the sacrificial offerings to ancestors and gods.

Niangao come in a variety of forms. The type from south Fujian in mainland China, where most Taiwanese immigrate from, is a sweet cake called *tianguo* (甜粿) in Mandarin and *di gueh* in Taiwanese. It is made by kneading glutinous-rice powder with granulated sugar, which is then steamed for 3~4 hours. Tradition has it that the *niangao* god looks on during the cooking process, and if the cakes do not rise properly, it is believed the coming year must be one of deflated fortunes as well.

Another standard on the New Year table is a type of steamed sponge cake, usually slightly sweetened, called *fagao* (發糕), made with baking powder, wheat powder, and glutinous-rice powder. The little cakes look like flowers in bloom, and the word *fa* means to emit or send out, so the auspicious idea is that their presence encourages wealth to burst into bloom for the family. *Luobogao* (蘿蔔糕) is a savory type of *niangao*, *luobo*



a type of white radish, made with the addition of radish slices and Penglai-rice milk.

The pronunciation of the words for white radish in Taiwanese sounds like an expression for “good luck” in Mandarin Chinese—*hao cai tou* (好彩頭)—making this a most auspicious New Year treat.

Early families who came to Taiwan from mainland China after 1949 brought the tradition of a type of cake called *songgao* (鬆糕), which translates literally as “loose cake.” Sugar, red bean, and sesame are added to rice flour and steamed, making a treat that is light in texture and not too sweet or in any way greasy. Another type of New Year cake is Ningbo *niangao* (寧波年糕), in which rice flour and glutinous-

rice flour are mixed. The cake is cut into slices, savory condiments are normally added atop, and the item is either sautéed in a wok or boiled, creating a treat that is pleasingly chewy.

All *niangao* take a good deal of time and efforts to create, with the result that most modern ladies leave the joy of preparation to others, especially as the Chinese New Year run-up brings more than enough other things to do. Thankfully, many traditional bakeries still exist to satisfy this need. Today, such favorite *niangao* selections as *luobogao* and Ningbo *niangao* are craved, and supplied year-round.

In Taipei's bustling and big Nanmen Market (南門市場) is Ho Shing Cakes (合興糕糰店), a venerable shop dedicated to the faithful production of *niangao* in the time-honored fashion. Specially recommended are the Shanghai *songgao* and sweet osmanthus *niangao*. Supply cannot meet the insatiable demand here during the New Year season, so do get here early. The Grand Hotel's (圓山大飯店) red-bean *songgao* was a favorite with Madame Chiang Kai-shek, and is painstakingly prepared the old-fashioned way over a two-day period, which means the hotel needs you to reserve your taste-testing opportunity in advance.

One great place to try out Ningbo *niangao* is Kao Chi (高記), where the mud-crab fried *niangao* is specially recommended. At Chiu Ru (九如) the *crème de la crème* are the snow-cabbage fried *niangao* and the white wet-milled *niangao*, with either the jade-green of snow cabbage or the orange-yellow of crab roe added. Whatever the combination, the dish is pleasing to both the eyes and palate.

If you'd like to check out the down-home tastes of the Taiwan homestead, head off for Lin He Fa Rice and Rice Cakes (林合發油飯裸店) in Yongle Market (永樂市場). The signature dish here is *youfan* (油飯), often translated as either “glutinous oil rice” or “sticky rice” and tasting much better than the name sounds. But as Chinese New Year approaches, all the *niangao* standards are rolled out, including *tianguo*, *luobogao*, and taro cakes. All are hand-made, and delicious-ness is guaranteed. Getting a first-hand taste for the rich Chinese New Year ambiance in Taipei is easy when you can so easily dig into the tastes of so many of these *niangao* traditions! 100

1. *Fagao* (above) and sweetened *niangao* (below) are two must-prepare New Year snack treats in Taiwan.
2. At Chiu Ru the *crème de la crème* is the snow-cabbage fried *niangao*, best capturing the soft and chewy style of China's Ningbo.
3. *Luobogao* sounds like a “good luck” expression in Mandarin Chinese—*hao cai tou*—making this an auspicious New Year treat.
4. At Kao Chi, the mud-crab fried *niangao* is specially recommended, using Ningbo-style *niangao*, blue crab, and black soybean sauce in an authentic Shanghai-flavor culinary creation.

Information

Ho Shing Cakes 上海合興糕糰店

Add: 8, Sec. 1, Roosevelt Rd. (Nanmen Market)
(羅斯福路1段8號; 南門市場內)

Tel: 2321-4702

The Grand Hotel (Yuan Yuan Restaurant)

圓山大飯店 (圓苑餐廳)

Add: 1, Sec. 4, Zhongshan N. Rd. (中山北路4段1號)
Tel: 2886-1818, ext. 1241

Kao Chi 高記

Add: 1 Yongkang St. (flagship outlet)
(永康街1號; 永康總店)

Tel: 2341-9971

Chiu Ru 九如商號

Add: 69, Sec. 4, Ren'ai Rd. (仁愛路4段69號)
Tel: 2751-7666

Lin He Fa Rice and Rice Cakes

林合發油飯裸店

Add: 21, Sec. 1, Dihua St. (Yongle Market)
(迪化街1段21號; 永樂市場內)
Tel: 2559-7618



年

Chocolate Fondue

For a Valentine's Day of Sweet Memories



1

On the Western Valentine's Day, Feb. 14, which is avidly celebrated by passionate Taipei folks, what better way to sweeten your love for that special someone than a pot of hot chocolate fondue on what will be a cool winter's night? Taipei's culinary inventors have come up with numerous variations on the theme, allowing you to choose fresh fruits, handmade pastries, and even cotton candy and ice-cream to dip into your thick, rich, yummy chocolate sauce—intensifying the sweet sensation. You might well feel intoxicated by the luscious desires that are aroused.



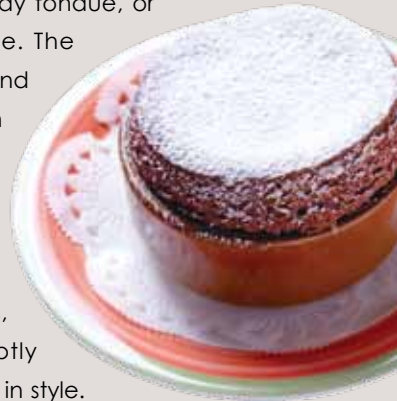
2

Elegance in the Inimitable European Style

Schwarzwald Deutsche Spezialitäten (黑森林德式美食), a German speciality restaurant, introduced its German style chocolate fondue, Schokolade Fondue. This fondue is built around bricks of dark German chocolate specially imported from the motherland, with fresh milk, butter, and rum mixed together and slow-heated to create what is a fragrant and very mellow sauce. Its presentation in a delicate porcelain pot is decidedly romantic, as is the presentation of the colorful fruits to be dipped, delicately carved by the artistic kitchen talent and bringing your table a romantic and festive atmosphere.

The sweet fruits, ice-cream, and dainty pastries are delivered to your mouth hand-in-hand with the rich, ever so slightly bitter chocolate are a mellifluous duet of taste and texture contrasts.

The Swiss Chalet (瑞華餐廳), located along Sec. 4 of Nanjing E. Rd.(南京東路), is a venerable and trusted name in business for more than 30 years. Best known for its authentic Swiss-style cheese fondue and its warm and bustling folksy atmosphere, a good choice for Valentine's is the popular Burgundy fondue, or the irresistible chocolate fondue. The sauce base is made with bitter and sweet chocolate imported from Switzerland, accompanied by whip cream and fruit wine or rum. The taste of this finely crafted liquid confection is light and free of sickly sweetness, hosting considerable depth, aptly described as classically European in style. A choice of fresh fruits, breads, and other well-matched treats are lined up for their dates with their chocolatey fate.



3

1. Schwarzwald Deutsche Spezialitäten has chocolate fondue presented in a delicate porcelain pot decidedly romantic in look, as is the presentation of the colorful fruits to be dipped, bringing your table a romantic and festive atmosphere.
2. The Western Valentine's Day and chocolate fondue go hand in hand, a naturally romantic pairing.
3. The Swiss Chalet's signature sweet offerings, its special chocolate soufflé available for limited-time taste testing.
4. The Swiss Chalet's chocolate fondue has a sauce made with chocolate imported from Switzerland, accompanied by rum and sweet fruits—a winning combination.

4



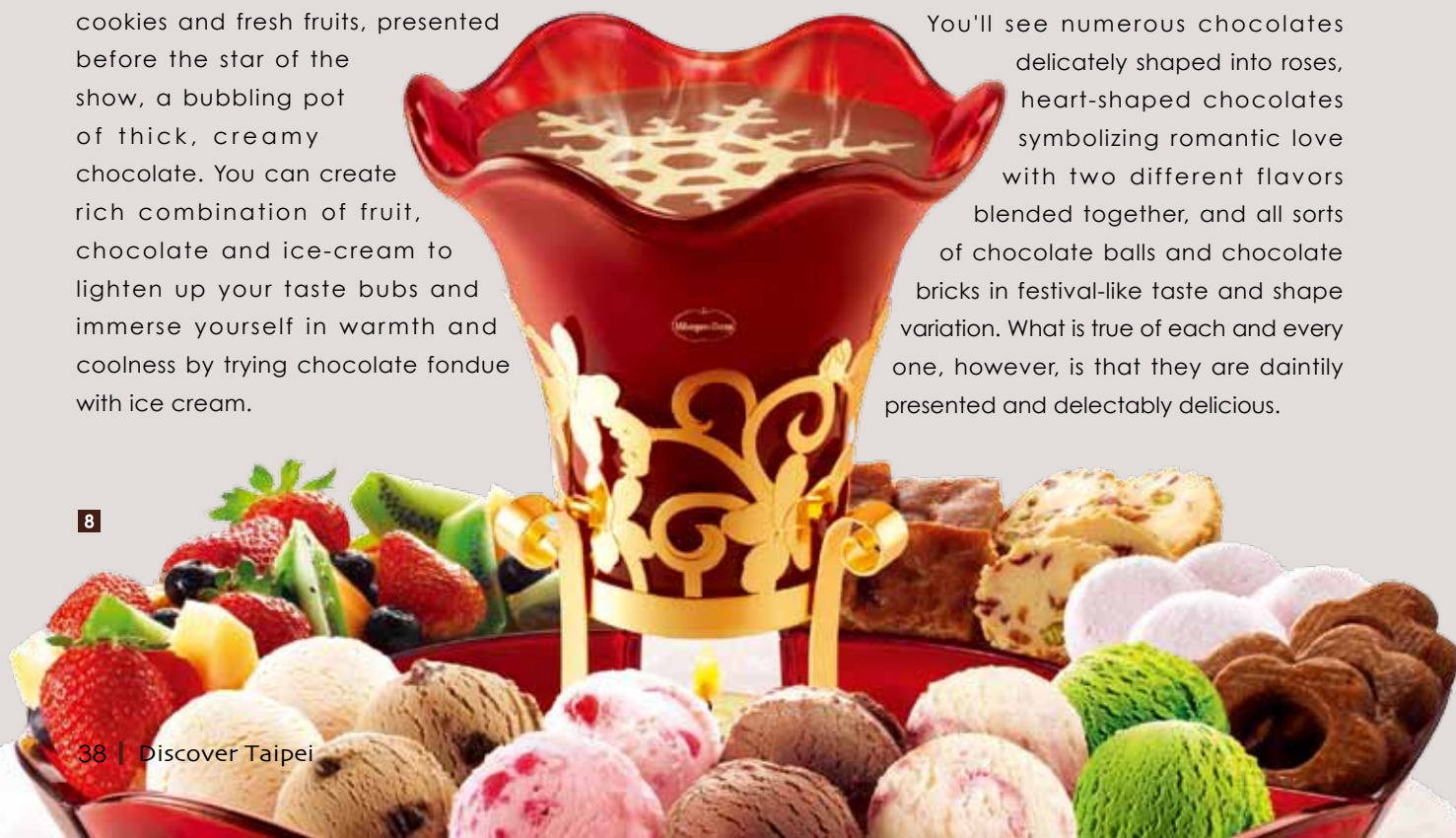


Ice and Fire Feast of the Senses

When hot, bubbling chocolate meets cool, icy ice-cream, what sort of passions and tastes are aroused? This winter, the iconic purveyor of American ice-cream, Haagen-Dazs, is offering a new ice-cream and chocolate fondue, matching its six most popular ice-cream flavors with European-style cookies and fresh fruits, presented before the star of the show, a bubbling pot of thick, creamy chocolate. You can create rich combination of fruit, chocolate and ice-cream to lighten up your taste buds and immerse yourself in warmth and coolness by trying chocolate fondue with ice cream.

Here's another way to enjoy the hot 'n' cold sensations. Down the snug alleys on the east side of the city is the chocolate specialist Casa del Cacao (可可府), a cozy niche of gleaming white walls and attractive display windows choc-a-bloc with handcrafted chocolate of mouth-watering variety.

You'll see numerous chocolates delicately shaped into roses, heart-shaped chocolates symbolizing romantic love with two different flavors blended together, and all sorts of chocolate balls and chocolate bricks in festival-like taste and shape variation. What is true of each and every one, however, is that they are daintily presented and delectably delicious.





A Magical Fondue Pot that Takes You Around the World

In 2002, Taipei's Yongkang St. (永康街), and all of Taiwan, saw their first shop dedicated to the drinking of chocolate. The name is Chocoholic (巧克哈克), and chocoholics have ever since been coming in droves. The shop has introduced over forty hot and cold choco-beverages of different style and taste sourced from around the planet, exploring the full range of the tongue's taste-habitats, from bitter to spicy hot to sour to sweet. At the same time, the 3000-year story of chocolate is told of its fateful journey from South America to Europe.

The most romantic fondue choice here for the generation of sweet memories on Valentine's Day is made with dark French chocolate. Added to this is a worldly bazaar of choices from many different lands, including a fruit tray of seasonal fruits, American-style candy floss and extra-creamy Italian ice-cream, and a bread tray of French-style Brioche (milk) bread, German-style doughnuts, Italian-style bread sticks and cheese-flavored soda biscuits. A trip around your trays tastes almost as good as a trip around the world. 🌍

5. Taiwan tennis star Lu Yen-hsun and his wife sharing the Haagen-Dazs chocolate fondue, immersed in their own world.
6. The chocolate fondue at Casa del Cacao comes with fruits, cotton candy, and even hand-crafted puffs; also available are hand-made rose chocolates specially made for Valentine's, the perfect gift for you know who.
7. The sparkling-white décor at Casa del Cacao gives even greater emphasis to the dark and mysterious riches chocolate possesses.
8. Hot chocolate, cold Haagen-Dazs ice-cream added, creates a splendid taste, texture, and fragrance contrast.
- 9-10. Chocoholic, a big hit with the people it is named after, has a wide variety of dipping choices for its chocolate fondue--fruits, cotton candy, breads, cookies, ice-cream--creating a bubbling party of well-matched friends in your pot.



Information

Schwarzwald Deutsche Spezialitäten 黑森林德式美食

Add: 10, Lane 112, Sec. 1, Anhe Rd.
(安和路1段112巷10號)

Tel: (02) 2325-3506

Swiss Chalet 瑞華餐廳

Add: 47, Sec. 4, Nanjing E. Rd. (南京東路4段47號)

Tel: (02) 2713-0502

Haagen-Dazs (Tianmu flagship outlet)

Add: 1, Lane 18, Alley 38, Tianyu St.
(天玉街38巷18弄1號)

Tel: (02) 2874-5223

Casa del Cacao 可可府

Add: 8, Alley 5, Lane 170, Sec. 4, Zhongxiao E. Rd.
(忠孝東路4段170巷5弄8號)

Tel: (02) 2731-2609

Chocoholic 巧克哈克

Add: 2, Lane 7, Yongkang St. (永康街7巷2號)

Tel: (02) 2321-5820

Preserving Memories in Architecture – Treasure Hill Artist Village

A great many of Taipei's citizens can clearly recall living in housing that could at best be described as simple and humble in their youth. For many, a move to better homes came with Taiwan's improving economy, and years later when they ventured back, they found their original dwellings had been cleared away in the march of progress. With the march of time, memories of their humble yet happy homes began slipping away...

The peak period in the development of the Treasure Hill (寶藏巖) community was the 1960s through 1980s. Access to much of the area was rigidly controlled for some time because of the presence of water-supply and military facilities, and though the bustling Gongguan (公館) commercial district was just a stone's throw and a few narrow alleys away, this place was a world away. Poor families of limited means erected over a hundred illegal buildings, seemingly

strewn at random on the Treasure Hill slopes, and though the abodes were rough and crude the tightly clustered community was a happy place, a tucked-away, slow-paced corner in a busy and pulsating metropolis. The special way of life here, of slow change and common folks, is "recorded" and preserved in the very existence of this oasis of narrow alleys, and in special displays.

Directors of numerous well-known Taiwan films have used the area for shoots in the past, including *Dust of Angels* (少年耶，安啦！), *Goodbye, South, Goodbye* (南國再見，南國), and *Gangland Odyssey* (大頭仔). In the past, famed Taiwan director Hou Hsiao-hsien (侯孝賢) has proclaimed Treasure Hill a priceless time capsule, and in 2006, the travel section of the *New York Times* declared this enclave among the most distinctive scenic spots in Taipei.





1



2

The Unveiling of Treasure Hill Artist Village

Years back, the illegal constructions in the Treasure Hill area faced issues of demolition, resident relocation and preservation. Residents argued for the right to stay. In the end came realization that active preservation and enhancement of this unique district could give a new perspective on what city living could mean to the denizens of this metropolis, and in Oct. 2010, after metamorphosis, the village in new guise, now named Treasure Hill Artist Village (寶藏巖國際藝術村), was unveiled.

In 2004, the city government's Dept. of Cultural Affairs registered Treasure Hill as the city's first official "historical community." After extensive research and planning, renovations were launched in 2006, with minimal disruptive changes to existing homes. The area now has three main components: original Treasure Hill homesteads, artist-village live-in studios, and an international Youth Hostel. The original illegal structures today remain standing, serving in a new role, preserved as a now-cherished slice of life from the city's memorable past.

The homestead area has 22 original residences, their families now moved back and settled in comfortably. The artist village has 17 studios for artists in residence, 14 micro-community units, 2 rehearsal studios, and 3 exhibition spaces. Spread throughout the community's tight lanes and alleys are plazas of various sizes and 15 international youth hostel units. The aim behind this initiative is to create a new community with fluid interaction between art and community, with the hope that artists, creative culture business operators, and residents and hostel guests each account for 1/3 of the community. (Note that the registration system for the youth hostel is still being set up, so the facilities are not yet open for occupancy.)



3

1. The community's distinctive landscape is defined by gentle slopes, stairways, and architecture seemingly strewn at random.
2. In the Cross Plaza, a French artist is guiding students to do the artistic creation.
3. The community's furniture contributions, collectively entitled City Yeast Yellow Chair Project 3.

Art in Residence, Creative Vitality from Life in a Heritage Community

Walking along Dingzhou Road (汀州路) Lane 230, parallel to the piers of Fuhe Bridge, you will see colourful, playful depictions of iconic characters from Taipei



4



5



6

4. Beside the piers of Fuhe Bridge, on the wall here are colorful, playful depictions of iconic characters from Taipei life, the art called A Live City Model
5. Wang Li-xin's (王立心) village exhibit, entitled Sun Drying Clothes
6. One of City Yeast Yellow Chair Projects called "Short a Tendon"
7. Tad Pole Point is a favorite creative-design rest and dining area with visitors.



7

life that are instantly recognizable. This work is called A Live City Model (城市好風光), created by Pan Yu-Yo (潘羽祐). A little further you will come to Baozangyan (Treasure Hill) Temple (寶藏巖寺), the origin of the community's development, and you'll notice that it, too, has undergone renovations. Built during the Qing Dynasty along an important water-transportation artery, it was once one of the key places of worship in the city's southern sector, and today still has important service watching over and protecting local inhabitants. On one side of the temple courtyard you'll see a guard office; this is the entrance to the artist village, where visitors are required to register before entering during the village's opening hours.

You are free to amble about anywhere you please, but don't disturb the local residents as they go about their daily routines. Red, yellow, and green markings have been placed on walls to guide you around. As you meander along the winding alleys, signage on doors clearly indicates if a place is open to public access or if it is a private home or a studio/workshop. Interaction with the artists in residence is specially set up for weekends and activity days. During the week, lose yourself in the small labyrinth of tight lanes and alleys, then find yourself again at corner intersections decorated with bright works of public art.

During your walk, you'll encounter a series of installation-art yellow chairs, placed here and there along alleys, in small plazas, and in vacant lots/buildings. These are collectively called City Yeast Yellow Chair Project 3 (六張椅子 / 六首詩), created by six artists as part of the citywide City Yeast public-space design project, adorned with poems and sporting clever names such as "Short a Tendon" (少一根筋) and "Ascend the Throne" (登寶座). Among the public spaces that have been created, Cross Plaza (十字廣場) is a good example; this was site of a number of old residences declared unsafe and demolished. Beside this plaza, look for No. 5, Alley 51; this is one of the village's micro-community units, with the second through fourth floors now occupied by metalwork artist Lu Hsueh-fen (呂雪芬), photographer Gan Yao-jia (甘耀



嘉), and the musical group Zenkwun (神棍樂團). In the village's cozy café, Xunbao Fang (尋寶坊), you'll find a fine collection of artifacts collected from the old houses before they were demolished. All the spaces in this village are tight and compact—not like the romantic, sprawling artist studios of your imagination, but the concentration of so many artists here brings great ferment and inspiring production. Anyone interested in using the village as their creative base, local or from overseas, can access the artist-in-residence platform AIR Taipei (臺北藝術進駐), set up by the Taipei Culture Foundation (臺北市文化基金會).

A Space of History and Character, Itself an Exhibition

The Historical Facades (歷史斷面), which records the changing housing styles of the village over the years, is perhaps the most representative work of landscape art. The flooring, ceramics, and other materials used by residents building over two and even three generations powerfully tells the story of the comings and goings of people in one neighborhood in one corner of one big city—the story of life, isn't it? 📍

8. In Treasure Hill Artist Village, the Creative Circle Improvement Plan by CITY YEAST, includes international case, 2200 urban creative design ideas, and green urban content.
9. The Historical Facades, which records the changing housing styles of the village over the years, is perhaps the most representative work of landscape art.

Information

Treasure Hill Artist Village

寶藏巖國際藝術村

Hours: Tues-Fri 15:00-22:00; Sat, Sun 11:00-22:00 (closed Mon)

Tours: Tues-Fri 15:00, 16:00, Sat, Sun 14:00, 15:00, 16:00; call in advance to book foreign-language guide service

Add: 4-8, Alley 37, Lane 230, Sec. 3, Dingzhou Rd.

(汀州路3段230巷37弄4-8號; MRT Gongguan Station, Exit No. 1; walk to end of Lane 230)

Tel: (02) 2364-5313

Website: www.artistvillage.org

Until 1/30	Exhibition of Works by Assignment Theatre Group and Heti Elementary School Studio	寶村29號 29 Treasure Hill
Until 1/30	A Plan Concerning Sunshine Rubbing – Hang Drying - Wang Li-hsin, artist in residence	寶藏巖內37弄1號 1, Alley 37, Treasure Hill
Until 2/27	About a Photo – Fan Hsiao-lan, artist in residence	閣樓展覽室2樓 2F, Gelou (Attic) Exhibition Studio
Until 1/30	Exhibition by Artist in Residence Ye Yu-jun	閣樓展覽、青年會所 Gelou Exhibition Studio, Youth Hostel
Until 2/27	Transplants: Doors and Windows – Installation Exhibit by Gan Yao-jia	寶藏巖內14弄6之1號2F 2F, 6-1, Alley 14, Treasure Hill
1/21~2/27	Exhibition by Artist in Residence Wu Fang-yi	十字藝廊、廣場 Cross Gallery, Plaza

Old Places with New Faces



1

A Burst of Color and Energy Transforms Wanhua's 406 Plaza

The community of Wanhua (萬華) in Taipei's southwest sector, originally named Monga (艋舺) in Taiwanese and still so called by many locals, was the birth point of this city. The streets are infused with history—the narrow old thoroughfares, the temples, the heritage shops. Old-times are wrapped up in a blanket of the familiar, and travelers who've come from afar get a window into yesteryears. Now, however, within this old-feel setting something very new, very colorful, very modern, and very different has been created at 406 Plaza (406廣場), which is now inhabited by a gigantic six-story-high Transformer and a village of modern large-scale installation artworks.

406 Plaza is located at the corner of Zhonghua Road and Changsha Street. This was once the site of a Japanese Buddhist temple, Nishi Honganji Temple (西本願寺), built during the Japanese colonial period (1895-1945), a key site for worshipping Japanese nationals, overlooking and protecting Japanese soldiers, and also performing funeral rituals. Unfortunately, in 1975, the wood-built main halls and adjoining mausoleum went up in flames. Not until 2006, as part of a newly unveiled plan to protect heritage sites, did the Taipei City Govt. declare the surviving bell tower and meeting hall official city historical relics, formulating renovation plans designed to bring the spirit and as much of the physical presence of the original complex as possible back to life.

2

These renovations will begin at the end of February 2011, and before then, the city's Dept. of Cultural Affairs and the Museum of Contemporary Art Taipei are using the site for a most unusual exhibition of public arts entitled ArtSupply, designed both to liven up the space and to draw public attention to the historical-relic preservation efforts going on here. Seven teams of creative artists, implementing the concept of "bringing art to public spaces," have been given free reign to their youthful artistic visions. The most conspicuous work is undoubtedly the giant "Mayday's DNA" (變形DNA), a gold-colored Transformer created by popular

harmonized with the history-hiding ruins and the park's green lawns.

The organizers have also dreamed up a series of attractive theme events to complement the artworks entitled "Urban Music Island" (都市樂島效應) that includes creative bazaars, art workshops, musical performances, food carnival, street-performer competition, and many more.

1. "Symphony of Light and Flower" by Onion Hsu has lanterns disguised as flowers, colorfully embellishing the plaza's foliage.
2. The giant "Mayday's DNA," a gold-colored Transformer created by popular musical band Mayday.



3



5



6



4



7

musical band Mayday (五月天樂團). Another work created by a local musical group, the 13 Band (拾參樂團), is a graffiti creation with an in-your-face title, "Fat People" (吃胖的人).

Among the other works, all created by dynamic local contemporary artists: "Symphony of Light and Flower" (意外的風景—406號廣場幻想曲) by Onion Hsu (徐揚聰), an acrylic work with lanterns disguised as flowers; "Ripples of Forest" (森之漾), by Wang Zhen-wei (王振璋), a landscape installation using driftwood pieces in great numbers; and "Flower KaGa" (卡卡·花), by Yeh Yi-li (葉怡利), a tremendously oversized bird-shaped inflatable sculpture. Whether sparkling in the sunlight or illuminating under the lighting design at night, enter this site and you enter a fairytale world of splendor. The 406 Plaza site, long locked in slumber, has been brought back to dazzling life with art, lit up with bright artistic visions

3. "Colorful Flowers Blossom" uses the official city flower, the azalea, as inspiration, bringing five of the blossoms together to form sculpted seating.
4. A graffiti creation with an in-your-face title, "Fat People," created by a local musical group, the 13 Band.
5. An acrylic work with lanterns disguised as flowers; "Ripples of Forest," by Wang Zhen-wei
6. Artist Andy Yen's graffiti creation "Organs without Body."
7. The 406 Plaza is centered on the remains of an old Japanese Buddhist site, Nishi Honganji Temple.

Information

ArtSupply 氣象萬千

Time: Until 2/28

Venue: Wanhua 406 Plaza (intersection of Sec. 1, Zhonghua Rd. and Sec. 2, Changsha St., near Exit No. 1, MRT Ximen Station; 西門町中華路1段與長沙街2段交岔口, 近臺北捷運西門站1號出口)

Tel: (02) 2552-3721

Website: www.mocataipei.org.tw

Spring, Season of Dancing Cherry Blossoms –

The Yangmingshan Flower Festival Is ON!

The long-awaited, much anticipated 2010 Taipei International Flora Expo is now underway and riveting the city's attention, but there is also another major local flower celebration held each year that brings great satisfaction to the senses, Yangmingshan Flower Festival (陽明山花季). It kicks off on Feb. 18, and though nobody ever needs a special reason to ascend magnificent Mt. Yangming, this is it—the Yangmingshan world of spring warmth and exuberant blooms!

Yangmingshan is often referred to by Taipei residents as their “backyard.” Over the years, about 2,000 cherry trees and

8,000 azalea trees have been planted here. You'll also enjoy blooms of many other sorts—camellias, peach blossoms, and Chinese hydrangeas. From Feb. 18 to March 20, however, the starring trio is the Yoshino cherry, Showa cherry, and mountain cherry (Taiwan or Formosa cherry), which burst into bloom in glorious sequence, carpeting the mountain with bright pastel colors. Generally, the Yoshino cherry blossoms at their peak in the first two weeks of the festival, the Showa flourishes half way through the festival, and the mountain cherry blossoms right before the curtain lowers.

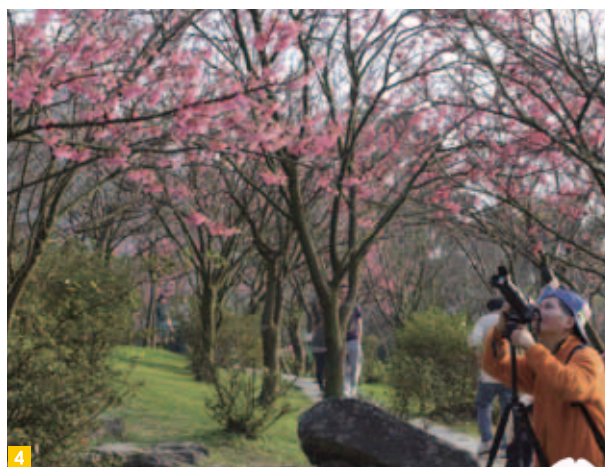
The plaza of the iconic Flower Clock is overfilled during the festival with tens of thousands of potted flowers in landscaped formation. This is the perfect spot for those who may not be so keen on climbing up and down the slopes and trails. For a little exercise walking from the park entrance, you will be rewarded by the sight of a sea of cherry blossoms, and you can delve into the romantic cherry-blossom forest path here. On weekends and holidays during the festival period, a stellar schedule of cultural-arts performances have been planned, for the event is being cultivated as a dual and



complementary feast of nature's arts and the performance arts.

During the festival, flower-lovers weave through the national park like great migrations of butterflies on the fly. The numbers can top a million. On weekends and holidays, strict traffic controls are in effect, and the park administration strongly advises that flower-lovers use public transportation to avoid traffic-jams and parking headaches. In addition, note that in springtime, the weather can be unpredictable, so be sure to bring a coat/jacket as well as raingear. 🌧️

1. The Flower Clock plaza is a Yangmingshan landmark and a favorite place to rendezvous during the flower festival.
2. Yangming Park is home to a forest of cherry blossoms, a world of lovely floating color and romance.
3. The Showa cherry blossoms sparkle like snow.
4. Yangmingshan is everywhere a canvas of cherry-blossom beauty, and everywhere admirers wield cameras tried to capture this beauty.



Information

Yangmingshan Flower Festival 陽明山花季

Time: 2/18~ 3/20

Venue: Yangmingshan National Park

Tel: (02) 2861-8975 (Yangming Park Visitor Center)

Website: www.pkl.taipei.gov.tw

Transportation:

1. Public bus: Take the MRT to Taipei Main Station or the Yuanshan, Jiantan, Shipai or Beitou stations and transfer to bus No. 260 or Red 5.
2. Flower Festival shuttle buses: Take no. 126 from Taipei Main Station, No. 127 from MRT Yuanshan Station, No. 128 from MRT Shipai Station, and No. 129 from MRT Beitou Station, venue-loop bus route nos. 130 and 131, Leisure Buses No. 108, 109, 110, and 111.

※ During the festival, weekend/holiday traffic control will be in effect on Yangde Blvd.(仰德大道); it is recommended that public transportation be used.

“Reading – The Path to Wellbeing”

The 2011 Taipei International Book Exhibition

To most, Bhutan, situated at the eastern end of the Himalayas between China and India, is a veiled land of mystery. But there is in fact little mystery—the people of this land stress spiritual contentment over moneyed success, GNH (Gross National Happiness) over GNP, and is ranked first in Asia in surveys of overall happiness and contentment. At the 2011 Taipei International Book Exhibition (TIBE), the theme is “Reading – The Path to Wellbeing” (閱讀，幸福進行式), and the exhibit will feature Bhutan for its model of happiness and wellbeing. Through “reading,” the event presents the starting point on the path to enlightenment and contentment.

The TIBE will occupy halls 1, 2, and 3 of the Taipei World Trade Center from February 9 to 14, and a “Read Out Loud Festival” (朗讀節) is being set up, with notable writers from Taiwan and around the world to be on hand giving reading sessions of their own writings, deepening the “love of the word” of listeners. The main attraction in Hall 1 will be an exhibit on Bhutan, and will also be home to a large section on Digital Publishing (數位出版主題館), with all the latest trends and developments on display. The Taiwan Publishing Pavilion (臺灣出版主題館) will celebrate the centennial of the founding of the Republic of China, and the Young Creators Pavilion (青年創意館) is designed as a showcase encouraging breakthrough designs and publishing initiatives by bold new entrepreneurial talent.

Hall 2 has anime as its focus, with many big-name comic book creators, writers of books for young readers, and voice actors scheduled to be on hand. Hall 3 is focused on the family,



1



2





with pavilions dedicated to picture books and digital children's books; there will even be a section presenting the latest and greatest in stationery. Those in love with the world of the written word—the fact you're reading this magazine means you're one of the lucky—will be blessed by the display of millions of books and about 500 related cultural events in what will be a carnival celebrating the joys that reading brings.

Getting to meet favorite writers face to face is always the highlight of a book-show visit for book-lovers. As always, a lot of the biggest names in publishing will soon be on their way to Taiwan for the 2011 show, and perhaps the most exciting news for readers is the attendance of Jostein Gaarder, author of *Sophie's World*—a title that has sold 30 million copies. Gaarder will be meeting fans and specially introducing his newest work, *The Castle in the Pyrenees*. Creating just as big a stir as Gaarder is the confirmation that Dan Millman, author of the popular *The Journeys of Socrates*, will be in town to introduce a new illustrated version of the book for juveniles. All in all, more than eleven countries will be represented by their leading illustrators, children's book authors, animators, writers, and publishing-industry professionals in special TIBE events—a unique chance to both explore the real, professional worlds they inhabit, and the imaginary and stimulating worlds they create.

In 2010 the Hong Kong magazine *Books4You* (讀書好) proclaimed the Taipei International Book Exhibition Asia's most attractive. Many

book-lovers already seem aware of this, for the 2010 event set another record for attendance, at 520,000. This year's event will open on the Western Valentine's Day, and to celebrate all those lucky folks who have found romantic love, the charming “Couples” activity will be held. Whether coming alone or with that special someone, you will find the perfect match in the blissful joy and contentment of the TIBE world of titles. Let the hunt begin! 📖

1. Hall 3 is focused on the family and kids, joys of reading and games playing.
- 2-3. Last year 520,000 people visited the TIBE, a new record.
4. The TIBE organizers are bringing in many of the world's leading authors, who will meet their admirers and attend autograph sessions.
5. Bhutan is this year's theme country, with spectators introduced to the world's Gross National Happiness leader.

Information

2011 Taipei International Book Exhibition

2011臺北國際書展

Time: 2/9~2/14

Hours: 2/9~2/10 10:00-18:00 (2/9 Hall 1 limited to industry personnel) 2/11~2/13 10:00-22:00 (18:00-22:00 Starlight ticket preferential entry) 2/14 10:00-18:00

Venue: Taipei World Trade Center

Hall 1: 5, Sec. 5, Xinyi Rd. (信義路5段5號)

Hall 2: 3 Songlian Rd. (松廉路3號)

Hall 3: 6 Songshou Rd. (松壽路6號)

Tel: (02) 2767-1268

Website: www.tibe.org.tw/new

Tickets: Adult ticket NT\$100; Starlight ticket NT\$50

The Fastest Movement on Two Feet – HOCKEY



Blades crisply cut into the clean sheet of ice, with the sound accompanied by the echo from a slap of the puck. In the cool air of the rink, the action on the ice is heated as the pucks fly, scoring chances appearing and then disappearing in the blink of an eye. Crowd whipped into a frenzy as the players race back and forth. Watch a game just one time and you'll be hooked by the speed, intensity, and excitement of ice hockey. For many, merely watching is not enough, and they feel compelled to lace up a pair of skates to try out the joy of skating for themselves.

Ice hockey was invented in Canada after the mid-nineteenth century. In 1980, an avid player came up with the idea of attaching a line of rollers to a hockey boot, and inline skating was born. Soon enough a type of rink was invented that looked just like an ice-hockey rink but with a non-ice skating sheet, and the game of roller hockey was launched. Ice-hockey rinks are expensive to build and operate, and the invention of roller

hockey brought the fun of skating and hockey to hot countries without the huge cost, with the number of skaters and players growing markedly.

In Taipei, there are top-flight facilities for both ice hockey and roller hockey, so whatever your preference, you can soon have the wind rushing through your hair whenever the desire to lace up hits you. The Ice Land (冰上樂園) facility at Taipei Arena (臺北小巨蛋) has public skating and ice hockey, and offers ice-hockey lessons. Instructors are trained, and guide you, under no pressure, through the intricacies of balancing on skates while handling a puck. Over in Taipei's Ximending (西門町) area, the newly opened Polar Bear Ice World (北極熊滑冰世界) also offers hockey lessons and moreover, allows reservations of its small, disco-like rink by private groups for hockey or skating games and parties, bringing you a creative, novel way to get the gang together for the “coolest” fun and frolic.

There are a number of excellent choices for roller hockey enthusiasts, most notably Datong

Sports Center (大同運動中心), Universal Sports (環球兒童運動城), and Dajia Riverside Park (大佳河濱公園). Each accommodates skaters of different caliber and preference. Datong Sports Center, which offers various courses at different schedules, has Taiwan's only international-standard skating rink, an indoor sheet measuring 50 by 25 meters and the best available practice facility for pro-level talent. Universal Sports is designed more for family outings with parents and kids skating together for fun, and offers courses specially designed for youngsters, ensuring they feel safe and comfortable while getting the hang of things. Dajia Riverside Park has a big rink that attracts skaters who love to rush about under the clear blue sky—though note that it is closed for the duration of the Taipei International Flora Expo because this park is one of the exhibit areas.

If you happen to be a seasoned ice-hockey player who thinks there is no chance to tie up the blades and get out for a game with the boys, think again. The Chinese-Taipei Ice Hockey League (中華冰球聯盟) has an island-wide league for local players and leagues which foreign players can join, and also organizes local and international tournaments. Games are played at the Taipei Arena. It's a great way to meet new friends from around the globe while getting in some healthy exercise in fast-paced friendly competition. Come on out, have a look, and then decide how you're going to get yourself involved with the world of Taiwan hockey—“the coolest game on ice.” 🏒



1. The Chinese-Taipei Ice Hockey Federation and Chinese-Taipei Ice Hockey League stage league and tournament competition, which you can join as a team or individual player, a great way to get to know hockey-loving athletes from Taiwan and around the world.
2. Datong Sports Center is the only facility in Taiwan with an indoor rink that conforms to international competition standards, and is thus the best place for professional athletes to practice.

Information

Taipei Arena 臺北小巨蛋

Add: 2, Sec. 4, Nanjing E. Rd. (南京東路4段2號)
Tel: (02) 2578-3536
Website: www.taipeiarena.com.tw

Polar Bear Ice World 北極熊滑冰世界

Add: 8F, 13 Chengdu Rd. (成都路13號8樓)
Tel: (02) 2388-8806
Website: www.wretch.cc/blog/pbiceworld

Datong Sports Center 大同運動中心

Add: 51 Dalong St. (大龍街51號)
Tel: (02) 2592-0055
Website: www.taipeidt.com

Universal Sports 環球兒童運動城 (Only for children ages 4-12)

Add: 34, Sec. 2, Zhishan Rd. (至善路2段34號)
Tel: (02) 2883-6611
Website: www.kidsports.com.tw

Chinese-Taipei Ice Hockey Federation 中華民國冰球協會

Tel: (02) 8771-1503
Website: www.hockey-hotline.com

Chinese-Taipei Ice Hockey League 中華冰球聯盟

Website: www.cihl.com.tw



1



4

Glass art, introduced from mainland China, once enjoyed a renaissance in Taiwan and achieved fame all over the world. Although the practice flourished for a while, it was slowly lost to younger generation because of high electric and gas consumptions, and the difficulty to master glass-blowing techniques. To celebrate the 100th anniversary of the ROC's founding and to help the modern generation learn more about blow-molded glass, the Chiang Kai-shek Memorial Hall (中正紀念堂) is staging the "Kenta Yasui Glass Blowing Art Exhibition" (安井顯太吹製玻璃藝術展), hoping to inspire and foster a new generation of glass artists, and certainly the 100 unique pieces on

Glass Art Maestro Kenta Yasui— *Congratulating Taiwan* **100th** *Birthday* ON THE ROC'S



2



3

display crafted by the Japanese virtuoso, forming a rare and precious salute to the country.

The art of glass-blowing has enjoyed steady and healthy development in the West and is held in high esteem. In the 19th century, French glass artists were profoundly influenced by the Japanese aesthetic outlook, and rolled out a steady stream of exquisite pieces. Japanese collectors clamored to bring these to the Land of the Rising Sun, for the value of these artworks was comparable to the



best works in today's National Palace Museum in Taipei.

Kenta Yasui grew up on the island of Hokkaido, and was in his youth deeply influenced by his mother, a clothing designer, and his father, a painter. At the age of 19, he decided on the glass-blowing arts as his own life course, and it was natural for him to blend the natural artistic landscapes so familiar to him into his works. His depictions were bold, colorful, highly varied, and deeply textured, subverting the normal concepts held in regard to the glass arts, and he soon proved to be a key player in a new and innovative wave. His works incorporate novelties such as cracking and flame painting, uses distinctive transparent coloring and three-dimensional renderings, and unifies the aesthetics of the East into transcendent form. He further combines the superb and meticulous Japanese craftsmanship with European glass-blowing art to pioneer creative concepts. Each work of art, as a result, is a masterful capturing of the artistic visions of the modern world with the deep cultural currents of the old, and his pieces are amongst the most prized possessions in elite collections throughout Japan and Taiwan.

The works in this exhibition show deep affection and love of Taiwan. “Plum Blossom” (梅花) uses the official flower of the ROC as its theme to symbolize the resilience in cold and harsh environments. Here, it is also used to symbolize the arduous process, and ultimate achievement, of glass-art

1. The work has the official flower of the ROC, the plum blossom, as its theme.
2. Kenta Yasui's novel visions for his blow-molded glass works display meticulous artistry and craftsmanship.
3. "May Snow" captures the feel of the snow-white tung-tree blossoms in Taiwan's Hakka-inhabited green mountains.
4. In "Voyager" the ocean-going canoe of the Tao tribe is used to celebrate the vigorous spirituality of Taiwan's indigenous peoples.
5. One hundred of Kenta Yasui's inimitable glass-art works have been selected for showing as his way of saluting the ROC on its 100th birthday.

production. Yasui has a passion for the cultures and symbols of Taiwan's native tribes, and in his work “Voyager” (揚帆) he uses the iconic canoe of the tribe as theme to symbolize the unrestrained and ebullient vitality of these cultures. “May Snow” (五月雪) captures the look of the tung blossoms floating on the breeze in the green mountains areas inhabited by the Hakka people, so thick at times it seems like bright snow is falling in late spring. Another of his works, entitled “Taipei Sky” (臺北天空), captures the powerful image of busy night sky and forest of neon lights that so captivated him when he first landed on Taipei's streets. This work exhibits the fine-line cracking effect that is such a defining characteristic of his oeuvre.

Concurrent to the Kenta Yasui show, the “ROC 100th Anniversary Glass Blowing Heritage Exhibition” (中華民國建國100吹製玻璃薪傳成果展) will also be held at the Chiang Kai-shek Memorial Hall. The exhibit will also feature the kilns and tools used for the blow-molded glass. The contents are rich and varied, and the two shows together form the perfect duo for a day exploring the intricacies of the glass-art tradition and celebration of the country's centennial birthday. 📍

Information

Kenta Yasui Glass Blowing Art Exhibition
安井顯太吹製玻璃藝術展

ROC 100th Anniversary Glass Blowing Heritage Exhibition
中華民國建國100吹製玻璃薪傳成果展

Time: Until 2/8

Hours: 09:00-18:00

Venue: Chiang Kai-shek Memorial Hall
(21 Zhongshan S. Rd.; 中山南路21號)

Tel: (02) 2343-1100, ext. 1059

Website: www.cksmh.gov.tw

20

YEARS OF
DISCOVERING

11

YEARS OF
DISCOVERING

Merging the Cutting-Edge
with the Tradition –

Taiwan International Festival of Arts

This year's Taiwan International Festival of Arts (臺灣國際藝術節) will soon hit the stage, centered around the theme Love and Peace. The venue for this third edition is again the National Theater and National Concert Hall. And this year's celebration of art is being dedicated in honor of the centenary of the Republic of China. Fashionable, vanguard artistic creations from Europe are being brought together with traditional-style works showing roots firmly planted in Taiwan's native soil; on Feb.10, there will be a free performance-art extravaganza thrown on the outdoor plaza to kick things off, highlighting the Taiwan troupes Ten Drums (十鼓擊樂團) and Hung-Sheng Lion Dance Theater (鴻勝醒獅團) along with the French group La Compagnie des Quidams. There can be no better curtain-raiser than this show-stopping barn-burner, so don't miss out.

In total, 17 troupes from 10 countries are being represented in what is a showcase of how the cutting-edge can be married to the traditional, undercutting old expectations and building new ones. In the theatre department, a cross-border theatrical experiment is being conducted; Japanese stage impresario Tadashi Suzuki is adept at bringing creative new innovations to classic works, and is working with Taiwan stage talent on a novel presentation of the French novel *La dame aux Camélias*, by Alexandre Dumas the younger. A selection of popular Mandarin and Taiwanese songs are being presented in the new Taiwanese opera style in this interpretation

of a labyrinthine story of love. In the world of Paris theatre, the name Krzysztof Warlikowski has reached “maestro” status, and the Polish director is bringing his work *(A)pollonia*, which thrilled audiences at the 2009 Festival d'Avignon, to Taipei with his troupe Nowy Teatr Warszawa. This work features use of language and violence in multimedia projections. In *Hôtel Crab*, the hot Spanish troupe TrukiTrek, which incorporates the actors' bodies with puppet parts, uses pantomime and invites adults and kids to join in a comedy ride full of surprises and passions, using theatrical language rather than sound in a manner reminiscent of silent film.

In the dance department, a much anticipated highlight is the staging of *Out of Context - for Pina* by Belgium's les ballets C de la B. The troupe foregoes the normal usage of stage, scene settings, costume, orchestra, and multimedia in favor of the simple language of movement expressed by virtuoso dancers in a paean to beloved dance choreographer Pina Bausch, who passed away in 2009. Bausch's 2001 stage work *Água* is also being presented at the festival, highlighting the fascinating contrasts and complexities of Brazil.

In the music department, the music director of Taiwan's National Symphony Orchestra, Lu Shao-chia (呂紹嘉), is joining hands with Russian pianist Lilya Zilberstein in the performance *Pelléas and*



1. *Sun Rings* will be performed by the Kronos Quartet, a performance synthesizing multiple visual media even sounds collected from outer space
2. Acclaimed Polish director Krzysztof Warlikowski's work *(A)POLLONIA*.
3. *Out of Context - for Pina*, staged by Belgium's les ballets C de la B.
4. Japanese stage impresario Tadashi Suzuki is working with Taiwan theatrical talent on *La dame aux Camélias*.
5. *Hôtel Crab*, put on by the iconoclastic Spanish troupe TrukiTrek.

Information

2011 Taiwan International Festival of Arts 2011 臺灣國際藝術節

Time: 2/10~ 3/27

Venue: National Chiang Kai-shek Cultural Center
(21-1 Zhongshan S. Rd.; 中山南路21-1號)

Tel: (02) 3393-9888

Website: tifa.ntch.edu.tw

Mélisande, and Lu will also conduct for the NSO Opera Concert, *Elektra*. Among the groups from overseas will be the respected Gewandhaus Orchester Leipzig, and the Kronos Quartet, founded 4 decades ago. The Kronos Quartet will be performing the *Sun Rings*, a multimedia performance combining string music, choir, visual art and intriguingly, sounds collected from outer space. *Sun Rings* was commissioned by NASA to develop a music based on sounds collected by their electronic receivers on earth stations and space shuttles, an odyssey of music and the universe. Also not to be missed is

Music for 18 Musicians, composed by the world master of minimalist music, Steve Reich, and here conducted by American conductor Brad Tubman. The performances are in honor of Reich's 75th birthday in 2011.

February 10 to March 27 is a special period for the city of Taipei, graced with 17 stage-performance presentations representing the best of the world's artistic geniuses. Where, do you think, you should be at this time? 📍

Now Showing, in All Its Glory –

The Body Beautiful in Ancient Greece



Greek myth interweaves destiny, man, and his gods. The root of Western civilization, the artworks of ancient Greece today retain their timeless allure and their evocation of human emotion in the visually engaging and thought-provoking capture of the human condition as seen through ancient Greek eyes. Greek artists experimented skillfully in seeking to capture the beauty of the human body in works that range from prehistoric abstract simplicity to, much later, full-blown realism. Their accomplishments now need not necessitate travel to the great museums of the West, for Taiwan's National Palace Museum is now staging *The Body Beautiful in Ancient Greece* (大英博物館珍藏展－古希臘人體之美特展), showing the greatest works of the British Museum.

The exhibition explores Greece from the 8th century BC to the 2nd century AD, and is divided into ten themes, each exploring the culture's philosophical thought and appreciation of the aesthetics of the body: The Male Body Beautiful / Aphrodite and the Female / The Divine Body / Herakles: Superman / Athletes / Birth, Marriage and Death / Love and Desire / Outsiders / Character and Realism / The Human Face.

The more than 130 pieces being displayed are from the Greek and Roman collection of the prestigious British Museum. The heavyweight show has been organized as a way of celebrating the centenary of the Republic of China. The best-known and most iconic work on display is one of the British Museum's prize gems, "the Discus Thrower," an exquisite work that beautifully captures the power and fluidity of the human form at the moment of release, exhibiting graceful balance and rhythm. This is a Roman copy in marble of the lost Greek bronze original by sculptor Myron. Used in 1948 in posters for the London Olympics, it has become an iconic symbol for the world of athletic achievements.

The Bronze statuette of Zeus is a magnificent piece splendidly representing the majesty of Zeus, ruler of the gods on Mount Olympus and lord of the sky. He holds a sceptre and a thunderbolt, showing his control over gods and mortals, and his destructive power. The Marble statuette of Eros depicts the son of Aphrodite, goddess of love, who personified desire. The Greeks imagined him as a winged adolescent boy, shooting arrows to inflame his targets with primal passion and



desire. In Roman mythology, the goddess Venus, the symbol of beauty and love, is based on the Greek goddess Aphrodite; in Marble figurine of a woman, a representation of Aphrodite is shown in the act of discarding her clothing in graceful preparation for a bath. The delicate, rounded beauty of the female is skillfully rendered, emitting a gentle and softly sweet demeanor.

The imaginative world of ancient Greek myth was filled with a fantastic community of gods and part men, part beast like beings. And in the sculpted exploration of their sinewy lines and forms, we see the Greeks' passionate, ceaseless search for the definition of ideal beauty, their ponderings on the human character and civilization, as well as the boundaries of gender. 11

1. "The Discus Thrower," by Greek sculptor Myron, is one of the British Museum's most prized and most iconic treasures.
2. The Taipei exhibition has over 130 priceless works on display, bringing in admirers in great numbers to the NPM.
3. The fluid lines of this half-man, half-beast marble reveal the ancient Greek fascination with capturing the aesthetics of the living form.
- 4-5. The delightful "Marble statuette of Eros (Cupid)" depicts a winged adolescent boy in the act of mounting arrow in bow.

Information

The Body Beautiful in Ancient Greece

大英博物館珍藏展—古希臘人體之美

Time: Until 2/7

Hours: Daily 09:00- 17:00

Venue: National Palace Museum
(Library Building, Exhibition Area II, 1F)

Tel: (02) 2881-2021

Website: www.mediasphere.com.tw/bb

Transportation: MRT Danshui Line to Shilin Station, then transfer to bus No. 255, 304, Red 30, Small 18, Small 19.

“Plunderer of Blossoms” – Walasse Ting Retrospective Exhibition

The Taipei International Flora Expo's Fine Arts Park Area is suffused with the scent of the arts in the air, and as a bonus to yourself after breathing in the many-splendored beauties of the flower landscaping here, head into the Taipei Fine Arts Museum for an attractive retrospective exhibition of works by Walasse Ting (丁雄泉), fondly called the “Plunderer of Blossoms” for his wielding of his brush like a sword and his ability to seemingly pluck flowers from their natural setting and place them on his canvases. Acclaimed for his renderings of female nudes and flowers, Ting passed away in New York after illness in May last year, and the museum is celebrating the artist and the Flora Expo with *From Heroic Expression to Resplendent Color: Walasse Ting Retrospective Exhibition* (丁雄泉回顧展—從狂狷豪邁到絢麗色彩), which will run until February 13.



About 50 works have been brought together, ranging from the 1950s to the early 2000s. They include oils, acrylics, and inks on canvas and rice paper, with four works over ten meters long that have never been revealed to the public. Ting's life was spent in China, France and elsewhere in Europe, and finally in New York, with the artist gathering a great collection of life experiences and artistic influences along the way, interacting with many of the great names in art. The works selected from his oeuvre for this show clearly

depict this progression, from his early period of Abstract Expressionism of the 1950s to his gaily colored, romantic works since 1970.

In his youth, Ting was a largely self-taught street artist. At a little over 20, he boldly and impetuously headed off to Paris, the sacred altar of the art world, acquainting himself with the bold, thick colors and lines of the CoBrA Movement. He then moved to New York, where he became involved with the Abstract Expressionists, and his works showed obvious changes in technique, grasping international attention. His expansive palette of bright colors, with his bold brushstrokes, resulted in flowers of great delicacy and nudes full in form and charmingly seductive. Ting's style was all his own, a new and appealing East/West fusion, a style also reflected in his lyrical poetry. His inspiration was the beauties of the everyday world he saw around him, and beyond lovely women and flowers, he also took great joy seeking to capture the character of animals and insects. Bold and ambitious in composition, delicate and sensitive in brush stroke, his observations of life forms seem to the viewer to live on still.

◀ Walasse Ting's work *Venus*, was clearly deeply moved by Impressionist inspiration, his style one of exuberant colors bursting from the canvas.

Information

From Heroic Expression to Resplendent Color: Walasse Ting Retrospective Exhibition

丁雄泉回顧展—從狂狷豪邁到絢麗色彩

Time: Until 2/13

Hours: Daily 09:00–22:00 (free entry)

Venue: Taipei Fine Arts Museum (181, Sec. 3, Zhongshan N. Rd.; 中山北路3段181號)

Tel: (02) 2595-7656

Website: www.tfam.museum

Knock, Knock! Opening the Door to Nature's Beauties in Art



Another event that the Taipei Fine Arts Museum is staging in celebration of the Flora Expo is *From Nature to Art* (2010探索藝術展－KoKo自然), describing “how nature becomes landscapes; how landscapes interpret nature.” By seeing the 12 works of landscape art by Taiwan artists, children are encouraged to re-examine everyday life from an artistic point of view.

From Nature to Art uses KoKo in its Chinese title. This is the transliteration of the Chinese characters



used for “knock, knock,” here symbolizing the anticipation and expectation of visitors as they are led into a microscopic world by the artists; “KoKo” is a dynamic term, and as they enter the exhibition, they do not simply admire the works, but are also proactively exploring nature. As we hear the sound “KoKo,” the curtain is raised on a multi-sensory experience of art. In the “Nature, Landscape, Painting” section a dialogue between artist and landscape takes place, recollections and introspection achieved through framing as though in a photo. In “Mountain Views with Hands” a “Green Landscape Box” sits before you, filled with coarse stone brick, dry straw, hard man-made stone, and other materials,

an artwork that invites tactile exploration. With “A Scene, A Story” pillars that look like tree trunks have been inlaid with horns that serve as “tree eyes,” with audio used as the artist's background in a kinetic creation. “Landscapes in Perspectives” is an interactive installation that uses variable depths of field to realize the artist's compositional visions. “Books of Nature” is a mini-world inhabited by great numbers of illustrated books and books dedicated to nature as subject, amongst which adults and youngsters can meander unhurriedly in a journey of serendipitous discovery. In addition, two new books have been created for the show, a children's picture book titled *KoKo Nature* (叩叩自然), a “book without words” capturing the themes and the images of the exhibition in a collection you can hold in your hands.

Each interactive element stimulates the senses to the highest degree, changing your perception of the “real” world once you step outside into the everyday world. Be prepared to live in a world created anew, one to which brings you a new artistic vision, new eyes, and a new sense of mosaic of colors that life presents.

1. A large-scale sculpture presides over the exhibit entrance, a space for spectators to shuttle through or to sit down and relax.
2. The interactive exhibit design allows deep probes into the art and opens new vistas of sensory experience.

Information

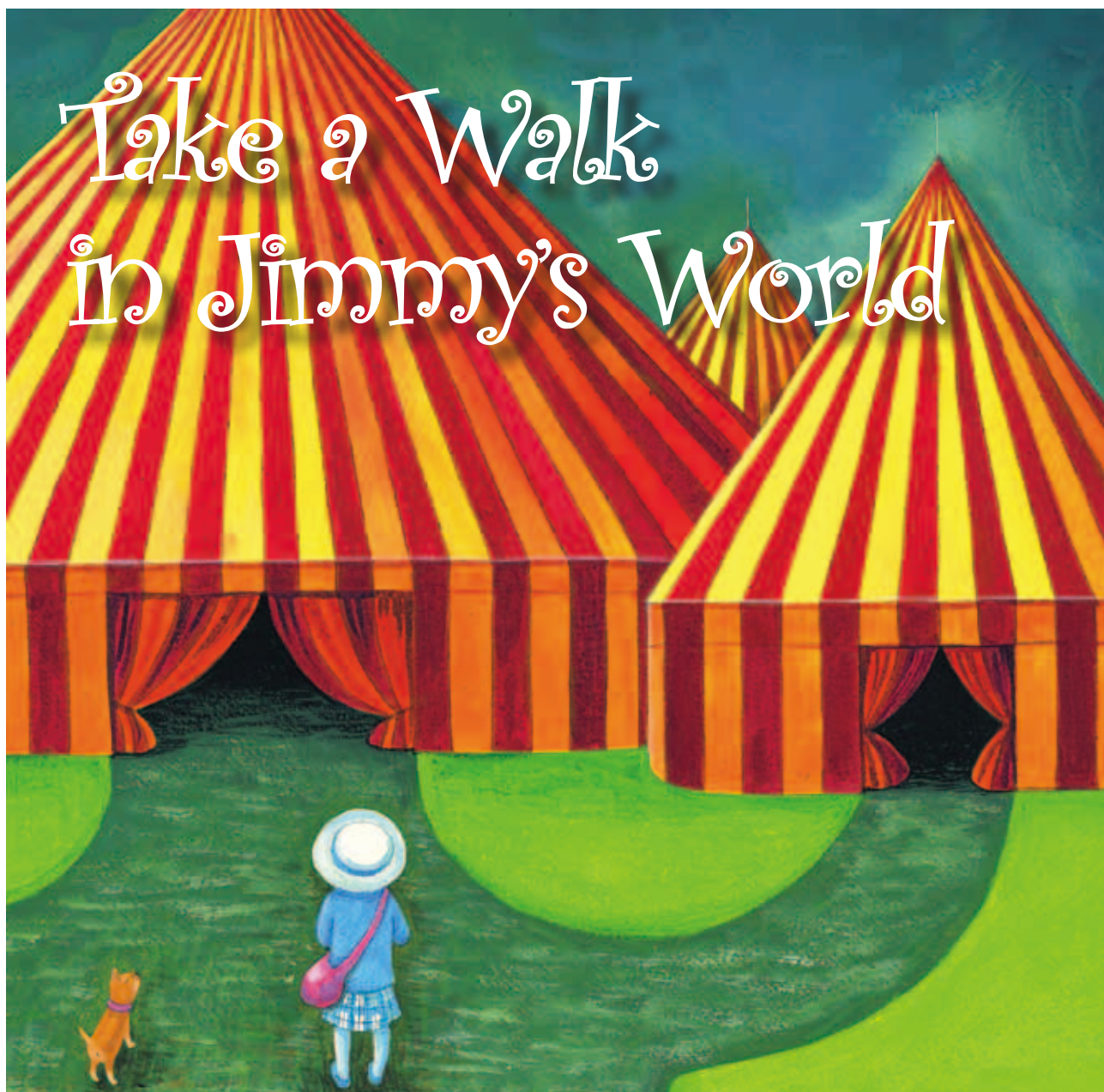
From Nature to Art
2010探索藝術展－KoKo自然

Time: Until 5/29

Hours: Daily 09:00–22:00 (free entry)

Venue: Taipei Fine Arts Museum, Children's Art Gallery

Website: www.tfam.museum



The world of illustrator Jimmy's (幾米) brush is one of easy flowing strokes and lines, pure and innocent cute characters, and gentle stories that nevertheless deliver penetrating insight. The artist, who now enjoys an international reputation, sits in a corner and watches the world of the big city roll by, looking on with subtlety and sensitivity. His books have been translated into many languages and have been adapted for music, film and television, animation, and cultural performances, and at the end of last year in mid-December last year, two new and very special Jimmy-inspired events hit the stage at Taipei's Huashan 1914 Creative Park (華山1914創意文化園

區), the first an exhibit on the corners of Jimmy's world entitled How to Own a Corner (幾米世界的角落特展), along with One More Day With You (走向春天的下午), a musical-fantasy theatrical creation.

The How to Own a Corner exhibit is based on Jimmy's famous illustrated book of the same name. Over twenty teams of creators and designers from Taiwan and Sweden have been invited to create 12 "corners of the world," passing through 12 gateways representing time portals in such different categories as architecture, landscape, lighting ornamentation, glass handicrafts, and clothing fabrics. Together they've created a labyrinthine "Jimmy's world" of

mysteries and hidden delights, a world of corners filled with humor and smiles. You'll be happily transported to a world you'd forgotten—your own youth, your own world of magical tales and make-believe. This dreamland has been set up as a full-sense experience, a fully engaged mini-world of sight, sound, touch, smell, and taste that as well touches and uplifts mind and soul along the way.

One More Day With You is a musical-theater adaptation of the book of the same name and of *How to Own a Corner*. The director, Hung Hung (鴻鴻), has brought together the lonely little girl who has lost her best friend from the former book, and the emotional and sensitive little boy from the latter. Visiting each other's dreamlands, they hereby participate in each other's stories, traveling together on a journey that brings them deep understanding of the meaning of self and of friendship.

Perhaps the most impressive thing about this stage work, beyond the wonderful ingenuity displayed in bringing the book illustrations to vivid life, is the brilliant synthesis of circus acrobatics, large-scale magic conjuring, dance routines, and musical-play elements that has been enabled as a result of first-time cooperation with the respected NX Theatre (魔浪超劇場) troupe. This brings a wholly novel interpretation of Jimmy's unbridled flights of fancy. Composer Liu Chi-ling (劉季陵), a Golden Melody film-score winner who has long studied the marriage of technology and art intensively, here deftly employs theatrical-stage audio-visual equipments to express the marvel, magic, and mystery of Jimmy's hyper-reality. The sense of art-world fantasy heightened further with special effects used to make characters in the play float through mid-air, and to appear and disappear as if by magic. *One More Day With You* is being performed 105 times at Huashan 1914 Creative Park, a record run for Taiwan, and whether we speak of the style of presentation of this work or the run, this work creates a new milestone for this country—one-of-a-kind entertainment, you'll be happy you've added to your treasure-box of novel life experiences. 12



1. *One More Day With You* is a wonderful synthesis of circus acrobatics, large-scale magic conjuring, dance routines, and musical-play elements, a wholly novel interpretation of Jimmy's world of make-believe.
2. The exhibit on the corners of Jimmy's world, and the illustrated book that is its inspiration, are both entitled *How to Own a Corner*.

Information

How to Own a Corner 幾米世界的角落特展

Time: Until 3/27

Venue: Huashan 1914 Creative Park (1, Sec. 1, Bade Rd.; 八德路1段1號)

Tel: (02) 8751-1176

Hours: 10:00~22:00

Website: www.jimmyspa.com

Tickets: tickets.books.com.tw/index/; 7-ELEVEN ibon system around the island (regular ticket NT\$250, package of two NT\$450, package of four NT\$880)

One More Day With You 走向春天的下午

Time: Until 2/28

Venue: Huashan 1914 Creative Park

Tel: (02) 8751-1176

Website: www.jimmyspa.com

Tickets: NTCH www.artsticket.com.tw (NT\$600, package of four tickets NT\$1980)

2011 **01/02**

January-February Arts Exhibition Calendar



National Palace Museum

Tel: (02) 2881-2021

Add: 221, Sec. 2, Zhishan Rd. (至善路2段221號)

Website: www.npm.gov.tw

Until 2011/05/31

Fragrance Fills the Courtyard: Chinese Flower Paintings Through the Ages

Until 2011/08/01

An Assorted Tapestry of Lustrous Beauty: Export Porcelains from the Museum Collection

Taipei Fine Arts Museum

Tel: (02) 2595-7656

Add: 181, Sec. 3, Zhongshan N. Rd. (中山北路3段181號)

Website: www.tfam.museum

Until 2011/02/20

Elsewhere: Paul Gauguin

Until 2011/02/27

2010 Taipei Arts Awards

Museum of Contemporary Art Taipei (MOCA Taipei)

Tel : (02) 2552-3721

Add : 39 Chang'an W. Rd. (長安西路39號)

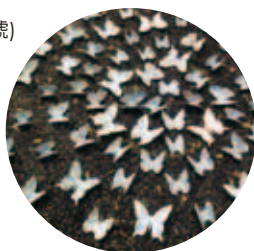
Website : www.mocatapei.org.tw

Until 2011/01/30

Smiling Butterflies

Until 2011/02/12

Chinese Characters—Interactive Installation Exhibition



National Theater & Concert Hall

Tel: (02) 3393-9888

Add: 21-1 Zhongshan S. Rd. (中山南路21-1號)

Website: www.ntch.edu.tw

2011/01/21

Evergreen Symphony Orchestra New Year Concert

2011/01/22

Forum Music Percussion Ensemble Weekend Concert Series – Sounds of the Saxophone

2011/01/23

Yoshiko Kawamoto Viola Recital

2011/01/27

Kit Armstrong Piano Recital

2011/02/27

The Pearl on Strings – Midori

Huashan 1914 Creative Park

Tel: (02) 2358-1914

Add: 1, Sec. 1, Bade Rd. (八德路1段1號)

Website: web.huashan1914.com

Until 2011/10/13

Wonderful e-NPM Q&A

National Taiwan Museum

Tel: (02) 2382-2566

Add: 2 Xiangyang Rd., inside 228 Memorial Peace Park (襄陽路2號)

Website: www.ntm.gov.tw

Until 2011/02/13

The Sword Dance of Chu – An Exhibition of Chu Cultural Relics Unearthed in Hubei Province Including the Sword of Goujian, King of Yue

Until 2011/03/13

100 Years of Sounds – Listening to R.O.C. History



Taipei Artist Village

Tel: (02) 3393-7377

Add: 7 Beiping E. Rd. (北平東路7號)

Website: www.artistvillage.org

Until 2011/03/31

Lines of Light, Wild Flowers, Historical Area, and Gongguan Riverside Square LED Light Show Program

National Museum of History

Tel: (02) 2361-0270

Add: 49 Nanhai Rd. (南海路49號)

Website: www.nmh.gov.tw

Until 2011/02/06

11th National Calligraphy Spring & Autumn Competition Exhibition of Winning Entries

2011/01/29- 2011/05/01

The Glory of the Qing – Exhibition of Treasures from the Shenyang Imperial Palace Museum

Guandu Nature Park

Tel: (02) 2858-7417

Add: 55 Guandu Rd. (關渡路55號)

Website: www.gd-park.org.tw

Until 2011/02/28

Destination Anywhere—Seabirds Exhibition



How You Get from Taiwan Taoyuan International Airport to Taipei

Taxi

Service locations: to the north of the Arrivals hall of Terminal I and to the south of the Arrivals hall of Terminal II

One-way journey fare: meter count plus 50%, with freeway tolls extra; average fare to Taipei around NT\$1,100.

Terminal I Arrivals hall taxi-service counter tel. no.: (03) 398-2832

Terminal II Arrivals hall taxi-service counter tel. no.: (03) 398-3599

Mocca Power Co.

Service locations: to the southwest of the Arrivals hall of Terminal I (exterior vehicle pickup corridor) and to the northeast of the Arrivals hall of Terminal II (exterior vehicle pickup corridor)

Reservations tel: 0926-170-090

One-way fare: NT\$800, travel time 30-40 mins

Passenger Coach Bus

Service locations: to the southwest of the Arrivals hall of Terminal I (exterior vehicle pickup corridor) and to the northeast of the Arrivals hall of Terminal II (exterior vehicle pickup corridor)

Coach-service companies: Taiwan Bus Corp., Evergreen Bus, Fe Go Express, Toward You Air Bus

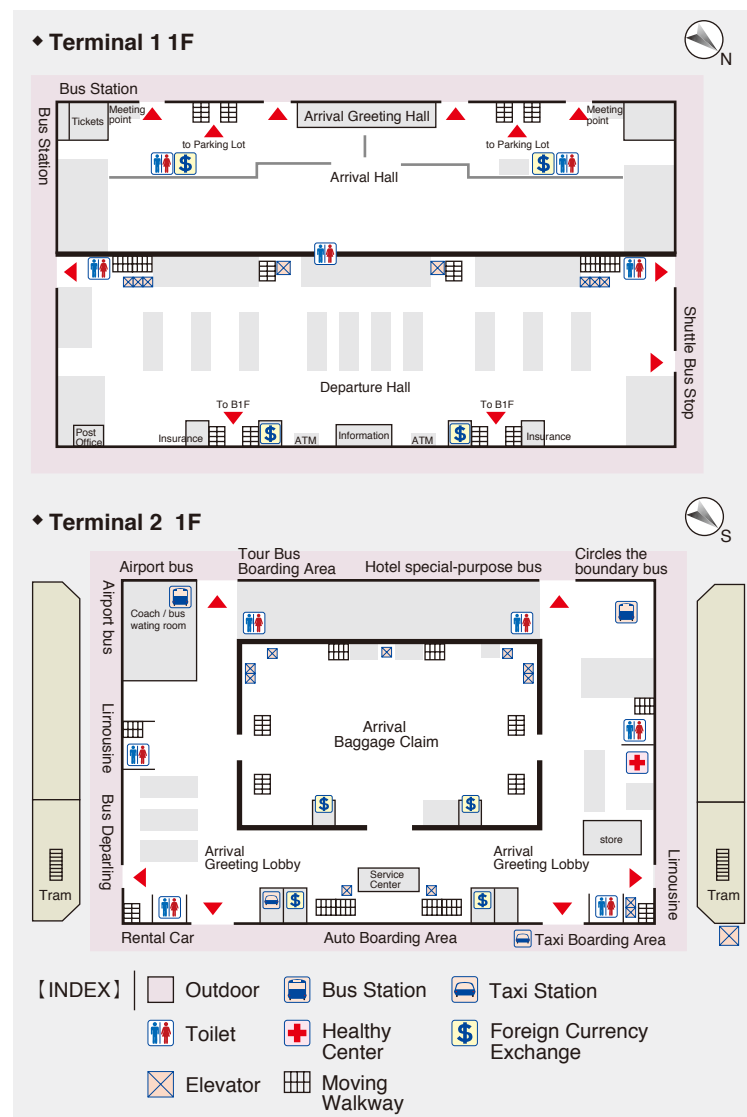
One-way fare: NT\$85~145

Journey time: 40~60 minutes depending on routes (60~90 minutes for Toward You Air Bus, which has more stops)

Frequency of service: Every 15~20 minutes (Toward You Air Bus 20~30 minutes)

For traveling between Taipei and Taiwan Taoyuan International Airport, whether by inexpensive, high-quality coach, safe and fast taxi, or high-grade professional airport limo service, you're spoiled for choice in satisfying your particular time and budget. 🚗

"The Transportation Map of Taoyuan International Airport Terminal I & II"



NOTICE

In order to improve the quality of telephone service to the public, the city government is systematically implementing the 1999 Citizen Hotline plan (1999市民熱線優化專案). Since 3 July in 2008, 16 toll-free 0800 lines from 15 Taipei City Government departments, along with two non-0800 lines from the Department of Environmental Protection (環保局), have been consolidated within the 1999 public-access hotline service. For more information, please call 1999 or visit the website of the Research, Development and Evaluation Commission (研考會) at www.rdec.taipei.gov.tw

TAIWAN EMERGENCY TELEPHONE NUMBERS

Police / 110
Crimes, traffic accidents, and other incidents for which police assistance is needed
Fire / 119
Fire, injury or accident, or other urgent matters for which emergency relief is needed
Women and Children Protection Hotline / 113 ext.0
24-hour emergency, legal information, and psychological services for victims of domestic violence and/or sexual abuse.

NON-EMERGENCY TELEPHONE NUMBERS

Unit	Tel. No.
Taipei City Govt. Citizen Hotline	1999
English Directory Service	106
IDD Telephone Service Hotline	0800-080-100 ext.9
Time-of-Day Service	117
Weather Bureau	166
Traffic Reports	168
Tourism Bureau (MOTC) 24-Hour Toll-Free Travel Information Hotline	0800-011-765
Tourism Bureau (MOTC) Toll-Free Traveler Complaints Hotline	0800-211-734
International Community Service Hotline	0800-024-111
Tourism Bureau Information Counter, Taiwan Taoyuan International Airport	Terminal 1:(03)398-2194 Terminal 2:(03)398-3341
Government Information Office, Executive Yuan	(02) 3356-8888
Bureau of Foreign Trade	(02) 2351-0271
Taiwan External Trade Development Council (TAITRA)	(02) 2725-5200
Taiwan Visitors Association	(02) 2594-3261
Ministry of Foreign Affairs	(02) 2348-2999
Ministry of Foreign Affairs Citizens Hotline	(02) 2380-5678
Police Radio Station	(02) 2388-8099
English Hotline for Taxi Service	0800-055-850 ext.2
Consumer Service Center Hotline	1950
Bureau of National Health Insurance Information Hotline	0800-030-598 ext.3
AIDS Information Hotline	0800-888-995

Source for Above Information:

Information For Foreigners Service / Tel: 0800-024-111
Tourism Bureau, Ministry of Transportation and Communications
Tel: (02)2349-1500

※ Entries in brown indicate service in English provided

LIST OF TAIPEI VISITOR INFORMATION CENTERS

Taipei Main Station Visitor Information Center
(02) 2312-3256
3, Beiping W. Rd., Zhongzheng District

East Street Mall Information Center
(02) 6638-0059
Underground Mall 4-2, 77, Sec.1, Da'an Rd., Da'an District

MRT Beitou Station Visitor Information Center
(02) 2894-6923
1, Guangming Rd., Beitou District

MRT Jiantan Station Visitor Information Center
(02) 2883-0313
65, Sec. 5, Zhongshan N. Rd., Shilin District

MRT Yuanshan Station Visitor Information Center
(02) 2591-6130
9-1, Jiquan St., Shilin District

MRT Ximen Station Visitor Information Center
(02) 2375-3096
B1, 32-1, Baoqing Rd., Zhongzheng District

Miramar Entertainment Park Visitor Center
(02) 8501-2762
20, Jingye 3rd Rd., Zhongshan District

Yangming Park Visitor Center
(02) 2861-8975
26, Sec. 2, Hushan Rd., Beitou District

Gongguan Visitor Center
(02) 2364-8618
1, Siyuan St., Zhongzheng District

Plum Garden Visitor Center
(02) 2897-2647
6, Zhongshan Rd., Beitou District

Maokong Gondola Taipei Zoo Station Visitor Center
(02) 8661-7627
2, Lane 10, Sec. 2, Xinguang Rd. (1F, Maokong Gondola Service Center)

Maokong Gondola Maokong Station Visitor Center
(02) 2937-8563
35, Lane 38, Sec. 3, Zhinan Rd. (Exit area, Maokong Station)

The Taipei Int'l Flora Expo, Service Points



Area/Transport	Taipei MRT	Public Buses
Yuan Shan Park Area	Take the No. 2 free Flora Expo shuttle bus from MRT Yuan Shan Station, MRT Jiantan Station, or MRT Minquan W. Rd. Station, all on the MRT Danhai Line.	Get off at the Employment Service Office (就業服務處), Minglun High School (明倫高中), Kulun St. Intersection (庫倫街口), and MRT Yuan Shan Station bus stops.
Fine Arts Park Area	Take the MRT to MRT Yuan Shan Station and walk 5-10 minutes, or take the No. 1 free Flora Expo shuttle bus from MRT Songshan Airport Station or MRT Zhongshan Junior High School Station.	Get off at Taipei Fine Arts Museum (臺北市立美術館) and Tatung University (大同大學) bus stops.
Xinsheng Park Area	Take the No. 1 free Flora Expo shuttle bus from MRT Songshan Airport Station or MRT Zhongshan Junior High School Station, both on the MRT Wenhu Line.	Get off at the Xinsheng Park (新生公園) and Jilin Rd. End (吉林路底) bus stops.
Dajia Riverside Park Area	Take the No. 5 free Flora Expo shuttle bus from MRT Jiantan Rd. Station on the MRT Wenhu Line.	Get off at Dajia Elementary School (大佳國小) and Dajia Riverside Park (大佳公園) bus stops.

Special Feature (P16~P19)

A Day Trip Exploring Flowers, Arts, and Traditions

