

UNDISCOVERED TAIPEI

WHERE NATURE AWAITS



觀光傳播局
Department of Information and Tourism

undiscovered
taipei
taichung

Oct. 2022 Published

Legend

BR Wenhui Line

R Tamsui-Xinyi Line

G Songshan-Xindian Line

O Zhonghe-Xinlu Line

BL Bannan Line

A Taoyuan Airport MRT

 Maokong Gondola

 Birds

 Frogs

 Flowers

 Ferns

 Butterflies

 Fireflies

Key

 Maokong Gondola Maokong Station

P.5 Mei-Jia Tea Garden, Xinghualin Recreational Farm

P.13 Maokong Hiking Trail      

BR 06 MRT Linguang Station

P.10 Fuyang Eco Park    

BR 19 MRT Neihu Station

P.5 Martin Farm, Donglin Strawberry Farm, Bodhi Yuan Farm

P.6 White Rock Leisure Farm

BR 22 MRT Donghu Station

P.3 Lohas Park 


R 02 MRT Xiangshan Station
(near Xinyi Shopping District)

P.11 Sihshoushan Circular Hiking Trail      

R 06 MRT Daan Park Station

P.3, 10 Daan Park   


R 15 MRT Jiantan Station **R 16** Shilin Station
(near Shilin Shopping District)

P.3 Floriculture Experiment Center, Yangming Park 

P.4, 18 Zhuzihu  

P.4 C.K.S. Shilin Residence Park 

P.6 MeiG Farm and Restaurant,
Futian Village Eco-educational Farm

P.9 Shezidao Daotou Park 

P.17 Yangmingshan National Park

P.20 Jiantanshan Hiking Trails  

R 22 MRT Beitou Station

P.4, 18 Zhuzihu  

R 25 MRT Guandu Station

P.7 Guandu Nature Park 


G 11 MRT Xiaonanmen Station

P.10 Taipei Botanical Garden    

O 10 MRT Zhongshan Elementary School Station

P.4 Taipei Expo Park, Xinsheng Area 

BL 10 MRT Longshan Temple Station

P.8 Huajiang Wild Duck Nature Park 

Location





01 Flowering Season Highlights

Taipei is in bloom all the year round, with flower festivals to visit whatever the season.

1 Taipei Camellias Show

Floriculture Experiment Center

JAN



2 Lohas Cherry Blossom Festival

Lohas Park

FEB



3 Yangmingshan Flower Festival

Yangming Park

FEB - MAR



4 Taipei Azalea Festival

Daan Park

MAR





5 Taipei Rose Festival
Taipei Expo Park, Xincheng Area **MAR**



6 Calla Lily Festival
Zhuzihu **MAR - APR**



7 Hydrangea Festival
Zhuzihu **MAY - JUN**



8 Chrysanthemum Festival
C.K.S. Shilin Residence Park **NOV - DEC**



02 Farm Fun

Local farms are a wonderful place for city dwellers to reconnect with the land by trying their hand at fruit picking, handicrafts — even being a farmer for a day!

1 Tea Culture Immersion

Mei-Jia Tea Garden # Xinghualin Recreational Farm

Maokong is known for its tea plantations and mountain views. Come try its signature teas, including *Muzha Tieguanyin*, *Jinxuan* and *Cuiyu*, and walk around the plantations to learn more about how tea is grown. You've even got a chance to make your own tea-flavored pastries such as tea eggs, cookies and mochi.



2 Organic Fruit Picking

Martin Farm # Donglin Strawberry Farm # Bodhi Yuan Farm

From November to April, strawberry picking is a popular activity in Taipei's Neihu District. In summer, pick-your-own cherry tomatoes and wax apples are in season, with DIY jam making especially popular with families. Organic farms around Baishihu are great places to go fruit picking.





3 Farm-To-Table Kitchen

MeiG Farm and Restaurant # White Rock Leisure Farm

There are a number of farm-to-table kitchens tucked away in the mountains of Taipei where the owners cook seasonal dishes with their homegrown produce, such as pickled cabbage made from fruit and vegetables, and egg dishes with oranges or ginger lilies. Visitors may also pick their own ingredients and get the chance to cook a farm-to-table meal themselves.



4 Plant Dyeing

Futian Village Eco-educational Farm

Mayflower gloryberry (*Clerodendrum cyrtophyllum*), which grows in clusters by the streams of Yangmingshan, was an important source of natural dyes in times past. Today, some of the farms on Yangmingshan still offer DIY plant dyeing courses for visitors to learn about and experience the beauty of natural colors.



03 Eco Parks

Take a short stroll or hop on a bike to one of these recommended parks for a quick trip to nature.



1 Guandu Nature Park

55, Guandu Rd., Taipei City

Guandu Nature Park is an important wetland area in northern Taiwan. It's also an excellent site for birdwatching, where you can catch sight of over 300 species of birds. Between September and April, various species of migratory birds spend the winter here each year. One of the most commonly seen birds is the black-winged stilt, while other species include the green-winged teal, common greenshank, gray heron, and great egret. The black-faced spoonbill is another winter visitor that can be found within the park.

Visitors can go to the second floor of the Visitor Center to look at birds in the Core Reserve Area through a high-power telescope. There are also a number of themed areas to observe

the wildlife and plants, as well as free tours conducted by experts.

To get a view of the entire riverside and wetlands, the Guandu Riverside Bikeway is your best choice. Here you may witness the rare sight of waterfowls leaping to forage for food and appreciate the mangroves that protect wetlands and provide rich ecological sustenance.

Bike Rental:

YouBike: MRT Guandu Station, Guandu Nature Park, Guandu Hospital, Guandu Temple

Taipei Riverside Bike Rentals: Guandu Station (Beside Guandu Wharf)

More Info





2 **Huajiang Wild Duck Nature Park**

Between Guilin Rd. and Huajiang Bridge

This park is one of the most popular birdwatching spots in Taipei. Every year from September through April, throngs of birds coming from Siberia and Northeast Asia winter here. Thousands of birds of more than 90 species can be seen within the park during winter, most of them species of anatidae and charadriidae.

The Tamsui River's sediment has created a large area of wetland and sandbar shoals rich in fish, shrimp, shellfish and humus as well as aquatic plants like common reed, matgrass and narrowleaf cattails that make it suitable for migratory birds. Frequent waterfowl visitors include green-winged teals, eastern spot-billed ducks, gray herons, little ringed plovers and common sandpipers. You can also see land-based birds like common mynas, Eurasian magpies and light-vented bulbuls.

To observe the birds in their natural environment, the park has built a 600-meter trail with interpretive signage along the length. On Sundays during the migratory bird season from October to April, volunteers from the Wild Bird Society of Taipei are on hand to offer guided tours and commentary.

As well as birdwatching, the riverside bikeway offers a way to take in a panoramic view of the wetland scenery at your leisure.

Bike Rental:

YouBike: Huajiang No. 8 Park, MRT Longshan Temple Station (Exit 1), Huaxi Park, Longshan Elementary School

Taipei Riverside Bike Rentals: Dadaocheng Station (Beside Dadaocheng Wharf)

More Info



3 Shezidao Daotou Park

Sec. 9, Yanping N. Rd., Taipei City

Shezidao Daotou Park is located where the Keelung and Tamsui Rivers come together. From here, You'll see Guandu Bridge and the Guandu riverbanks with their rich mangrove and wetland habitat, where fiddler crabs can be found at low tide.

More than 40 species of birds can be spotted around natural wetlands of Shezidao all year round. In addition, you may also spot great and little egrets, black-shouldered kites and ospreys. In August and September, migratory birds like the common greenshank, cattle egret, grey heron, common sandpiper and snipe, and black-faced bunting visit the wetlands. At this time of the year, you might even be fortunate enough to witness the endangered black-faced spoonbills and Eurasian spoonbills. If

you'd like to learn more about these animals, the Shezidao Wetlands Education Center are open every Saturday and Sunday, with lectures and family-friendly activities on environmental education. It's a great place to learn about ecology.

Elsewhere, the nine-kilometer-long Shezidao Bikeway offers a gentle ride with gorgeous views of the Datun Mountains and Mt. Guanyin. Cyclists can also see the crystalline waters of the Keelung River. Cycling is a great way to experience the beauty of nature around and within Shezidao.

Bike Rental:

YouBike: Shezidao Daotou Park, Shezidao Wetland Service Center, Kuntian Temple, Entrance of Ln. 133, Sec. 8, Yanping N. Rd., Fuan Junior High School

More Info



Photo: Hydraulic Engineering Office, Taipei City Government

4 Daan Park

1, Sec. 2, Xincheng S. Rd., Taipei City

An ecological park with a forest-like environment in central Taipei, Daan Park has been dubbed the "lungs of Taipei." Successful ecological restoration efforts have seen *Aquatica ficta*, a common Taiwanese firefly, return and light up the park's ecological ponds in April and May. The Taiwan barbet and crested goshawk can also be spotted in the park in spring and fall.

Over 12 varieties of azaleas, Taipei's official flower, bloom together in the spring, while magnolias, cape jasmines, orange jasmines and orchid trees surround the amphitheater with fragrance. Passersby on the adjacent Jianguo S. Rd. can see rows of palm trees and imagine themselves in a tropical forest.

[More Info](#)



5 Fuyang Eco Park

At the end of Fuyang St., Taipei City

The park retains its low-altitude forest ecosystem. Up to 331 varieties of plants grow here, and the park is also home to diverse species of insects, butterflies, frogs and other animals and birds: the Swinhoe's japalura, the black-naped monarch, the Taiwan barbet, skipper butterflies, Taiwanese fireflies and Taipei green treefrogs can all be found in this exceptional place.

[More Info](#)



6 Taipei Botanical Garden

53, Nanhai Rd., Taipei City

Taipei Botanical Garden serves as an important institution for the classification and preservation of plants. More than 1,200 plant varieties are on display within the grounds, including fern and ginger, with lotuses in full bloom during summertime. Bird species including the Taiwan blue magpie, the Taiwan scimitar-babbler, the turtle dove, the black-crowned night-heron, the common kingfisher and the collared scops-owl can all be seen here, making this place a popular spot for birdwatching.

[More Info](#)



04 Let's Stroll Together

With mountains on three sides, Taipei boasts a multitude of mountain trails to suit all ages and levels, so all the family can take a hike and discover the city's natural beauty.



1 Sihshoushan Circular Hiking Trail 🐘🦁🐆🐅

Sihshoushan (The Four Beasts Mountains) are named for the animals they are said to resemble: Xiangshan (Elephant Mountain); Shishan (Lion Mountain); Baoshan (Leopard Mountain) and Hushan (Tiger Mountain). The Xiangshan and Hushan trailheads are conveniently close to the Xinyi Shopping District and offer a fantastic view of the Taipei basin, Taipei 101 and the nearby mountains.

Xiangshan Hiking Trail

🕒 approx. 1hr one-way

📍 Aly. 22, Ln. 150, Sec. 5, Xinyi Rd., Taipei City (near Lingyun Temple)

Xiangshan Hiking Trail starts with a climb at Lingyun Temple near MRT Xiangshan Station and soon divides into two branches. The left fork is rather flatter and leads to the scenery of Yixiantian (Single Line Sky) where you can see massive rocks, cliffs and narrow boulder crevices. The right fork leads up to a steep stone stairway. The two fork trails both lead to Liujushi (Six Boulders, a set of six giant rocks) that is the best spot to admire the city view during the day and night.

Xiangshan is home to many ferns including

woolly ferns, walking ferns, spikemoss and beech ferns. You may also see endemic frog species like the Taipei green treefrog, Moltrecht's green treefrog and robust Buerger's frog, butterfly species like birdwings, brush-footed butterflies and gossamer-winged butterflies, as well as beautiful birds like the Taiwan blue magpie and Taiwan barbet.

Taipei Live Cam



More Info



Hushan Hiking Trail

🕒 approx. 50mins one-way

📍 Ln. 251, Fude St., Taipei City (near Songshan Cihui Temple)

More Info



Hushan Creek Hiking Trail is great for ecological exploration; ferns flourish in the high humidity arising from the mountain creek environment. Hushan boasts over 70 types of ferns, including the spiny tree fern and the maidenhair fern. Stream fishes like groupers and gobies can also be spotted swimming in Hushan Creek. In April and May, the Hushan Shanyao Trail becomes a paradise for the Taiwanese fireflies where you can see them lighting up the night.



Fern

Woolly Fern (*Cibotium barometz*)

Mostly growing in the gullies of rocky cliffs, this fern has golden hairs around the base of its stalk to absorb moisture. Its sorus is enclosed by two shell-shaped indusia, like a slightly open dam.



Walking Fern (*Bolbitis subcordata*)

As well as the common spore propagation, this fern also uses the buds on its pinna to propagate. When the leaves grow long enough for the buds to reach the ground, the buds will sprout a new plant, giving the plant its nickname, the "walking fern."



2 Maokong Hiking Trail 🐔🌿🍵🌀🐸🍄

Maokong, one of northern Taiwan's major tea-growing areas, is known internationally for its *Tieguanyin* and *Wenshan Baozhong* tea. You can take the Maokong Gondola to enjoy the beautiful scenery of the mountains and tea gardens.

Zhanghu Trail ⌚ approx. 40mins one-way

📍 Ln. 38, Sec. 3, Zhinan Rd., Taipei City

In the past, the semicircular Zhanghu Trail served as Maokong's main access road to other areas. Spring and summer are the prime times to see the acacia trees in bloom. The "Melody Gallery" is another feature of the trail as it is tailored to the site — the interactive instruments such as leaf-shaped rain dishes, wooden wind chimes and a piano have been set up here as installation artworks, attracting visitors to stop by.



Zhangshu Trail ⌚ approx. 40mins one-way

📍 Ln. 38, Sec. 3, Zhinan Rd., Taipei City

Connecting to Zhanghu Trail in a loop, this trail is relatively flat, with tea gardens, carts and barns along the path. Lupins come into full bloom from February to April, adding even more color to the trail. As night descends, Taipei green treefrogs and emerald green treefrogs send up their voices to turn the evening into an outdoor concert.



Fern

Bat's-Wing Fern (*Histiopteris incisa*)

This fern can be found on sun-facing slopes along Maokong's trails. It has butterfly-shaped leaves with a greenish white back, and it can adapt to dry and hot environments, earning it the nickname "spring fern." It is poisonous and cannot be eaten. Xiangshan and Lengshuikeng at Yangmingshan are also popular places for spotting this fern.





Zhinan Tea Fragrance Trails

GO The Circular Trail: Ln. 40, Sec. 3, Zhinan Rd., Taipei City (across from Taipei Tea Promotion Center)

GO The Zhinan Temple Trail: Ln. 33, Sec. 3, Zhinan Rd., Taipei City (near the Affiliated Experimental Elementary School of National Chengchi University)

This circular trail consists of the Health Trail, Tea Center Trail, Xiaotiankong Trail and Pothole Trail with wonderfully diverse scenery, including terraced tea plantations and a potholed riverbed. It also connects to Zhinan Temple Trail, the opposite end of the trailhead at Ln. 33, Sec. 3, Zhinan Rd., offering a different hiking experience.

Health Trail

🕒 approx. 40mins one-way

Along the trail you can see a sea of Chinese junipers as well as stout century-old camphors, squirrels made from earth, waterfalls and streams.

Tea Center Trail

🕒 approx. 30mins one-way

This path passes by Changhong Bridge with views of terraced fields and tea plantations as well as the river basin and its plants and animals, including the striking *Ypthima multistriata* Butler butterflies. As you head towards the stream, you will arrive at the pothole area.

Xiaotiankong Trail

🕒 approx. 15mins one-way

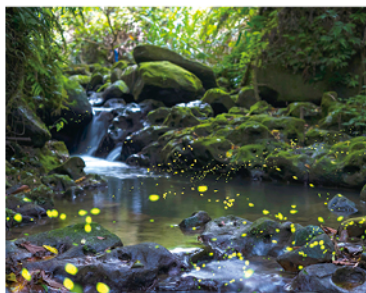
Around 250 meters in length, this trail also leads to an arc-shaped viewing platform which offers a near-270-degree sprawling view over the beautiful Maokong's valleys below.



Pothole Trail

🕒 approx. 20mins one-way

Accompanied by the gurgling of waterfalls and streams are river potholes, Maokong's most distinctive natural attraction. The potholes in the rock of the stream bed, created by the rushing water, look like cat-paw imprints, hence the name "Niaokang" — meaning "cat-paw imprints" in Taiwanese — was later the name of the place "Maokong" derived from. In April and May, fireflies can also be seen here.



Zhinan Temple Trail

🕒 approx. 30mins one-way

Built during the Showa period of Japanese colonial era, the trail begins at Zhinan Rd. which leads up to the climbing stairs with 1,200 stone steps. At the end of the trail is Zhinan Temple overlooking Taipei City from above.

The nearby Dacheng Hall Trail is connected by gravel paths and wooden plank walkways. Every April and May, visitors to Maokong can experience the "May Snow" — the tung flower blossoms — with snow-white flowers covering the ground.





Photo: Yangmingshan National Park Headquarters

3 Yangmingshan National Park 🐦🌿🍄🐌🐛🐞

Yangmingshan National Park mainly consists of the Datun volcanoes and has a unique landscape of fumaroles with an ecosystem full of flora and fauna including the Taiwan blue magpie and Taiwan bamboo-partridge, all of which can be seen along its mountain trails.

Qingtiangang Circular Trail

🕒 approx. 1hr loop

📍 246, Ln. 101, Jingshan Rd., Taipei City
(Qingtiangang Visitor Service Station)

Hiking the 2.4 km Qingtiangang Circular Trail, you can see the remains of the Jinbaoli Gate and many historic trails hidden in the woods. You'll also have a chance to see endemic flower species like the Taiwanese longdan and *Helonias umbellata*.

Qingtiangang is most famous for the vast grassland, where crested serpent eagles circle overhead while clouds and mist roll in about the mountains.



Zhuzihu Trails

🕒 approx. 30mins loop

GO Near 16, Zhuzihu Rd., Taipei City (by Zhuzihu Police Station)

Strolling along the Zhuzihu Trails which include the Dinghu Circular Trail and Haiyu Circular Trail, you can see mist rising from the faraway Xiaoyoukeng and egrets foraging in the fields. Visitors are also welcome to pick calla lilies and take photos among the blooming hydrangeas. The Shuicheliao Trail is of particular interest as the site was where Japonica rice first cultivated in the Zhuzihu area.

More Info





Pingding Ancient Canal Hiking Trail

🕒 approx. 1.5hrs one-way

GO Near 29, Ln. 370, Sec. 3, Zhishan Rd., Taipei City
(Take Bus S18 to Pingding Ancient Canal Hiking Trailhead)

The trail passes three century-old canals — Pingding Ancient Canal, New Pingding Canal and Dengfeng Canal, as well as tributaries of the Neishuangxi. The hilly landscape and clear streams nurture a rich ecology of ferns including woolly ferns, vessel ferns and *Osmunda banksiifolium*, and aquatic fauna like freshwater shrimps, crabs, and fishes.

A wide range of wildlife lives in the forest, such as Malayan night-herons, Taipei green treefrogs, robust Buerger's frogs, swallowtail butterflies, damselflies and Taiwanese fireflies.



Fern

Vessel Fern (*Angiopteris iygodiiifolia*)

Growing on shady and damp hillsides, this fern can grow leaves up to three meters long, with sori along the back of the leaf's edges. When a large leaf falls, the stipules protecting new sprouts cluster along the stems like a lotus flower, hence this fern has the Chinese common name "Guanyin lotus fern."

Photo: Chen-Meng Kuo, Associate Professor



4 Jiantanshan Hiking Trails

 Near Bus Jiantan Station, Sec. 4, Zhongshan N. Rd., Taipei City

 approx. 1.5hrs one-way

Mt. Jiantan is part of the Wuzhi Mountain Range and one of Taiwan's 100 distinctive suburban mountains. A former military restricted area, its floral ecology has been well conserved. The upper level of the forest is made up of red machilus, incense machilus and common elaeocarpus. On the side slopes are dozens of types of ferns, like *Hemigramma decurrens* and *Pteridaceae*. Shade-tolerant plants like wild coffee and Formosan sweet spire create a foraging habitat for many animals and birds including Taiwan blue magpies and Taiwan barbets.

Sentry boxes remain along the trail and you can overlook the scenery of the Taipei basin and Mt. Guanyin from lookout platforms. Most well known is Laodifang (The Old Place), where you can see planes taking off and landing at Taipei Songshan Airport and admire the scenery of Dajia Riverside Park, Keelung River and Taipei 101.

Fern

Hemigramma decurrens

Growing along forest trails at low altitudes, this fern develops scales from stems to petioles. If you look closely, you will discover the sori growing along leaf veins like a web, which cover the back of leaves when they mature and create a coarse texture, hence it has the Chinese common name "sand-skin" fern.



More Info



Taipei Grand Trail Challenge

The Taipei Grand Trail consists of seven sections of mountain trails totaling 92km in length, and a 38km riverside bikeway. Every access point of the trail is accessible via MRT or YouBike, making it easy to tackle as much of the trail as you can handle. The entire stretch of the 130km trail takes you through the spectacular landscape of Taipei and is on the must-do list for all experienced hikers.



- 1 MRT Guandu Station — Erziping Visitor Center
- 2 Miantianping Pavilion — Xiaoyoukeng Visitor Service Center
- 3 Xiaoyoukeng Visitor Service Center — Fengguikou
- 4 Fengguikou — China University of Science and Technology
- 5 MRT Jiantan Station — Bishanyan
- 6 China University of Science and Technology — MRT Linguang Station
- 7 Shijie Shanzhuang — Feilong Trail at National Chengchi University's Rear Mountain
- 8 MRT Taipei Zoo Station — MRT Guandu Station (riverside bikeway)

More Info



Collecting Wildlife in Taipei

Parks and trails in Taipei are home to various endemic species of animal and plant life. Slow down to look out for them, and color in the Ecology Coloring Book when you do!

- Birds
- Plants
- Insects
- Frogs

The bright yellow flower has six petals and is shaped like the ancient Chinese percussion instrument called the "duo."

The petals turn green as they converge to the receptacle. Each pedicel produces three flowers.

Taiwan Fairy Bells (Disporum shimadai)

- 📍 Yangmingshan National Park (Lengqing Trail, Lengshuikeng Ecological Pond)

The lime butterfly has beige and brown spots of various sizes across its black wings. The upper wings each have a round pattern that together look like a pair of eyes, while the reddish brown spots are the main feature of the bottom wings.

Lime Butterfly (Papilio demoleus)

- 📍 Pingding Ancient Canal Hiking Trail
- 📍 Taipei Botanical Garden

The Taiwan barbet is known for its colorful feathers — a green base, black eyebrows, with light yellow, red and blue between the head and neck. The barbet has a round, chubby body with a short tail and likes to live in dense vegetation.

Taiwan Barbet (Psilopogon nuchalis)

- 📍 Daan Park
- 📍 Fuyang Eco Park
- 📍 Xiangshan Hiking Trail
- 📍 Jiantanshan Hiking Trails

Taipei Green Treefrog (Zhangixalus taipeianus)

- 📍 Xiangshan Park
- 📍 Pingding Ancient Canal Hiking Trail
- 📍 Zhangshu Trail

The frog's green back is able to turn dark brown as the environment changes, and the belly can go between white and yellow. Unlike most treefrogs which prefer to sing in the summer, Taipei green treefrogs chorus during wintertime.

Taiwan Bamboo-Partridge (Bambusicola sonorivox)

- 📍 Yangmingshan National Park (Xiaoyoukeng, Menghuan Pond, Mt. Qixing)

The Taiwan bamboo-partridge is mainly brown, with gray-blue coloring from the head to the chest and a clear reddish-brown color on its throat. This secretive bird covers itself in the grass with its short wings when it encounters people.

Miridiba Taipei

- 📍 Taipei Botanical Garden

The brown Miridiba Taipei is a scarab with the characteristics of a beetle, and its elytrons are hardened forewings. The biggest difference between Miridiba Taipei and a normal beetle is that the former's back is covered with a thin layer of long hair.

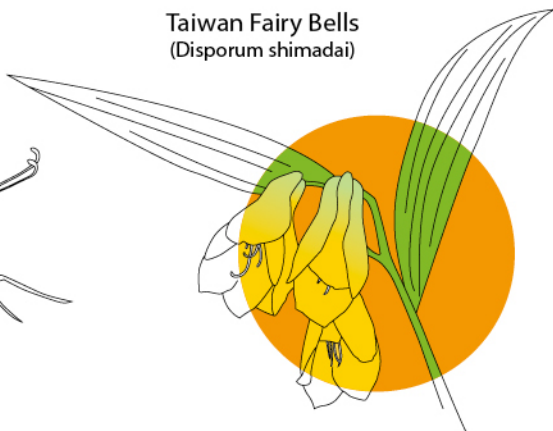


Ecology Coloring Book

Lime Butterfly
(*Papilio demoleus*)



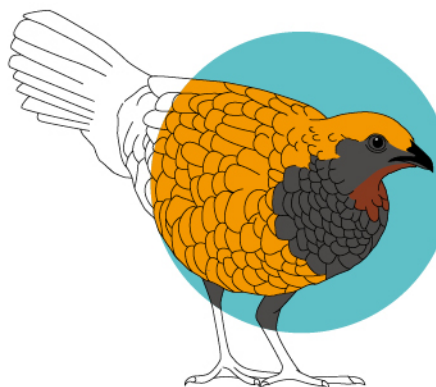
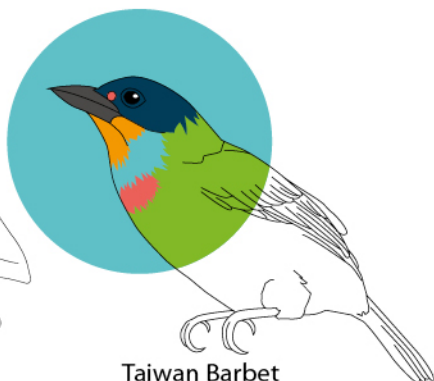
Taiwan Fairy Bells
(*Disporum shimadai*)



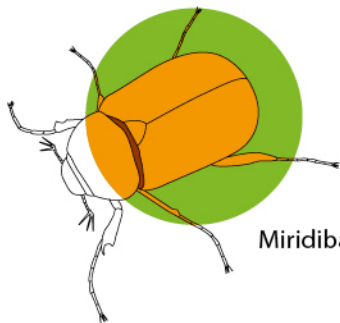
Taipei Green Treefrog
(*Zhangixalus taipeianus*)



Taiwan Barbet
(*Psilopogon nuchalis*)

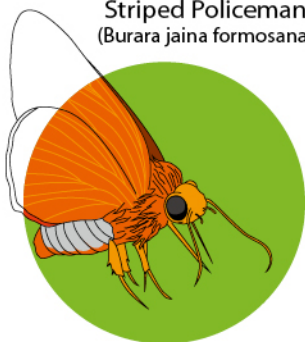


Taiwan Bamboo-Partridge
(*Bambusicola sonorivox*)

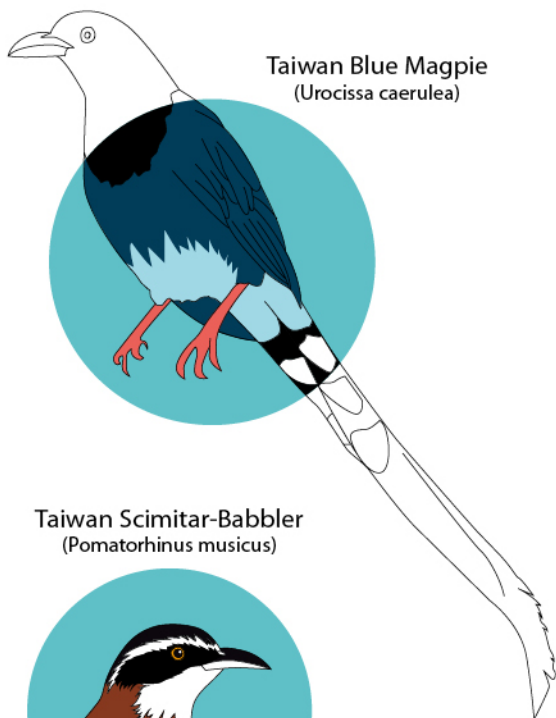


Miridiba Taipei

Striped Policeman
(*Burara jaina formosana*)



Taiwan Blue Magpie
(*Urocissa caerulea*)



Oldham's Azalea
(*Rhododendron oldhamii*)



Taiwan Scimitar-Babbler
(*Pomatorhinus musicus*)



Taiwanese Firefly
(*Abscondita cerata*)



Taiwan Quillwort
(*Isoetes taiwanensis*)



Collecting Wildlife in Taipei



Taiwan Blue Magpie (*Urocissa caerulea*)

- 📍 Taipei Botanical Garden
- 📍 Xiangshan Hiking Trail
- 📍 Jiantanshan Hiking Trails
- 📍 Yangmingshan National Park

Above the chest and neck is black, the beak is bright red, the eyes are yellow and the body is azure blue. The magpie's unique black-and-white tail accounts for almost two-thirds of its whole beautiful length.

Taiwan Scimitar-Babbler (*Pomatorhinus musicus*)

- 📍 Fuyang Eco Park
- 📍 Maokong

The Taiwan scimitar-babbler has a slightly downward curve at the tip of its sharp beak, thick white eyebrows against the black "mask" around the eyes and a reddish brown back. It is typically active in the woods around dawn or dusk.

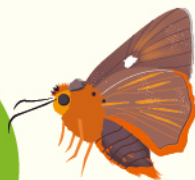
Taiwan Quillwort (*Isoetes taiwanensis*)

- 📍 Yangmingshan National Park (Menghuan Pond)

A member of the Isoetes family, a submergent plant living in shallow ponds. Its long lush leaves stem radially from the bulb like a bunch of scallions. It is a species uniquely endemic to Taiwan and can only be found in Yangmingshan National Park's Menghuan Pond.

Striped Policeman (*Burara jaina formosana*)

- 📍 Qingtiangang Circular Trail



A larger butterfly species, the abdomen is orange-red, the other parts are light gray and there is a circle of bright orange-red fringe under the outer edge of its dark brown wings.

Oldham's Azalea (*Rhododendron oldhamii*)

- 📍 Daan Park
- 📍 Floriculture Experiment Center
- 📍 Zhuzihu
- 📍 Yangming Park



With bright reddish orange petals and hairy stems, Oldham's azalea blooms between March and October, giving it one of the longest flowering seasons for native Taiwanese azaleas.

Taiwanese Firefly (*Abscondita cerata*)

- 📍 Hushan Hiking Trail
- 📍 Fuyang Eco Park
- 📍 Pingding Ancient Canal Hiking Trail

The Taiwanese firefly has a slender body with black wings. Its orange chest can be seen blinking yellowish-green light at night in low altitude mountainous areas between March and May.



Transportation Guide

Travel Information Services

Taipei Citizen Hotline: 1999 (Outside Taipei City, please dial 02-2720-8889)

Taipei Travel Net: travel.taipei/en, presents travel information on Taipei City in Chinese, English, Japanese, Korean, Thai, Indonesian, Vietnamese, and Spanish

TaiwanStay: taiwanstay.net.tw (info on legally registered hotels and guesthouses)

Taiwan Tourism Bureau: 0800-011-765, eng.taiwan.net.tw

Toll-free complaint hotline / Taiwan Tourism Bureau: 0800-211-734

Information for Foreigners in Taiwan: 1990



Taipei Travel Net



Taipei Travel App

Metro Taipei

 02-218-12345 (24-hour Customer Service)  english.metro.taipei

Metro Tickets



Single-Journey
NT\$20 - NT\$65



One-Day Pass
NT\$150



24hr Pass
NT\$180



48hr Pass
NT\$280



72hr Pass
NT\$380

EasyCard & iPASS

Cards can be bought at MRT stations, convenience stores and other designated shops. After topping up, you can use them to take public transport and rent a YouBike (registration required). You can use it as an e-wallet at convenience stores and certain shops for small payments.






Taipei Fun Pass

The Taipei Fun Pass series offers various combinations of admissions to attractions and transportation fares, including the Unlimited version, the Exploring version for tourist attractions, and the Transportation version for unlimited public transport rides. Within the cards' validity, tourists can travel conveniently in Taipei City, New Taipei City and Keelung City. You can buy passes and other travel products through the Taipei Fun Pass official website.





YouBike Public Bicycles

 1999 (Outside Taipei City, please dial 02-2720-8889) ext. 5855  02-218-12345 (24-hour Customer Service)
or 02-8978-5511(1.0), 02-8978-8822(2.0)

 taipei.youbike.com.tw

Maokong Gondola

 02-218-12345 (24-hour Customer Service)
 english.gondola.taipei

Blue Highway

 english.dot.gov.taipei

Taipei River Cruise Mini Trip  river-fun.taipei
(Please contact the boat companies about cruises.)

Taiwan Tourist Shuttle — Beitou Zhuzihu Route

 MRT Beitou Station — Zhuzihu

 www.taiwantrip.com.tw

Taipei Sightseeing Bus

The buses operate on two lines, Red and Blue. Buses on the Red Line stop at Ximending, Bangka Longshan Temple, Chiang Kai-Shek Memorial Hall, Yongkang Commercial Area, Taipei 101, and the East District. Buses on the Blue Line stop at Beimen (North Gate), Taipei Fine Arts Museum, Chiang Kai-Shek Shilin Residence and National Palace Museum. For more information, please visit the official website or call 02-8791-6557 ext. 30.



Taipei City Recommended Taxi Services

Taipei taxis will pick you up with a simple wave of the hand; they are a good choice when traveling to places with less public transportation access. The Taipei City Government rates each taxi company in the city by its service and gives annual awards to those with the best service. For more information, please visit the official website or call 02-2727-4168 ext. 8529.



※ To the best of our knowledge, the information contained herein is correct as of date of publication;
in case of changes, the information announced by individual businesses takes precedence.

※ For permission to print this publication, please scan the QR code.



Taipei MRT Map

